

CLUFFFALO: ART OMI



CHARLES CLOUGH

CLUFFFALO:ART OMI

PUBLIC PAINTING PROJECT: SEPTEMBER 2017

CHARLES CLOUGH

© Charles Clough 2018

CONTENTS	Foreword Ruth Adams	7
	Introduction	8
	THE STUDIES	11
	THE PARTICIPANTS	23
	THE PAINTING	39
	STILLS	63
	MONOPRINTS	81
	THE EXHIBITION	141
	About the Artist	156

FOREWORD

It's been such a pleasure having the Cluffalo: Art Omi exhibit in the Newmark Gallery at The Fields. The workshop was a resounding success, and an affirming experience. I'm moved each time a visitor comes in and happily announces that they helped make the Cluffalo: Art Omi painting! Although we wish Cluffalo: Art Omi could stay forever, we feel grateful for the time we've had to live closely with the work.

Thank you for your illuminating talk, it was interesting to learn more about your practice and your history with Hallwalls in particular. I very much enjoy the way you seem to create a handhold for the intangible glue that binds us—that thing that we feel when we share something extraordinary with others.

Your show and workshop have been a highlight of our year here at Art Omi, and it's been wonderful to share the experience with our community. I'm grateful we're able to keep the show up through January. We'll appreciate the warmth it brings when the days get to their shortest!

—Ruth Adams, Executive Director, Art Omi,
December 31, 2017

INTRODUCTION

Art Omi curator, Bill Maynes, invited me to present an exhibition and painting workshop in the Benenson Visitors Center and Gallery at Art Omi from September 2017 through February 2018. The painting workshop, the resulting painting, *Clufffalo: Art Omi*, 2017, and exhibition of eight other paintings produced through public participation are the subject of this book.

I established my art studio in East Aurora, New York in 1971. I moved it to Buffalo, New York, various locations in New York City (1978), Westerly, Rhode Island (1999) back to Buffalo (2013) and then to East Aurora (2015) while maintaining my residence in New York City.

In Buffalo in 1974 I co-founded Hallwalls Contemporary Art Center with Robert Longo, Cindy Sherman, Michael Zwack, Nancy Dwyer, Diane Bertolo and others. This collaborative effort presented exhibitions, performances, visiting artists from across the spectrum of the arts much like Art Omi and continues today, having presented over 6,000 events. The context of Hallwalls provided the setting for my earliest participatory projects.

Clufff.com became my website's url in 1996 and while preparing for my 2012 University at Buffalo Art Gallery exhibition, it occurred to me that I was on "The Way to Clufffalo", which became the exhibition's title. I began to think of my archive, collection and library as the Clufffalo Institute. In July, 2015 I moved my studio to the Print Shop at the Roycroft in East Aurora. The Roycroft was founded in 1895 by Elbert Hubbard to promote the American Arts and Crafts Movement and social progressivism. The campus printed Roycroft publications, manufactured Mission-styled furniture and has an inn visited by the likes of Henry Ford and Thomas Edison.

Since moving my studio to Buffalo in 2013 I have titled my paintings *Clufffalo*. The three types of *Clufffaloes* are *Places*, *Seasons* and *Numbers*. *Places*, such as *Clufffalo: Art Omi*, are made in conjunction with a museum or presenting not-for-profit, with public participation for a day-long event and finished by me. *Seasons* are made exclusively at the Roycroft in East Aurora, New York, by all who wish to participate over the course of each season to produce one painting. At the end of the season I grind and polish the painting to finish it. I provide 8 x 10 inch boards for participants to mono-print into the painted surface of a *Season* or *Place* painting for a take-away. I photograph portraits of the

participants and their state of the painting which I include in an art history book (like this) about the process and resulting painting. The making of a *Place* painting is videoed from above to show each participant's contribution. *Clufffalo: Numbers* are painted by me, alone.

The "Studies" section begins with my painting, *Fearwell*, and is followed by sixteen studies which plot the application of colors for the final state of *Clufffalo: Art Omi*.

The "Participants" section includes portraits of those who painted on *Clufffalo: Art Omi* from 10am until 5pm on September 2, 2017. Art Omi publicized the event and pre-registered the participants from around the world.

The "Painting" section documents the development of the painting. Within the Painting sections you will notice some "paired" (seemingly duplicate) images. These allow the viewer a three-dimensional view of the surface. This is accomplished by crossing one's eyes to superimpose the two images. This is known as "free-viewing." (See <http://www.stereoscopy.com/faq/freeviewing.html>).

The "Stills" section presents frames pulled from the video shot from overhead by Bill Maynes. Given the circumstances of the Benenson Visitors' Center the video was shot at an angle and thus the resulting trapezoidal frames were adjusted in PhotoShop accounting for the quality of the images, such as they are.

The "Monoprints" section presents images of the mono-print take-away paintings made by the participants.

The "Exhibition" section includes *Arena*, a pivotal public participation project made at Artpark, Lewiston, New York in 1992; the seven *Clufffalo: Seasons* paintings made from Autumn 2015 through Spring 2017; and the completed *Clufffalo: Art Omi*.

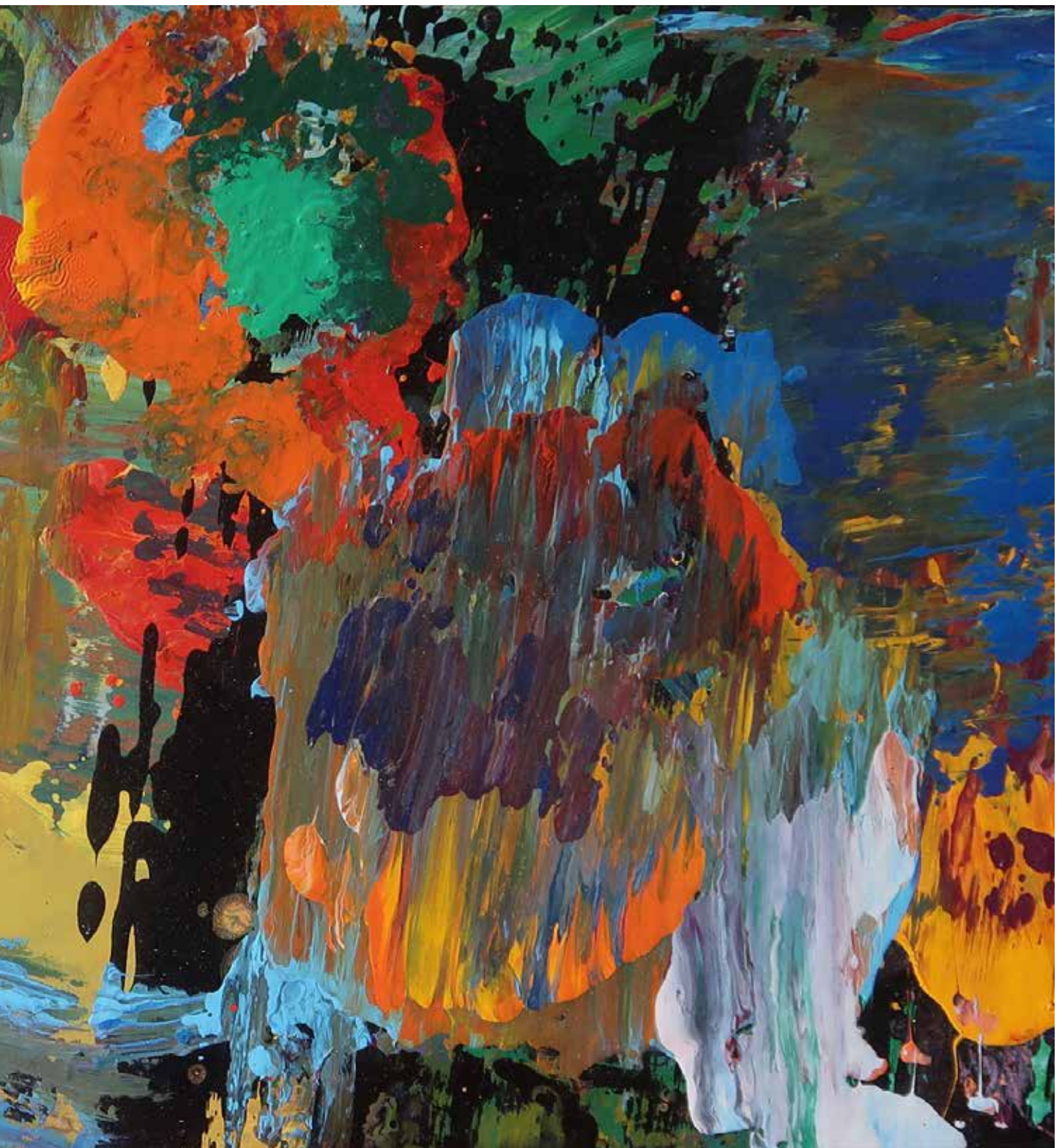
I am grateful to Art Omi founder, Francis J. Greenburger, the Board of Trustees, Director, Ruth Adams, Senior Curator, Bill Maynes, Curator, Nicole Hayes, Education Program Director, Sasha Sicurella and all the other facilitators and participants who helped to make *Clufffalo: Art Omi* possible.

—Charles Clough, December 26, 2017

STUDIES



I wanted to base the final appearance of *Cluffalo: Art Omi* on one of my preceding works: *Fearwell*, 1999, enamel on masonite, 13 x 27 inches. I used the following sixteen images as guide for applying the final colors after the participants completed their applications.



















PARTICIPANTS



Uche Nduka



Carol Fredericks



Amelia Geurin



Mia Polk



Andy Polk



Elias Elmore



Catherine Mctague



Ashley Eady



Ben Sidel



Ellen Moskowitz



Beth Levison



Bibi Prival



Arlo Bishop Hayes



Carmela Jerry



Stephen Condon



Cassie Massa



Vincent Tocco



Cindy Derrow



Claudia Matthews



Ernest Sessions



Conrad Wells



Cyrus Dancy



Fiona Geurin



David Goldstein



Desirae Almeida



Douglas Sussman



Eames Ewald



E. G. Jerry



Beth Lenahan



Elisabeth Pritchett



Elizabeth Farr



Gideon Farr



Ella Herwick



Anne Michele Eisen



Ellen Moss



Emi Berwick Poutre



Emmett Bishop Hayes



Carly Gaebe



Everest Ewald



Fiona Gardner



Coco Hamilton



Frank Schroeder



Gabe Sidel



Carol Fredericks



Gracelyn Pritchett



Henry Sidel



Lou Schroeder



Howie Cohen



Hugh Dancy



Jason Huff



Javier Marimon



Selim Cayligil



Joanne Hwang



Teresa Barendsfeld



Jonathan Polk



Lisa Stern



Joshua Furst



Julia Kersten



Kai Schroeder



Kailash Langer



Karen Martin



Karla Chrzanowski



Kathy Condon



Kim Mckee



Kim Ngan Tran



Kit Fraser



Kurt Barendfeld



Kurt Langer



Lauren Marimon



Laz Marimon



Lena Wells



Lincoln Farr



Linda Lange



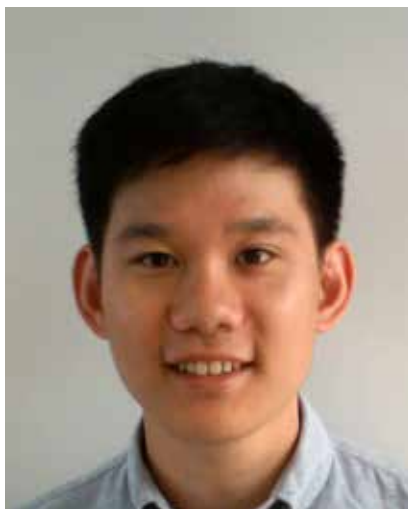
Josh Cohen



Lola Marimon



Jeffrey Eisenberg



Tracy Li



Luca Jerry



Malini Menon



Margaret Pritchett



Maria Karamanou



Matt Butlein



Meg Jerry



Vicki Forbes



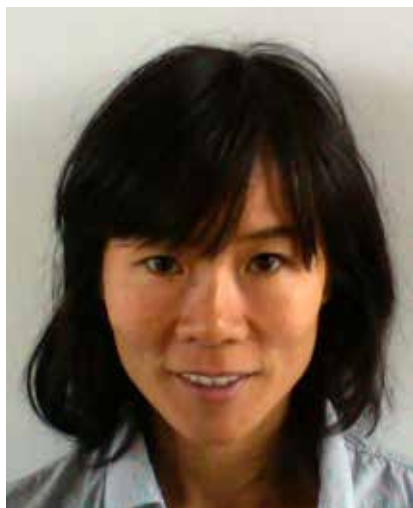
Mia Bryant



Holly Flynn



Michael Pritchett



Mio Murakami



Molly Quidort



Mollye Goldstein



Monica Jerry



Natalia Solovieva



Elizabeth Grefrath



Patrick Mckee



Phyllis Devoe



Pnina Ramon



Quinn Fusting



Rachel Doriss



Reuben Gordon



Rohan Menon



Rolando Eisen



Alivia Donnellan



Roy Kaufman



Sam Stern



Samuel Quidort



Sasha Sicurella



Joe Herwick



Sherri Greenbach



Simon Wells



Dak Kruglak



Andrei Flynn



Steve Elmore



Sula Nduka



Tabitha Stack



Tara Elmore



Simone Elmore



Thea Farr



Abigail Donnellan



Meredith Le Vee-Clough



Louis Clough



Vincent Clough



Eddie Clough



Veronica Clough



Wendy Eisenberg



Zohas Tirosh-Polk

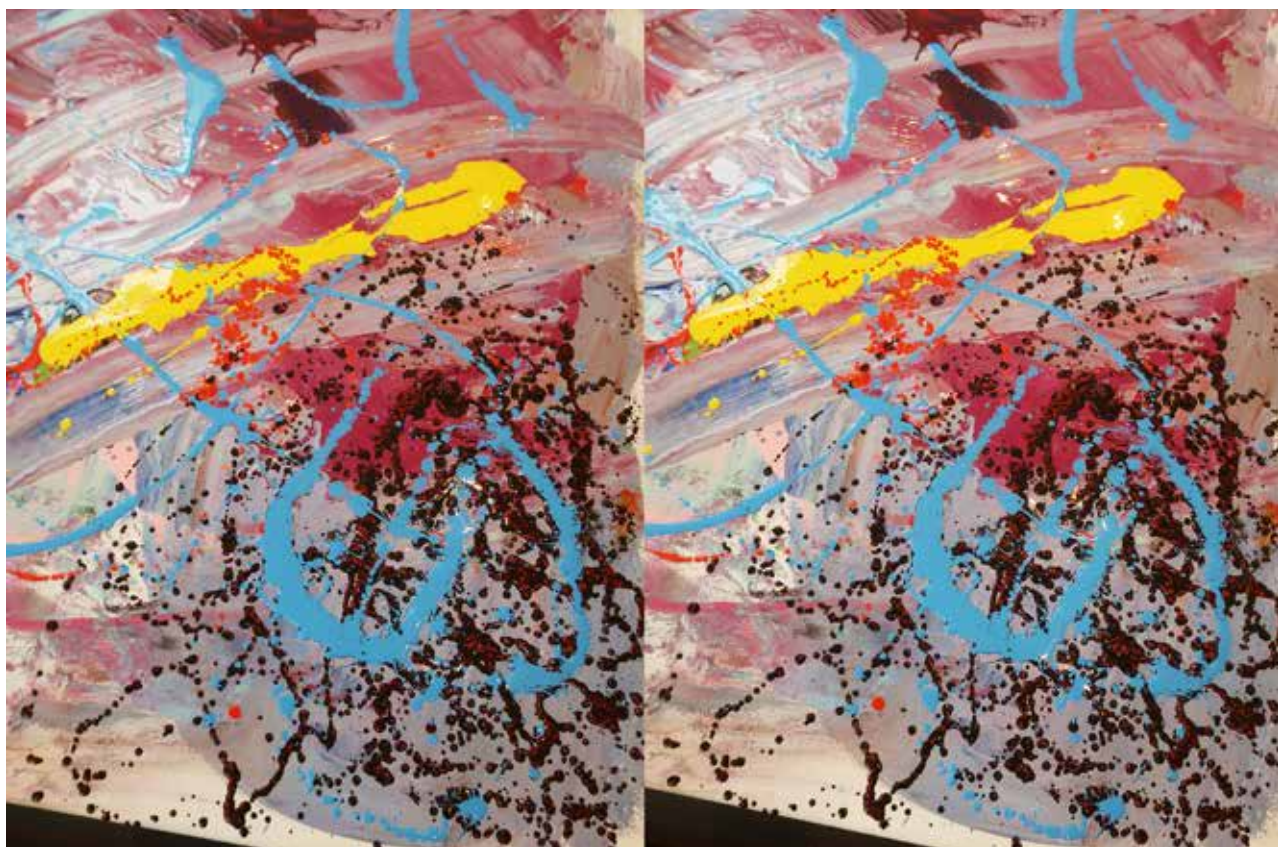
PAINTING





























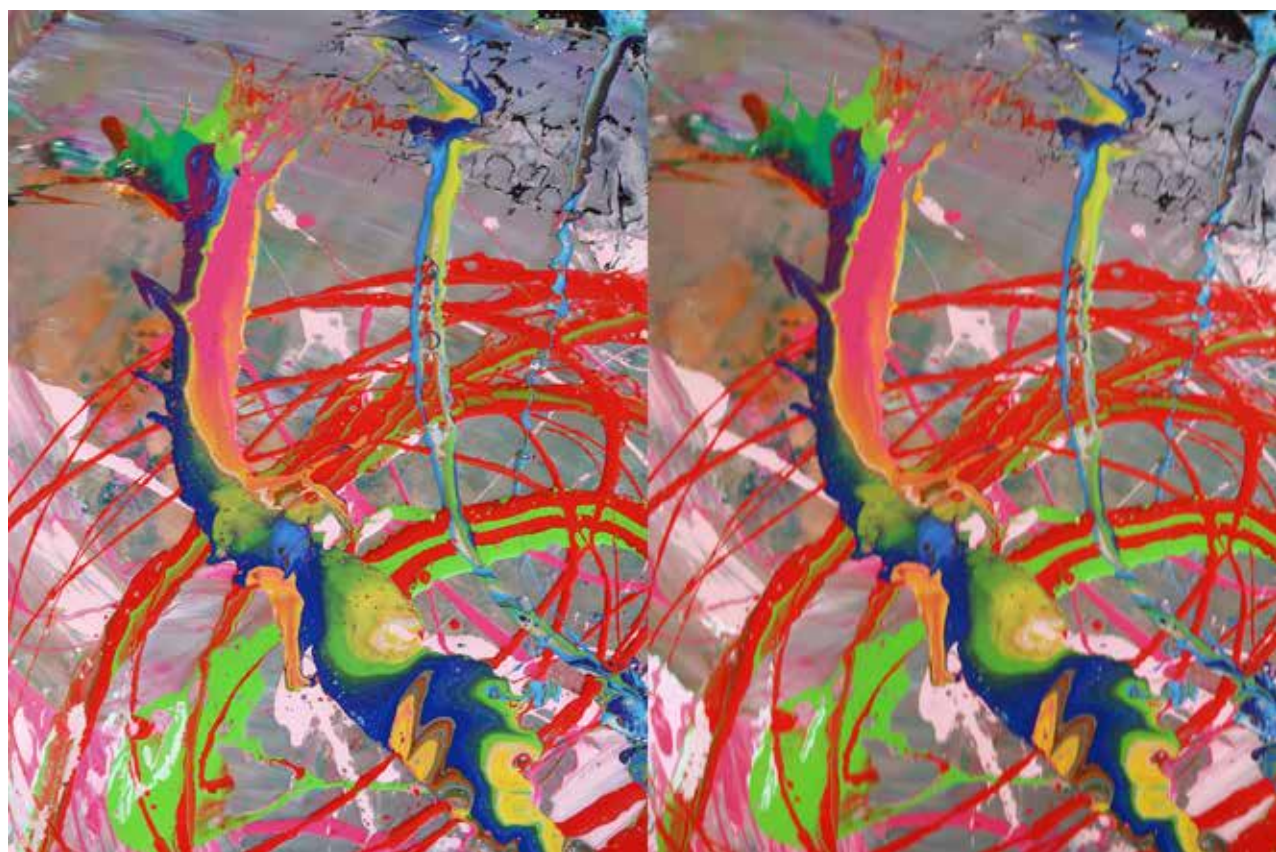
















STILLS

































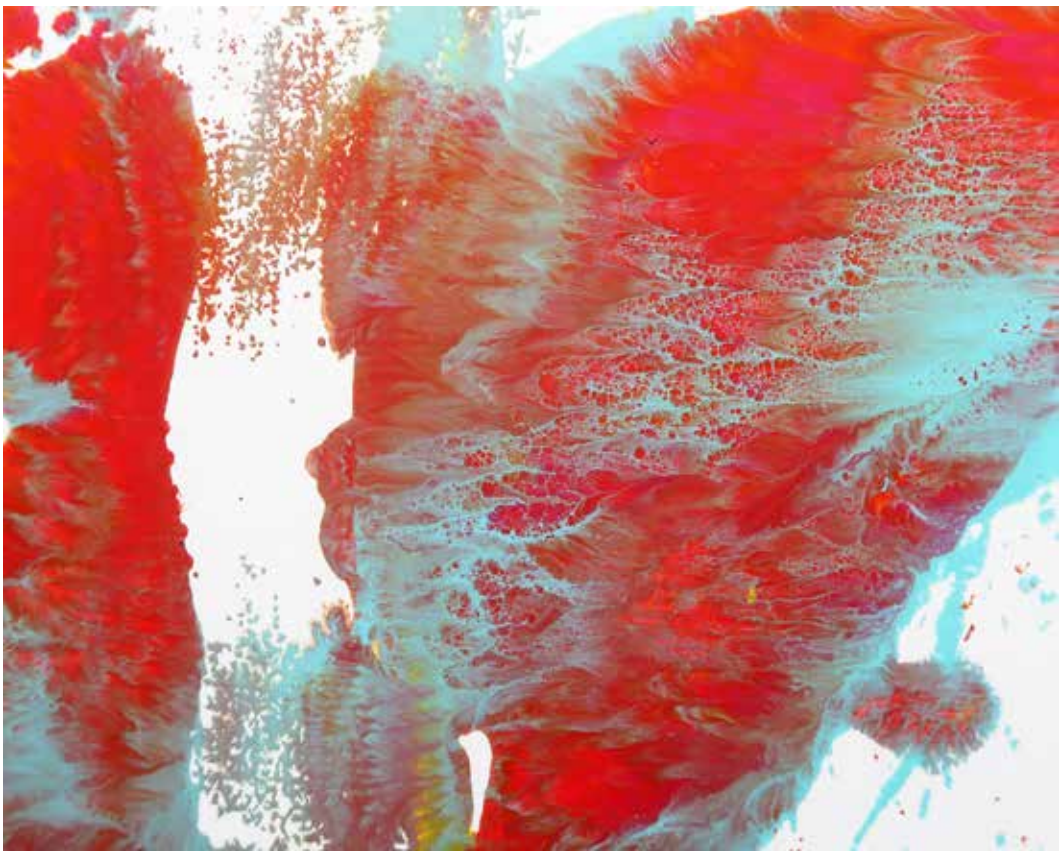
MONOPRINTS



Ushe Nduka



Arlo Bishop-Hayes



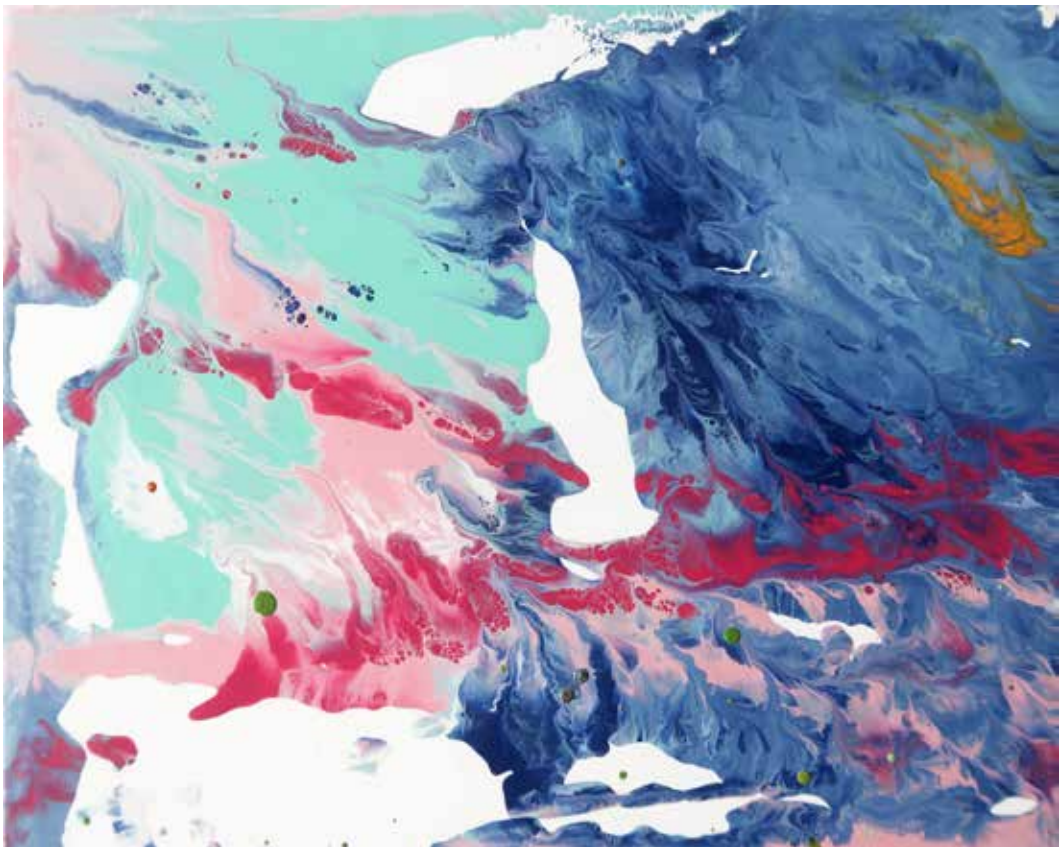
Anonymous



Stephen Condon



Joanne Huang



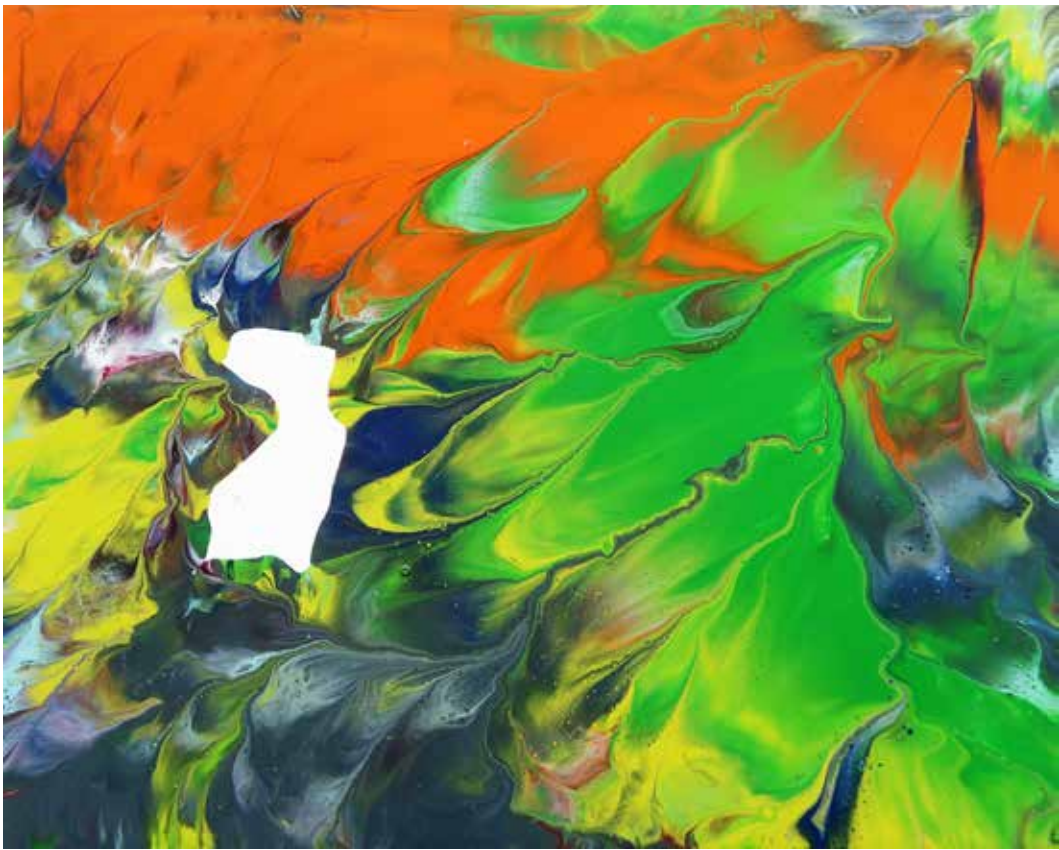
Kathy Condon



Ernie Sessions



Gracelyn Pritchett



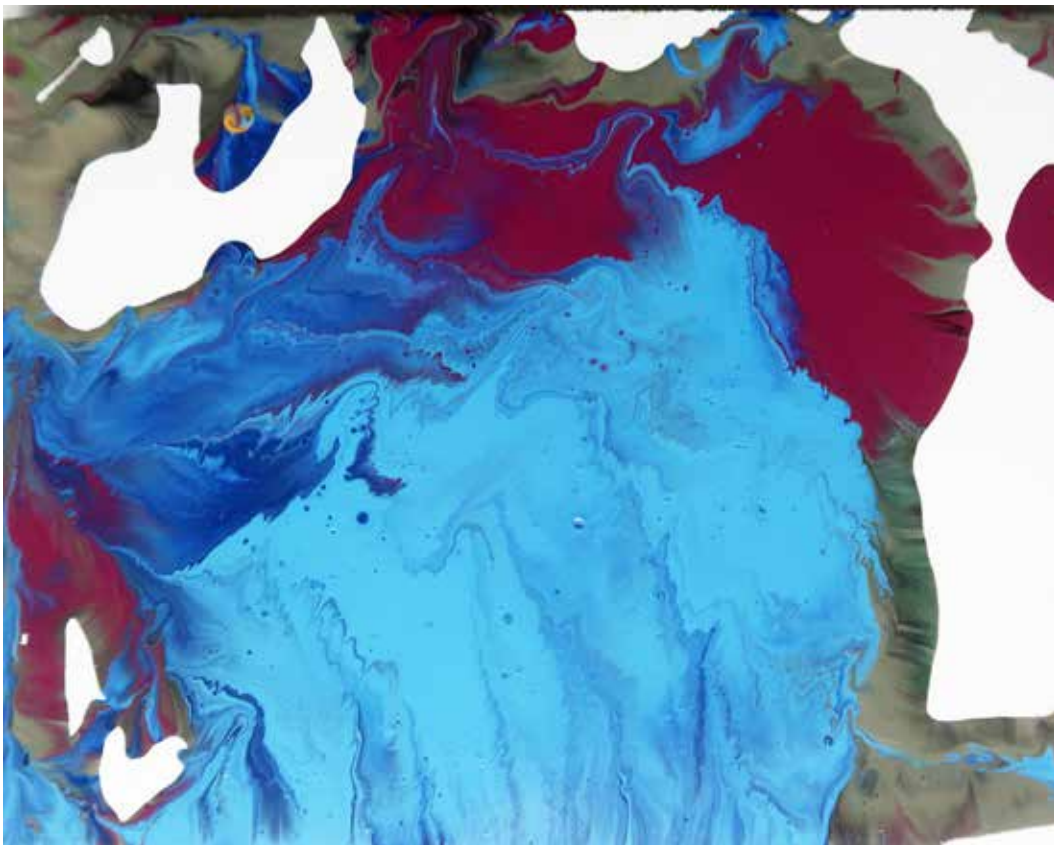
Liz Trovato



Sula Nduka



Laz Marimon



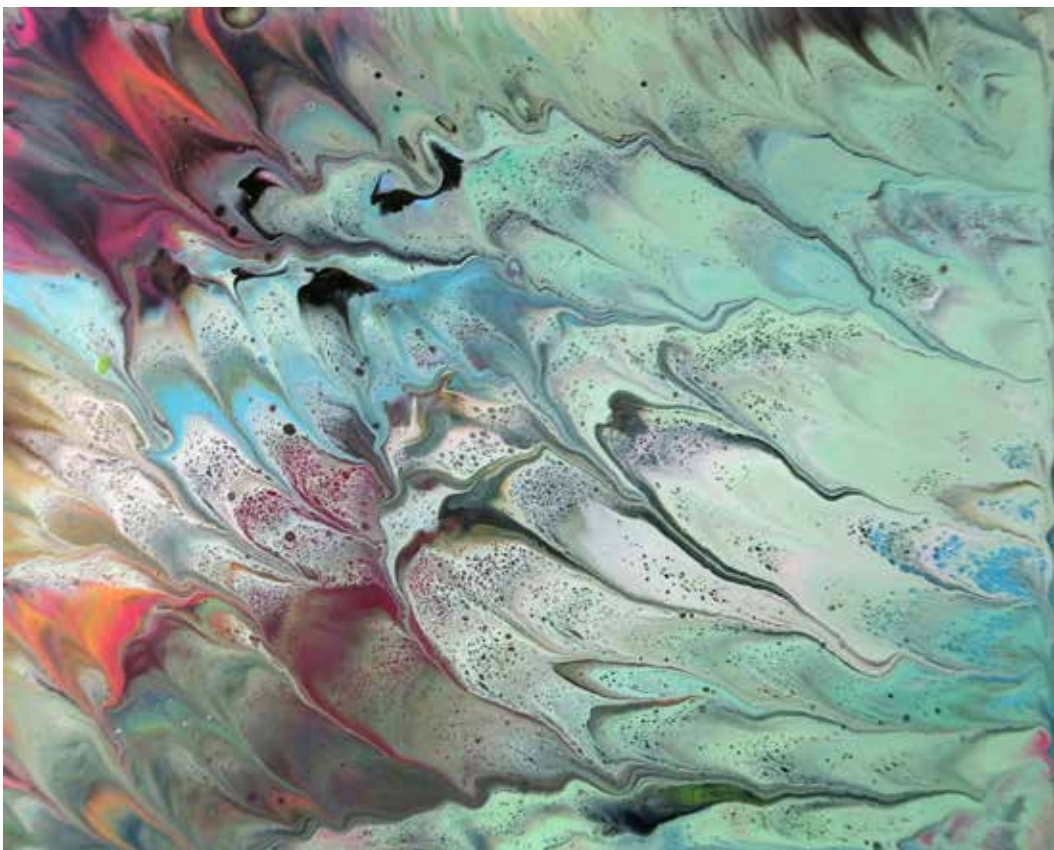
Lou Schroeder-Huang



Eddie Clough



Michael Pritchett



Karen Martin



Julia Kirsten



Kit Fraser



Coco Hamilton



Fiona Gardner



Elizabeth Farr



Claire Danes



Kai Schroeder-Huang



Ella Herwick



Joshua Furst



Emi Herwick Poutre



Joe Herwick



Cyrus Dancy



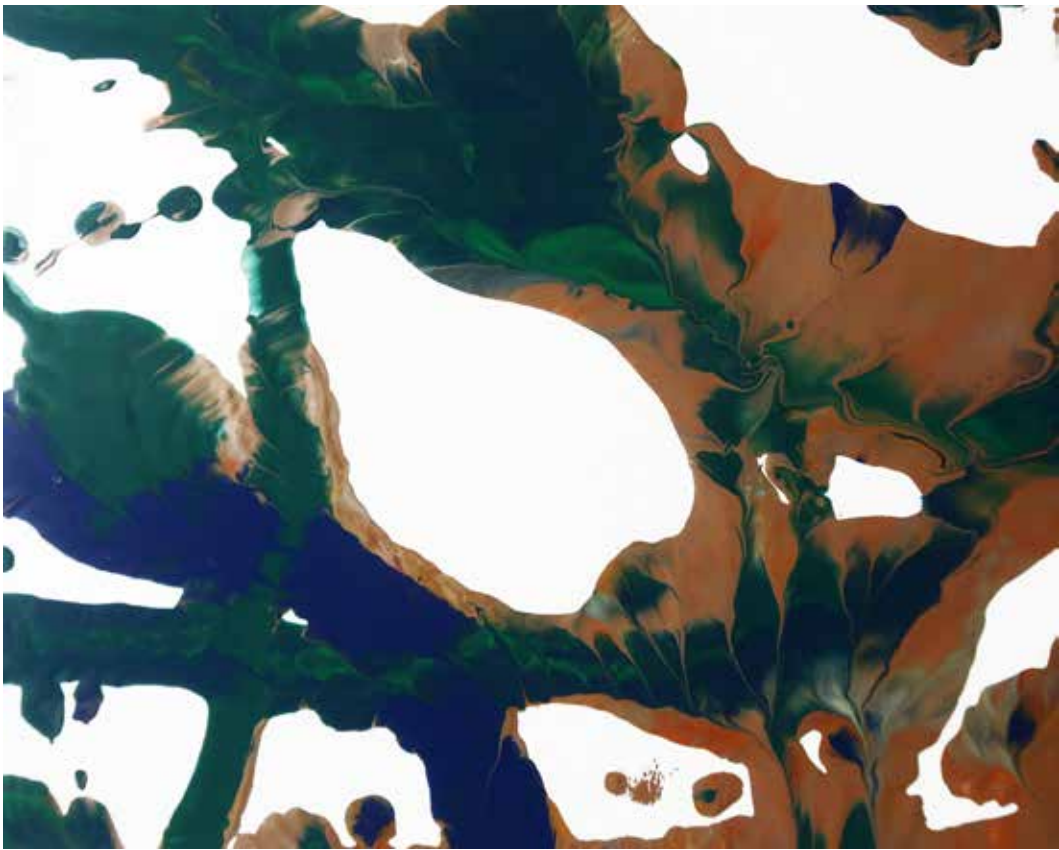
Louis Clough



Vicki Forbes



Simone Elmore



Howie Cohen



Elias Elmore



Matthew Butlein



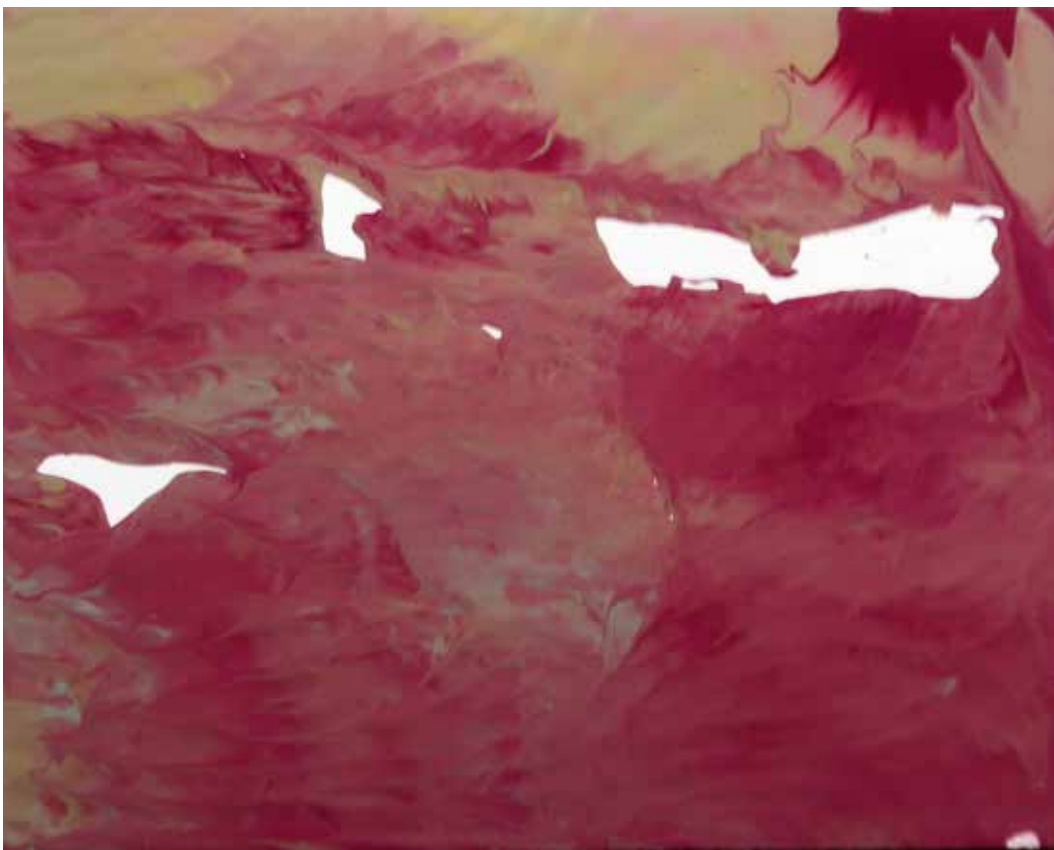
Margaret Pritchett



Rolando Eisen



Elizabeth Grefrath



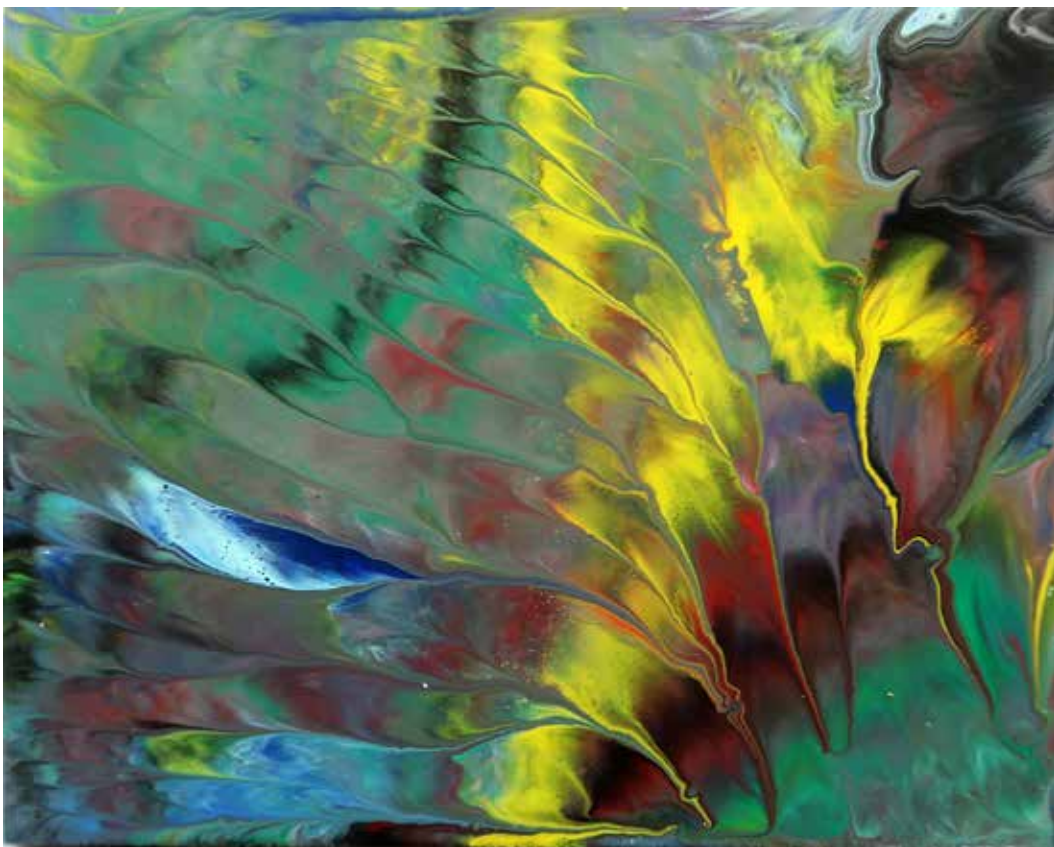
Veronica Clough



Meredith LeVee-Clough



Tara Elmore



Frank Schroeder



Vincent Clough



Malini Menon



Anne Michele Eisen



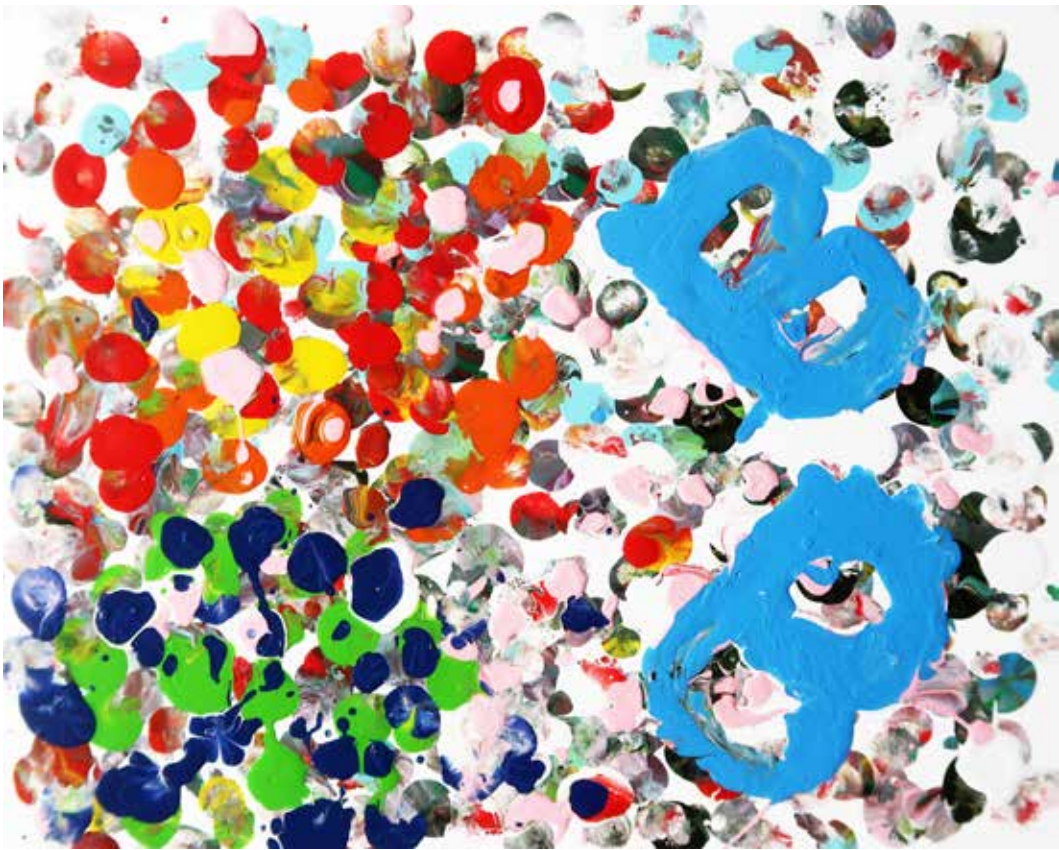
Josh Cohen



Nick Clough



Kim Ngan Tran



Pnina Ramon



Quinn Fusting



Thea Farr



Sam Quidort



Tracy Li



Gideon Farr



Lauren Marimon



Coco Hamilton



Elizabeth Pritchett



Mia Bryant



Fiona Guerin



Zoe Torosh-Polk



Meg Jerry



Elias Elmore



Rohan Mehon



Dak Kruglak



Bill Devoe



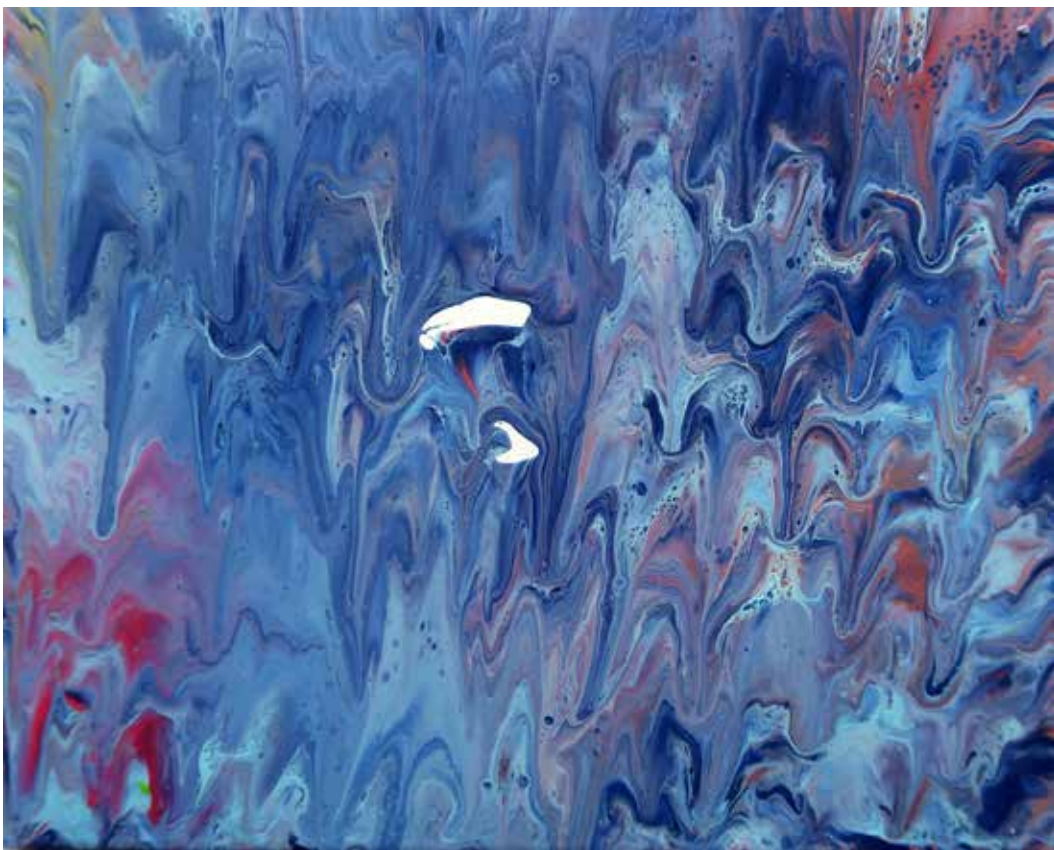
Jeff Eisenberg



Lola Marimon



Molly Quidort



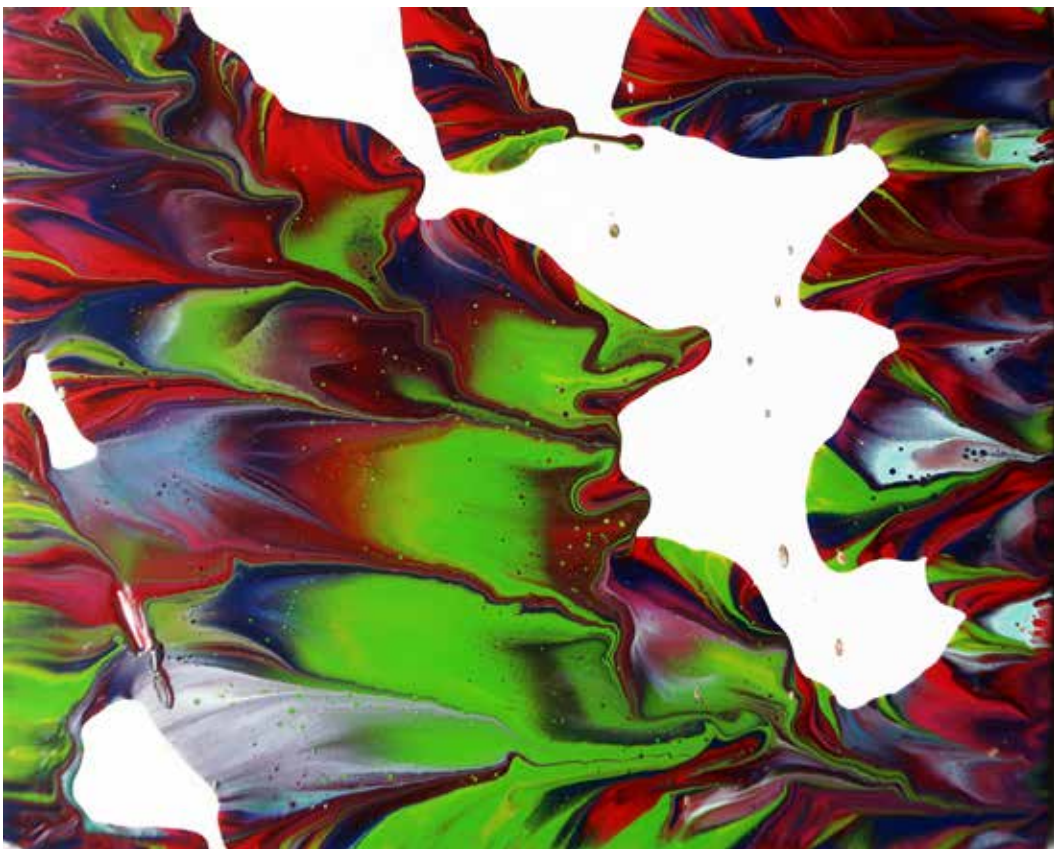
Javier Marimon



Wendy Eisenberg



Ellen Moss



Natalia Solovieva



Luca Jerry



Anonymous



Steve Elmore



Conrad Wells



Hugh Dancy



Claudia Matthews



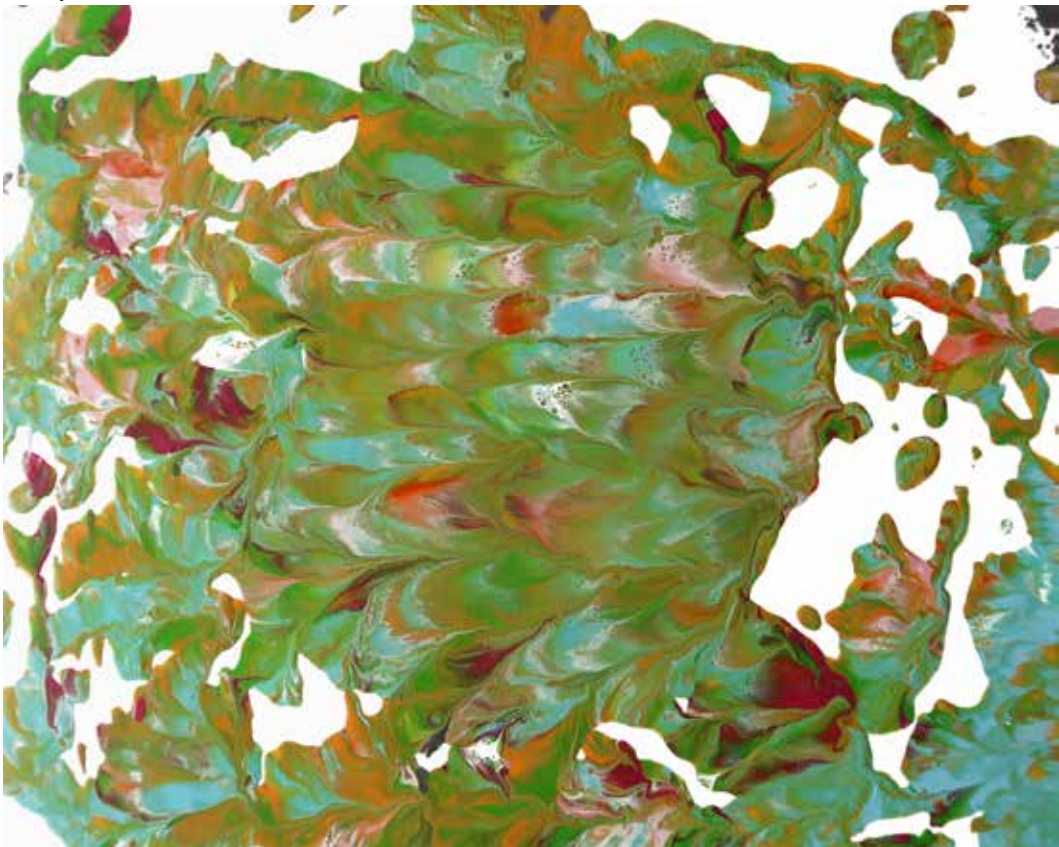
Monica Jerry



Everest Ewald



Cindy Darrow



Carmela Jerry



Lily Drye



Simon Wells



Lena Wells



Theo Drye



Leslee Chinelli



Christine Harris



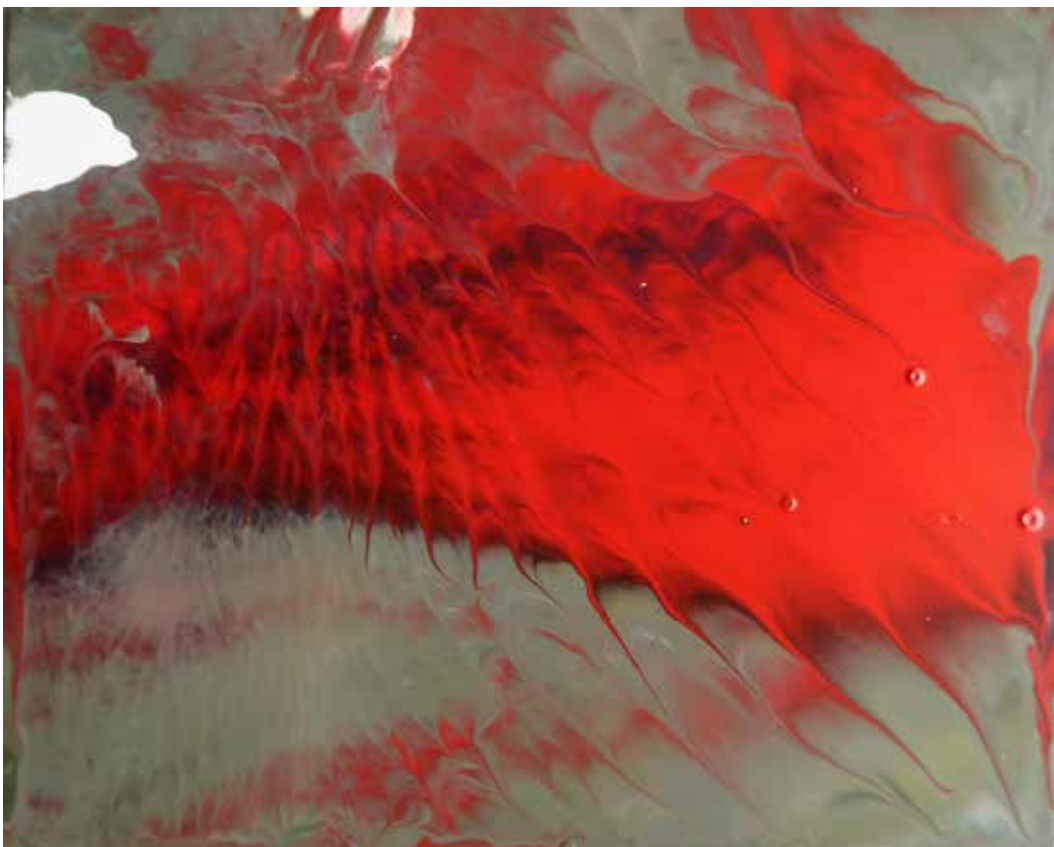
Nina Harris



Vincent Tocco



Mollye Goldstein



Emmett Bishop



Teresa Barenfeld



Abigail Donnellan



Phyllis DeVoe



Mia Polk



Linda Lange



Ashley Eady



Holly Flynn



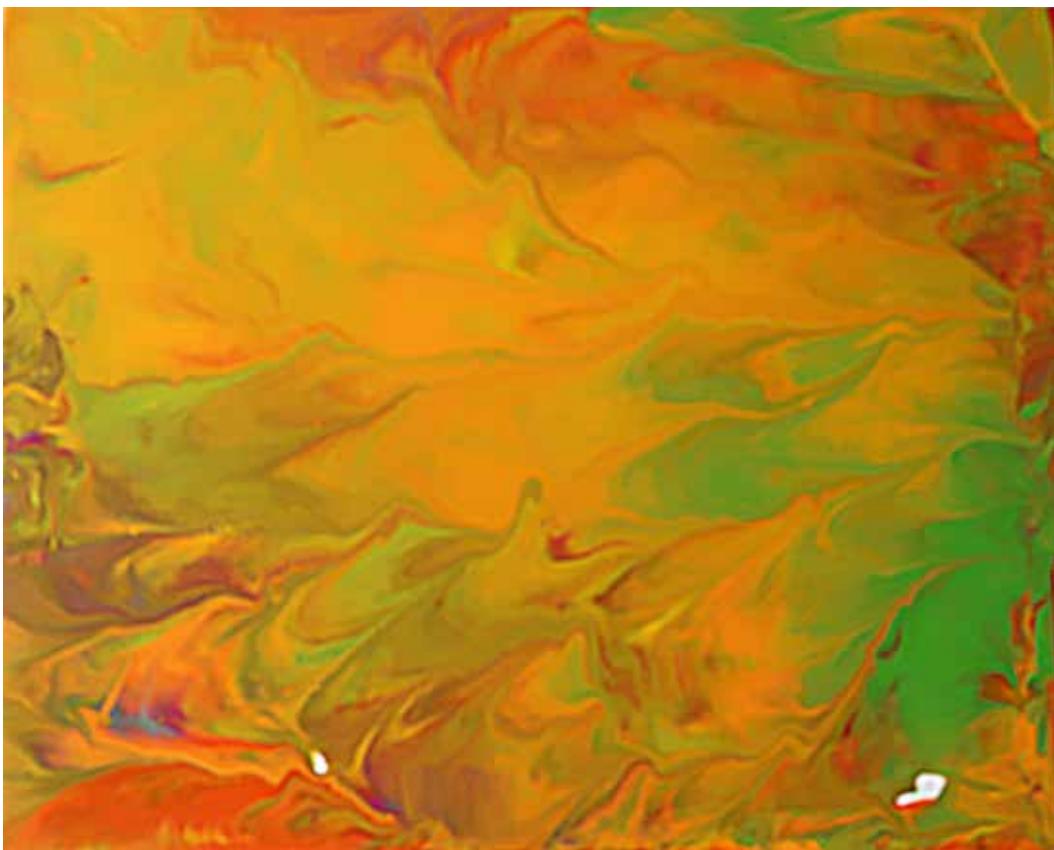
Ellen Moscovitz



Rachel Doriss



Vincent Tocco



Andrei Flynn



Kurt Barendsfeld



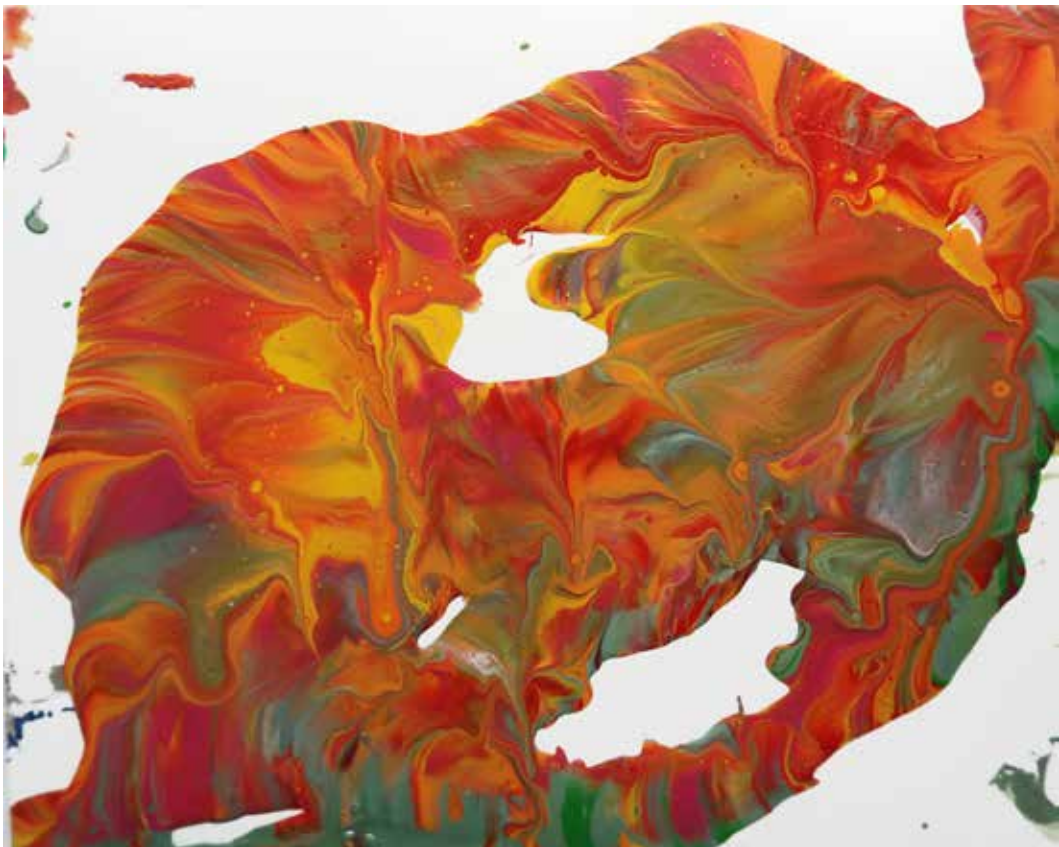
Joy Smith



Gideon Farr



Bibi Prival



Coco Hamilton



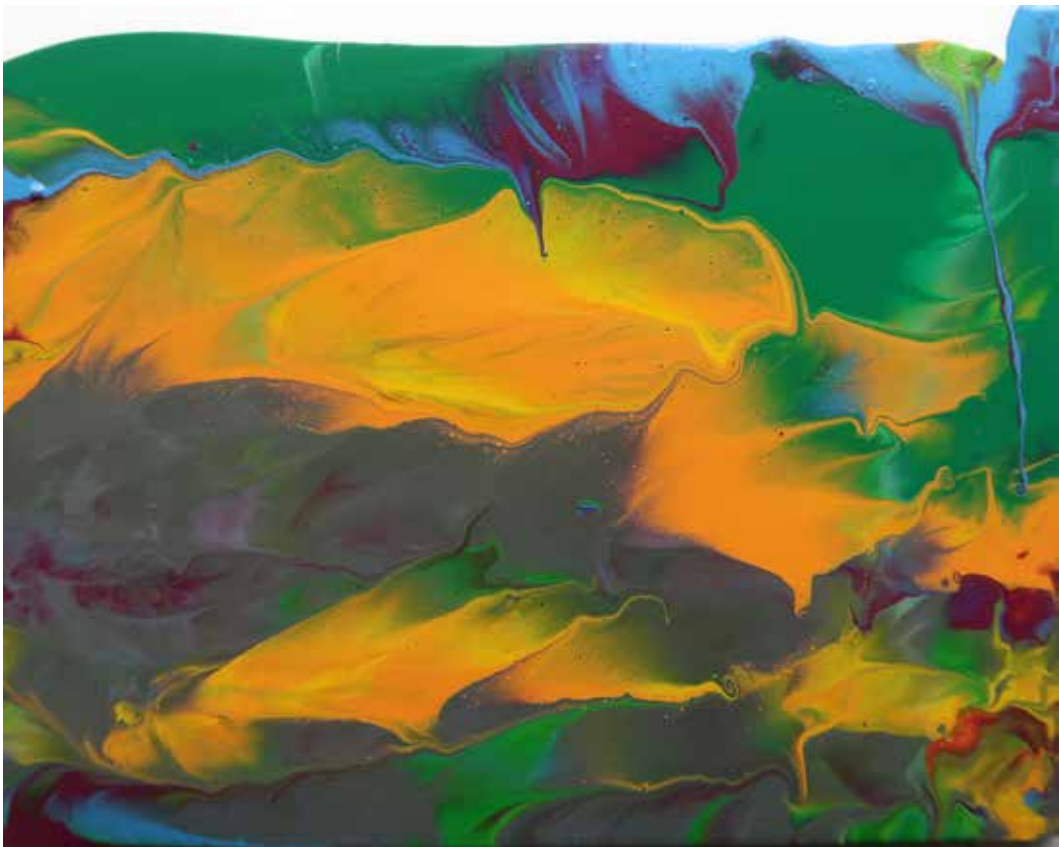
Amelia Guerin



Desirae Almeida



Sasha Sicurella



David Goldstein



Roy Kaufman



Sherri Greenbach



Alivia Donnellan



Anonymous



Anonymous



Jonathan Polk

THE EXHIBITION



Arena, 1992, latex on canvas, 108 x 204 inches





Arena Painting at Artpark, Lewiston, New York, was sponsored by C. Taylor Kew of the F. N. Burt Company, Jerry Castiglia of Pratt & Lambert Paint Company, Loius Ciminelli of the Frank Ciminelli Construction Company and Armand Castellani of Tops Market took place during the first two weeks of August, 1992.





Cluffalo: Autumn 2015, 2015, latex on expanded pvc, 32 x 44 inches



Cluffalo: Winter 2016, 2016, latex on expanded pvc, 32 x 44 inches



Cluffalo: Spring 2016, 2016, latex on expanded pvc, 32 x 44 inches



Cluffalo: Summer 2016, 2016, latex on expanded pvc, 32 x 44 inches



Cluffalo: Autumn 2016, 2016, latex on expanded pvc, 32 x 44 inches



Cluffalo: Winter 2017, 2017, latex on expanded pvc, 32 x 44 inches



Cluffalo: Spring 2017, 2017, latex on expanded pvc, 32 x 44 inches, private collection: California



Cluffalo: Art Omi, 2017, latex on canvas, 108 x 192 inches



Charles Clough was born in Buffalo, New York in 1951. He attended Pratt Institute in Brooklyn, Ontario College of Art in Toronto, University at Buffalo and New York University and has taught at Columbia University and the Rhode Island School of Design. He established his art studio in 1971 and has presented his work in more than 70 solo, and 150 group, exhibitions. He has received grants and fellowships from the John Simon Guggenheim Memorial Foundation, the New York State Council on the Arts, National Endowment for the Arts, Adolph and Esther Gottlieb Foundation and the Pollock-Krasner Foundation. More than 600 of his works are included in the permanent collections of more than 70 museums, including the Metropolitan Museum of Art, National Gallery of Art and Smithsonian Museum of American Art. Clough founded Hallwalls Contemporary Art Center in Buffalo, New York with Robert Longo, Cindy Sherman and others in 1974.

David Moog (b. 1944), *Charles Clough*, 2015; Archival inkjet print, 20 x 15 inches; Collection of the Burchfield-Penney Art Center, Gift of the artist, copyright David Moog, 2015, *Artists Seen: Photographs of Artists In the 21st Century A Project by David Moog*.

