



CHARLES CLOUGH
CLUFFFALO: AUTUMN 2016

I established the Cluffalo Institute in 2012 to manage my archive
and collection and to promote and administer the Cluffalo Painting
Workshop at the Roycroft in East Aurora, New York.

Cluffalo: Autumn 2016 has been supported by the
John Simon Guggenheim Memorial Foundation.

Here are the painters and the states of the painting made in my studio in
The Print Shop at The Roycroft in the Autumn of 2016.

ISBN:

© Charles Clough 2017

www.cluff.com

Cover: *Cluffalo: Autumn 2016*, 2016, latex on expanded pvc, 32 x 44 inches

There are three kinds of *Clufffalo*s: *Seasons*, made by all who wish to participate, only at the Roycroft in East Aurora, New York; *Places*, such as *Clufffalo: Hamburg*, commissioned by the Albright-Knox Art Gallery, painted by 150 participants and hanging in the Hamburg, New York Public Library; and *Numbers*, painted by me alone.

The Clufffalo Painting Workshop at the Roycroft began on September 21st, 2015. Since then, and including the subject of this book, five *Seasons* paintings have been completed by 228 participants in 91 sessions.

I provide the space of the workshop, tools and materials, my time and encouragement and freedom, such as it is limited by gravity, viscosity and drying time, for the participants to engage the experience. Through the course of each season the layers of paint accrue and the participants paint their take-aways and “be” within a transformative creative moment. At the end of the season I grind and polish the painting, with grits from 40 to 12,000 to finish the painting in a manner that fulfills my aesthetic.

The Workshop is a ratcheting up of my “structure of intentionality” (the phrase occurred to me many years ago but only now, having just searched, I found a reference to John R. Searle, 1983, “Intentionality”), that I describe as “the photographic epic of a painter as a film or a ghost”. This is intuitively anchored in “the true, the good and the beautiful”.

Most of my aspirations have come true—in terms of being an artist and participating in extending the family. After more than forty-five years in the field I’ve seen increasing interest in contemporary art accompanied by a grandiosity that runs counter to my taste. Thus the scale and parameters of production of the *Seasons* are modest and set in the upstate New York town in which I came to understand myself as an artist.

Time is marked by the hands of the participants. The documentation of the Workshop process is made into books, like this one, as a contribution to art history.

The project includes whoever wants to participate, so please make an appointment to paint and share the news of this cultural experiment. Although only one session can happen per day, the project is always “on”.

This book follows a format of the participant, their state of Clufffalo: Autumn 2016 and then their take-away paintings. A separate publication presents stereo photos of details of the process and studio.

—Charles Clough, 1/12/2017



Meghan Young



Cluffalo: Autumn 2016 First State, 2016, latex on expanded pvc, 32 x 44 inches



Mono-print 2016_09_22_01, 2016, latex on expanded pvc, 8 x 10 inches



Leighanne Lippert



Kristin Lowe



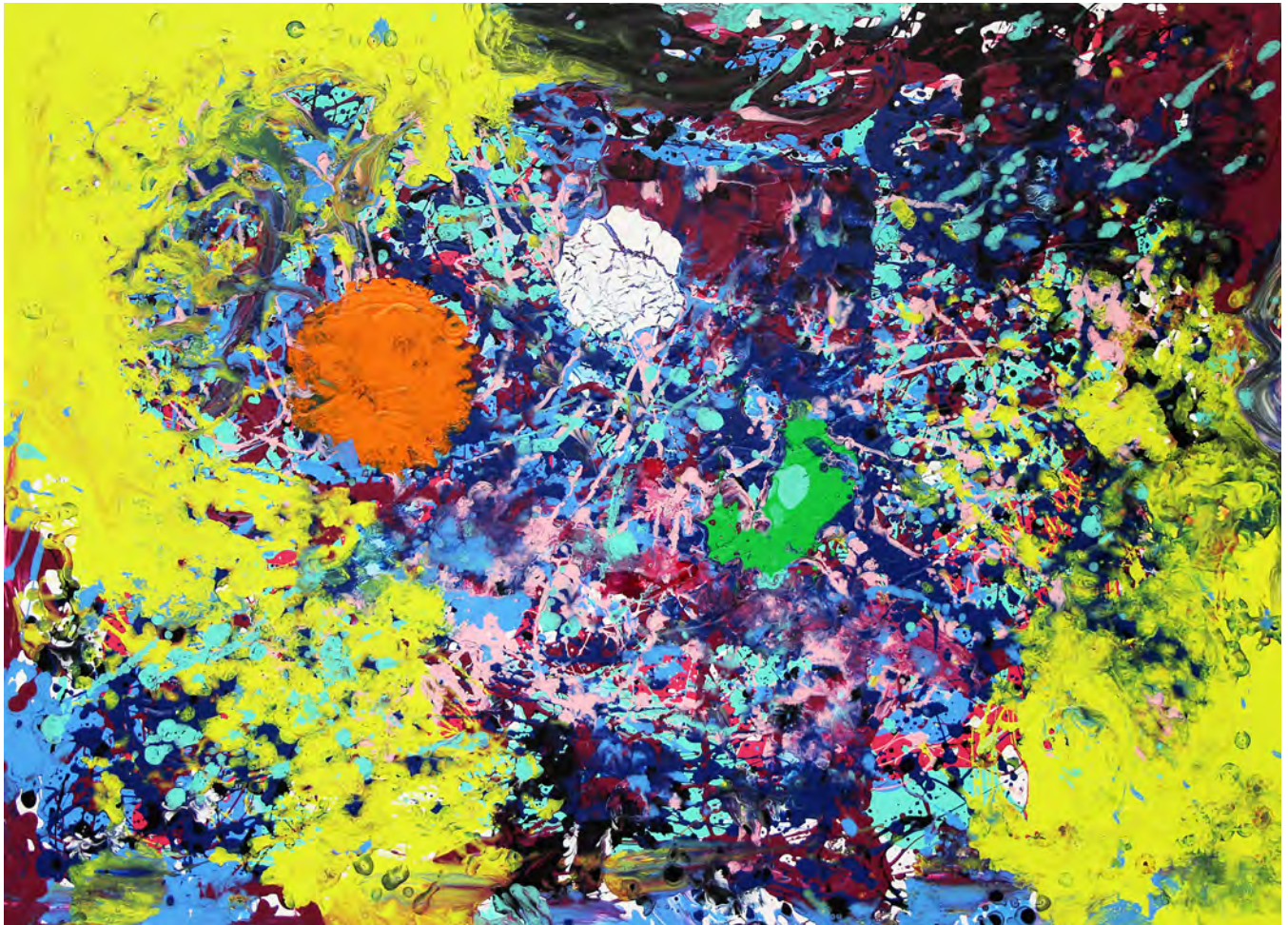
Christine Wirthwein



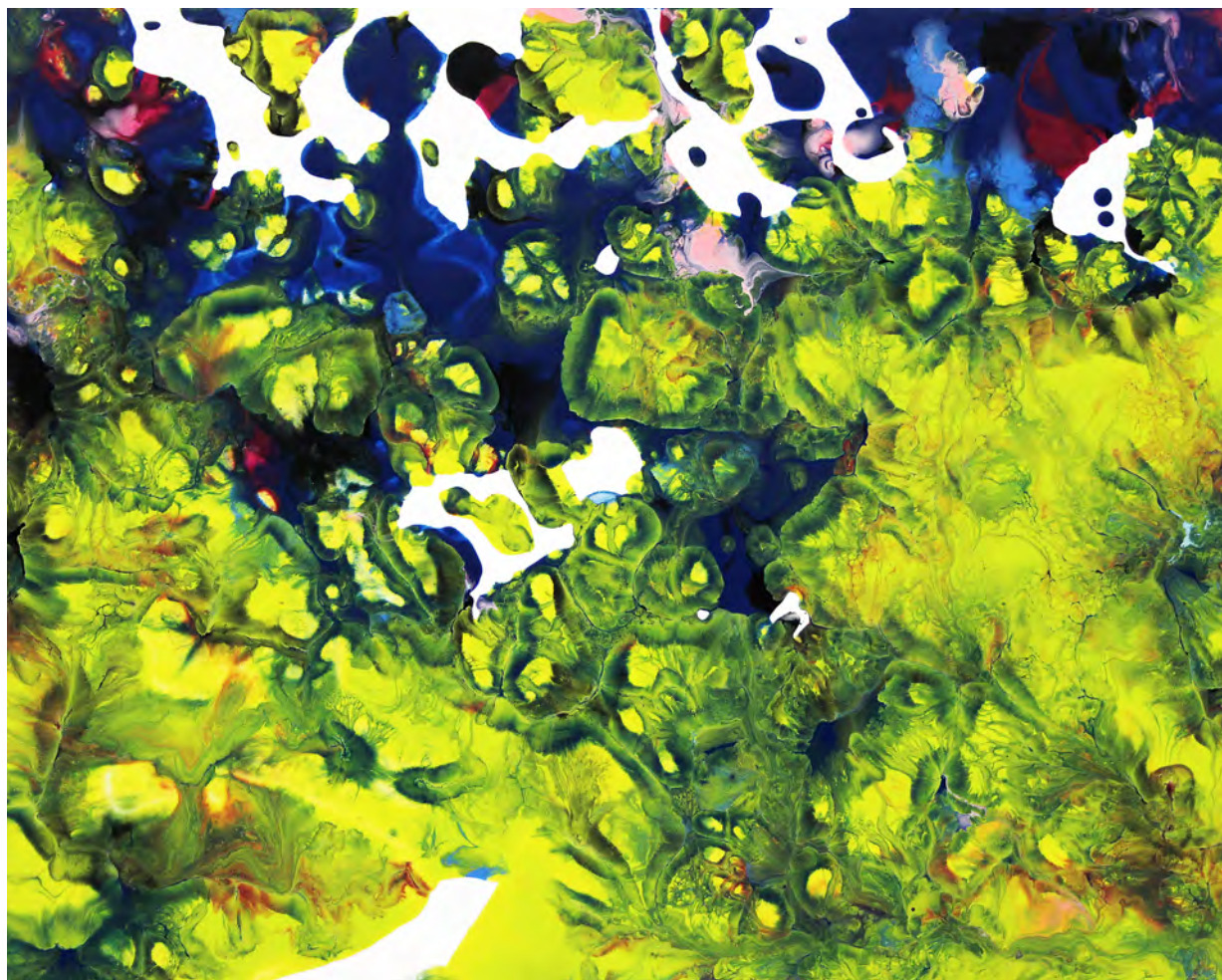
Tripp Higgins



Melinda Whitehead



Cluffalo: Autumn 2016 Second State, 2016, latex on expanded pvc, 32 x 44 inches



Mono-print 2016_10_02_01, 2016, latex on expanded pvc, 8 x 10 inches



Mono-print 2016_10_02_02, 2016, latex on expanded pvc, 8 x 10 inches



Mono-print 2016_10_02_03, 2016, latex on expanded pvc, 8 x 10 inches



Mono-print 2016_10_02_04, 2016, latex on expanded pvc, 8 x 10 inches



Mono-print 2016_10_02_05, 2016, latex on expanded pvc, 8 x 10 inches



Morghan Prince



Kenleigh Prince



Kate Prince



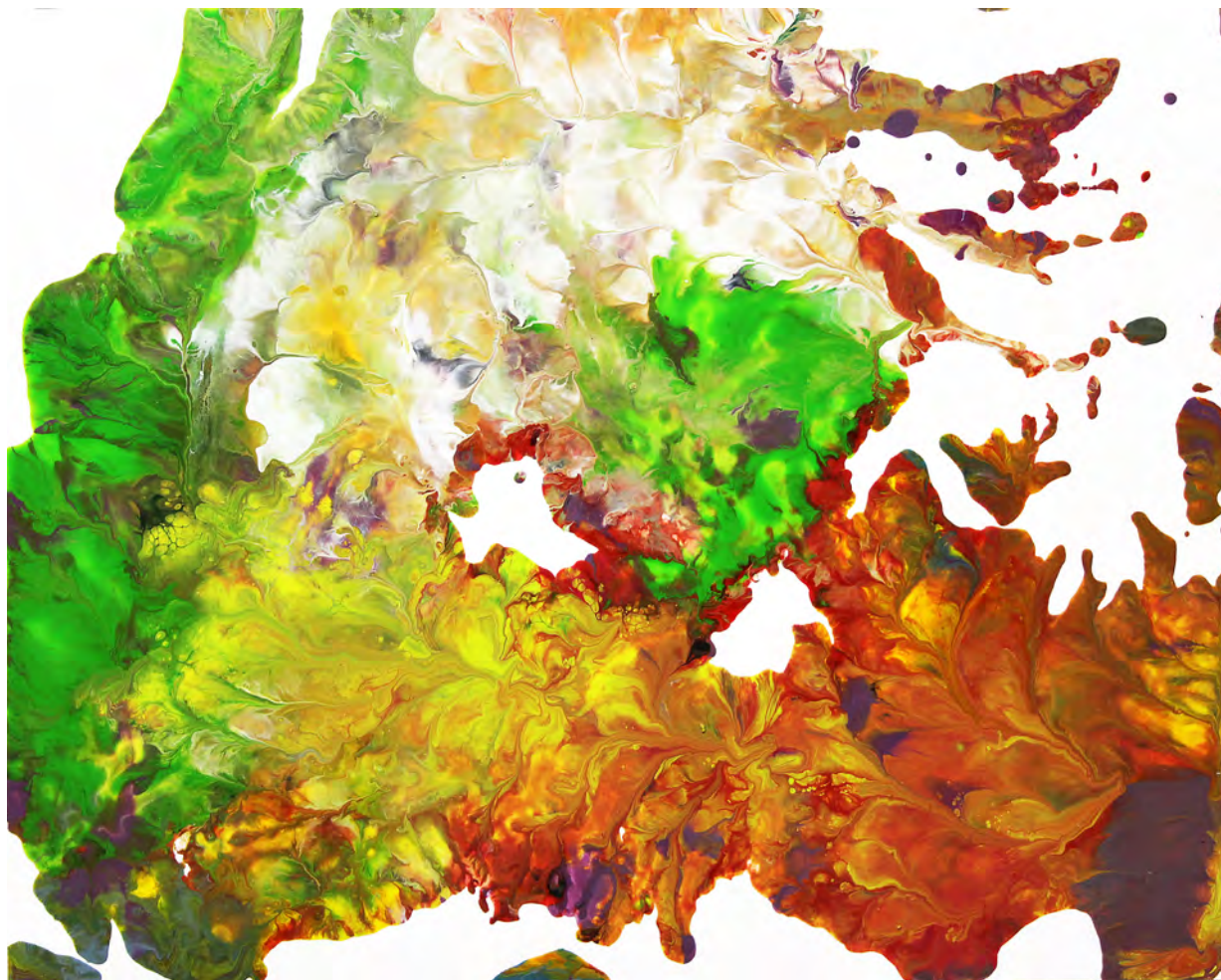
Denice Prince



Kevin Prince



Cluffalo: Autumn 2016 Third State, 2016, latex on expanded pvc, 32 x 44 inches



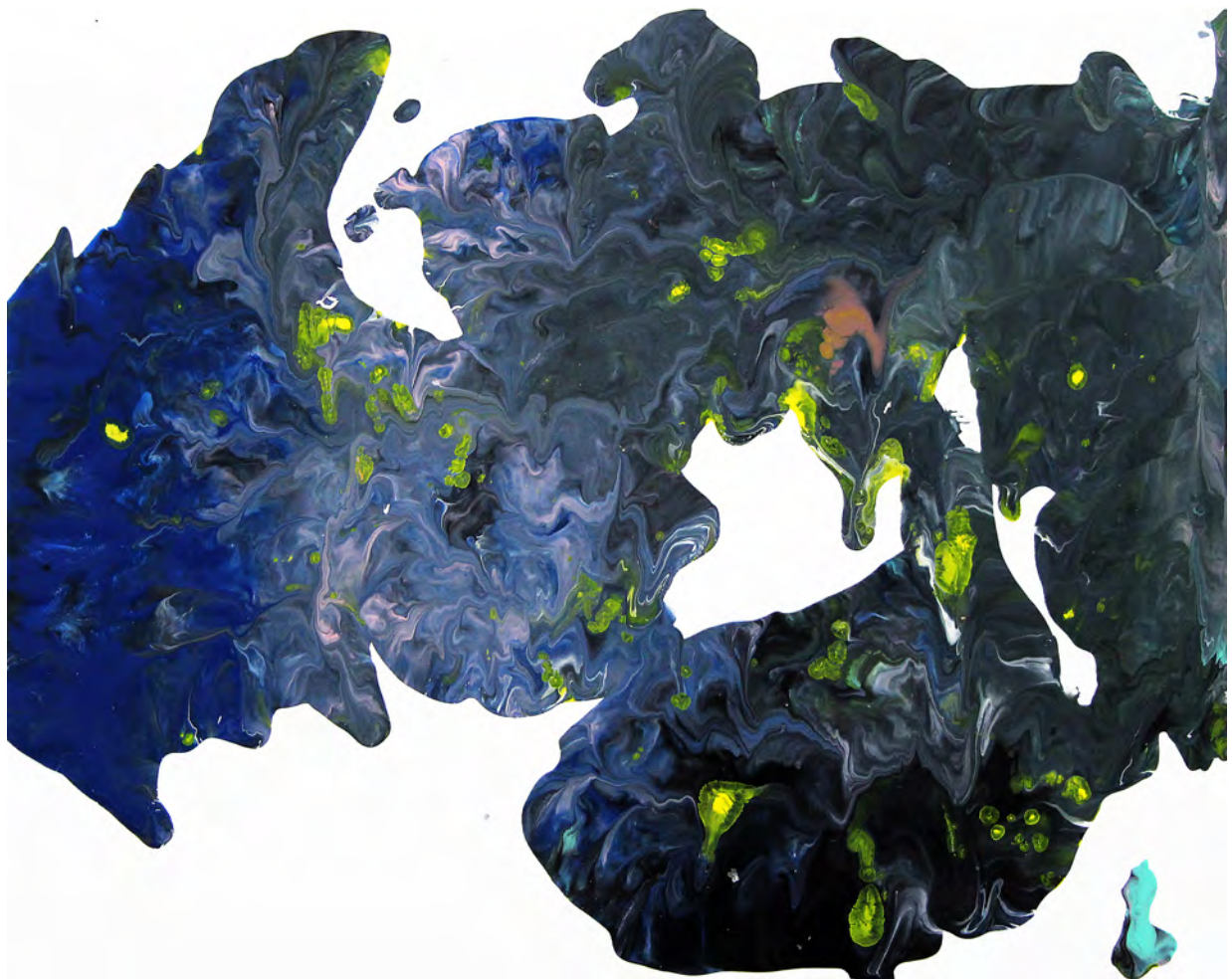
Mono-print 2016_10_04_01, 2016, latex on expanded pvc, 8 x 10 inches



Mono-print 2016_10_04_02, 2016, latex on expanded pvc, 8 x 10 inches



Mono-print 2016_10_04_03, 2016, latex on expanded pvc, 8 x 10 inches



Mono-print 2016_10_04_04, 2016, latex on expanded pvc, 8 x 10 inches



Mono-print 2016_10_04_05, 2016, latex on expanded pvc, 8 x 10 inches



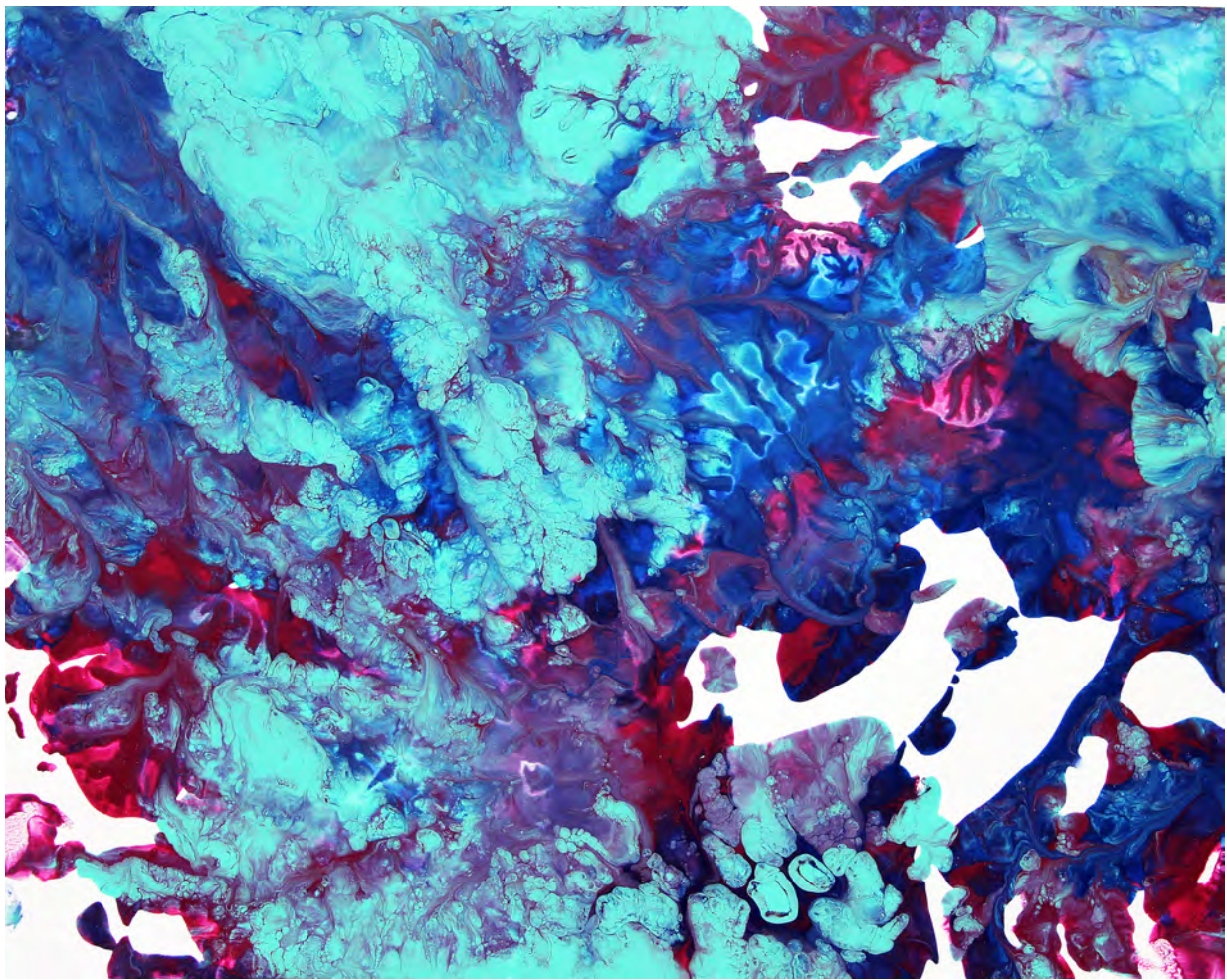
Anne Heinold



Grant Heinold



Cluffalo: Autumn 2016 Fourth State, 2016, latex on expanded pvc, 32 x 44 inches



Mono-print 2016_10_17_01, 2016, latex on expanded pvc, 8 x 10 inches



Mono-print 2016_10_17_02, 2016, latex on expanded pvc, 8 x 10 inches



Ronald N. Bartnik



Cody Regian



Cluffalo: Autumn 2016 Fifth State, 2016, latex on expanded pvc, 32 x 44 inches



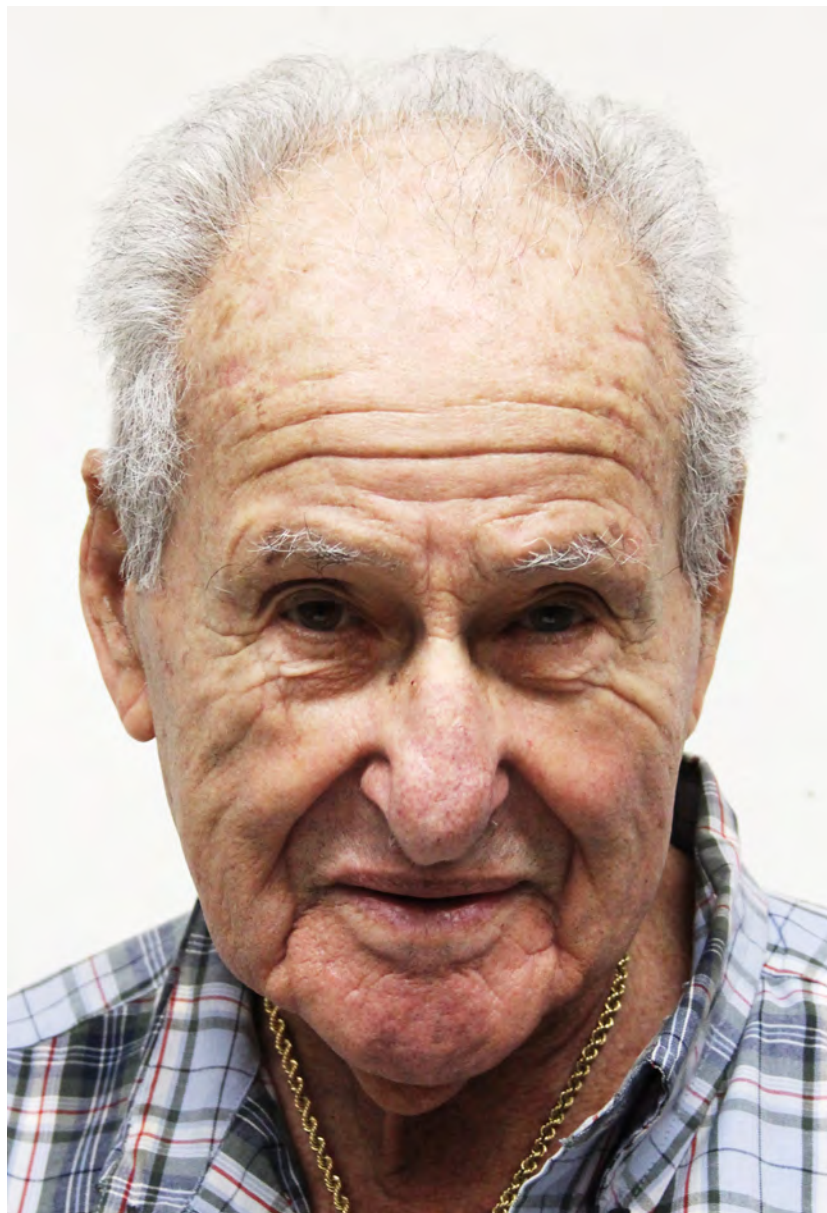
Mono-print 2016_10_22_01, 2016, latex on expanded pvc, 8 x 10 inches



Mono-print 2016_10_22_02, 2016, latex on expanded pvc, 8 x 10 inches



Bill Sidel



Ted Davis



Debra Sidel



Cluffalo: Autumn 2016 Sixth State, 2016, latex on expanded pvc, 32 x 44 inches



Mono-print 2016_10_23_01, 2016, latex on expanded pvc, 8 x 10 inches



Mono-print 2016_10_23_02, 2016, latex on expanded pvc, 8 x 10 inches



Mono-print 2016_10_23_03, 2016, latex on expanded pvc, 8 x 10 inches



Susan Watson



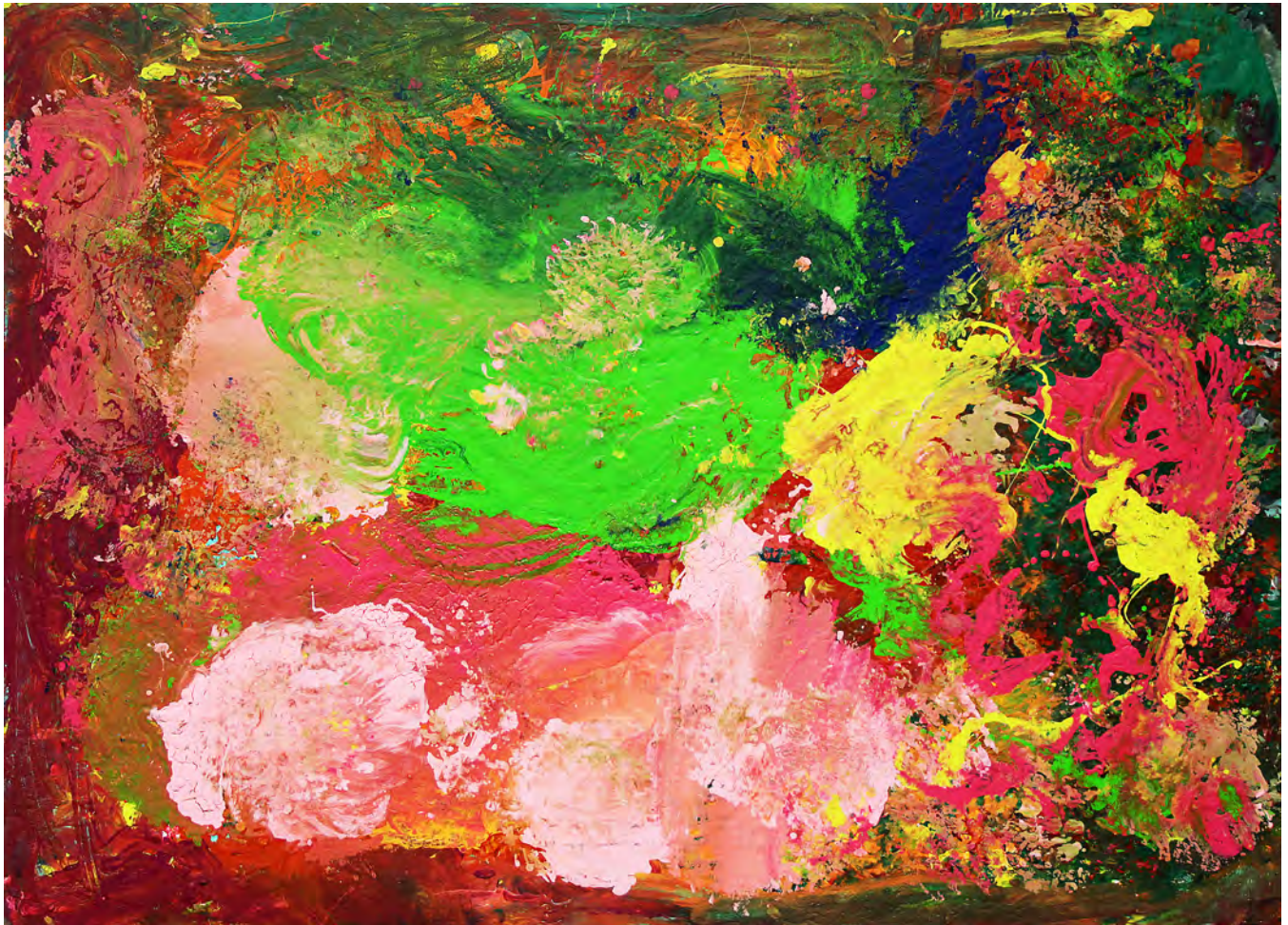
Leyla Rzayev



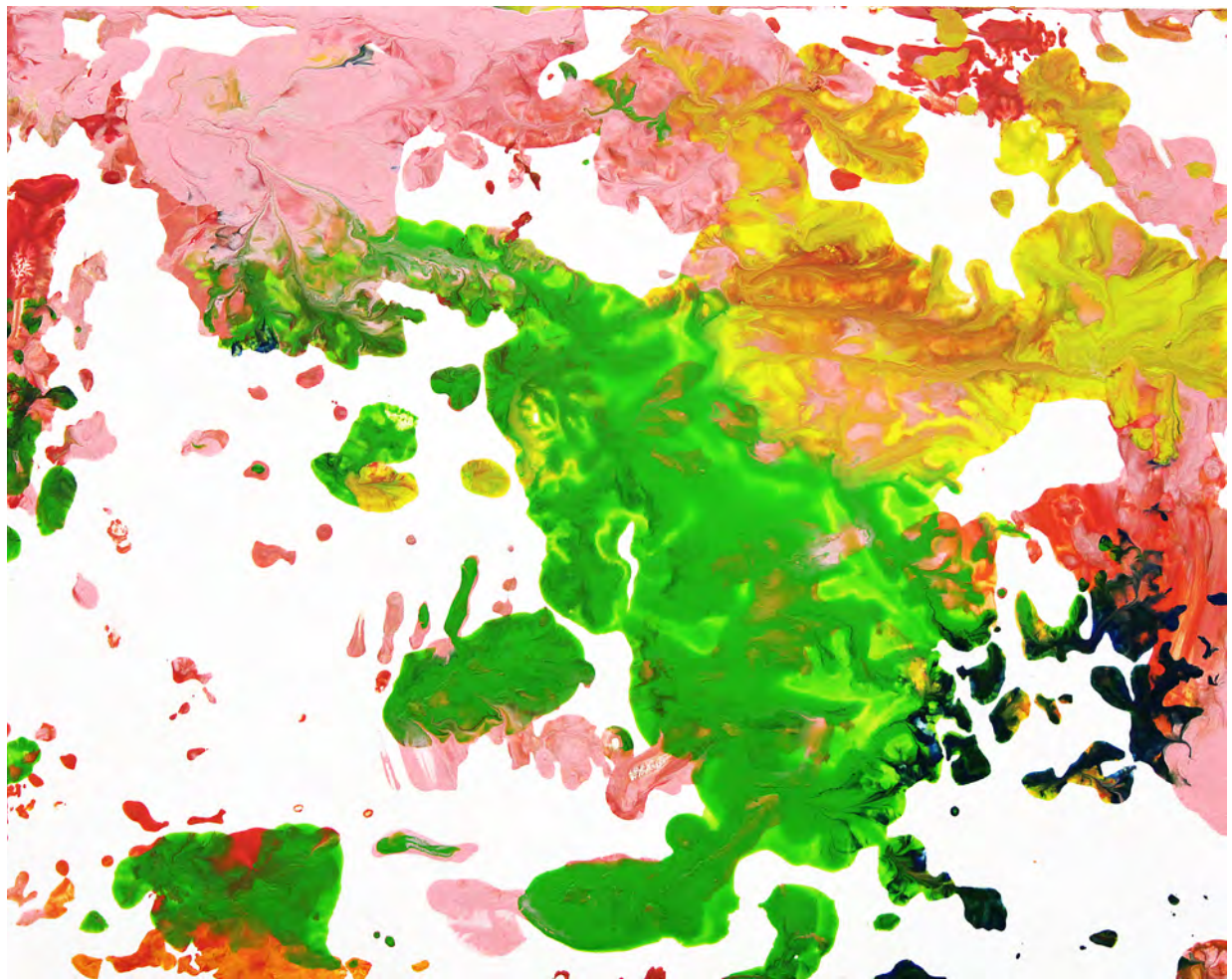
Onur Rzayev



Rachel Rzayev



Cluffalo: Autumn 2016 Seventh State, 2016, latex on expanded pvc, 32 x 44 inches



Mono-print 2016_10_29_01, 2016, latex on expanded pvc, 8 x 10 inches



Mono-print 2016_10_29_02, 2016, latex on expanded pvc, 8 x 10 inches



Ben Clough



Pat Clough



Cluffalo: Autumn 2016 Eighth State, 2016, latex on expanded pvc, 32 x 44 inches



Mono-print 2016_11_05_01, 2016, latex on expanded pvc, 8 x 10 inches



Mono-print 2016_11_05_02, 2016, latex on expanded pvc, 10 x 8 inches



Rick Ohler



Cluffalo: Autumn 2016 Ninth State, 2016, latex on expanded pvc, 32 x 44 inches



Mono-print 2016_11_10_01, 2016, latex on expanded pvc, 10 x 8 inches



Dave Trageser



Cluffalo: Autumn 2016 Tenth State, 2016, latex on expanded pvc, 32 x 44 inches



Mono-print 2016_11_12_01, 2016, latex on expanded pvc, 10 x 8 inches



Peter Hezel



Oliver Hezel



Julian Hezel



Ashley Hezel



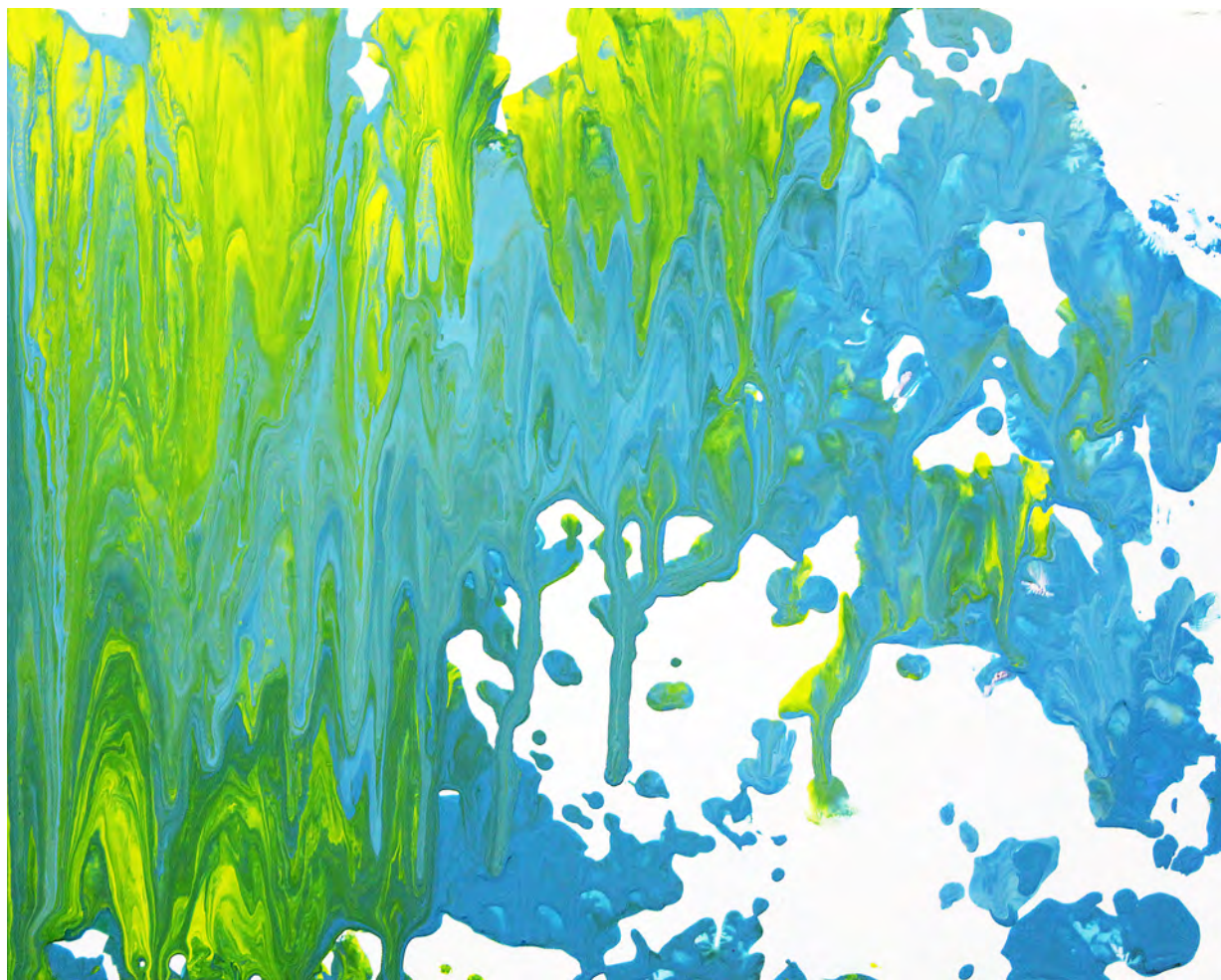
MikeHezel



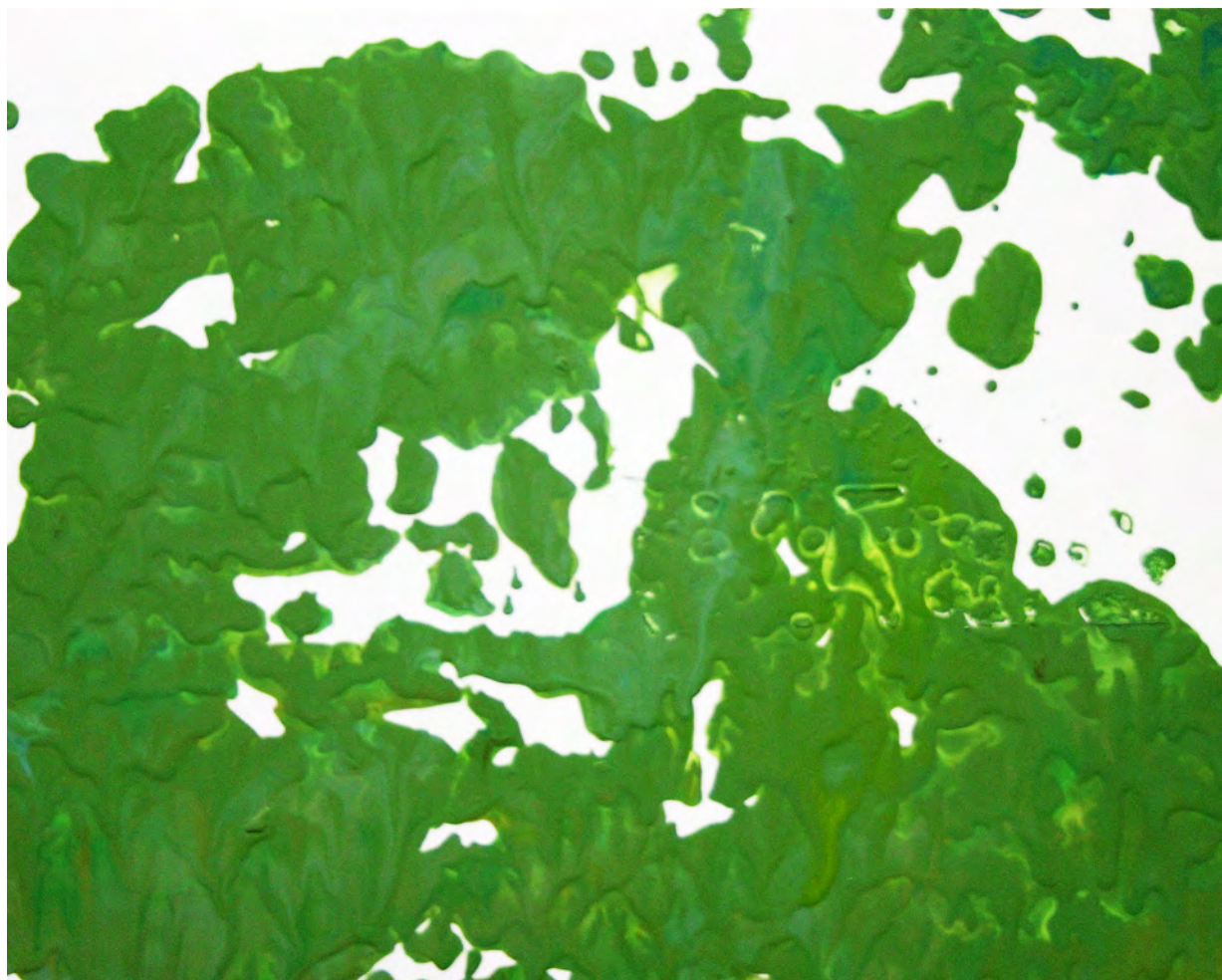
Cluffalo: Autumn 2016 Eleventh State, 2016, latex on expanded pvc, 32 x 44 inches



Mono-print 2016_11_13_01, 2016, latex on expanded pvc, 8 x 10 inches



Mono-print 2016_11_13_02, 2016, latex on expanded pvc, 8 x 10 inches



Mono-print 2016_11_13_03, 2016, latex on expanded pvc, 8 x 10 inches



Jianna Billoni



Nora Kirkley



Bianca Billoni



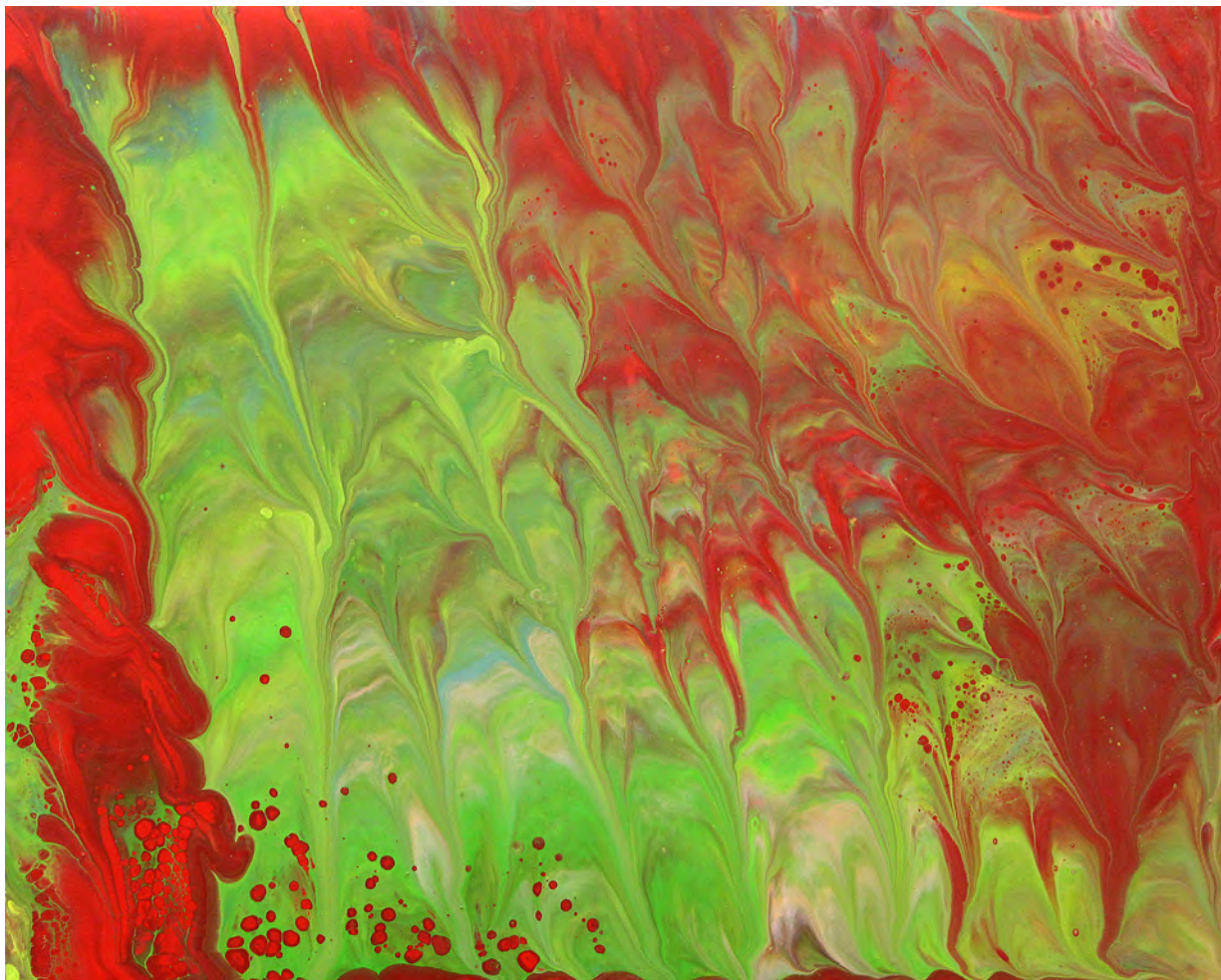
Alaya Kirkley



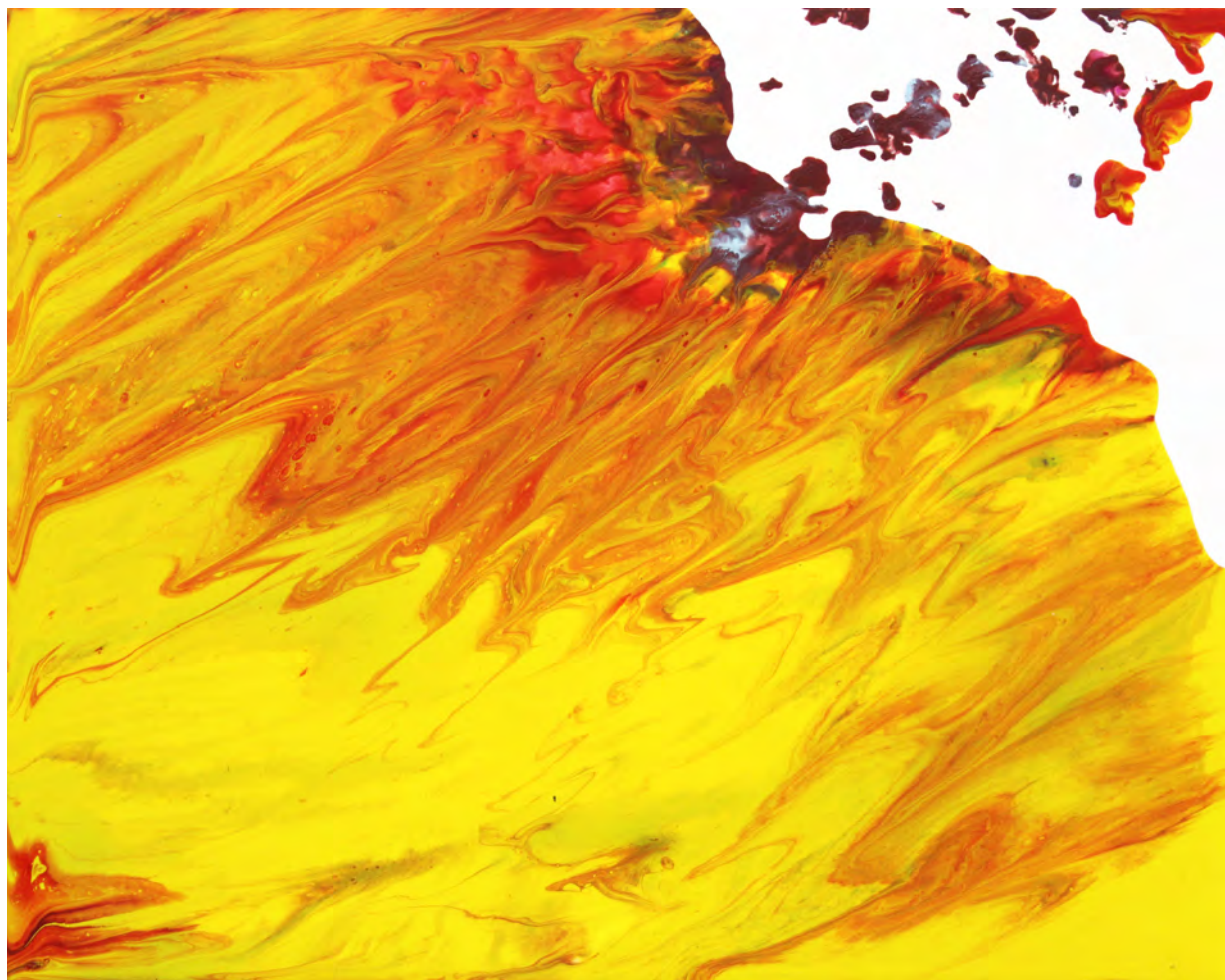
Tony Billoni



Cluffalo: Autumn 2016 Twelfth State, 2016, latex on expanded pvc, 32 x 44 inches



Mono-print 2016_12_04_01, 2016, latex on expanded pvc, 8 x 10 inches



Mono-print 2016_12_04_02, 2016, latex on expanded pvc, 8 x 10 inches



Mono-print 2016_12_04_03, 2016, latex on expanded pvc, 8 x 10 inches



Mono-print 2016_12_04_04, 2016, latex on expanded pvc, 8 x 10 inches



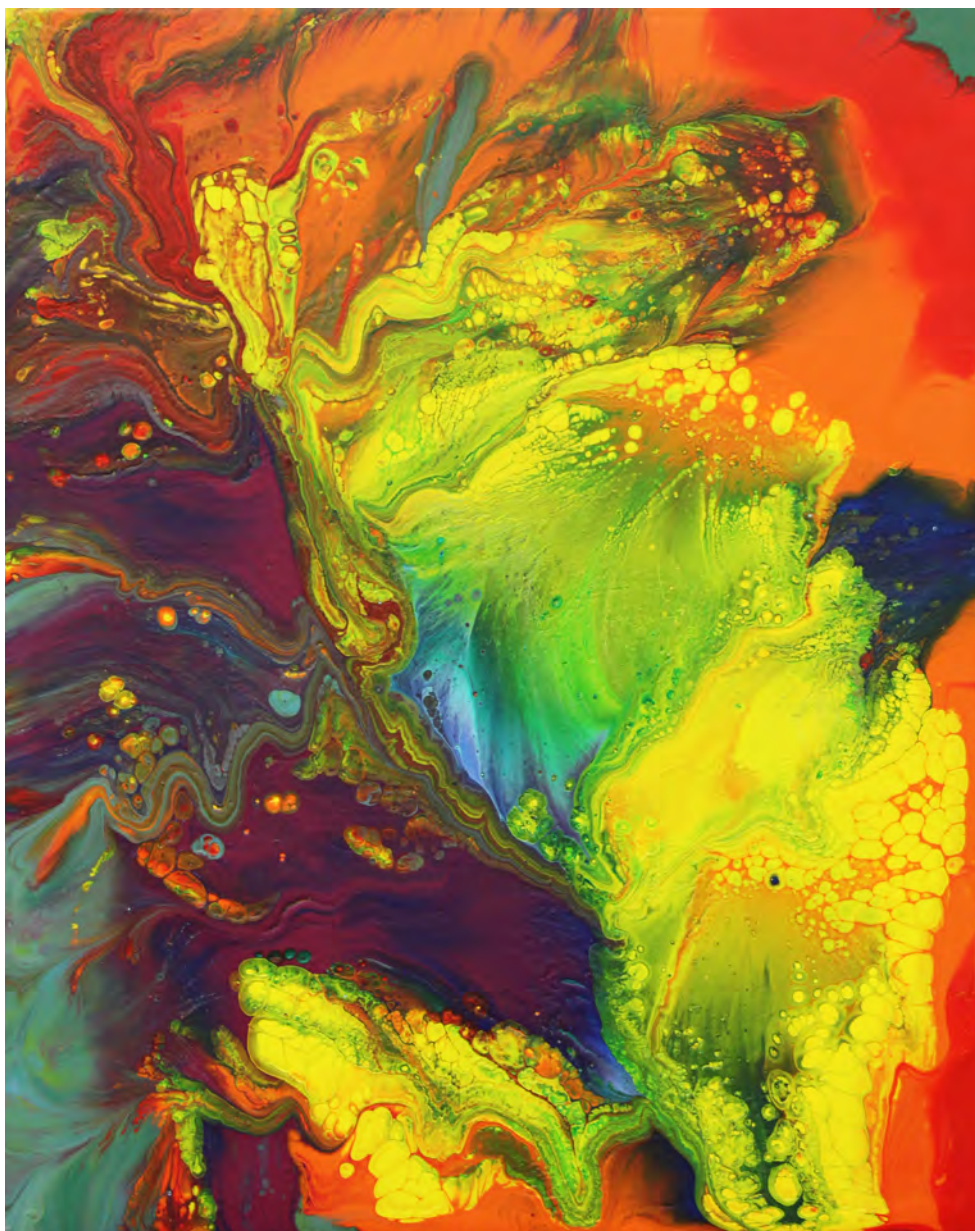
Mono-print 2016_12_04_05, 2016, latex on expanded pvc, 10 x 8 inches



Mono-print 2016_12_04_06, 2016, latex on expanded pvc, 10 x 8 inches



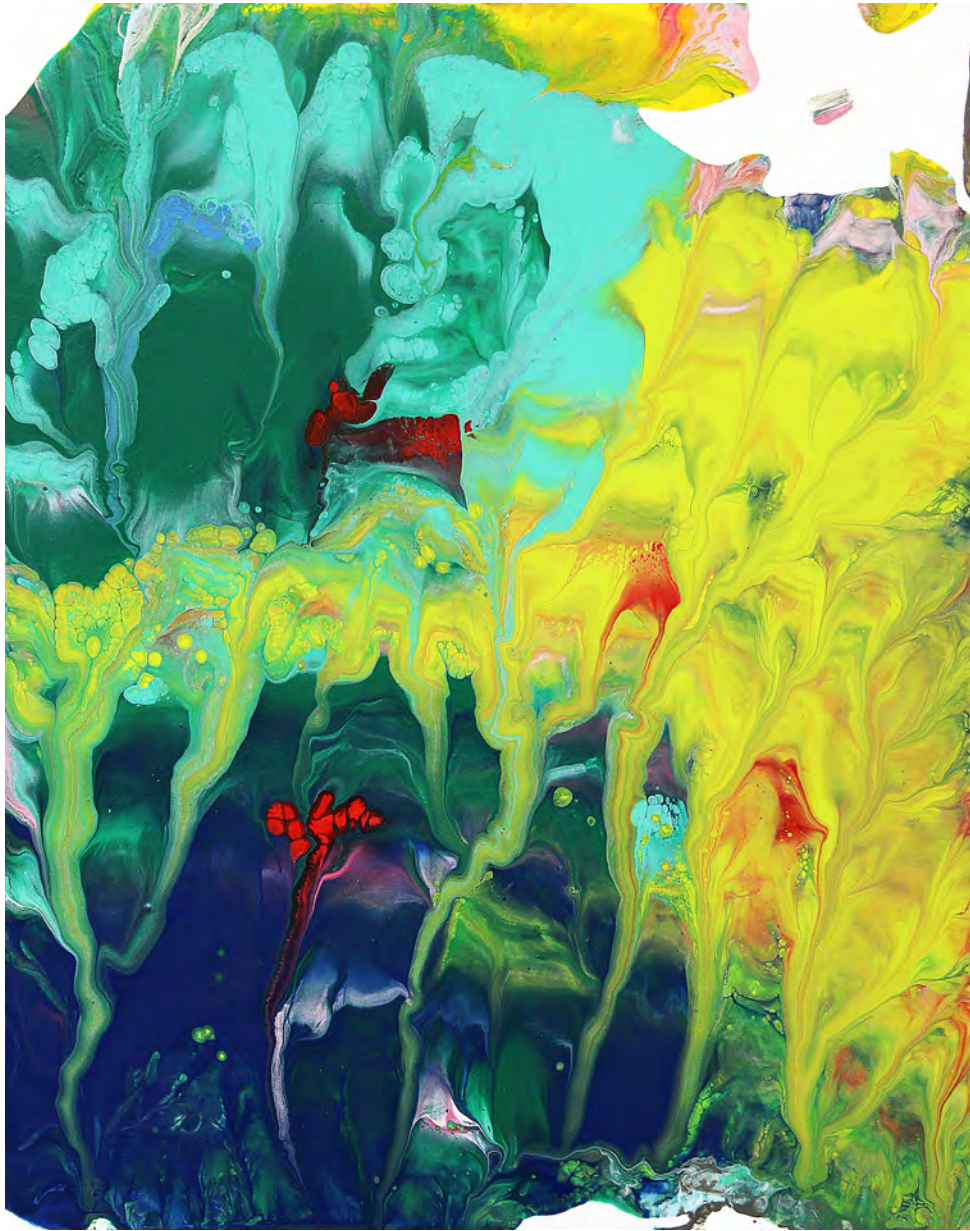
Mono-print 2016_12_04_07, 2016, latex on expanded pvc, 10 x 8 inches



Mono-print 2016_12_04_08, 2016, latex on expanded pvc, 10 x 8 inches



Mono-print 2016_12_04_09, 2016, latex on expanded pvc, 10 x 8 inches



Mono-print 2016_12_04_10, 2016, latex on expanded pvc, 10 x 8 inches



Sean Favata



Corinne Favata



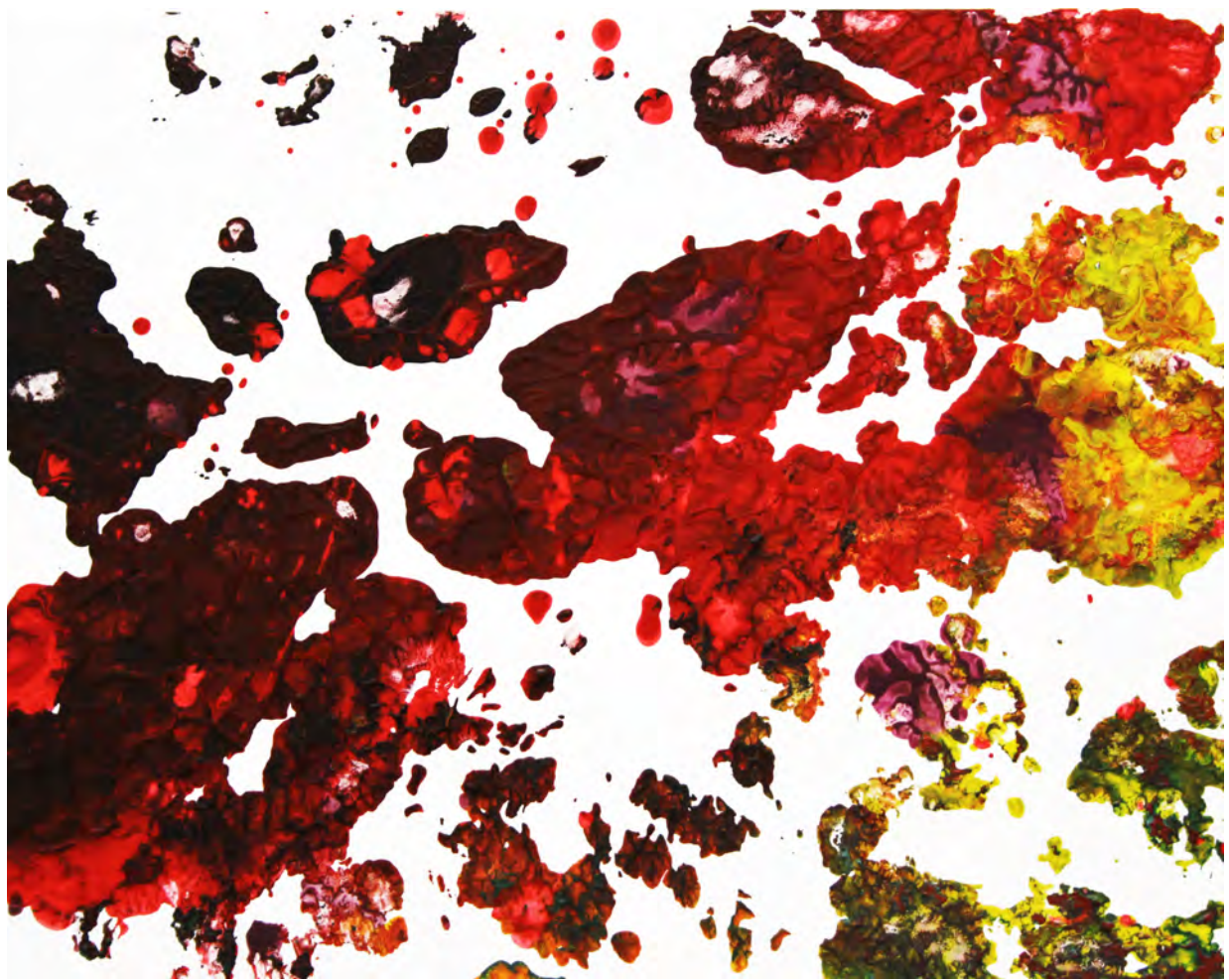
Jill Favata



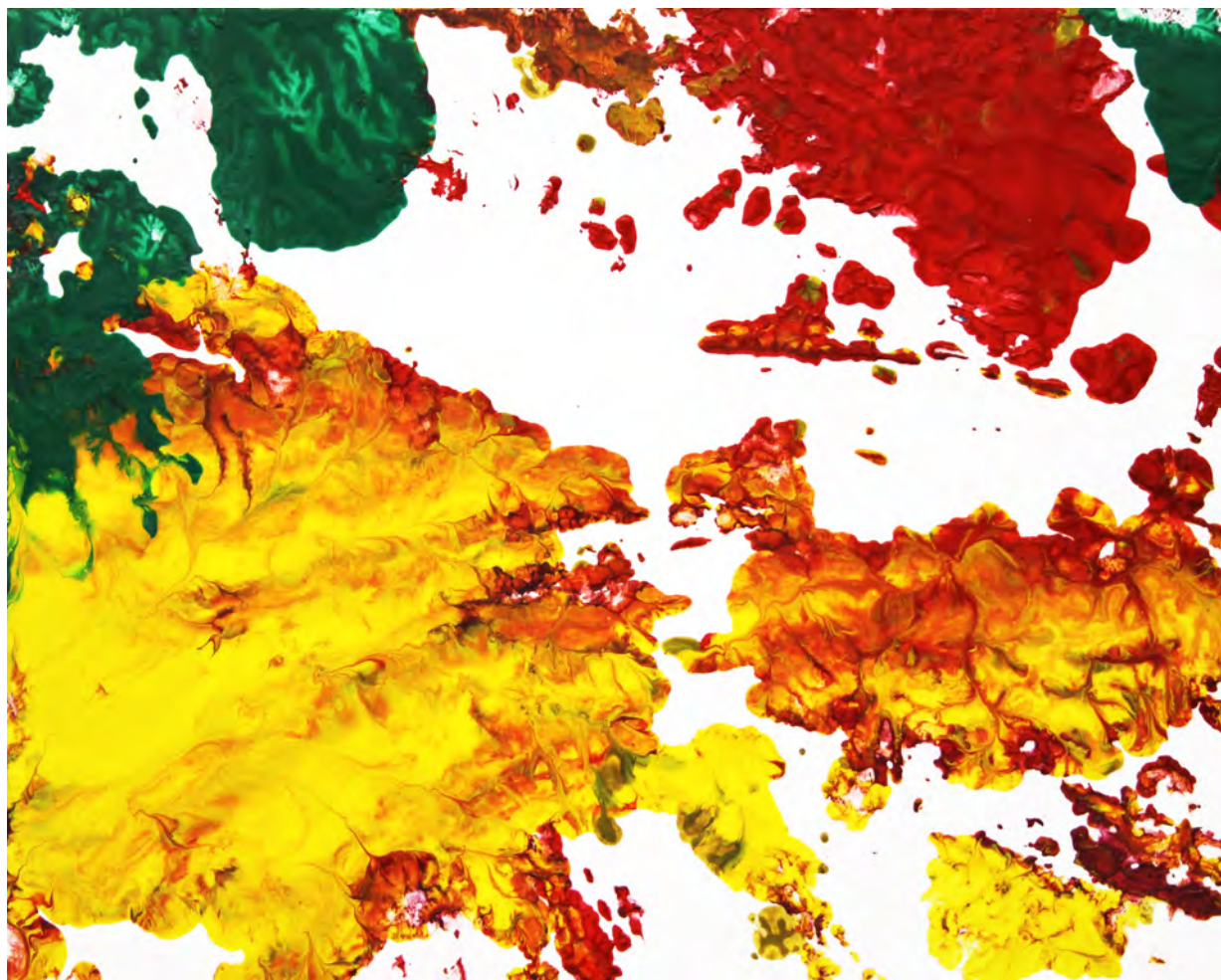
Cluffalo: Autumn 2016 Thirteenth State, 2016, latex on expanded pvc, 32 x 44 inches



Mono-print 2016_12_10_01, 2016, latex on expanded pvc, 10 x 8 inches



Mono-print 2016_12_10_02, 2016, latex on expanded pvc, 8 x 10 inches



Mono-print 2016_12_10_03, 2016, latex on expanded pvc, 8 x 10 inches



Alayna McDonald



Simon McDonald



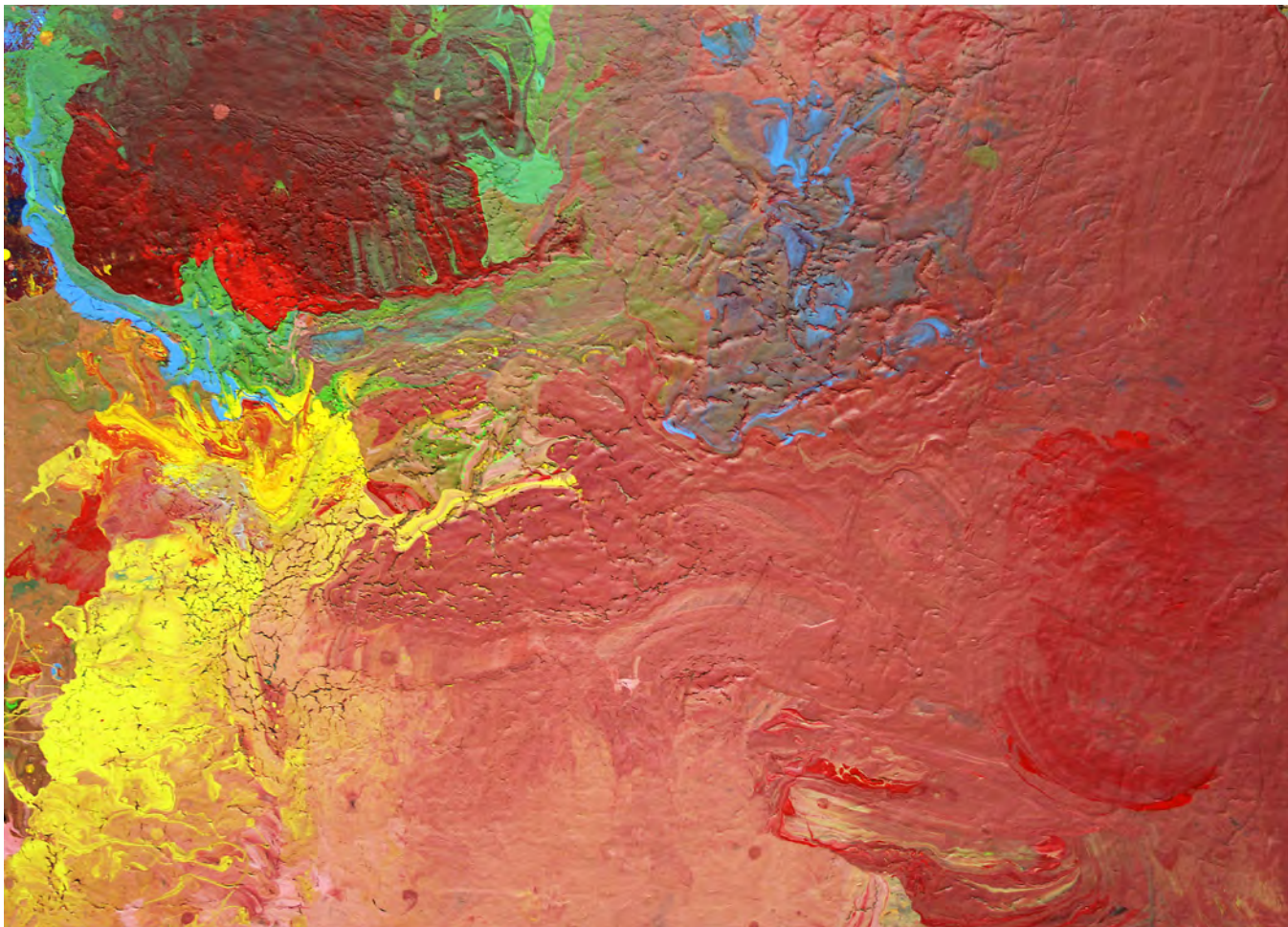
Sophia McDonald



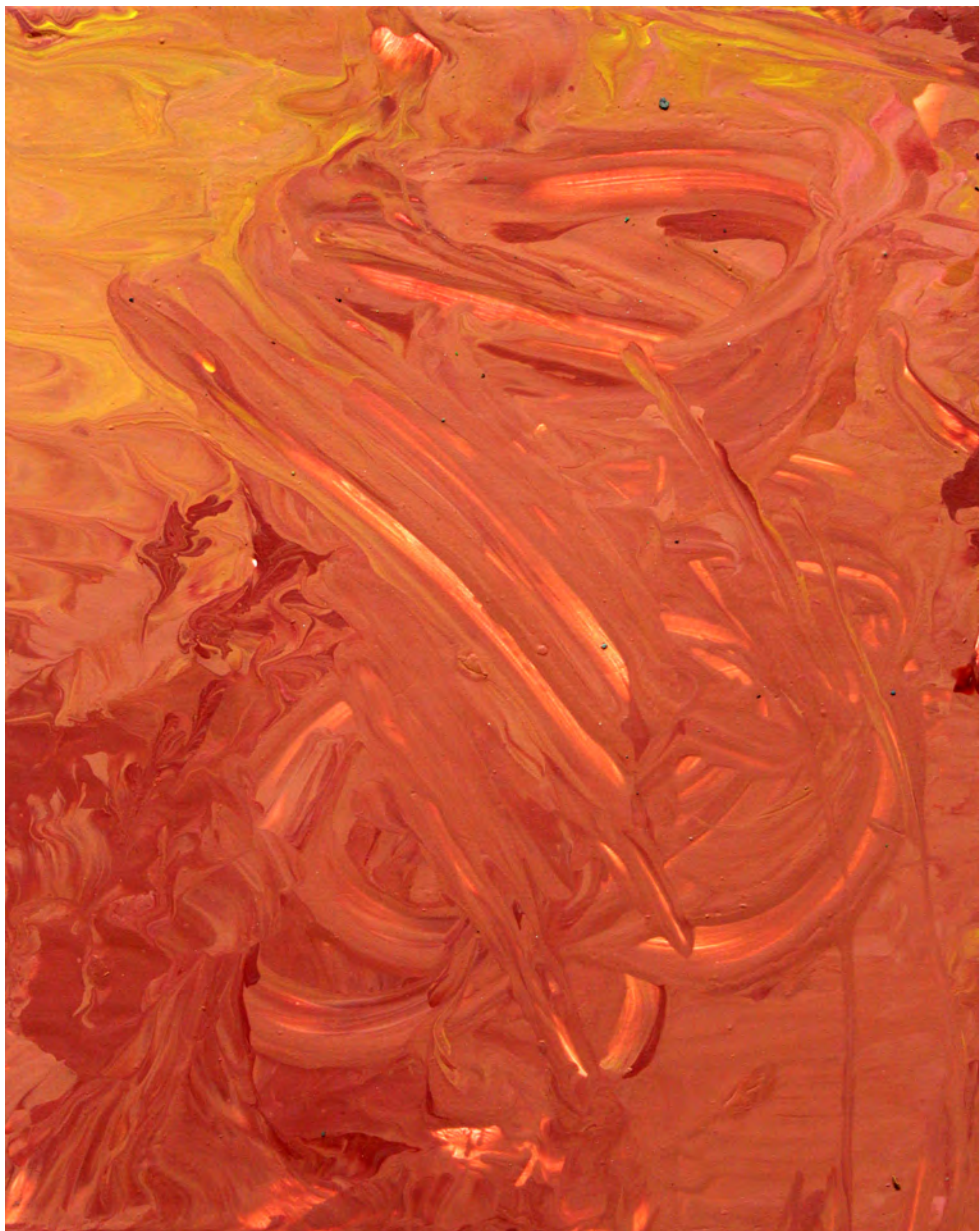
Joseph McDonald



Matthew McDonald



Cluffalo: Autumn 2016 Fourteenth State, 2016, latex on expanded pvc, 32 x 44 inches



Mono-print 2016_12_12_01, 2016, latex on expanded pvc, 10 x 8 inches



Mono-print 2016_12_12_02, 2016, latex on expanded pvc, 10 x 8 inches



Mono-print 2016_12_12_03, 2016, latex on expanded pvc, 10 x 8 inches



Mono-print 2016_12_10_04, 2016, latex on expanded pvc, 8 x 10 inches



Mono-print 2016_12_10_05, 2016, latex on expanded pvc, 8 x 10 inches



Emma Frank



Mikayla Frank



Rebekah Frank



Max Frank



Cluffalo: Autumn 2016 Fifteenth State, 2016, latex on expanded pvc, 32 x 44 inches



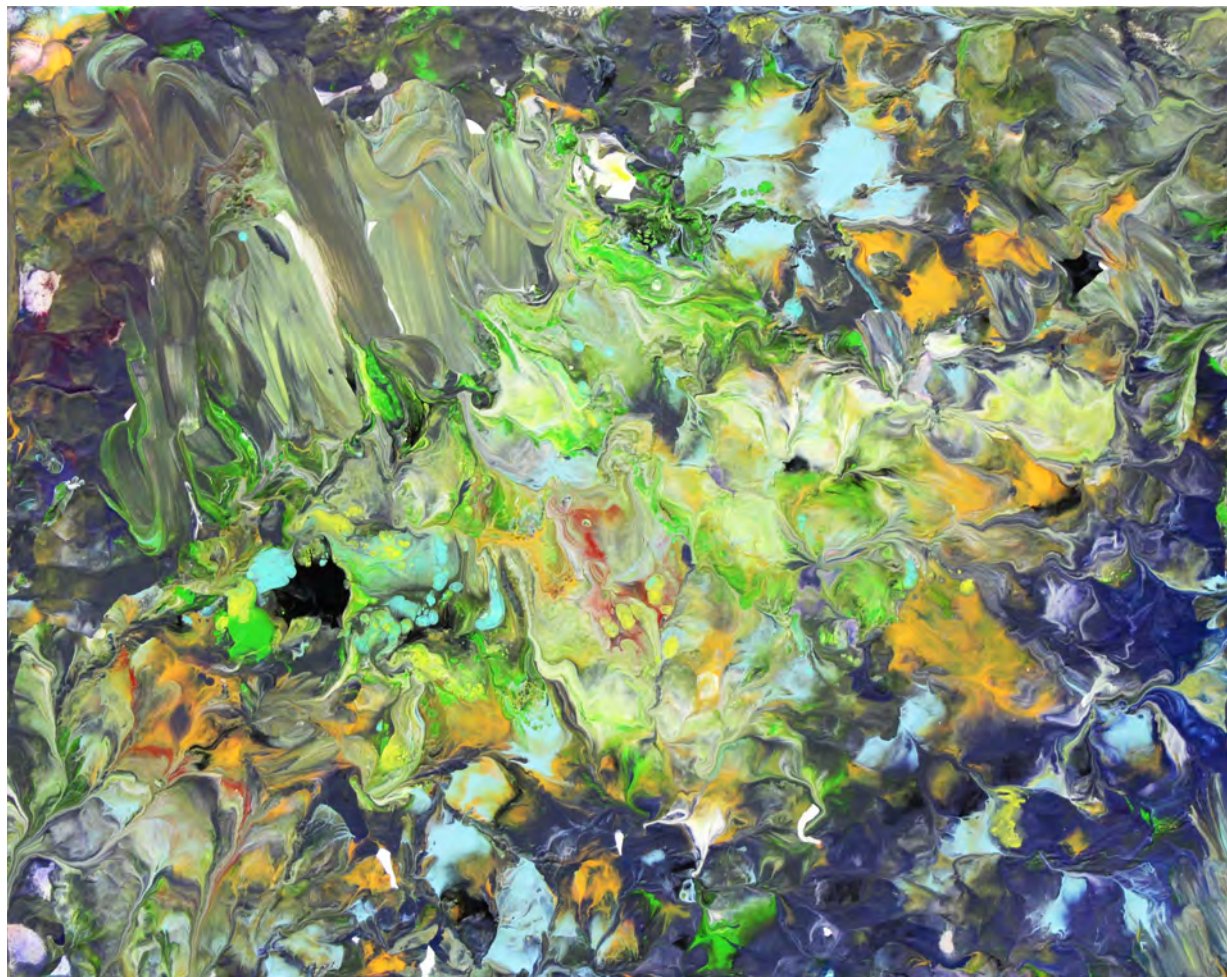
Mono-print 2016_12_13_01, 2016, latex on expanded pvc, 8 x 10 inches



Mono-print 2016_12_13_02, 2016, latex on expanded pvc, 8 x 10 inches



Mono-print 2016_12_13_03, 2016, latex on expanded pvc, 8 x 10 inches



Mono-print 2016_12_13_04, 2016, latex on expanded pvc, 8 x 10 inches



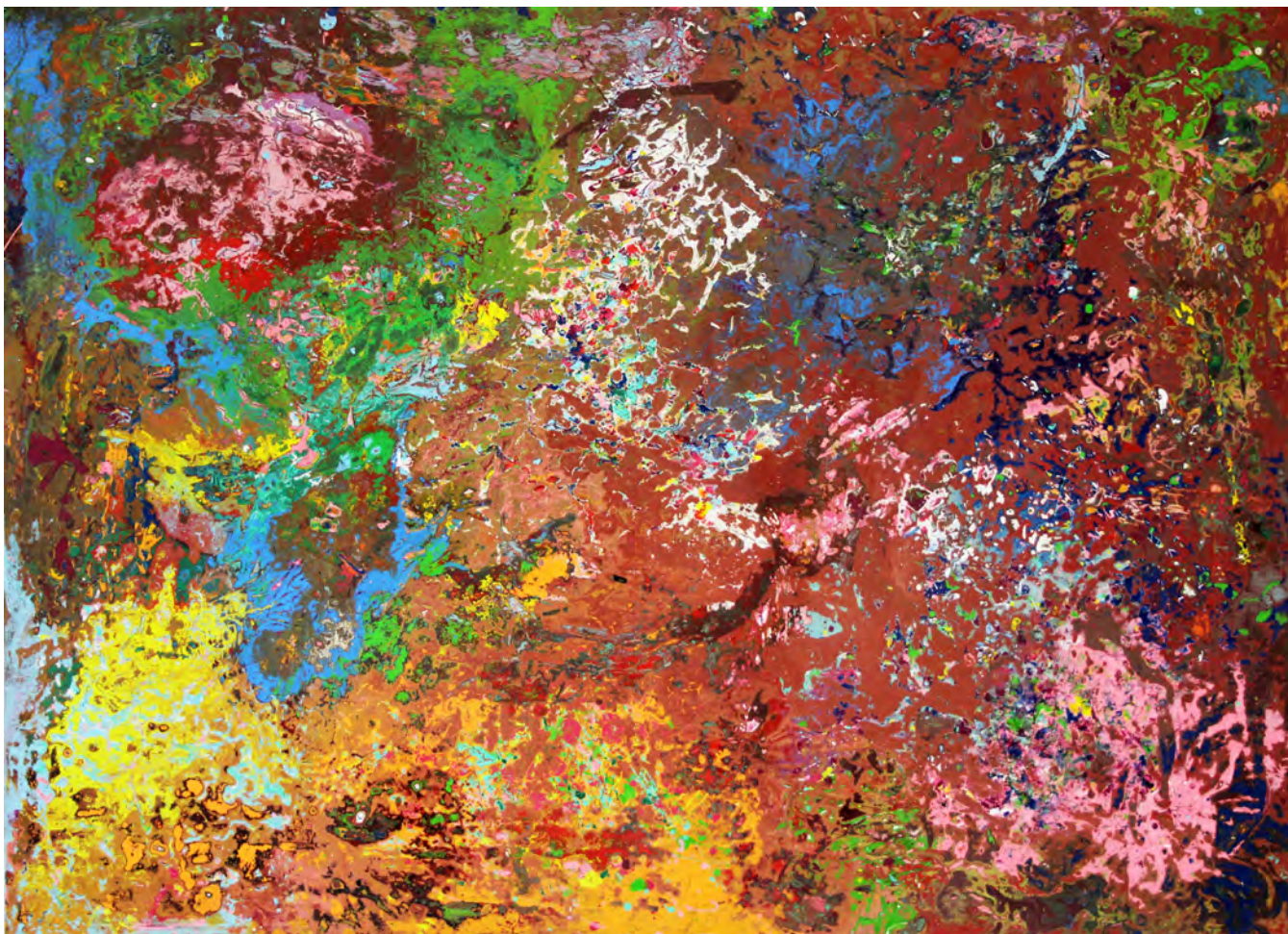
Mono-print 2016_12_13_05, 2016, latex on expanded pvc, 10 x 8 inches



Cluffalo: Autumn 2016 First Grind, 2016, latex on expanded pvc, 32 x 44 inches



Cluffalo: Autumn 2016 Second Grind, 2016, latex on expanded pvc, 32 x 44 inches



Cluffalo: Autumn 2016 Third Grind, 2016, latex on expanded pvc, 32 x 44 inches



Cluffalo: Autumn 2016, 2016, latex on expanded pvc, 32 x 44 inches