

CHARLES CLOUGH:
CLUFFFALO: SPRING 2016

I established the Clufffalo Institute in 2012 to manage my archive and collection and to promote and administer the Clufffalo Painting Experience for museums, onsite, globally, and for individuals and small groups at the Roycroft in East Aurora, New York.

Clufffalo: Spring 2016 has been supported by the John Simon Guggenheim Memorial Foundation.

Here are the painters and the states of the painting made in my studio in The Print Shop at The Roycroft in the Spring of 2016.

ISBN: 978-1-365-29127-2

© Charles Clough 2016

www.clufff.com

Cover: *Clufffalo: Spring 2016*, 2016, latex on expanded pvc, 32 x 44 inches

After years of studying art, on January 5th, 1971, I came to the conclusion that I would “devote my life to art”. This was in East Aurora, New York. I went on to move my studio to Buffalo at the Ashford Hollow Foundation’s Essex Street facility, then to many locations in New York City, then to Westerly, Rhode Island and then back to Buffalo and East Aurora.

Upon the studio’s return to Western New York, I neologized my url, clufff.com, into The Clufffalo Institute, to encompass my collection, archive and Painting Workshop. The Painting Workshop is located in The Print Shop on The Roycroft Campus in East Aurora. It extends my interest in engaging the public to make paintings with me, which I first presented in 1975. The Workshop is based on the format of a studio visit of an hour or two. Participants may be individuals or groups of up to six people (based on the space of the workshop). Toddlers to any age are invited, and, whatever the participant’s degree of art sophistication, a special experience will be found. My approach to painting is “painterly, gestural abstraction”, rooted in 10th Century Chinese brushwork, J.M.W. Turner, Impressionism, Fauvism, Surrealism, and Abstract Expressionism. Participants will be offered materials and use of my unique “big finger” painting tools to make a work to take home. Participation in the Clufffalo Painting Workshop is based on a fee of \$100 per session for up to 6 participants. Boards for the take-away painting are available at 8 x10 inches: included, 16 x 20 inches: \$50, 24 x 32 inches \$100.

Each season an ongoing painting will be available for participants to add to and Charles Clough to “edit” by grinding through the layers of paint and polishing its surface. The structure of this book consists of photos of the participants, followed by their state of the painting, followed by mon-prints (if made). Pages 80-104 depict stereo photos of the surface of the painting, which I found irresistible to shoot—cross your eyes to superimpose the paired images for the illusion of three-dimensional space. Here is the history of *Clufffalo Spring 2016*.

—Charles Clough, 7/11/2016



Liz Hezel



Joe Hezel



Patty Hezel



Cluffalo: Spring 2015 First State, 2016, latex on expanded pvc, 32 x 44 inches



Amy Rob



Cluffalo: Spring 2016 Second State, 2016, latex on expanded pvc, 32 x 44 inches



Rebecca Wing



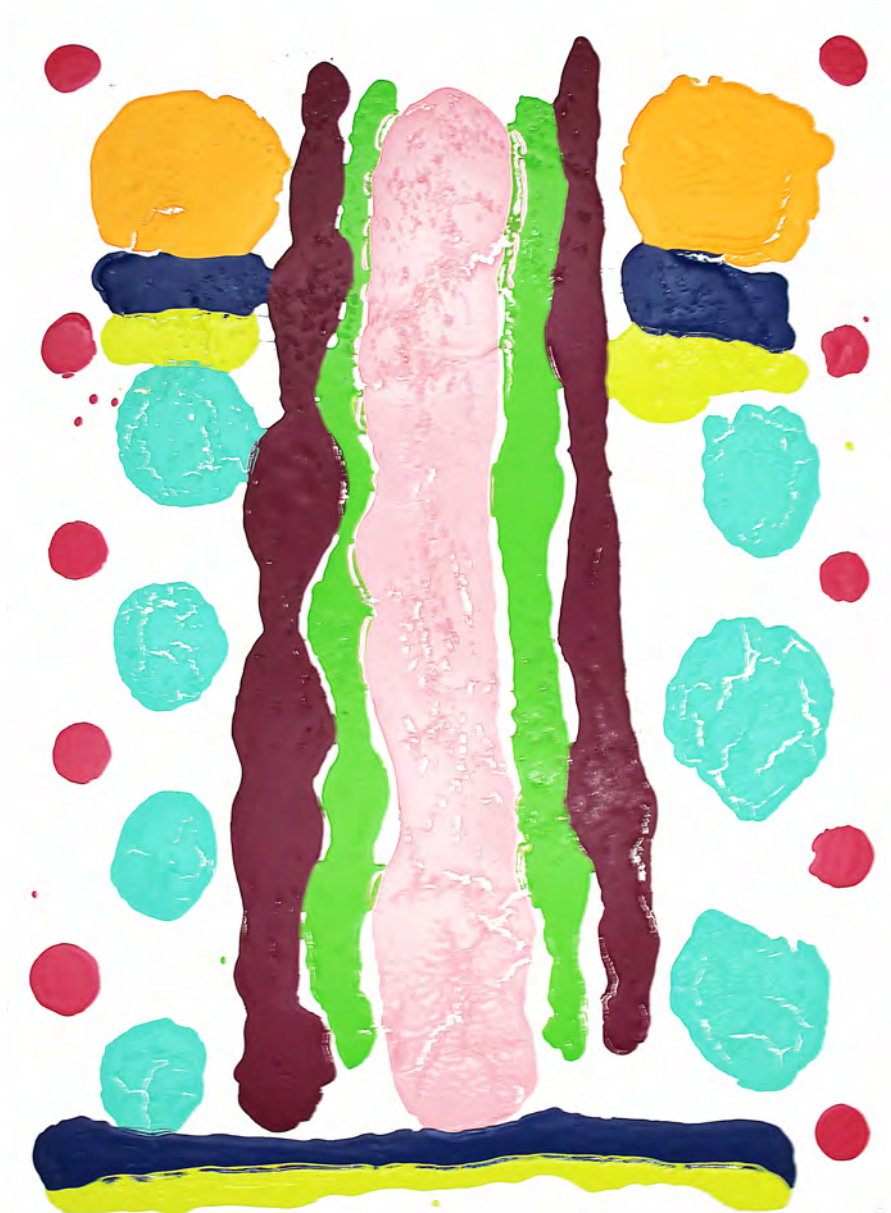
John Massier



Cluffalo: Spring 2016 Third State, 2016, latex on expanded pvc, 32 x 44 inches



Tina Dillman



Cluffalo: Spring 2016 Fourth State, 2016, latex on expanded pvc, 32 x 44 inches



Mike Taheri



Abby Rose Jones



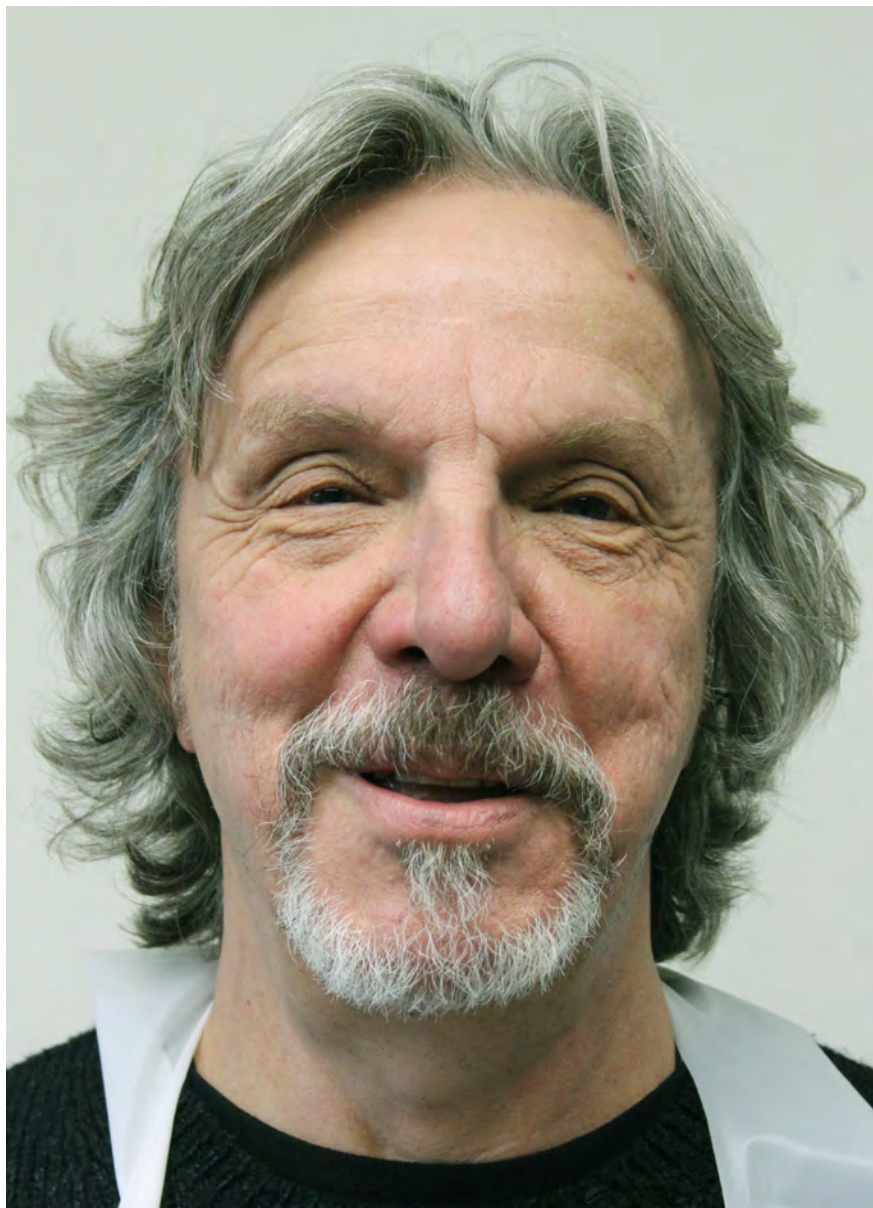
Cluffalo: Spring 2016 Fifth State, 2016, latex on expanded pvc, 32 x 44 inches



Mono-print 2016_04_21_01, 2016, latex on expanded pvc, 10 x 8 inches



Mono-print 2016_04_21_02, 2016, latex on expanded pvc, 10 x 8 inches



Michael Lowe



Cluffalo: Spring 2016 Sixth State, 2016, latex on expanded pvc, 32 x 44 inches



Ed Healy



Cluffalo: Spring 2016 Seventh State, 2016, latex on expanded pvc, 32 x 44 inches



Jen Navicky



Dan Navicky



Cluffalo: Spring 2015 Eighth State, 2015, latex on expanded pvc, 32 x 44 inches



Kevin Clough, Lily Clough, Emily Clough, Amy Clough, Eileen Clough, Alina Clough, Dr. Charles Clough and Tziyyiah Abosch: for many years I have been asked whether I am related to Dr. Charles Clough, the dentist from Orchard Park, and I am not. His son Kevin contacted me to participate in making *Cluffalo: Spring 2016*.



The Cloughs from Orchard Park



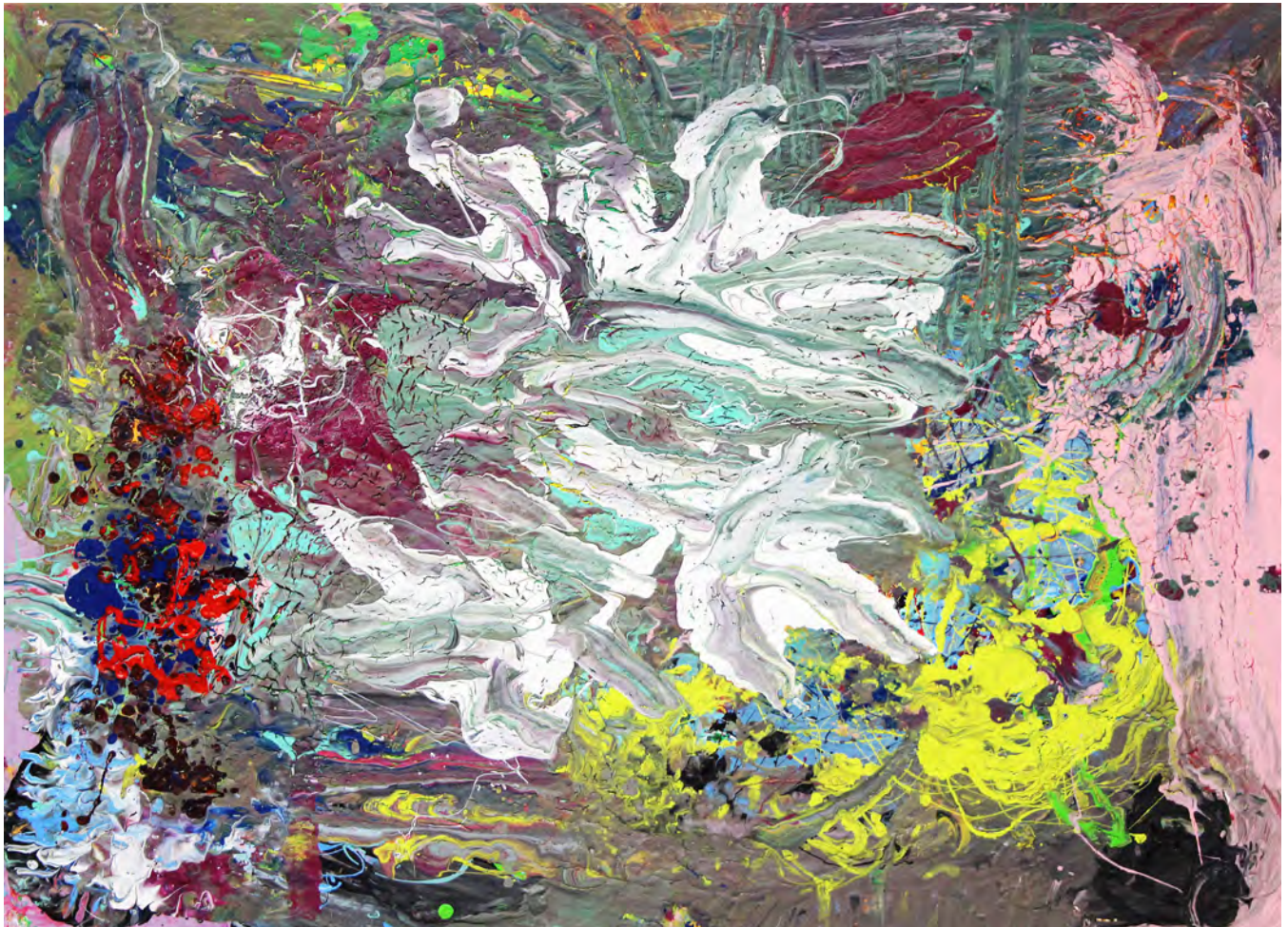
The Cloughs from Orchard Park



The Cloughs from Orchard Park



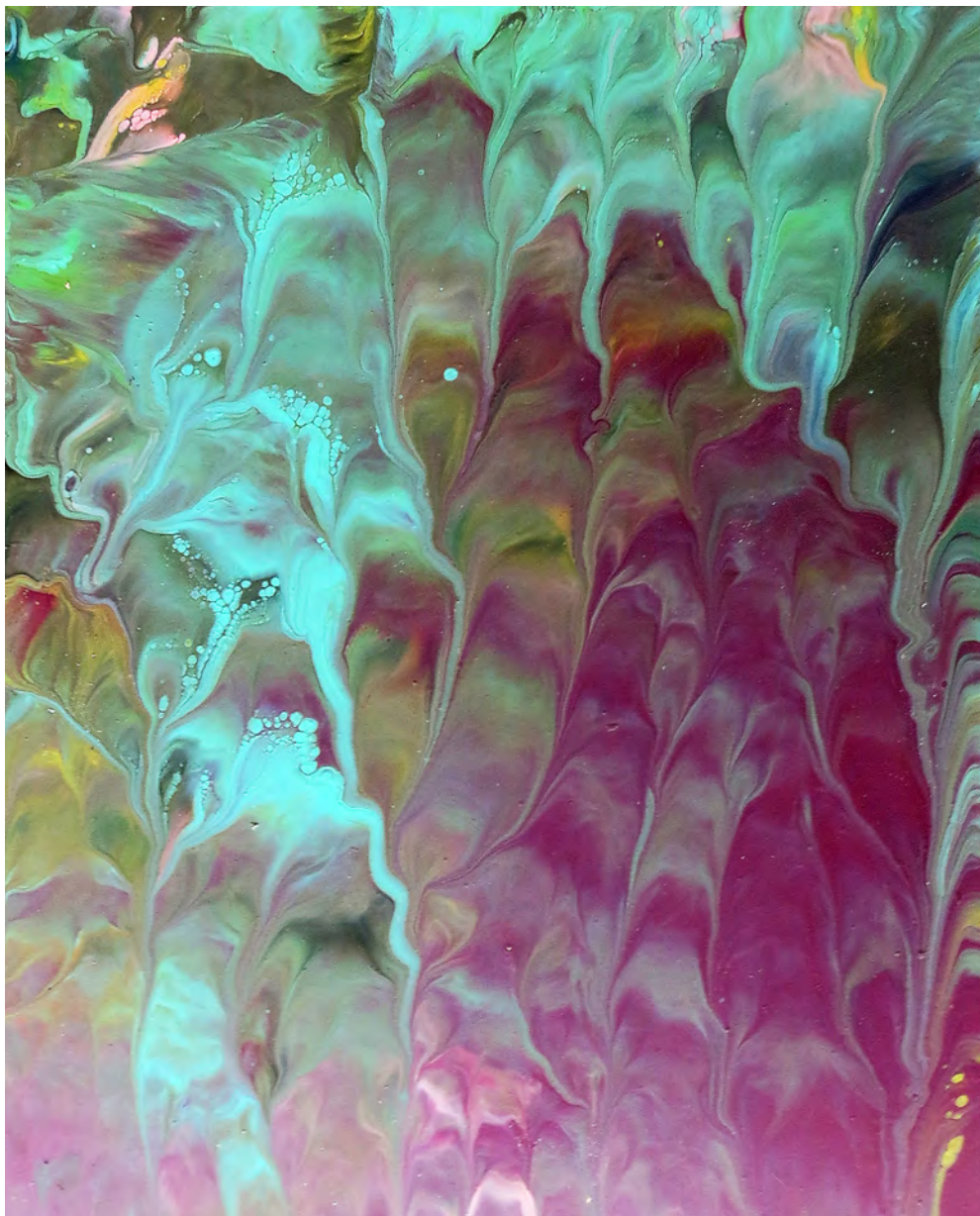
The Cloughs from Orchard Park



Cluffalo: Spring 2016 Ninth State, 2016, latex on expanded pvc, 32 x 44 inches



Mono-print 2016_05_22_01, 2016, latex on expanded pvc, 10 x 8 inches



Mono-print 2016_05_22_02, 2016, latex on expanded pvc, 10 x 8 inches



Mono-print 2016_05_22_03, 2016, latex on expanded pvc, 8 x 10 inches



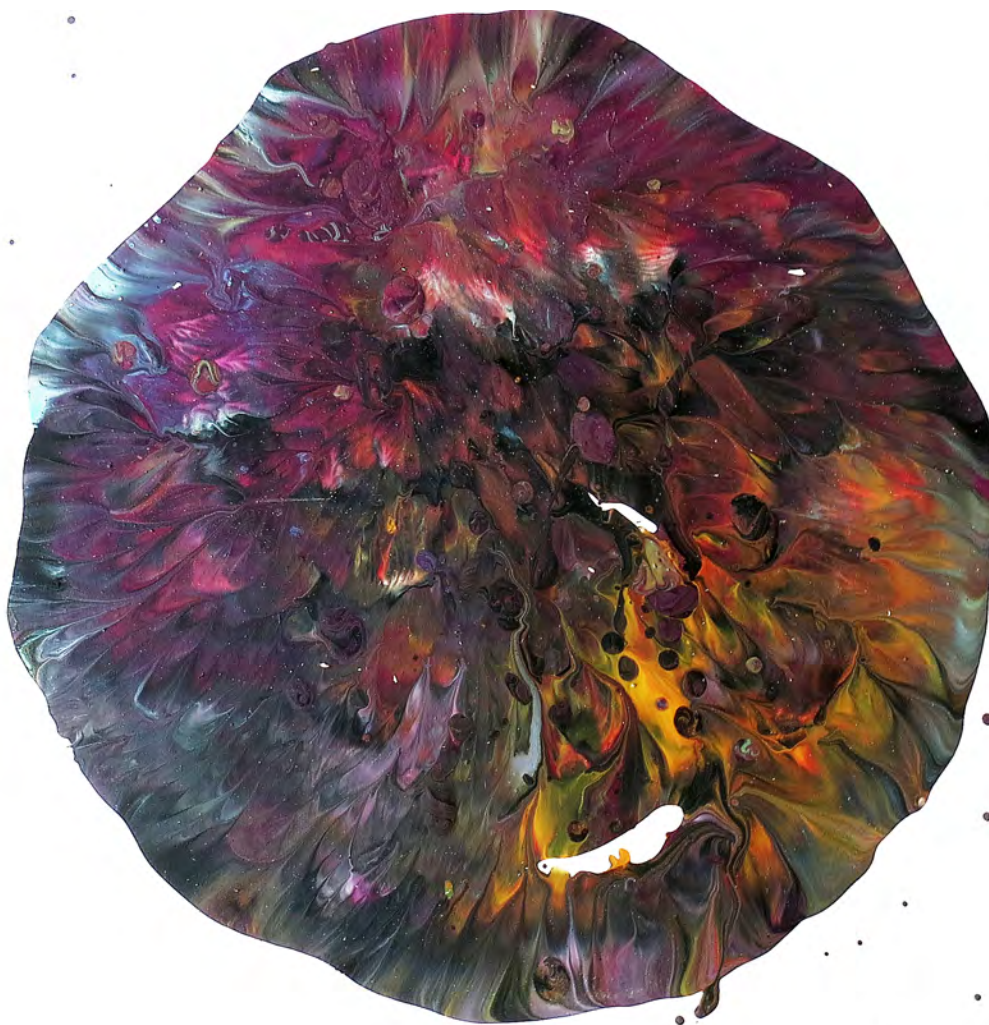
Mono-print 2016_05_22_04, 2016, latex on expanded pvc, 8 x 10 inches



Mono-print 2016_05_22_05, 2016, latex on expanded pvc, 8 x 10 inches



Mono-print 2016_05_22_06, 2016, latex on expanded pvc, 8 x 10 inches



Mono-print 2016_05_22_07, 2016, latex on expanded pvc, 8 x 10 inches



Mono-print 2016_05_22_08, 2016, latex on expanded pvc, 10 x 8 inches



Mono-print 2016_05_22_09, 2016, latex on expanded pvc, 8 x 10 inches



Mono-print 2016_05_22_10, 2016, latex on expanded pvc, 8 x 10 inches



Mono-print 2016_05_22_11, 2016, latex on expanded pvc, 10 x 8 inches



Mono-print 2016_05_22_12, 2016, latex on expanded pvc, 10 x 8 inches



Mono-print 2016_05_22_13, 2016, latex on expanded pvc, 10 x 8 inches



Mono-print 2016_05_22_14, 2016, latex on expanded pvc, 10 x 8 inches



Mono-print 2016_05_22_15, 2016, latex on expanded pvc, 10 x 8 inches



Paula Schmidt



David B. Schmidt



Cluffalo: Winter 2016 Tenth State, 2016, latex on expanded pvc, 32 x 44 inches



Mono-print 2016_06_03_01, 2016, latex on expanded pvc, 8 x 10 inches



Mono-print 2016_06_03_02, 2016, latex on expanded pvc, 10 x 8 inches



Mono-print 2016_06_03_03, 2016, latex on expanded pvc, 10 x 8 inches



Mono-print 2016_06_03_04, 2016, latex on expanded pvc, 10 x 8 inches



Mono-print 2016_06_03_05, 2016, latex on expanded pvc, 10 x 8 inches



Mahesh Desponde



Cluffalo: Spring 2016 Eleventh State, 2016, latex on expanded pvc, 32 x 44 inches



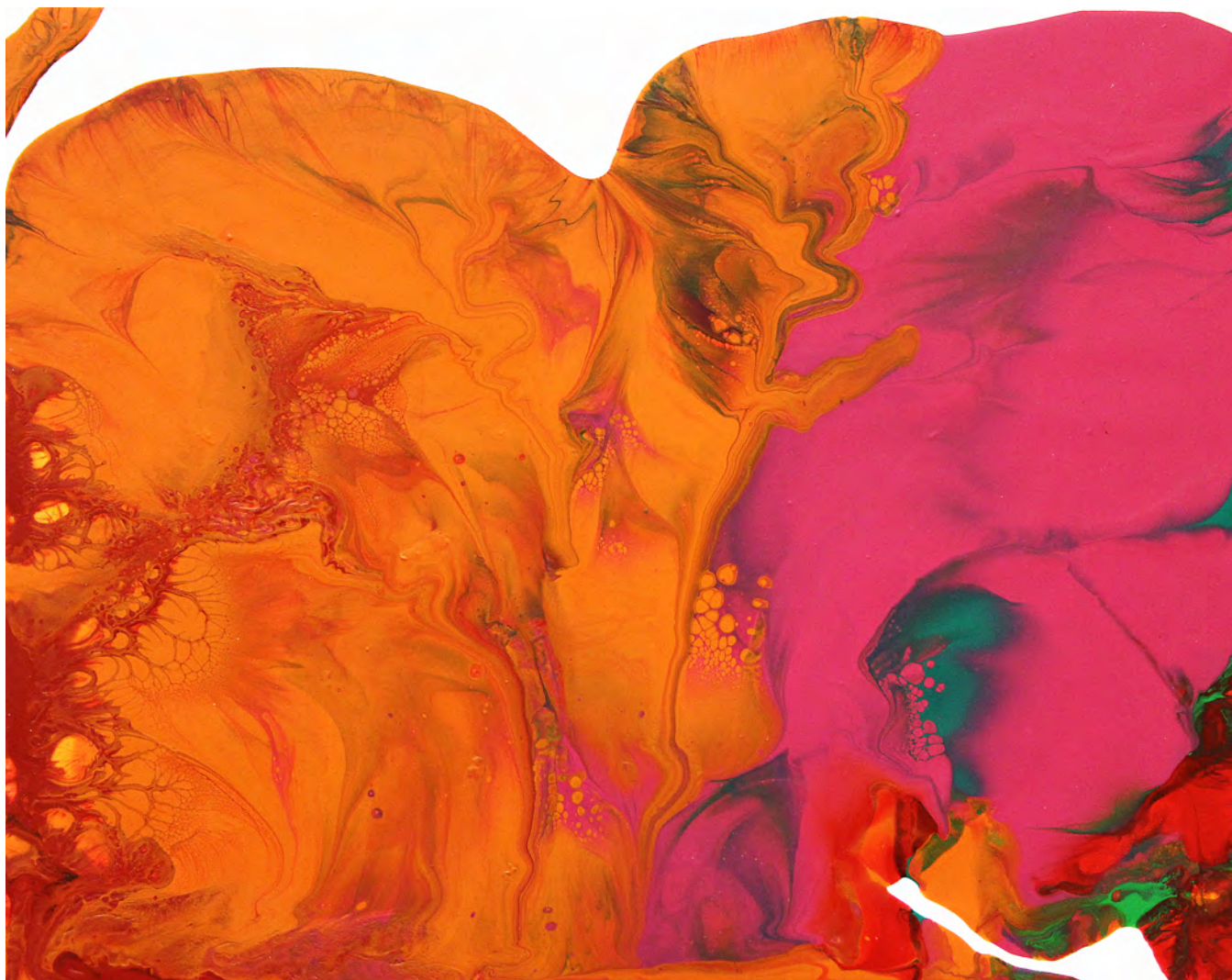
Mono-print 2016_06_05_01, 2016, latex on expanded pvc, 20 x 30 inches



Yvonne Stoklosa



Cluffalo: Spring 2016 Twelfth State, 2016, latex on expanded pvc, 32 x 44 inches



Mono-print 2016_06_06_01, 2016, latex on expanded pvc, 8 x 10 inches



Dianne Riordan



Linda Drajem



Marguerite Collesano



Marjorie Norris



Mary Callahan



Mary Herbst



Pat McClain



Patricia LaFalce



Phyllis Galie



Cluffalo: Spring 2016 Thirteenth State, 2016, latex on expanded pvc, 32 x 44 inches



Mono-print 2016_06_10_01Drajem, 2016, latex on expanded pvc, 8 x 10 inches



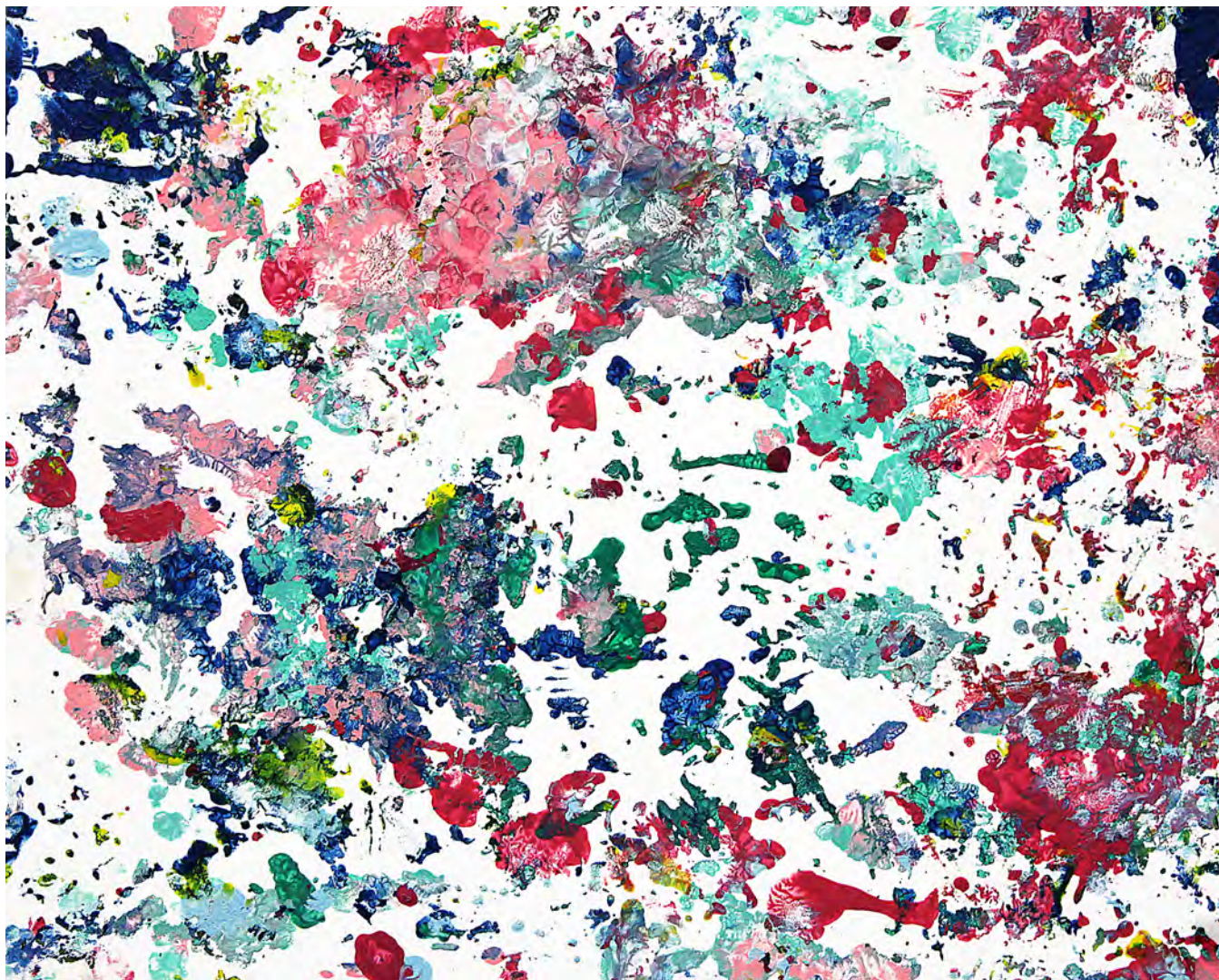
Mono-print 2016_06_10_02 Norris, 2016, latex on expanded pvc, 8 x 10 inches



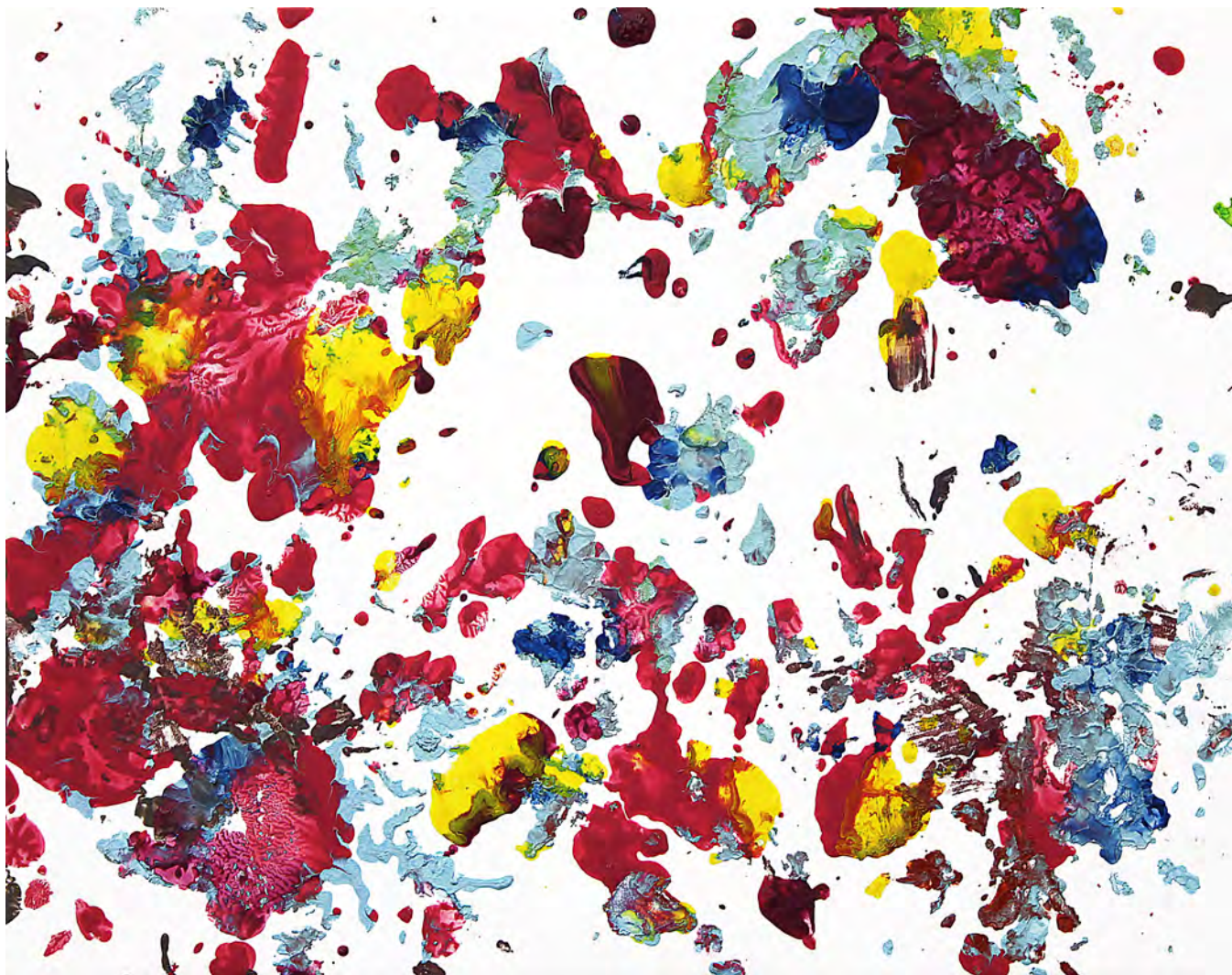
Mono-print 2016_06_10_03Herbst, 2016, latex on expanded pvc, 8 x 10 inches



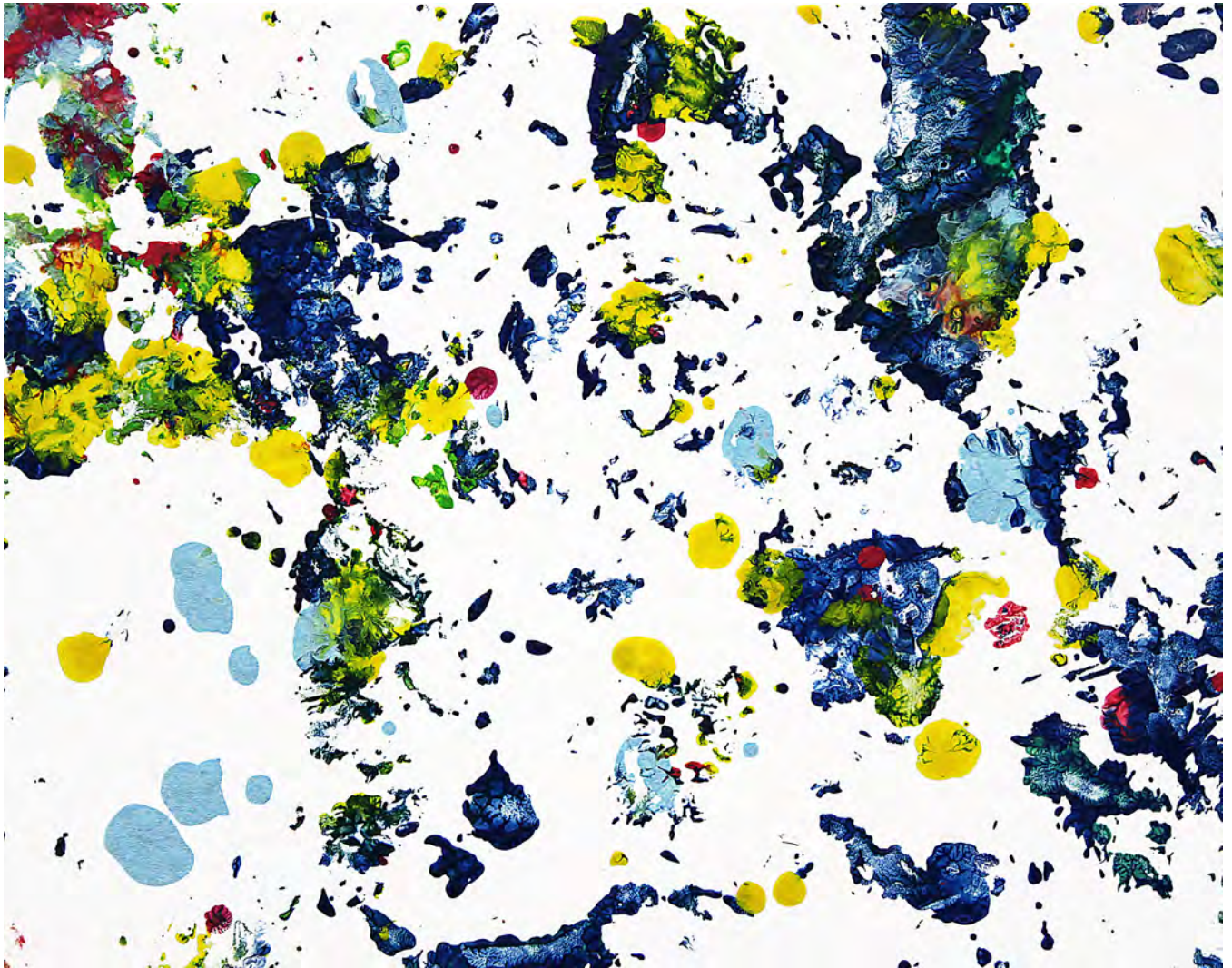
Mono-print 2016_06_10_04 Callahan, 2016, latex on expanded pvc, 8 x 10 inches



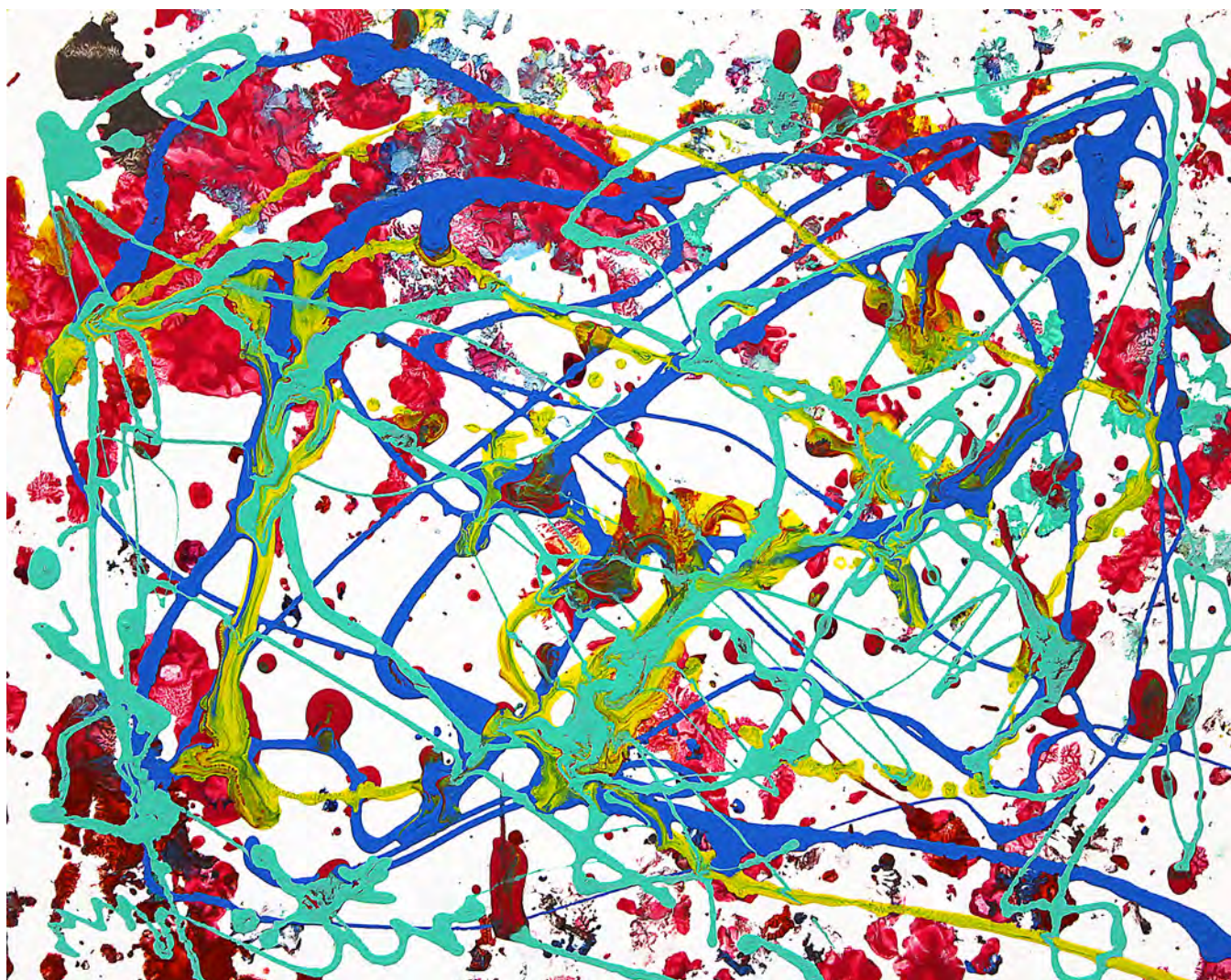
*Mono-print 2016_06_10_05*Riordan, 2016, latex on expanded pvc, 8 x 10 inches



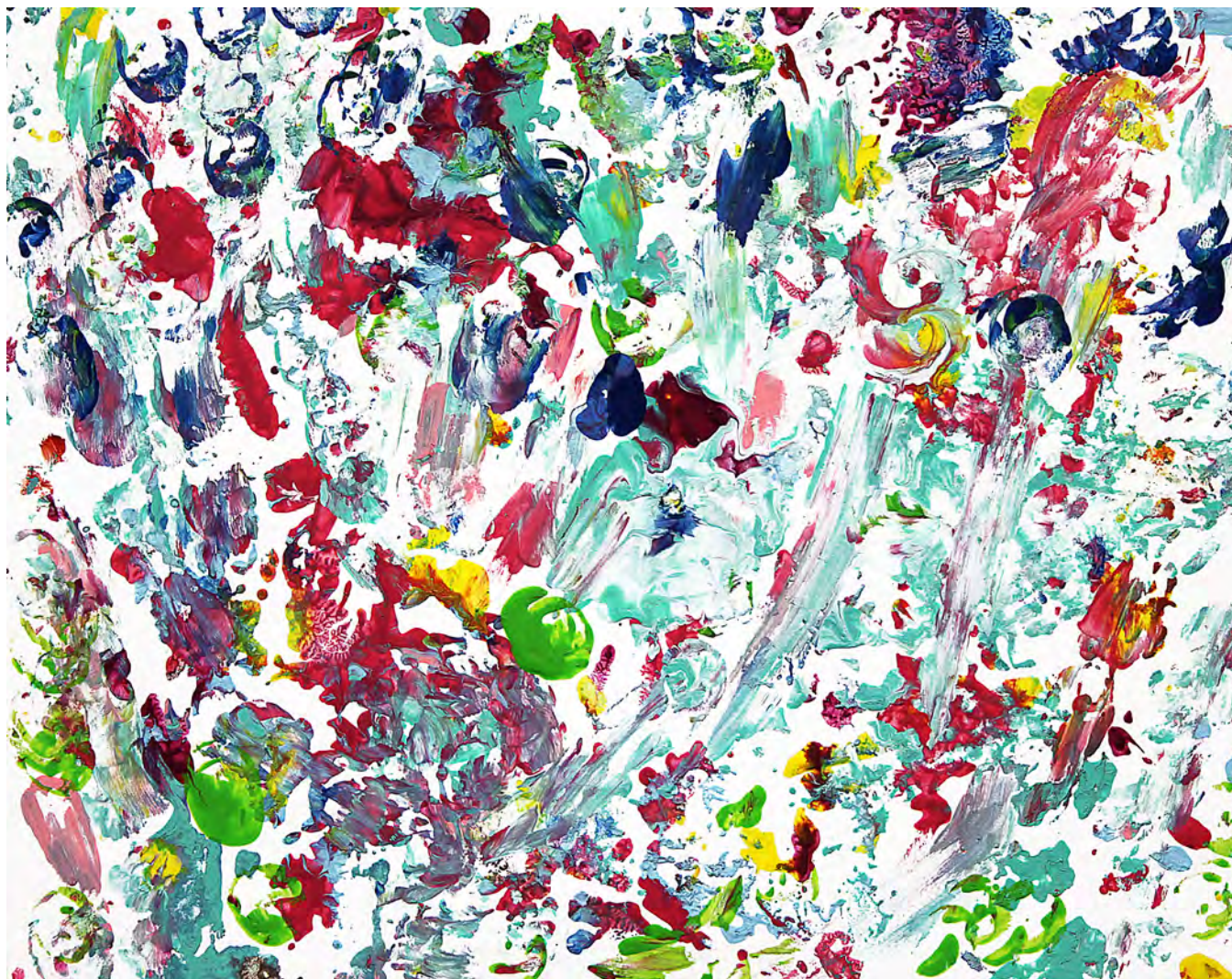
Mono-print 2016_06_10_06LaFalce, 2016, latex on expanded pvc, 8 x 10 inches



Mono-print 2016_06_10_07McCain, 2016, latex on expanded pvc, 8 x 10 inches



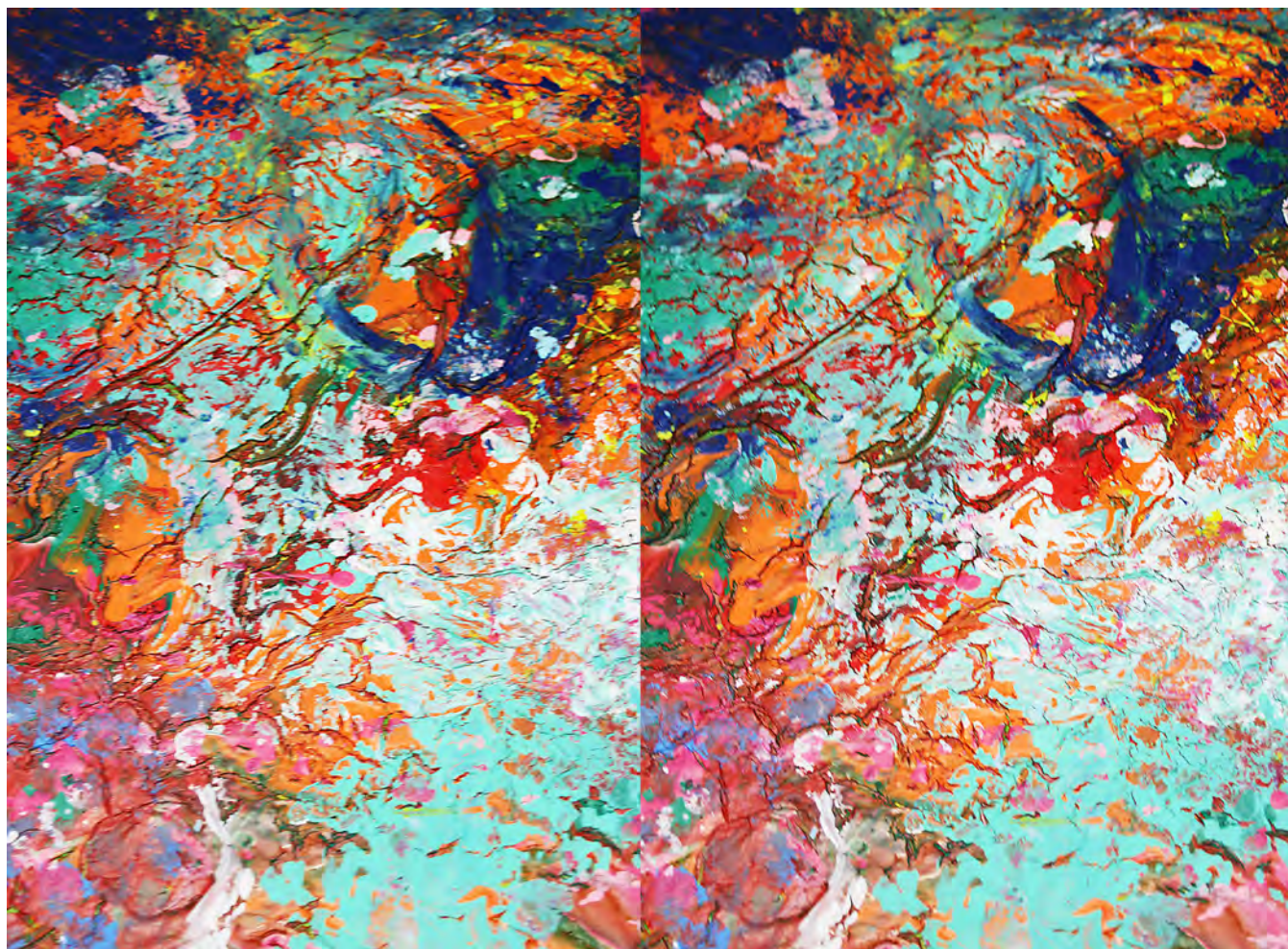
Mono-print 2016_06_10_08Galie, 2016, latex on expanded pvc, 8 x 10 inches



Mono-print 2016_06_10_09Collesano, 2016, latex on expanded pvc, 8 x 10 inches



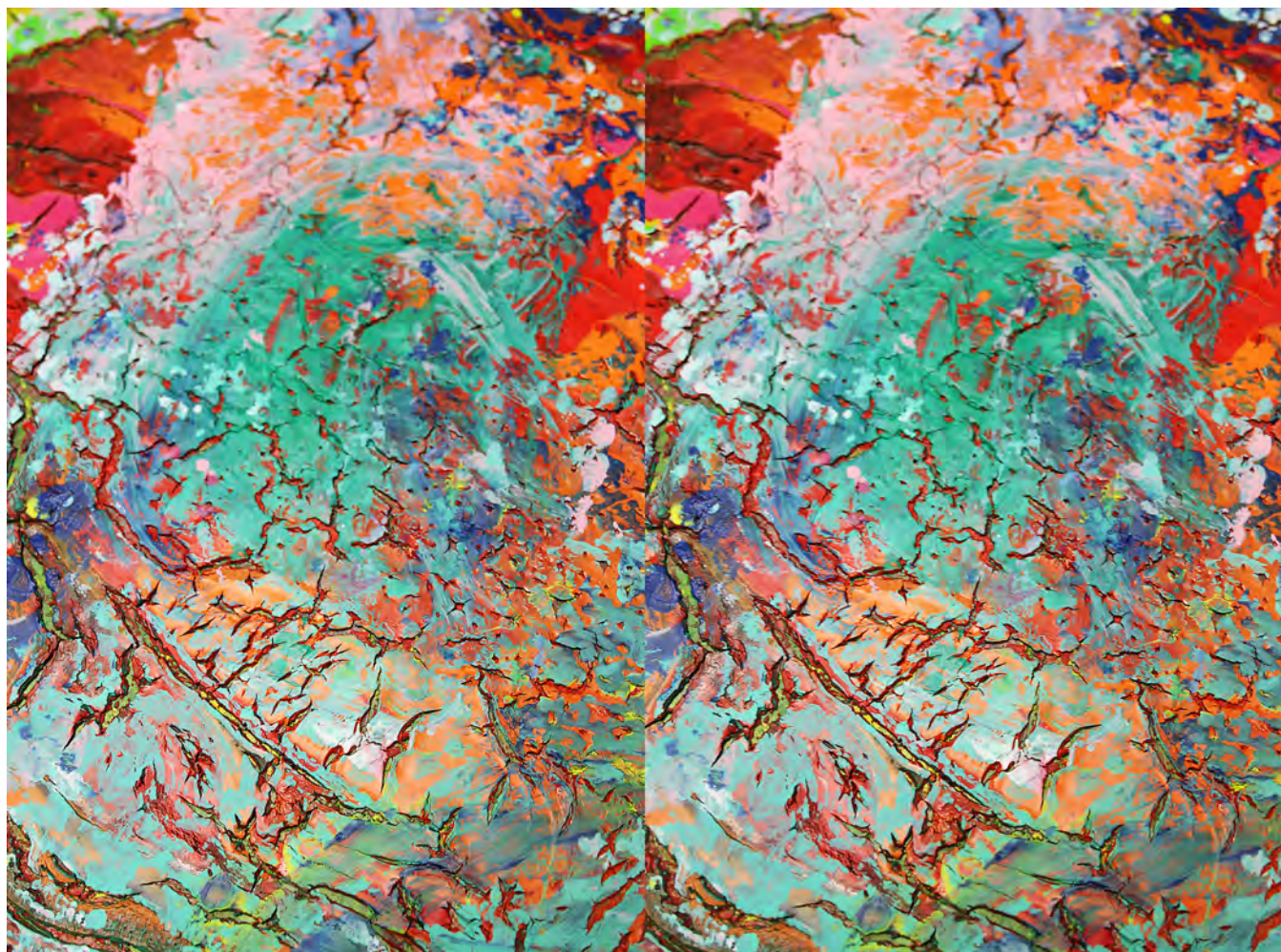
Stereo 2016_06_10_10, 2016, jpeg file



Stereo 2016_06_10_11, 2016, jpeg file



Stereo 2016_06_10_12, 2016, jpeg file



Stereo 2016_06_10_13, 2016, jpeg file



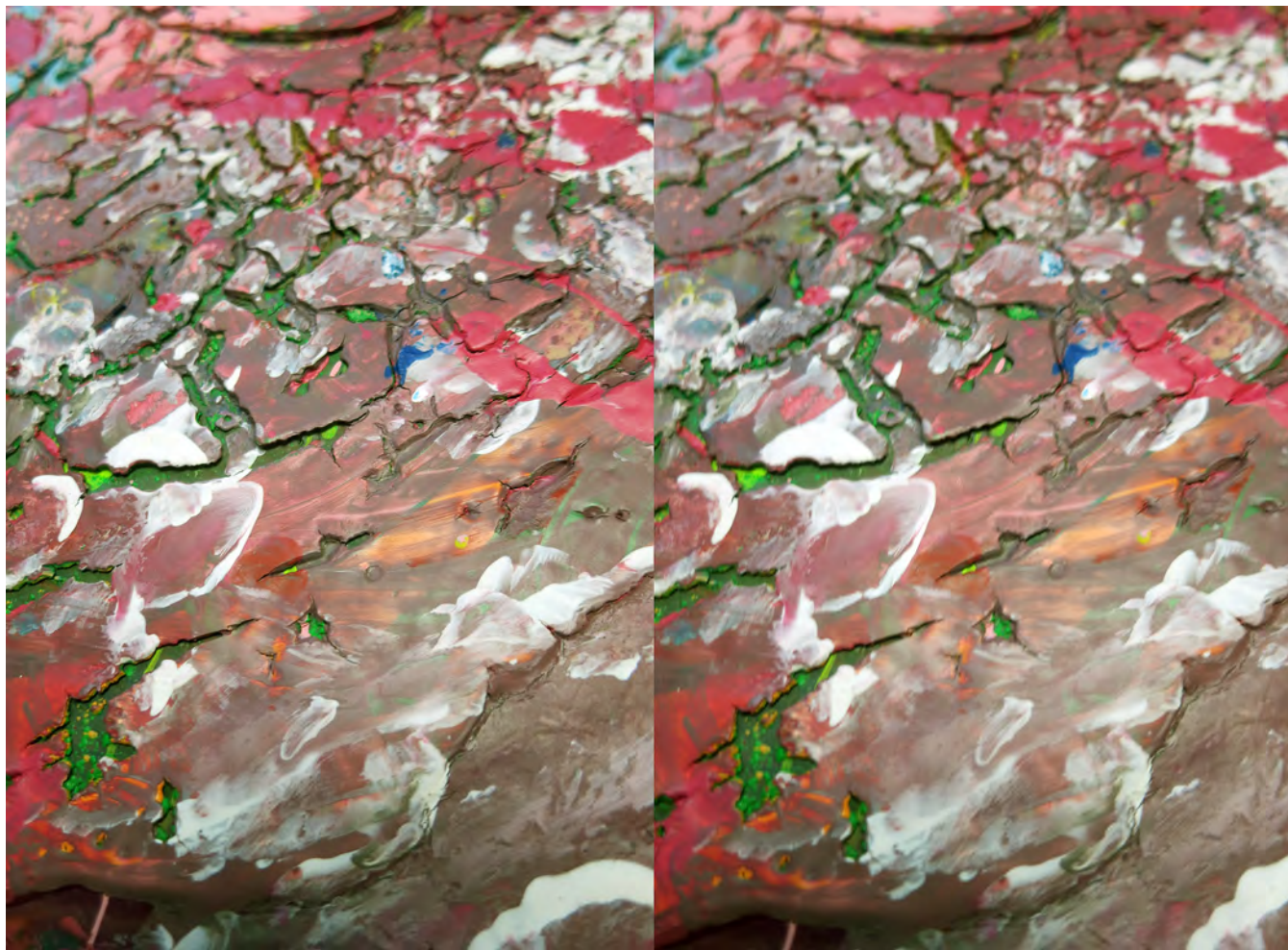
Stereo 2016_06_10_14, 2016, jpeg file



Stereo 2016_06_10_15, 2016, jpeg file



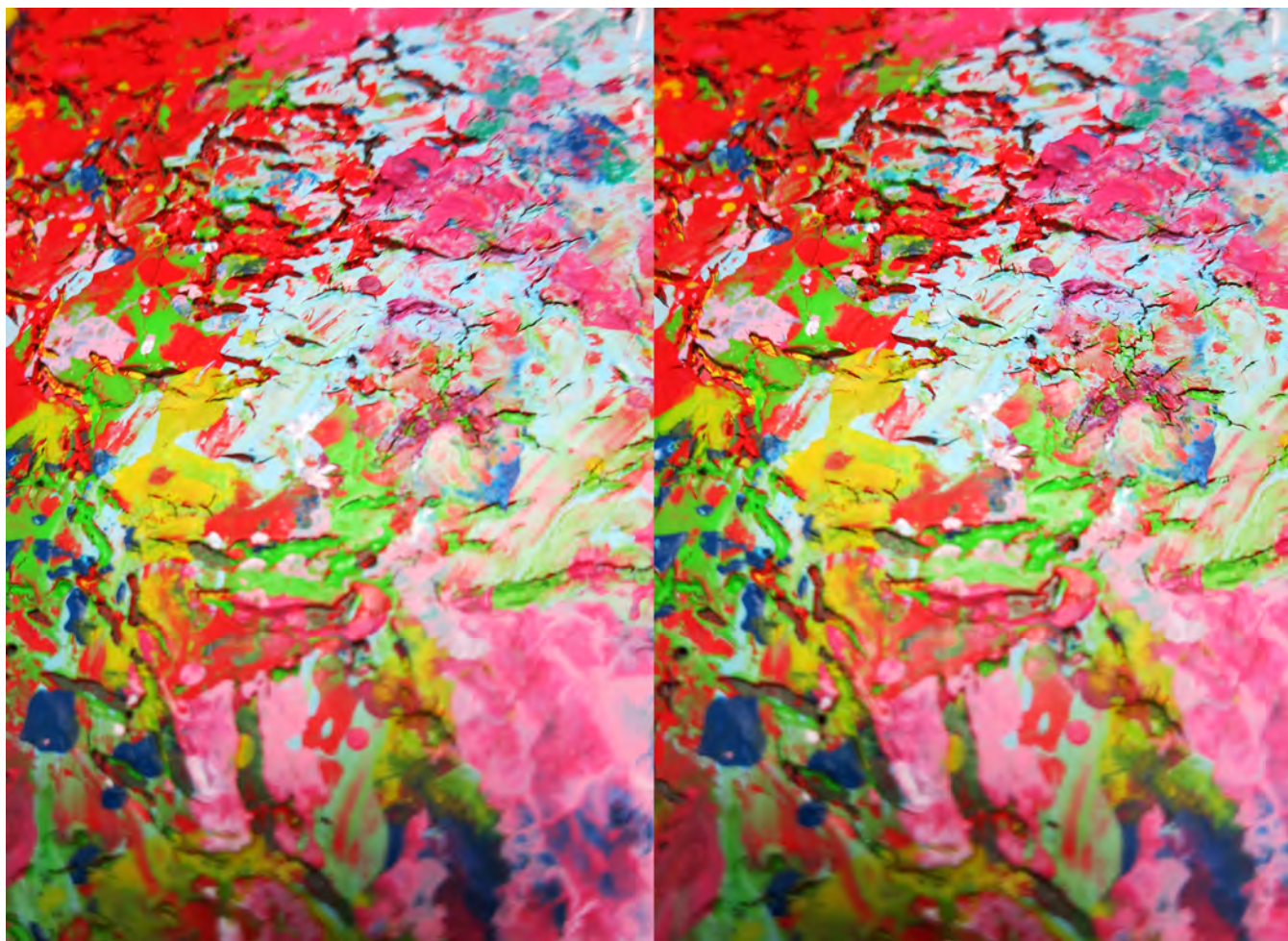
Stereo 2016_06_10_16, 2016, jpeg file



Stereo 2016_06_10_17, 2016, jpeg file



Stereo 2016_06_10_18, 2016, jpeg file



Stereo 2016_06_10_19, 2016, jpeg file



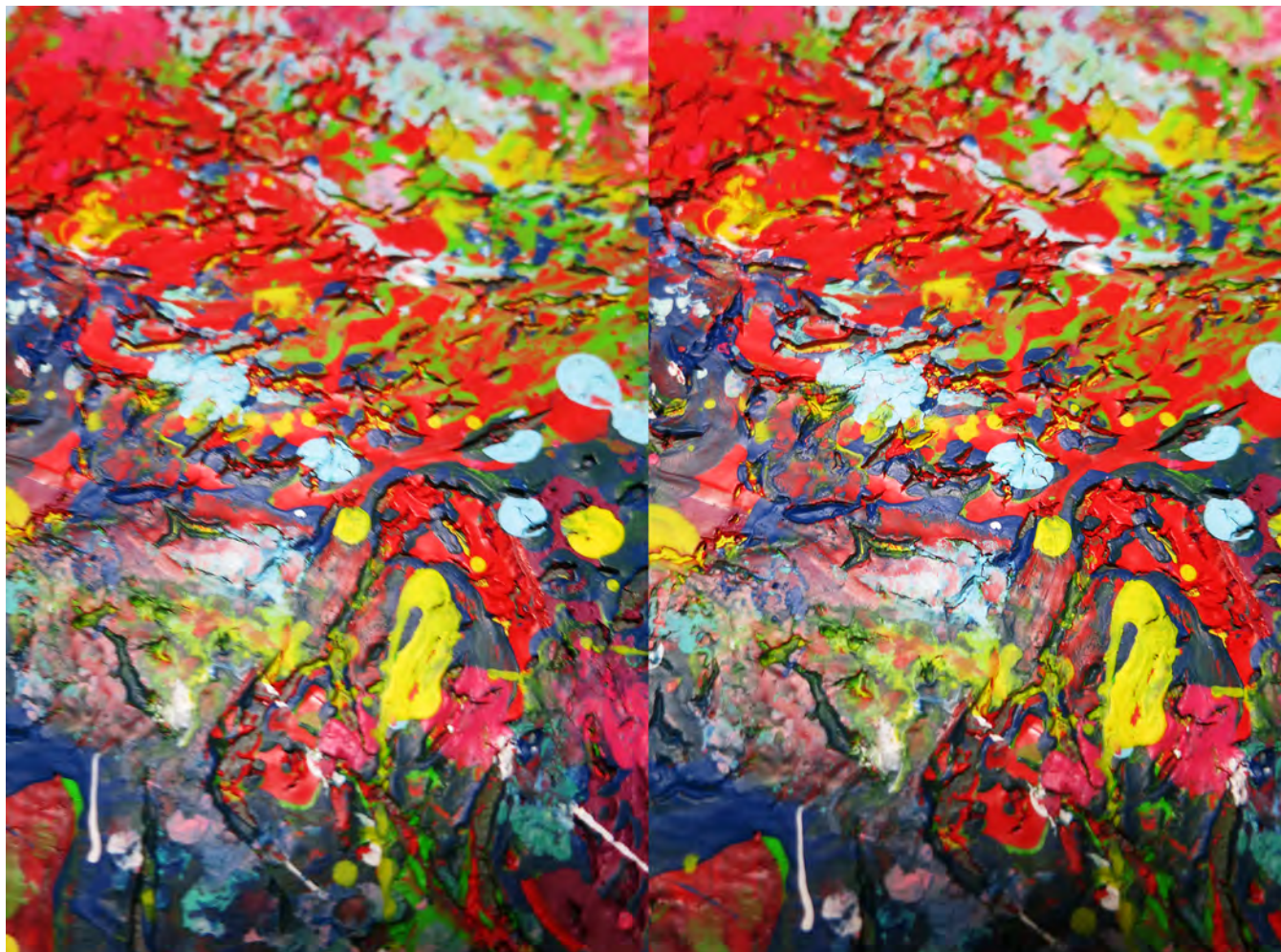
Stereo 2016_06_10_20, 2016, jpeg file



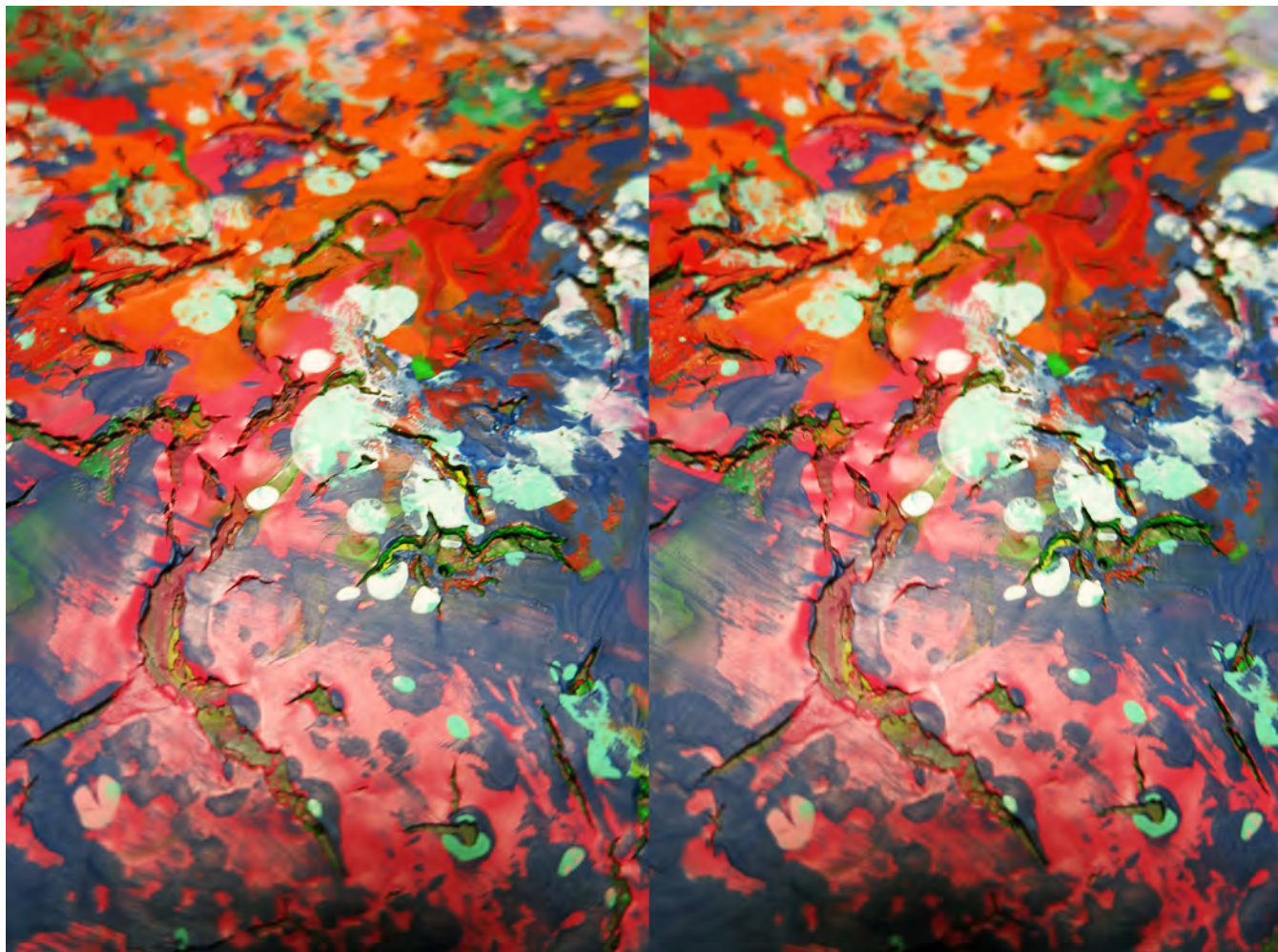
Stereo 2016_06_10_20, 2016, jpeg file



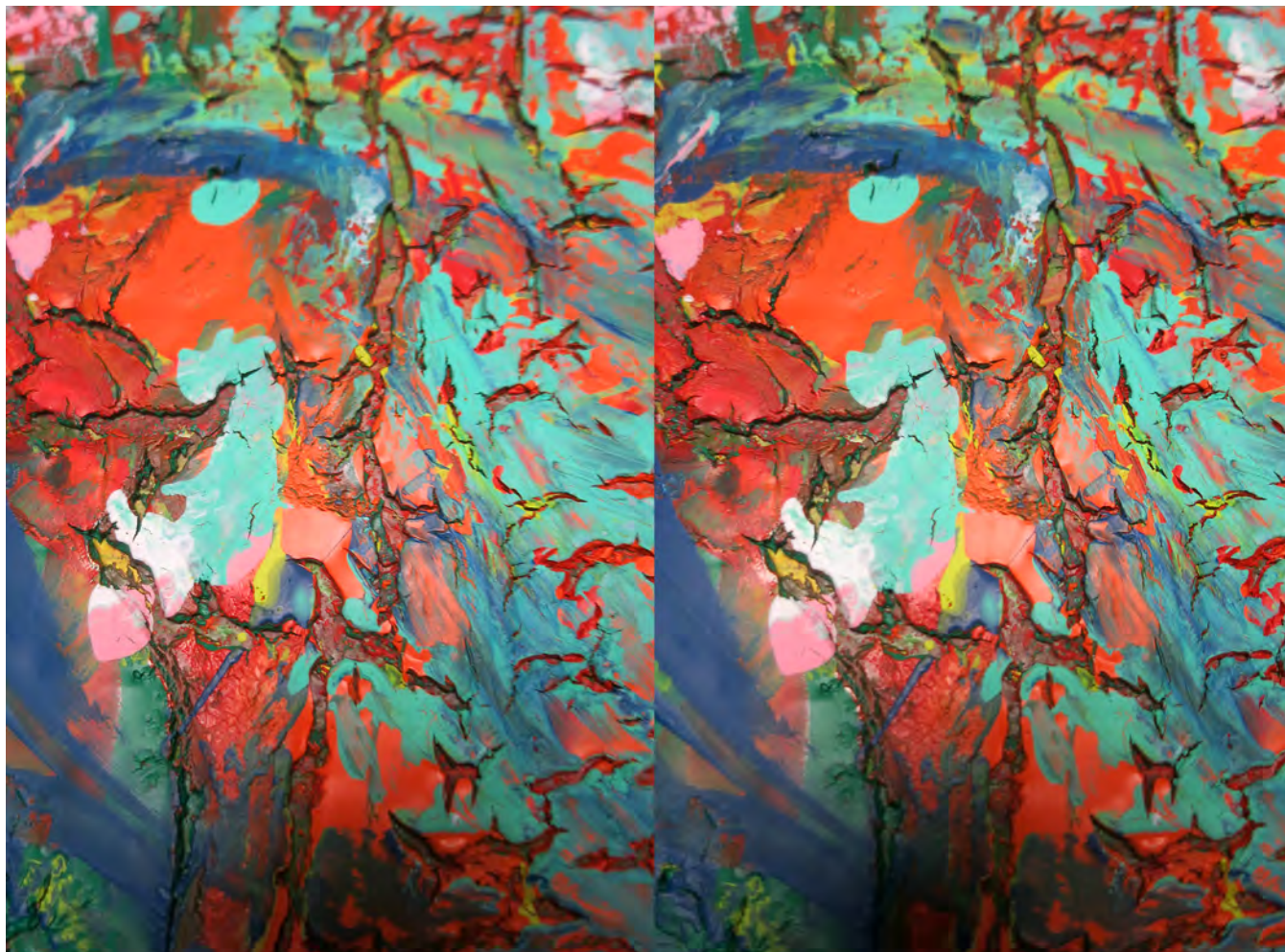
Stereo 2016_06_10_22, 2016, jpeg file



Stereo 2016_06_10_23, 2016, jpeg file



Stereo 2016_06_10_24, 2016, jpeg file



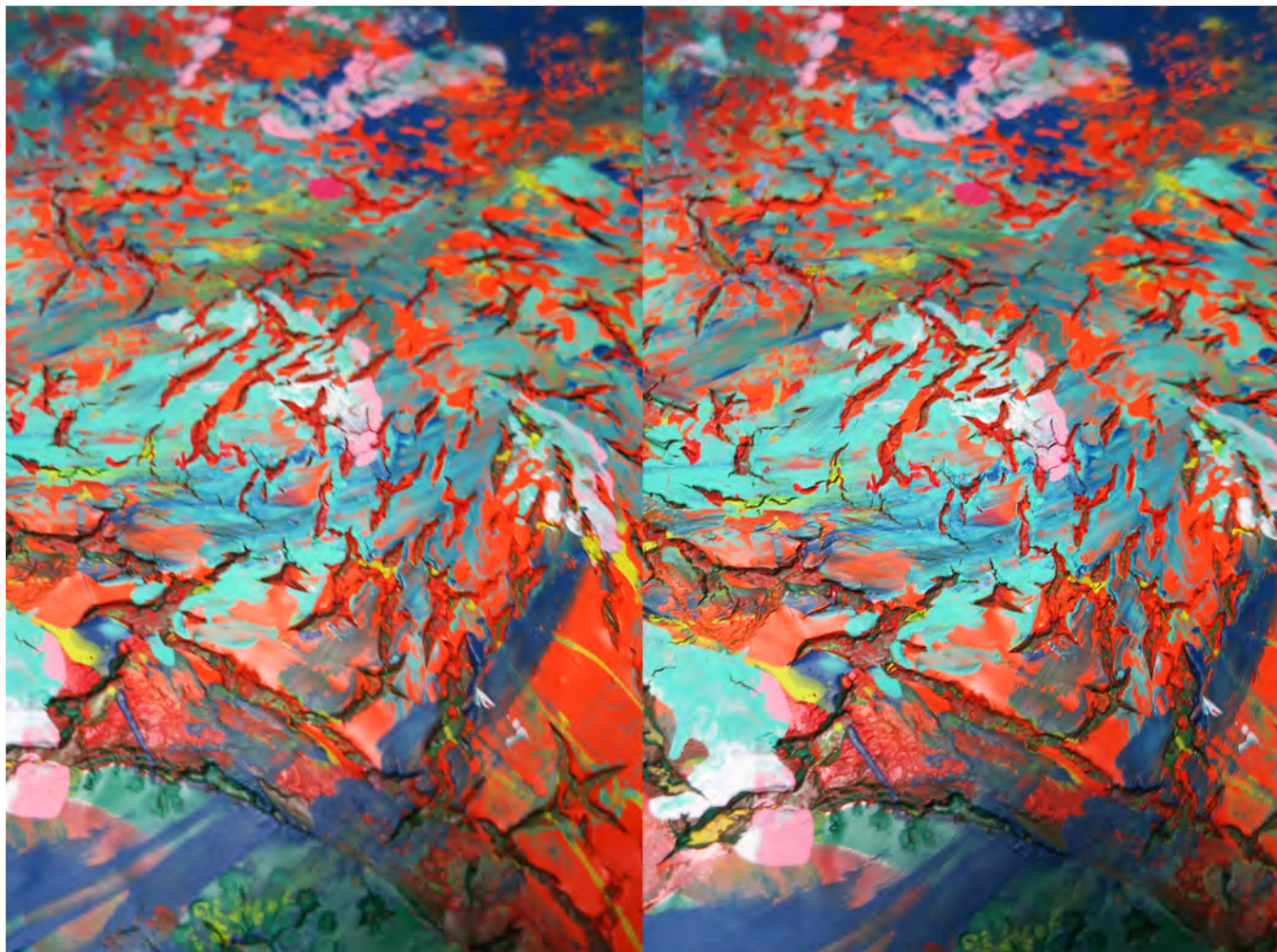
Stereo 2016_06_10_25, 2016, jpeg file



Stereo 2016_06_10_26, 2016, jpeg file



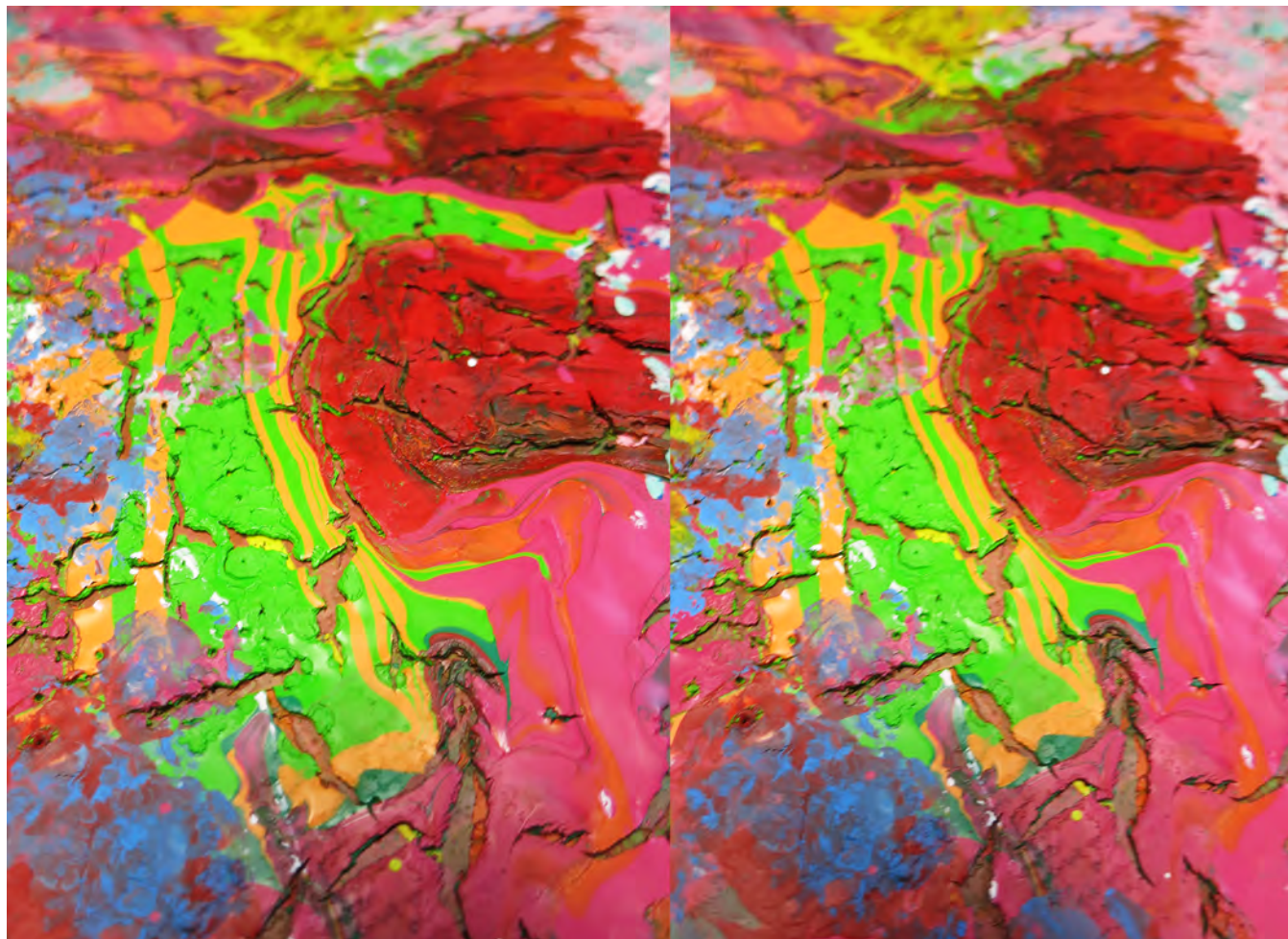
Stereo 2016_06_10_27, 2016, jpeg file



Stereo 2016_06_10_28, 2016, jpeg file



Stereo 2016_06_10_29, 2016, jpeg file



Stereo 2016_06_10_30, 2016, jpeg file



Lydia Freier



Audrey Parker



Kathy Parker



Cluffalo: Spring 2016 Fourteenth State, 2016, latex on expanded pvc, 32 x 44 inches



Lydia Freier



Audrey Parker and Lydia Freier



Audrey Parker



Mono-print 2016_06_16_01 Freier, 2016, latex on expanded pvc, 8 x 10 inches



Renee Carlson



Kaylee Vawter



Mia Lucero



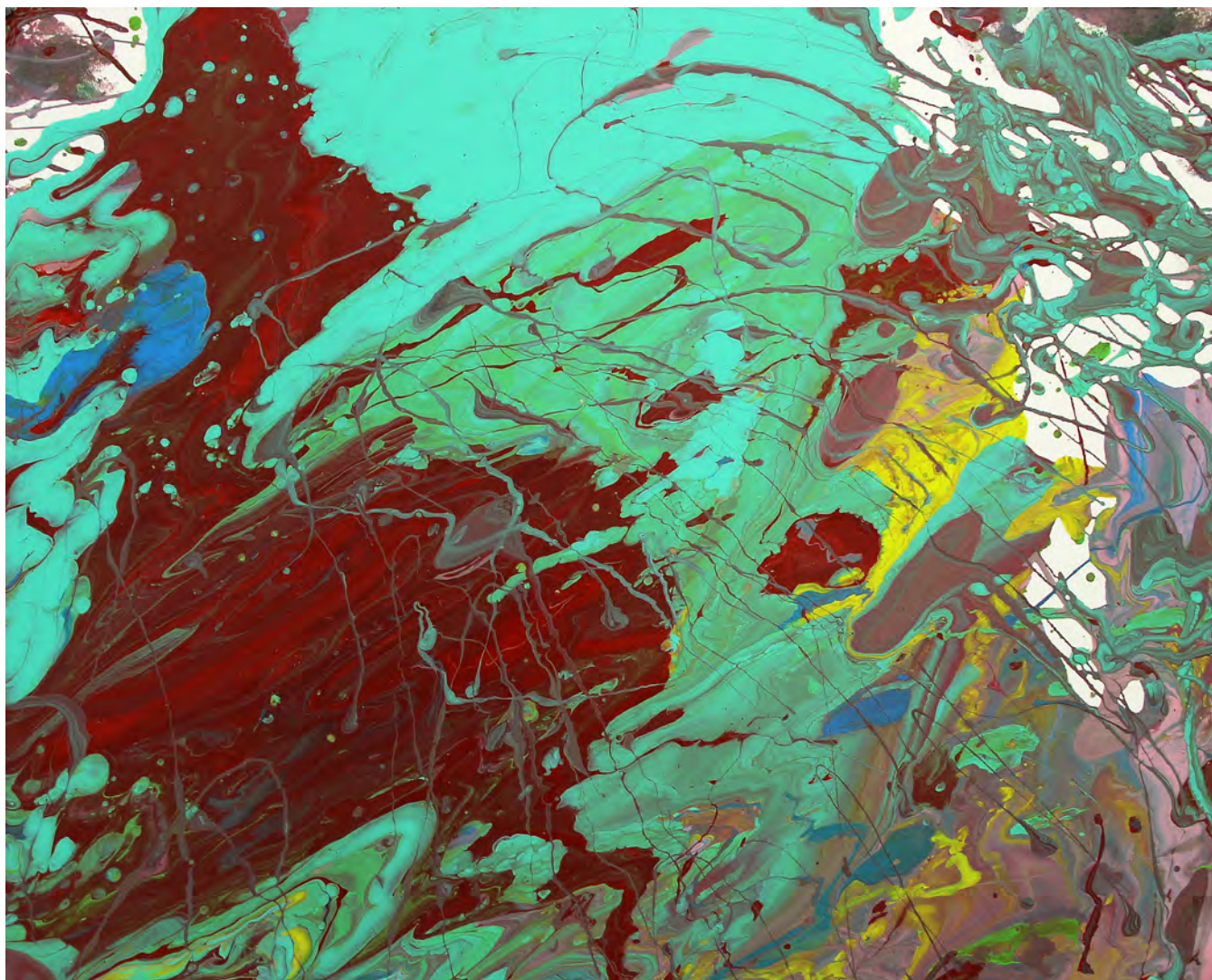
Megan Vawter



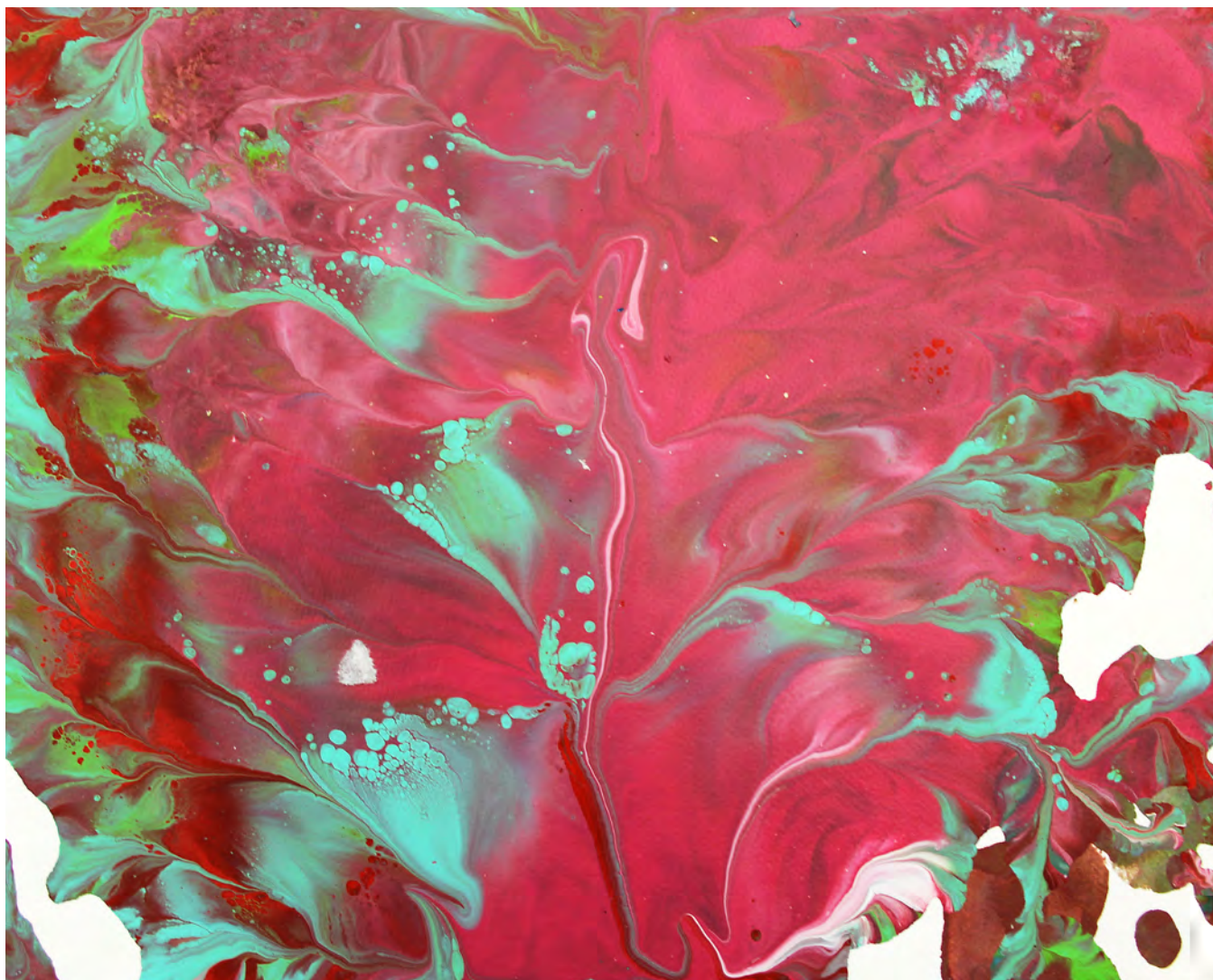
Jessie Parker



Cluffalo: Spring 2016 Fifteenth State, 2016, latex on expanded pvc, 32 x 44 inches



Mono-print 2016_06_17_01 Lucero, 2016, latex on expanded pvc, 8 x 10 inches



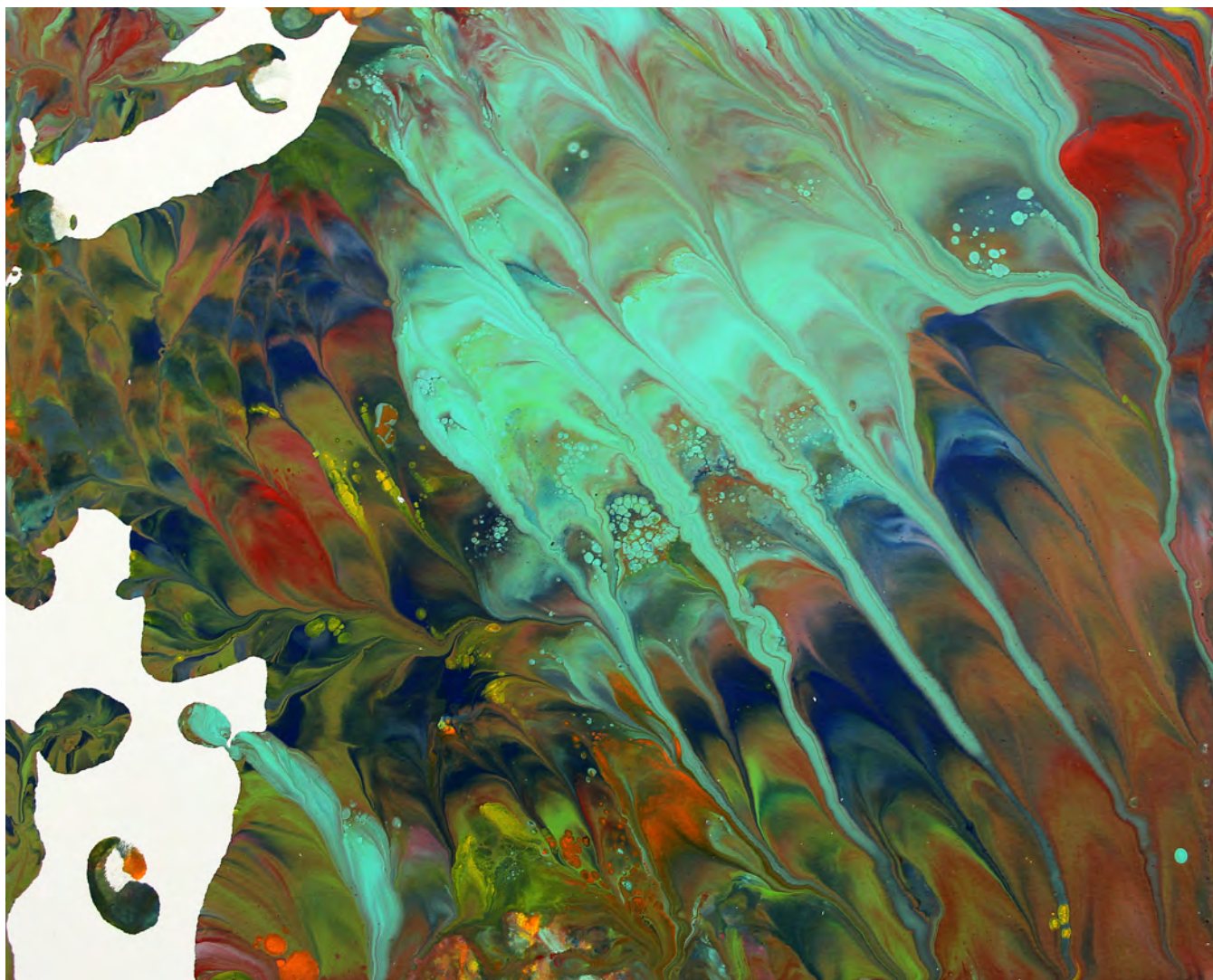
Mono-print 2016_06_17_02KVawter, 2016, latex on expanded pvc, 8 x 10 inches



Mono-print 2016_06_17_03 Carlson, 2016, latex on expanded pvc, 8 x 10 inches



Mono-print 2016_06_17_04MVawter, 2016, latex on expanded pvc, 8 x 10 inches



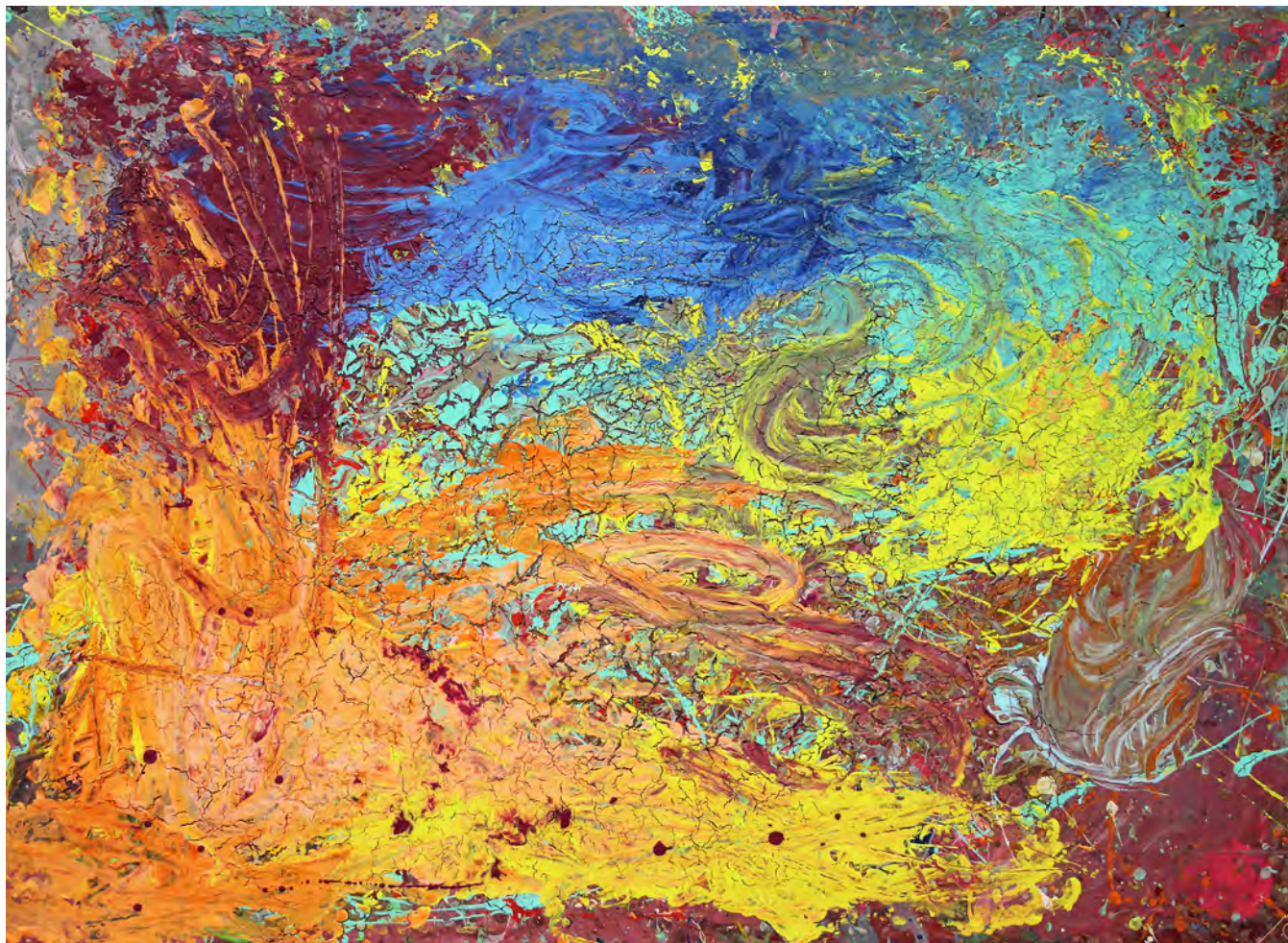
Mono-print 2016_06_17_05, 2016, latex on expanded pvc, 8 x 10 inches



Sally Hezel



Christiana Smith Hays



Cluffalo Spring 2016 Sixteenth State, 2016, latex on expanded pvc, 32 x 44 inches



Mono-print 2016_06_18_01 Hays, 2016, latex on expanded pvc, 8 x 10 inches



Cluffalo Spring 2016 Seventeenth State, 2016, latex on expanded pvc, 32 x 44 inches



Cluffalo Spring 2016 Eighteenth State, 2016, latex on expanded pvc, 32 x 44 inches



Clufffalo Spring 2016 Nineteenth State, 2016, latex on expanded pvc, 32 x 44 inches



Cluffalo Spring 2016, 2016, latex on expanded pvc, 32 x 44 inches