



CHARLES CLOUGH
CLUFFFALO: SPRING 2017

I established the Clufffalo Institute in 2012 to manage my archive
and collection and to promote and administer the Clufffalo Painting
Workshop at the Roycroft in East Aurora, New York.

Clufffalo: Spring 2017
has been supported by the
John Simon Guggenheim Memorial Foundation.
Here are the painters, states of the painting and mono-print take-aways made in
The Print Shop at The Roycroft in the Spring of 2017.
ISBN: 978-1-387-08900-0
© Charles Clough 2017

Cover: *Clufffalo: Spring 2017*, 2017, latex on expanded pvc, 32 x 44 inches

There are three kinds of Clufffaloes: Seasons, made by all who wish to participate, only at the Roycroft in East Aurora, New York; Places, such as Clufffalo: Hamburg commissioned by the Albright-Knox Art Gallery and Erie County PublicArt initiative, painted by 150 participants and hanging in the Hamburg, New York Public Library; and Numbers, painted by me alone.

The Clufffalo Painting Workshop at the Roycroft began on September 21st, 2015. Since then, and including the subject of this book, seven Seasons paintings have been completed by 288 participants in 124 sessions.

I provide the space of the workshop, tools and materials, my time and encouragement and freedom, such as it is limited by gravity, viscosity and drying time, for the participants to engage the experience. Through the course of each season the layers of paint accrue and the participants paint their take-aways and “be” within a transformative creative moment. At the end of the season I grind and polish the painting, with grits from 40 to 12,000 to finish the painting in a manner that fulfills my aesthetic.

The Workshop is a further development of my “structure of intentionality” (the phrase occurred to me many years ago but only recently, having searched, found a reference to John R. Searle, 1983, “Intentionality”), that I describe as “the photographic epic of a painter as a film or a ghost”. This is intuitively anchored in “the true, the good and the beautiful”.

Most of my aspirations have been realized—in terms of being an artist and participating in extending the family. After more than forty-five years in the field I’ve seen increasing interest in contemporary art accompanied by art that represents a grandiosity that runs counter to my taste. Thus the scale and parameters of production of the Seasons are modest and set in the upstate New York town in which I came to understand myself as an artist.

Time is marked by the hands of the participants. The documentation of the Workshop process is made into books, like this one, as a contribution to art history.

The project includes whoever wants to participate, so please make an appointment to paint and share the news of this cultural experiment. Although only one session can happen per day, the project is always “on”. This book follows a format of the participant(s), their state of Clufffalo: Spring 2017 and then their take-away paintings. A separate publication presents stereo photos of details of the process and is available at www.clufff.com

—Charles Clough, 7/5/2017



Sybil Baumwell



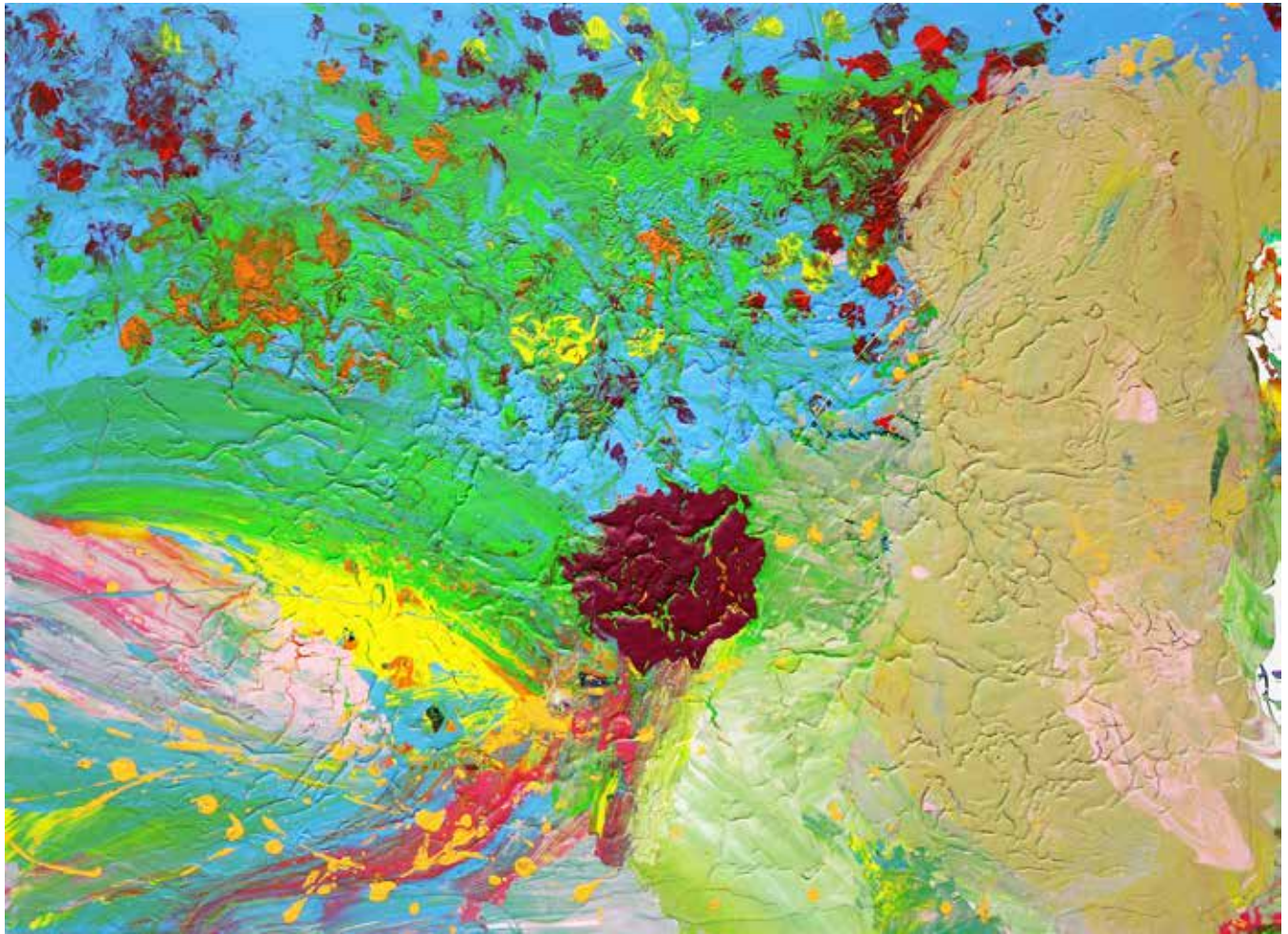
Cluffalo: Spring 2017 First State, 2017, latex on expanded pvc, 32 x 44 inches



2017_03_30_01, 2017, latex on expanded pvc, 10 x 8 inches



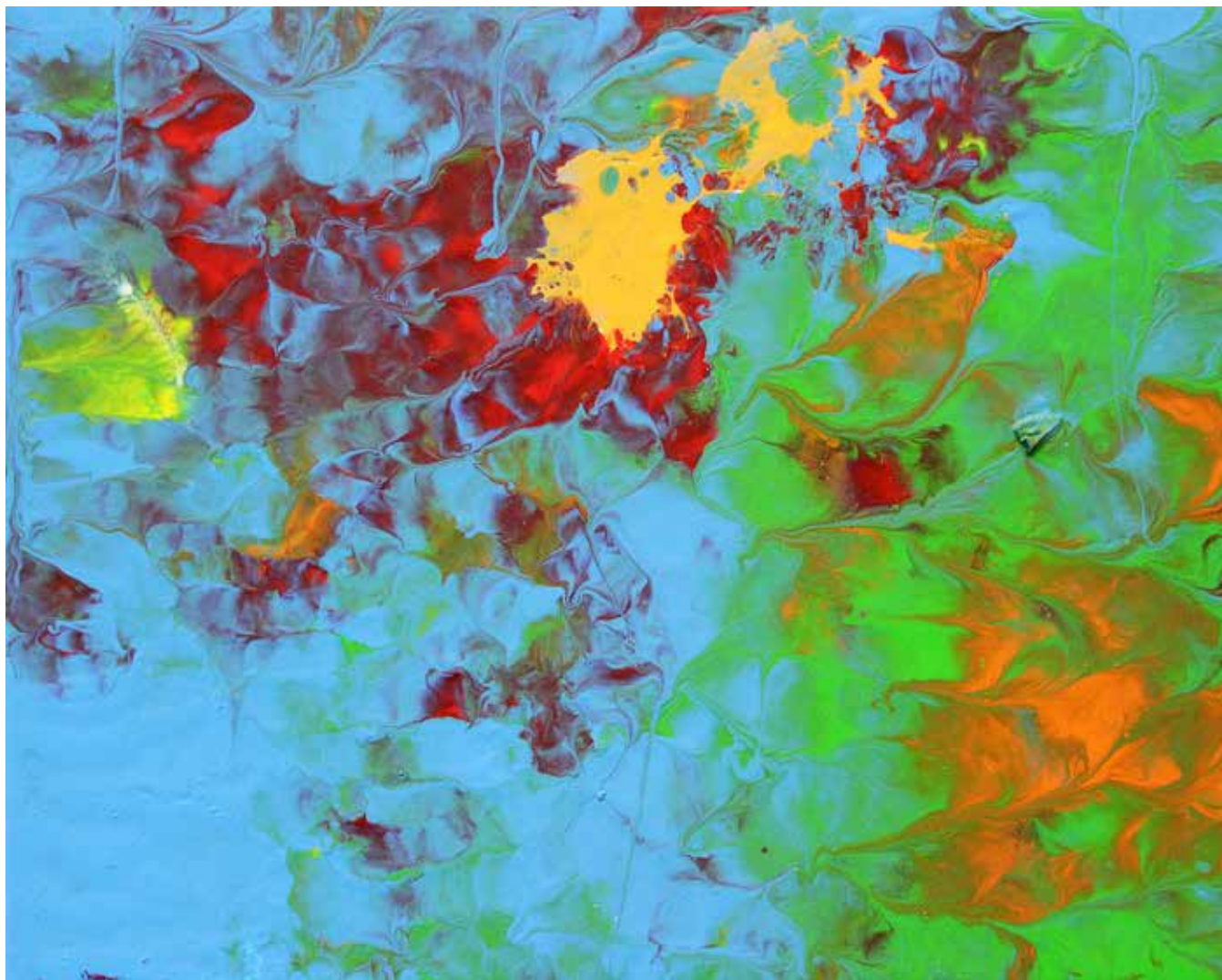
Jill, Sean and Corrine Favata



Cluffalo: Spring 2017 Second State, 2017, latex on expanded pvc, 32 x 44 inches



2017_04_08_01, 2017, latex on expanded pvc, 8 x 10 inches



2017_04_08_02, 2017, latex on expanded pvc, 8 x 10 inches



2017_04_08_03, 2017, latex on expanded pvc, 8 x 10 inches



Tina Dillman



Cluffalo: Spring 2017 Third State, 2017, latex on expanded pvc, 32 x 44 inches



2017_04_10_01, 2017, latex on expanded pvc, 8 x 10 inches



Louis Clough



Vincent Clough



Veronica Clough



Meredith LeVee Clough



Edward Clough



Cluffalo: Spring 2017 Fourth State, 2017, latex on expanded pvc, 32 x 44 inches



2017_04_18_01, 2017, latex on expanded pvc, 8 x 10 inches



2017_04_18_02, 2017, latex on expanded pvc, 8 x 10 inches



2017_04_18_03, 2017, latex on expanded pvc, 8 x 10 inches



2017_04_18_04, 2017, latex on expanded pvc, 10 x 8 inches



2017_04_18_05, 2017, latex on expanded pvc, 10 x 8 inches



Kate Prince



Cluffalo: Spring 2017 Fifth State, 2017, latex on expanded pvc, 32 x 44 inches



2017_04_21_01, 2017, latex on expanded pvc, 10 x 8 inches



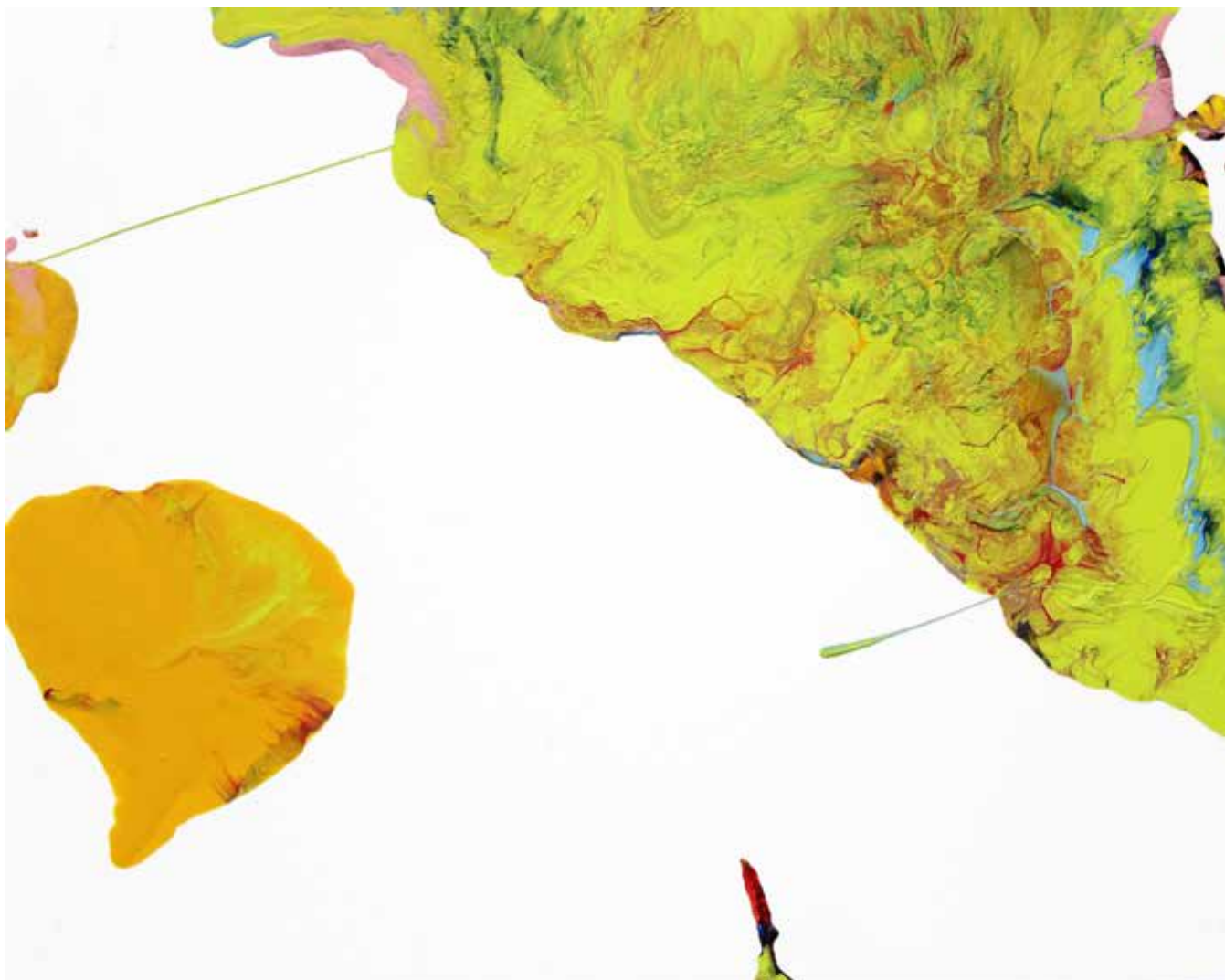
John Massier



Rebecca WIng



Cluffalo: Spring 2017 Sixth State, 2017, latex on expanded pvc, 32 x 44 inches



2017_04_23_01, 2017, latex on expanded pvc, 8 x 10 inches



2017_04_23_02, 2017, latex on expanded pvc, 8 x 10 inches



Yvonne Stoklosa



Cluffalo: Spring 2017 Seventh State, 2017, latex on expanded pvc, 32 x 44 inches, 2017



2017_04_27_01, 2017, latex on expanded pvc, 10 x 8 inches



Christy Hartung



Chan Jing Yee



Jee Wei



Cluffalo: Spring 2017 Eighth State, 2017, latex on expanded pvc, 32 x 44 inches, 2017



2017_05_17_01, 2017, latex on expanded pvc, 10 x 8 inches



2017_05_17_02, 2017, latex on expanded pvc, 8 x 10 inches



2017_05_20_03, 2017, latex on expanded pvc, 10 x 8 inches



Nayana Pratt



Meera Desai



Karen Gifford



John Pratt



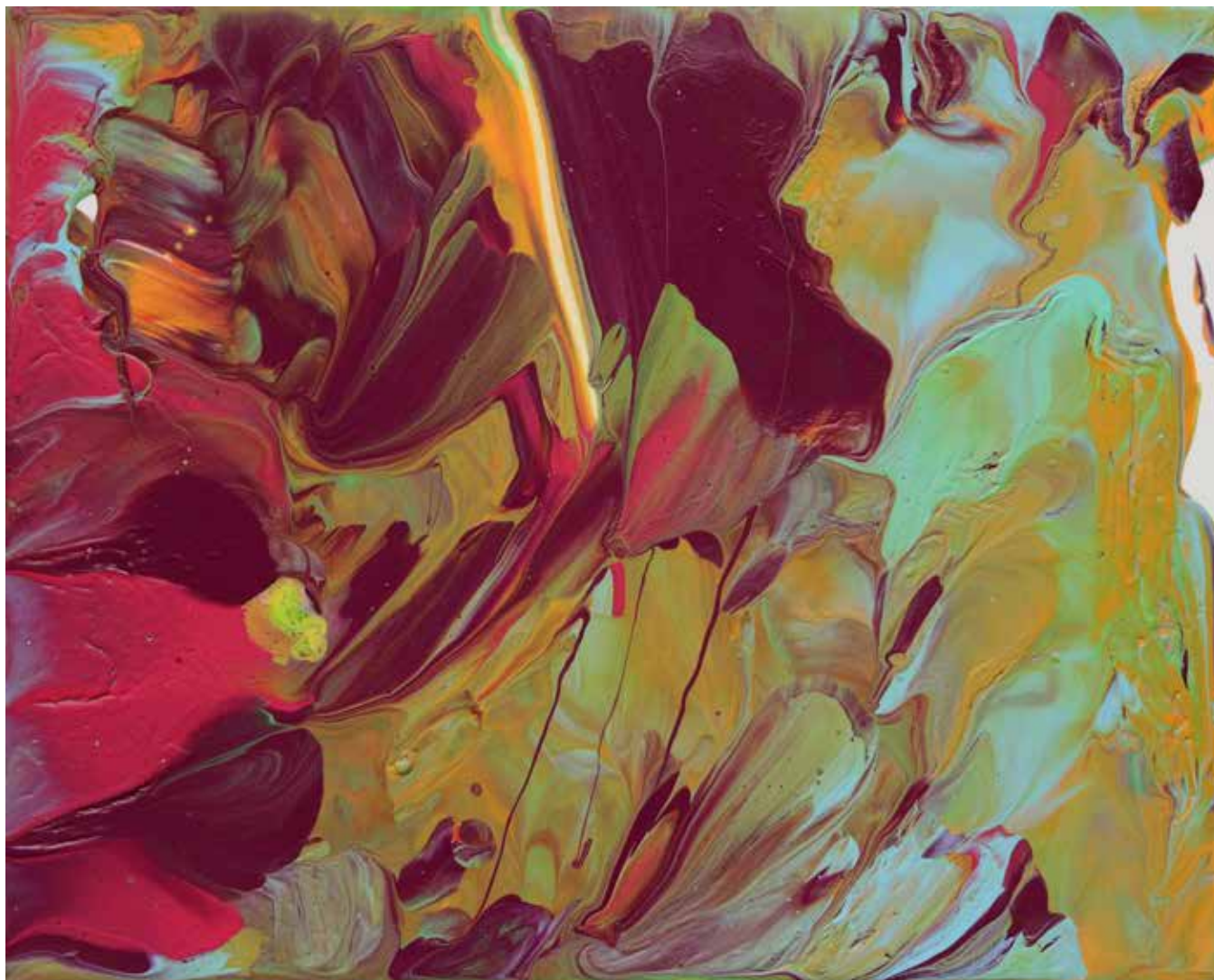
Tammy Pratt



Rajesh Desai



Cluffalo: Spring 2017 Ninth State, 2017, latex on expanded pvc, 32 x 44 inches



2017_05_20_01, 2017, latex on expanded pvc, 8 x 10 inches



2017_05_20_02, 2017, latex on expanded pvc, 10 x 8 inches



2017_05_20_03, 2017, latex on expanded pvc, 10 x 8 inches



2017_05_20_04, 2017, latex on expanded pvc, 10 x 8 inches



2017_05_20_05, 2017, latex on expanded pvc, 10 x 8 inches



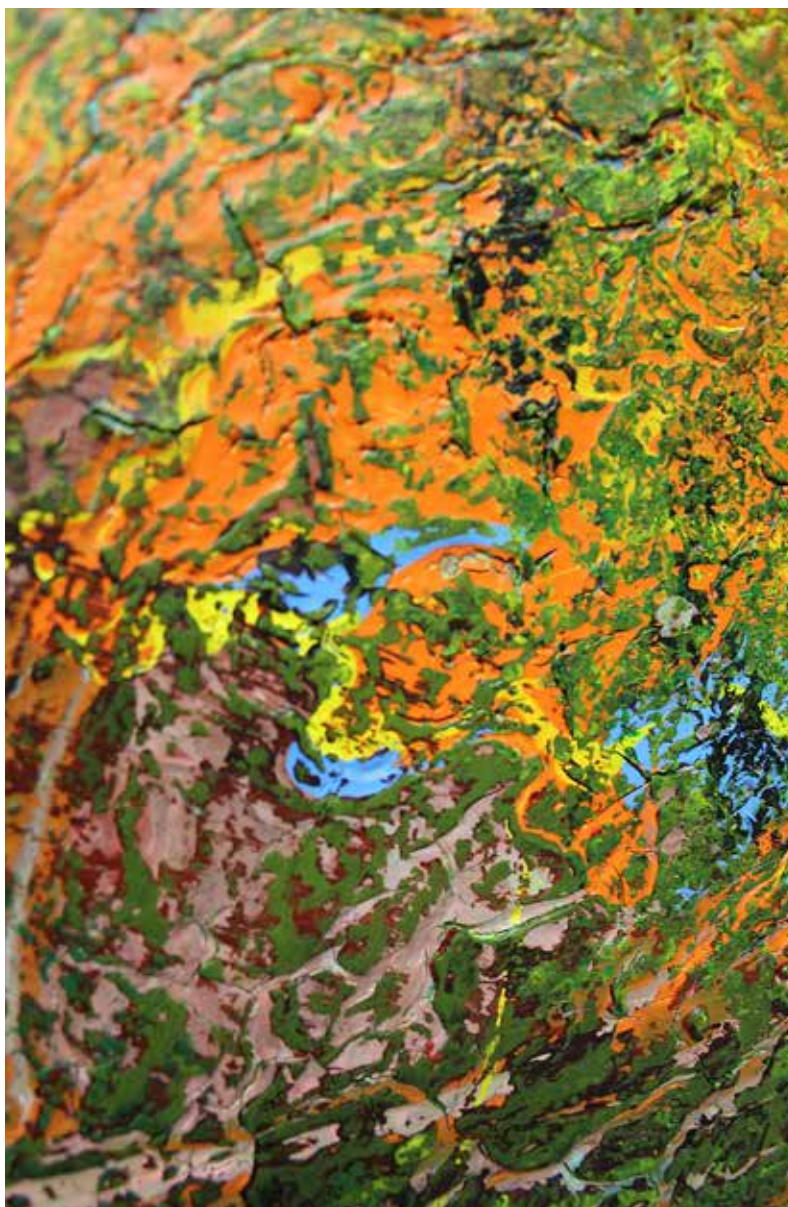
2017_05_20_06, 2017, latex on expanded pvc, 10 x 8 inches, with John Pratt



Rebecca Hyde



Cluffalo: Spring 2017 Tenth State, 2017, latex on expanded pvc, 32 x 44 inches



Cluffalo: Spring 2017 Tenth State (detail), 2017, latex on expanded pvc,



Scott Propeack



Anthony Bannon



Cluffalo: Spring 2017 Eleventh State, 2017, latex on expanded pvc, 32 x 44 inches



2017_05_26_01,, 2017, latex on expanded pvc, 8 x 10 inches



2017_05_26_02, 2017, latex on expanded pvc, 8 x 10 inches



Mila Tunkey



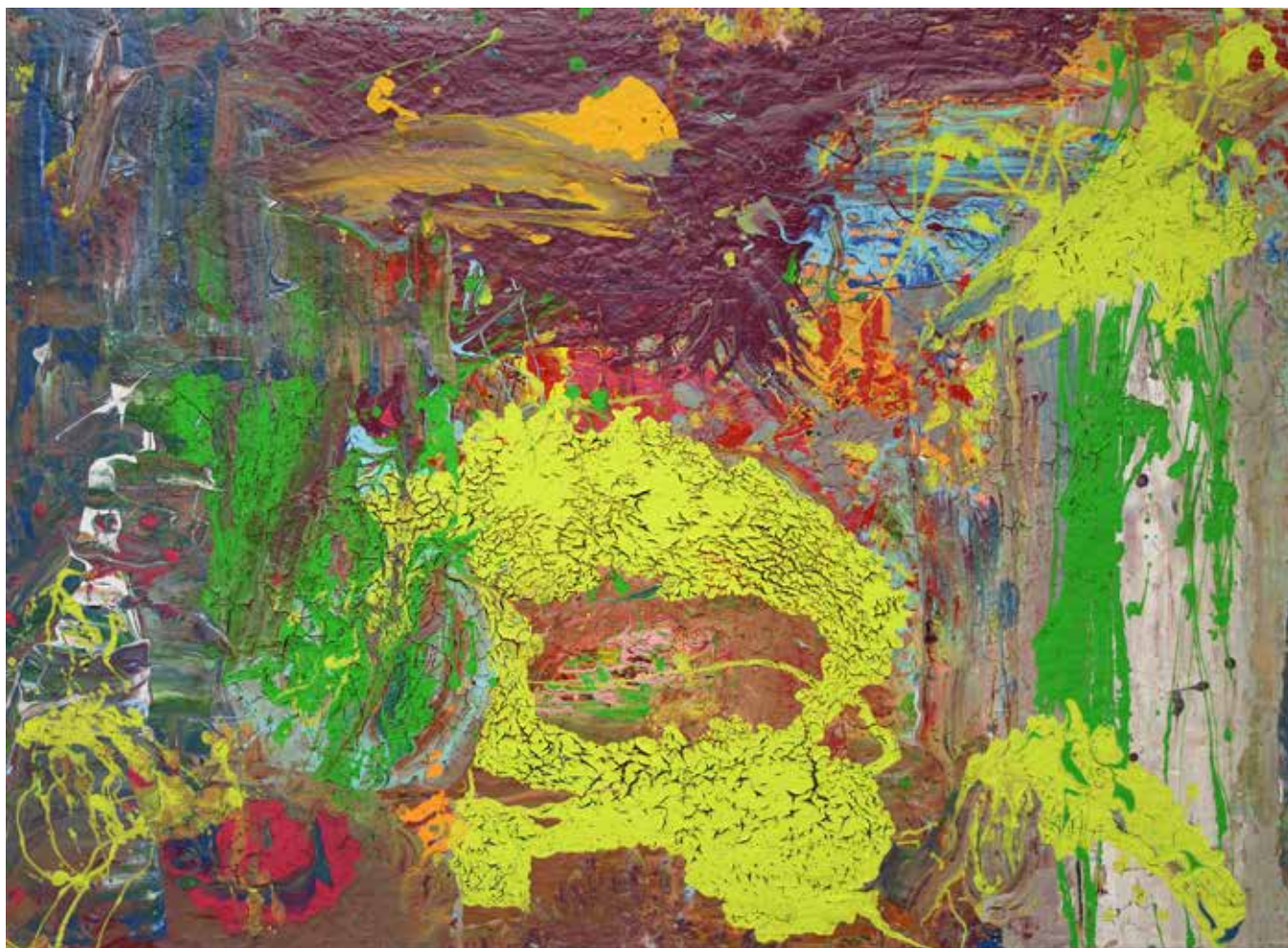
Serene Tunkey



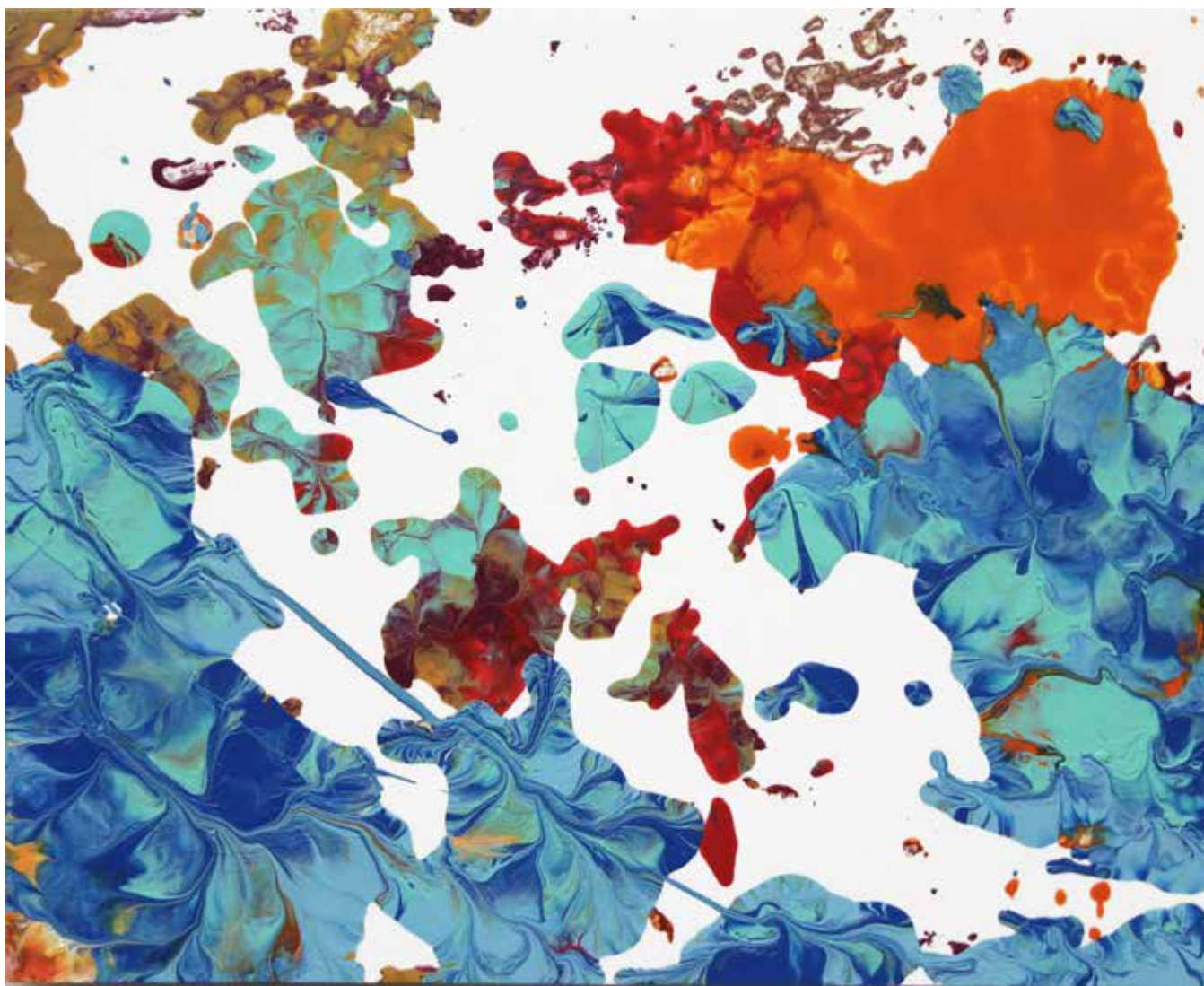
Elaine Chow



Mike Tunkey



Cluffalo: Spring 2017 Twelfth State, 2017, latex on expanded pvc, 32 x 44 inches



2017_05_28_01, 2017, latex on expanded pvc, 8 x 10 inches



2017_05_28_02, 2017, latex on expanded pvc, 8 x 10 inches



2017_05_28_03, 2017, latex on expanded pvc, 10 x 8 inches



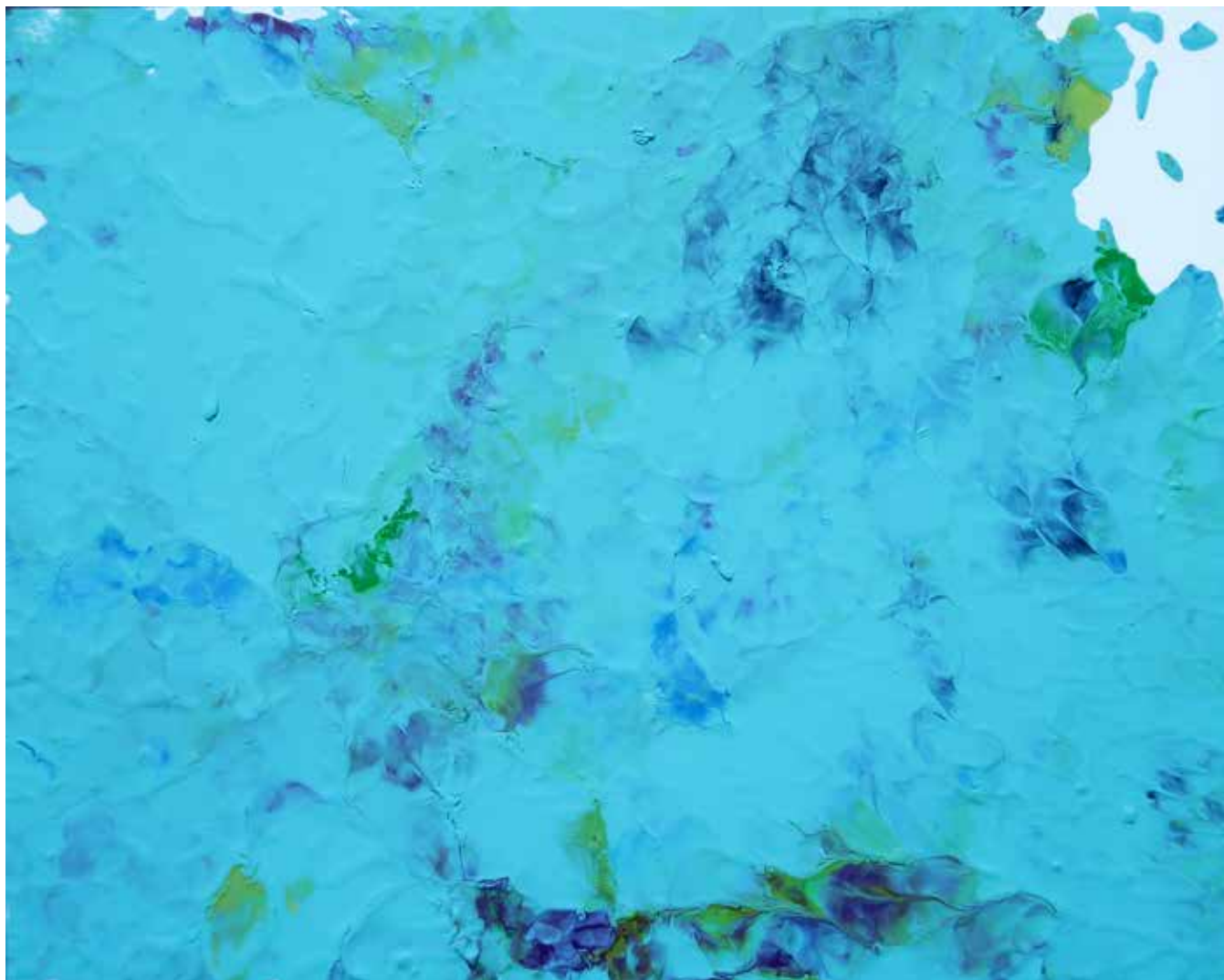
2017_05_28_04, 2017, latex on expanded pvc, 10 x 8 inches



Gillian Coykendall

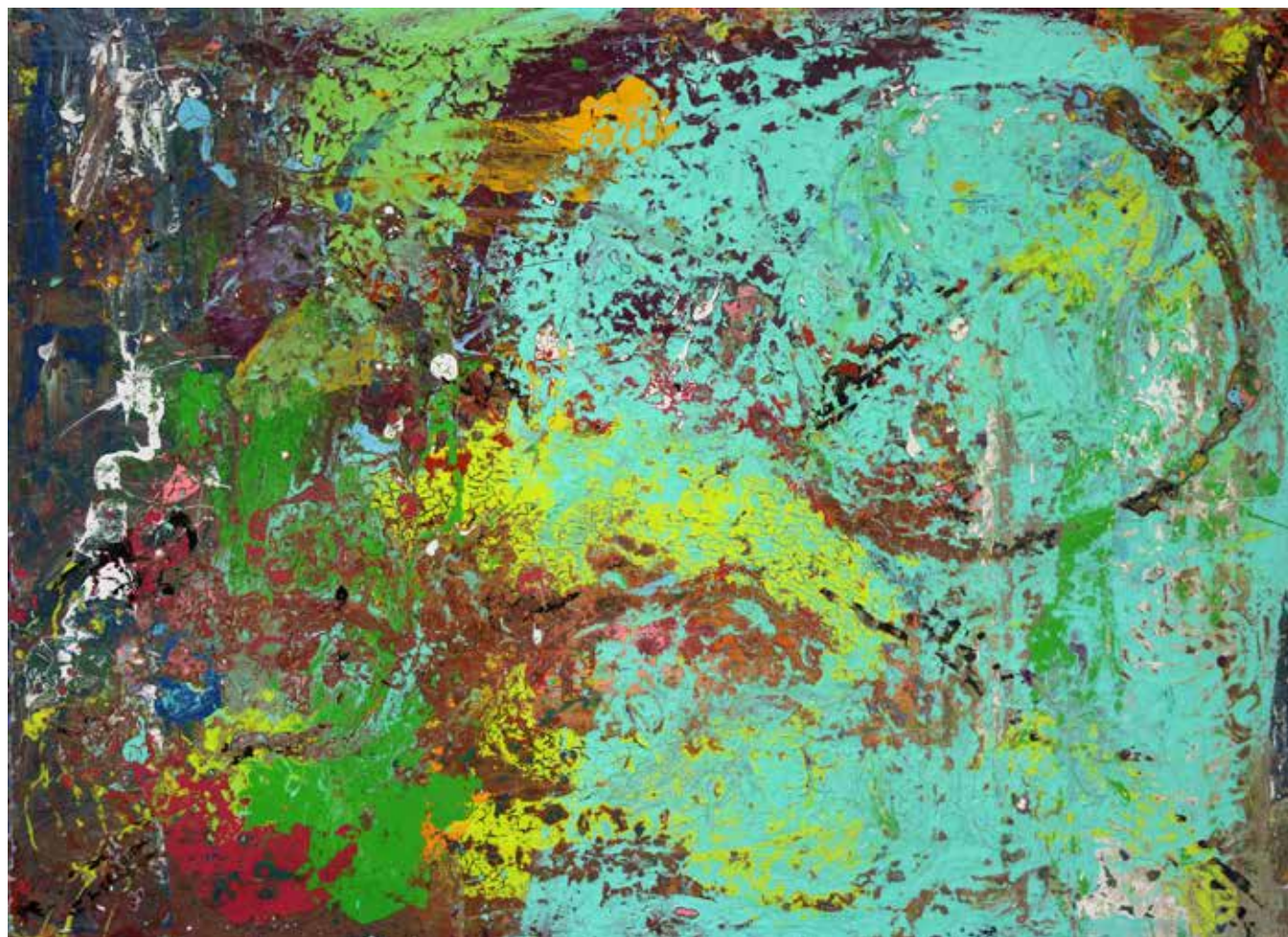


Cluffalo: Spring 2017 Thirteenth State, 2017, latex on expanded pvc, 32 x 44 inches



2017_06_11_01, 2017, latex on expanded pvc, 8 x 10 inches

THE FOURTEEN STAGES OF
FINISHING CLUFFFALO: SPRING 2017





























Cluffalo: Spring 2017, 2017, latex on expanded pvc, 32 x 44 inches