



CHARLES CLOUGH
CLUFFFALO: SUMMER 2017

I established the Cluffalo Institute in 2012 to manage my archive
and collection and to promote and administer the Cluffalo Painting
Workshop at the Roycroft in East Aurora, New York.

Cluffalo: Summer 2017

Here are the painters, states of the painting and mono-print take-aways made in
The Print Shop at The Roycroft in the Summer of 2017.

ISBN: 978-1-387-25034-9

© Charles Clough 2017

Cover: *Cluffalo: Summer 2017*, 2017, latex on expanded pvc, 32 x 44 inches

There are three kinds of *Clufffalo*s: *Seasons*, made by all who wish to participate, only at the Roycroft in East Aurora, New York; *Places*, such as *Clufffalo: Hamburg* commissioned by the Albright-Knox Art Gallery and Erie County PublicArt initiative, painted by 150 participants and hanging in the Hamburg, New York Public Library; and *Numbers*, painted by me alone.

The Clufffalo Painting Workshop at the Roycroft began on September 21st, 2015. Since then, and including the subject of this book, eight *Seasons* paintings have been completed by 347 participants in 141 sessions.

I provide the space of the workshop, tools and materials, my time and encouragement and freedom, such as it is limited by gravity, viscosity and drying time, for the participants to engage the experience. Through the course of each season the layers of paint accrue and the participants paint their take-aways and “be” within a transformative creative moment. At the end of the season I grind and polish the painting, with grits from 40 to 12,000 to finish the painting in a manner that fulfills my aesthetic.

The Workshop is a further development of my “structure of intentionality” (the phrase occurred to me many years ago but only recently, having searched, found a reference to John R. Searle, 1983, “Intentionality”), that I describe as “the photographic epic of a painter as a film or a ghost”. This is intuitively anchored in “the true, the good and the beautiful.”

Most of my aspirations have been realized—in terms of being an artist and participating in extending the family. After more than forty-five years in the field I’ve seen increasing interest in contemporary art accompanied by art that represents a grandiosity that runs counter to my taste. Thus the scale and parameters of production of the *Seasons* are modest and set in the upstate New York town in which I came to understand myself as an artist.

Time is marked by the hands of the participants. The documentation of the Workshop process is made into books, like this one, as a contribution to art history.

The project includes whoever wants to participate, so please make an appointment to paint and share the news of this cultural experiment. Although only one session can happen per day, the project is always “on”. This book follows a format of the participant(s), their state of *Clufffalo: Summer 2017* and then their take-away paintings. A separate publication presents stereo photos of details of the process and is available at www.clufff.com

—Charles Clough, 9/22/2017



Kari Krakow



Cluffalo: Summer 2017 First State, 2017, latex on expanded pvc, 32 x 44 inches



Maren Kuter



Bradley Kuter



Cluffalo: Summer 2017 Second State, 2017, latex on expanded pvc, 32 x 44 inches



Julie Leidel



Shawn Krueger



Peter Potter



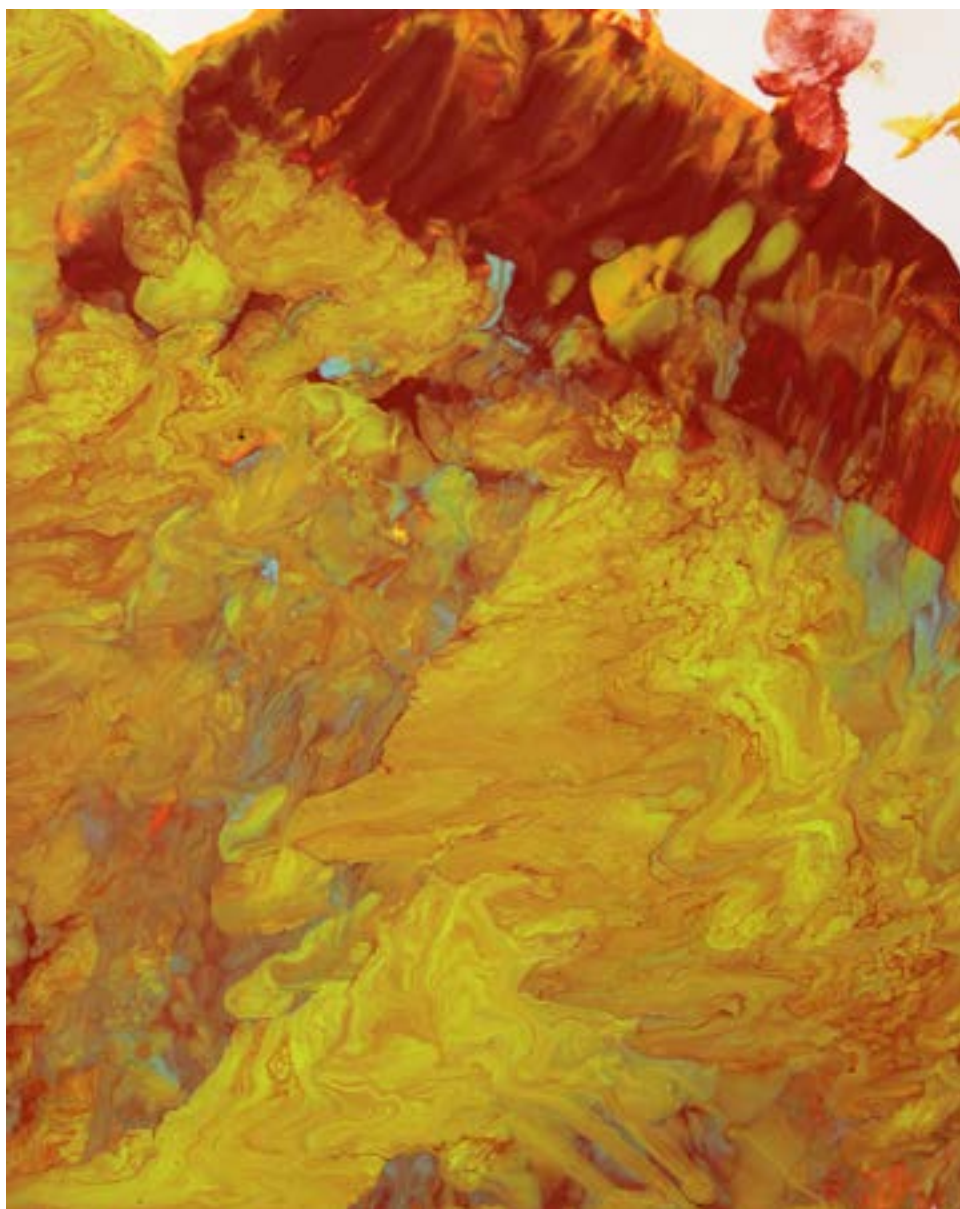
Cluffalo: Summer 2017 Third State, 2017, latex on expanded pvc, 32 x 44 inches



2017_06_28_01, 2017, latex on expanded pvc, 8 x 10 inches



2017_06_28_02, 2017, latex on expanded pvc, 10 x 8 inches



2017_06_28_03, 2017, latex on expanded pvc, 10 x 8 inches



2017_06_28_04, 2017, latex on expanded pvc, 8 x 10 inches



2017_06_28_05, 2017, latex on expanded pvc, 8 x 10 inches



Onur Rzayev



Leyla Rzayev



Javid Rzayev



Cluffalo: Summer 2017 Fourth State, 2017, latex on expanded pvc, 32 x 44 inches



2017_07_21_01, 2017, latex on expanded pvc, 8 x 10 inches



Sherry Prezioso



Cluffalo: Summer 2017 Fifth State, 2017, latex on expanded pvc, 32 x 44 inches



Amy Zuccaro



Kathleen M. Zuccaro



Cluffalo: Summer 2017 Sixth State, 2017, latex on expanded pvc, 32 x 44 inches



2017_07_23_01, 2017, latex on expanded pvc, 10 x 8 inches



Nancy H. Betker



Christine Fulton



Cluffalo: Summer 2017 Seventh State, 2017, latex on expanded pvc, 32 x 44 inches, 2017



2017_07_24_01, 2017, latex on expanded pvc, 10 x 8 inches



2017_07_24_02, 2017, latex on expanded pvc, 10 x 8 inches



Patricia Neary



Patricia Seibert



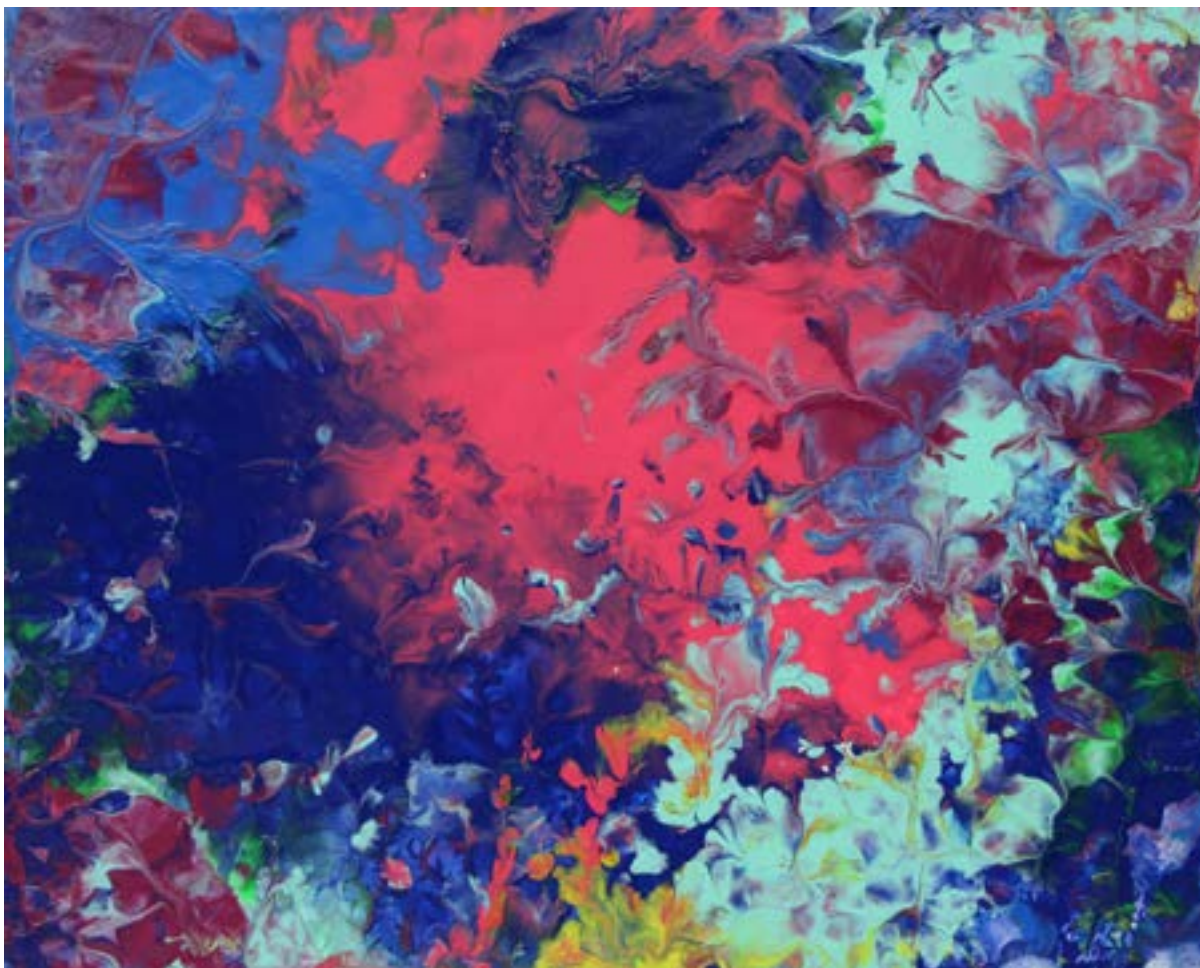
Norene E. Seibert



Jeanie Daley



Cluffalo: Summer 2017 Eighth State, 2017, latex on expanded pvc, 32 x 44 inches, 2017



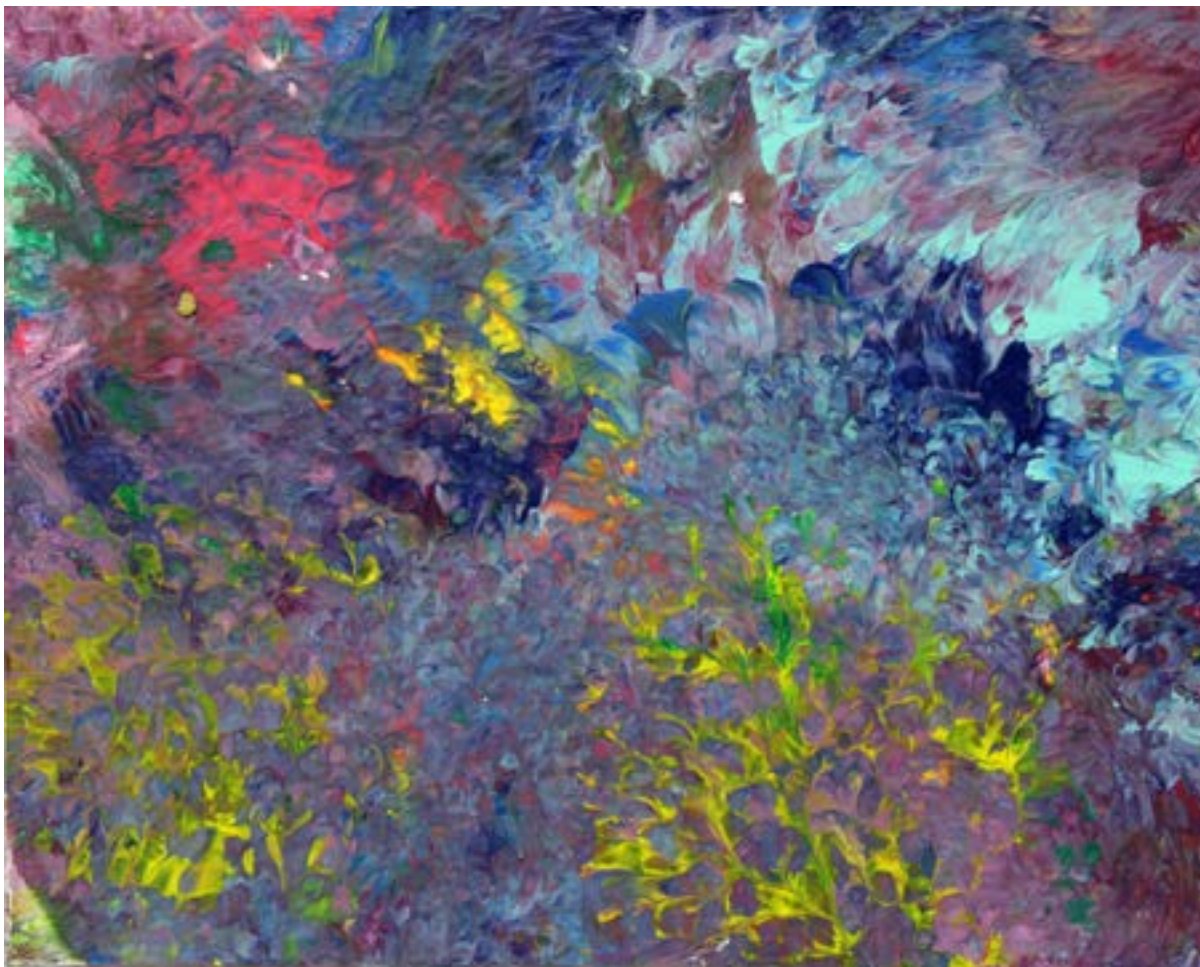
2017_07_26_01, 2017, latex on expanded pvc, 8 x 10 inches



2017_07_26_02, 2017, latex on expanded pvc, 8 x 10 inches



2017_07_26_03, 2017, latex on expanded pvc, 8 x 10 inches



2017_07_26_04, 2017, latex on expanded pvc, 8 x 10 inches



Brandon Smith



Marissa Winder



Cluffalo: Summer 2017 Ninth State, 2017, latex on expanded pvc, 32 x 44 inches



2017_07_27_01, 2017, latex on expanded pvc, 8 x 10 inches



2017_07_27_02, 2017, latex on expanded pvc, 8 x 10 inches



Sherry and Rhea Prezioso



Cluffalo: Summer 2017 Tenth State, 2017, latex on expanded pvc, 32 x 44 inches



2017_07_29_01, 2017, latex on expanded pvc, 10 x 8 inches



2017_07_29_02, 2017, latex on expanded pvc, 10 x 8 inches



Brad Dean



Cluffalo: Summer 2017 Eleventh State, 2017, latex on expanded pvc, 32 x 44 inches



2017_07_31_01, 2017, latex on expanded pvc, 8 x 10 inches



Johnny Gallick



Ginger Gallick



John McKendry



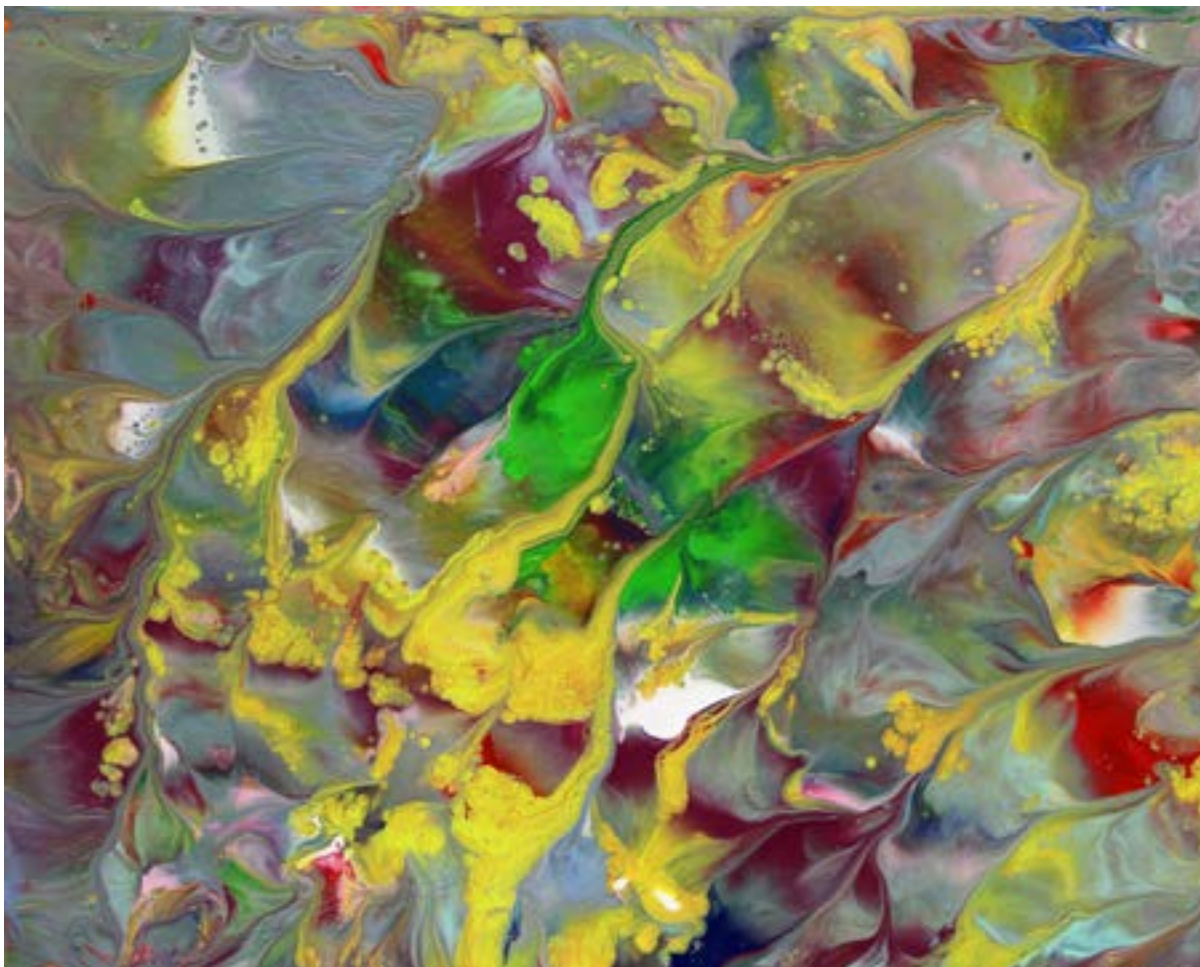
Robyn Gallick



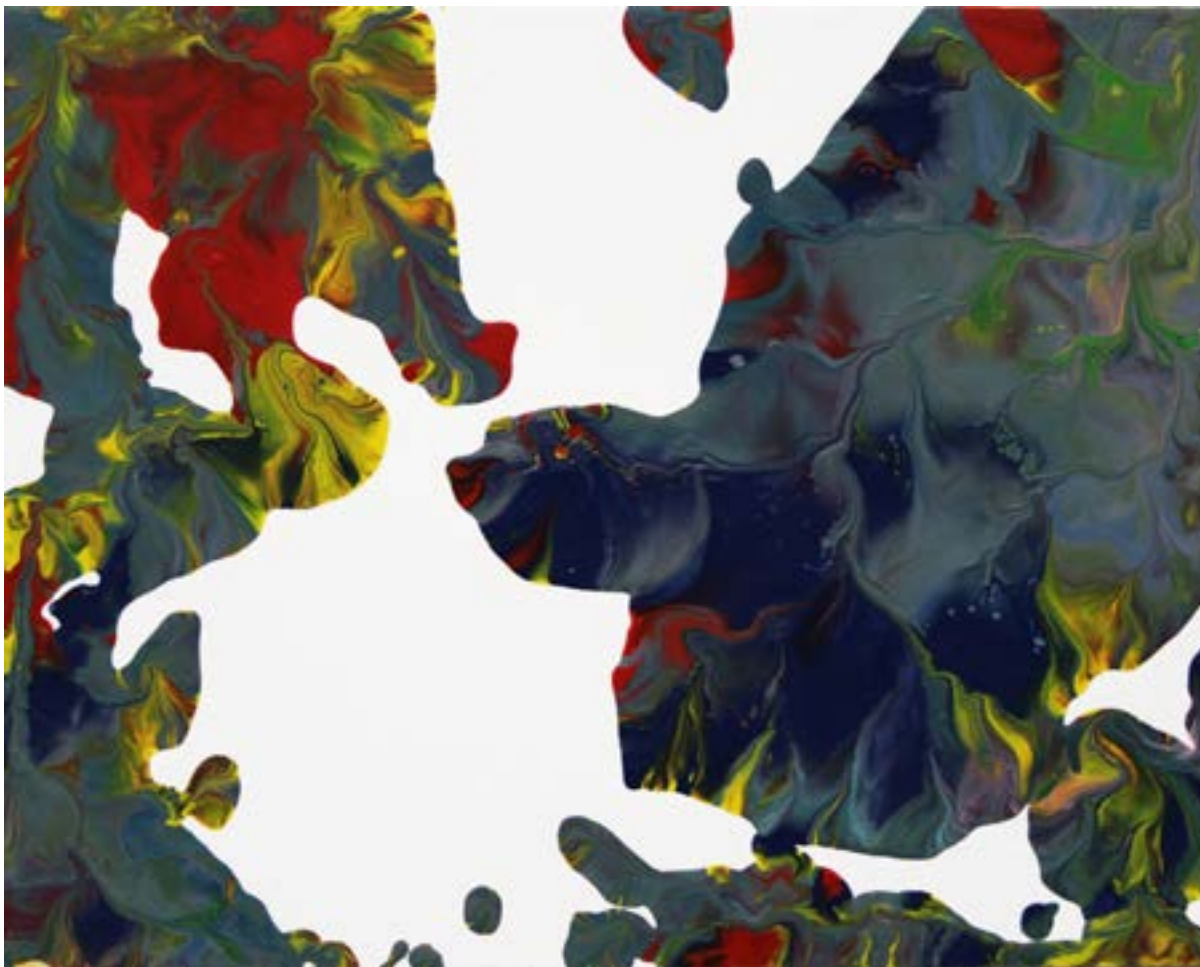
Cluffalo: Summer 2017 Twelfth State, 2017, latex on expanded pvc, 32 x 44 inches



2017_08_02_01, 2017, latex on expanded pvc, 8 x 10 inches



2017_08_02_02, 2017, latex on expanded pvc, 8 x 10 inches



2017_08_02_03, 2017, latex on expanded pvc, 8 x 10 inches



2017_08_02_04, 2017, latex on expanded pvc, 10 x 8 inches



Susan Koch



Anita Doran



Cluffalo: Spring 2017 Thirteenth State, 2017, latex on expanded pvc, 32 x 44 inches



Adam Baumwell



Corbin Baumwell



Bradley Baumwell



Eli Baumwell



Courtney Baumwell



Cluffalo: Spring 2017 Fourteenth State, 2017, latex on expanded pvc, 32 x 44 inches



2017_08_05_01, 2017, latex on expanded pvc, 8 x 10 inches



2017_08_05_02, 2017, latex on expanded pvc, 8 x 10 inches



2017_08_05_03, 2017, latex on expanded pvc, 8 x 10 inches



Betsy Marie



Cluffalo: Spring 2017 Fifteenth State, 2017, latex on expanded pvc, 32 x 44 inches



2017_08_08_01, 2017, latex on expanded pvc, 10 x 8 inches



Joan Murray



Anne Giandalone



Cluffalo: Spring 2017 Sixteenth State, 2017, latex on expanded pvc, 32 x 44 inches



2017_08_18_02, 2017, latex on expanded pvc, 8 x 10 inches



2017_08_18_02, 2017, latex on expanded pvc, 8 x 10 inches



Pavel Gutkin



Gianine Burgo



Jeffrey Gutkin



Cluffalo: Spring 2017 Seventeenth State, 2017, latex on expanded pvc, 32 x 44 inches



2017_08_19_01, 2017, latex on expanded pvc, 8 x 10 inches



2017_08_19_02, 2017, latex on expanded pvc, 8 x 10 inches



Megan Woloszyn



Eddie Knibloe



Christine Goress-Barton



Gretchen Grobe



Mary Cate Kubera



Amy E. Johnson



Cluffalo: Spring 2017 Eighteenth State, 2017, latex on expanded pvc, 32 x 44 inches



2017_08_20_01, 2017, latex on expanded pvc, 8 x 10 inches



2017_08_20_02, 2017, latex on expanded pvc, 8 x 10 inches



2017_08_20_03, 2017, latex on expanded pvc, 8 x 10 inches



2017_08_20_04, 2017, latex on expanded pvc, 8 x 10 inches



2017_08_20_05, 2017, latex on expanded pvc, 10 x 8 inches



2017_08_20_06, 2017, latex on expanded pvc, 10 x 8 inches



Kathy Trimmer



Cluffalo: Spring 2017 Nineteenth State, 2017, latex on expanded pvc, 32 x 44 inches



Jill Favata



Corinne Favata



Sean Favata



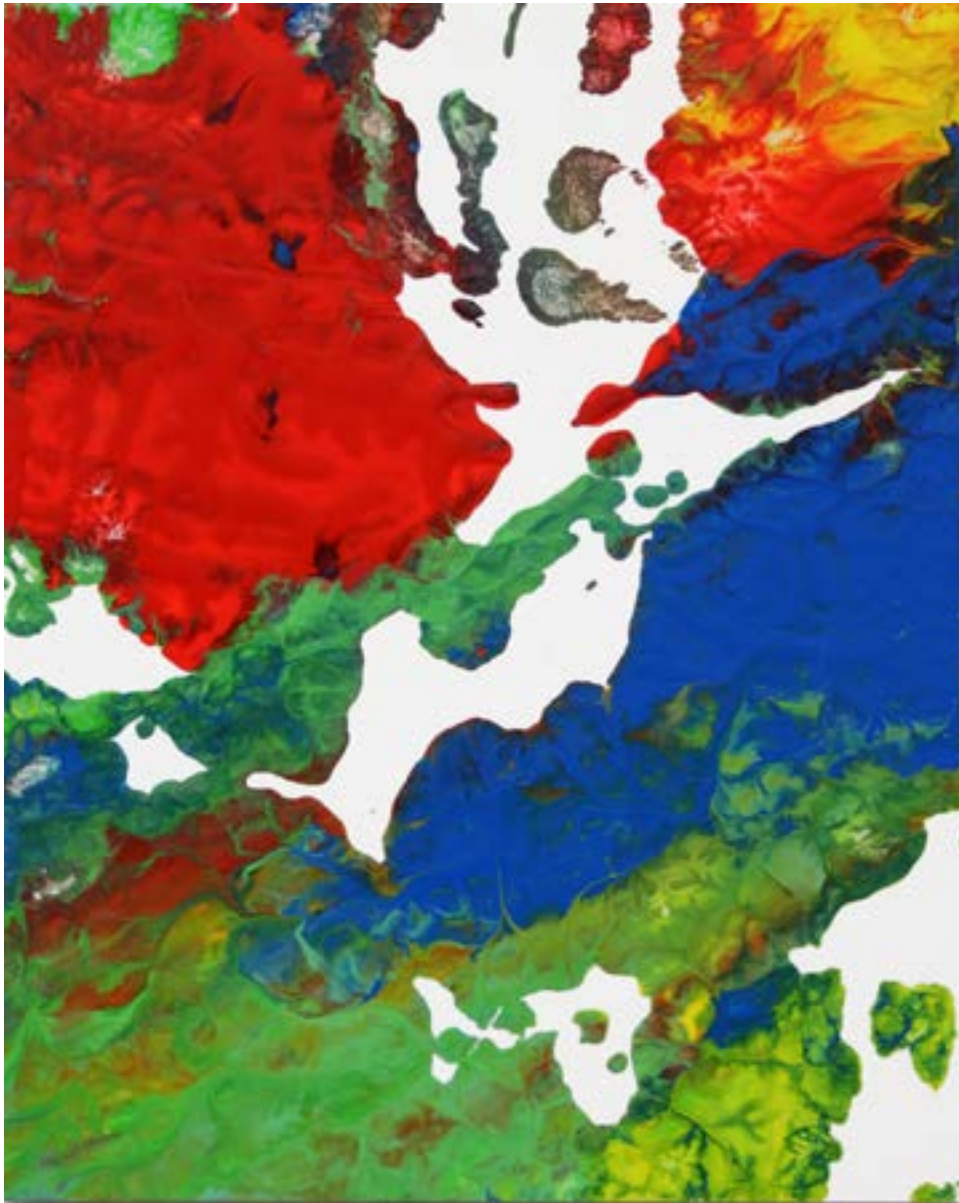
Cluffalo: Spring 2017 Twentieth State, 2017, latex on expanded pvc, 32 x 44 inches



2017_08_25_01, 2017, latex on expanded pvc, 8 x 10 inches



2017_08_25_02, 2017, latex on expanded pvc, 8 x 10 inches



2017_08_25_03, 2017, latex on expanded pvc, 10 x 8 inches



Tina Dillman



Cluffalo: Spring 2017 Twenty-first State, 2017, latex on expanded pvc, 32 x 44 inches



2017_08_28_01, 2017, latex on expanded pvc, 10 x 8 inches



Candace Niznik



Benjamin Niznik



Cluffalo: Spring 2017 Twenty-second State, 2017, latex on expanded pvc, 32 x 44 inches



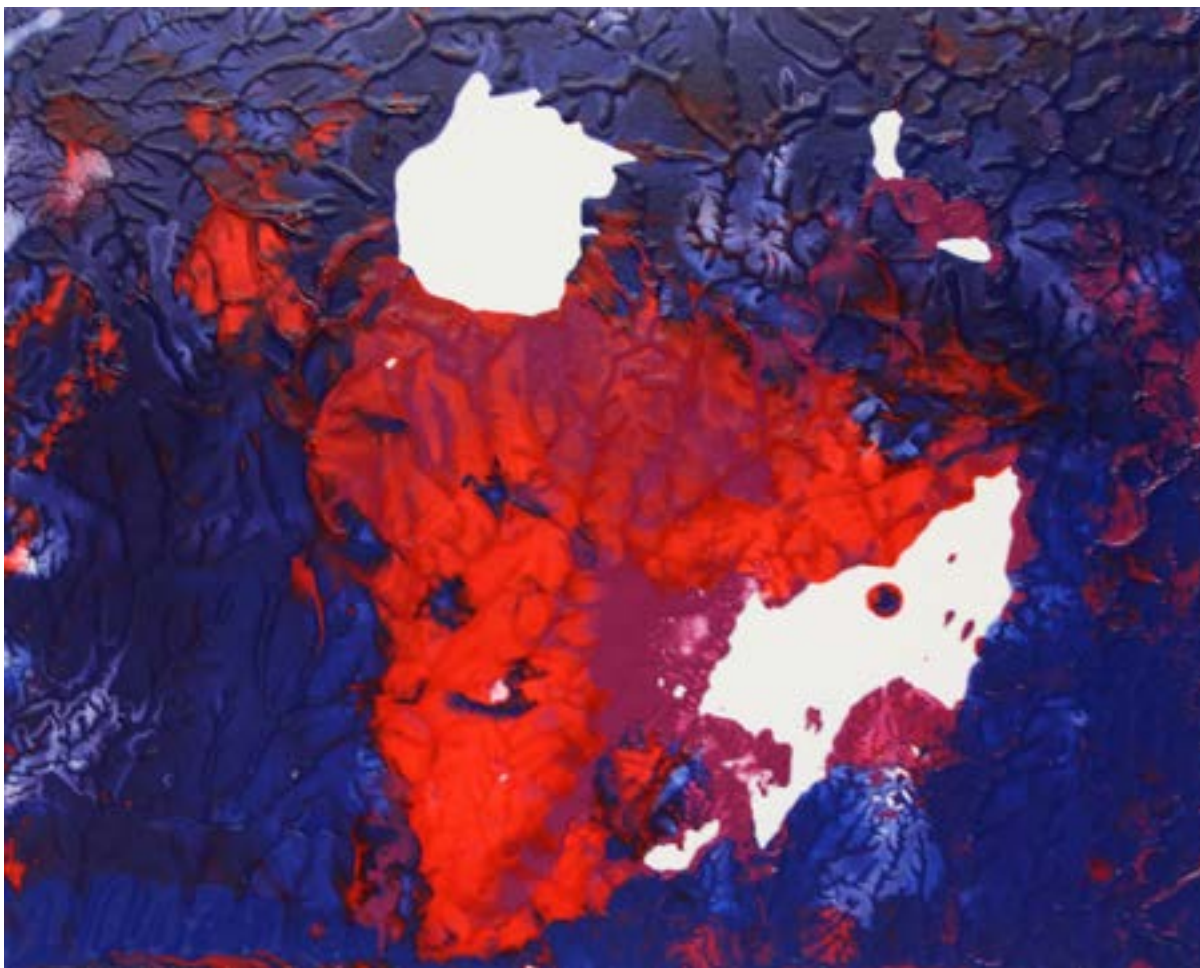
2017_08_29_01, 2017, latex on expanded pvc, 10 x 8 inches



Jana Eisenberg

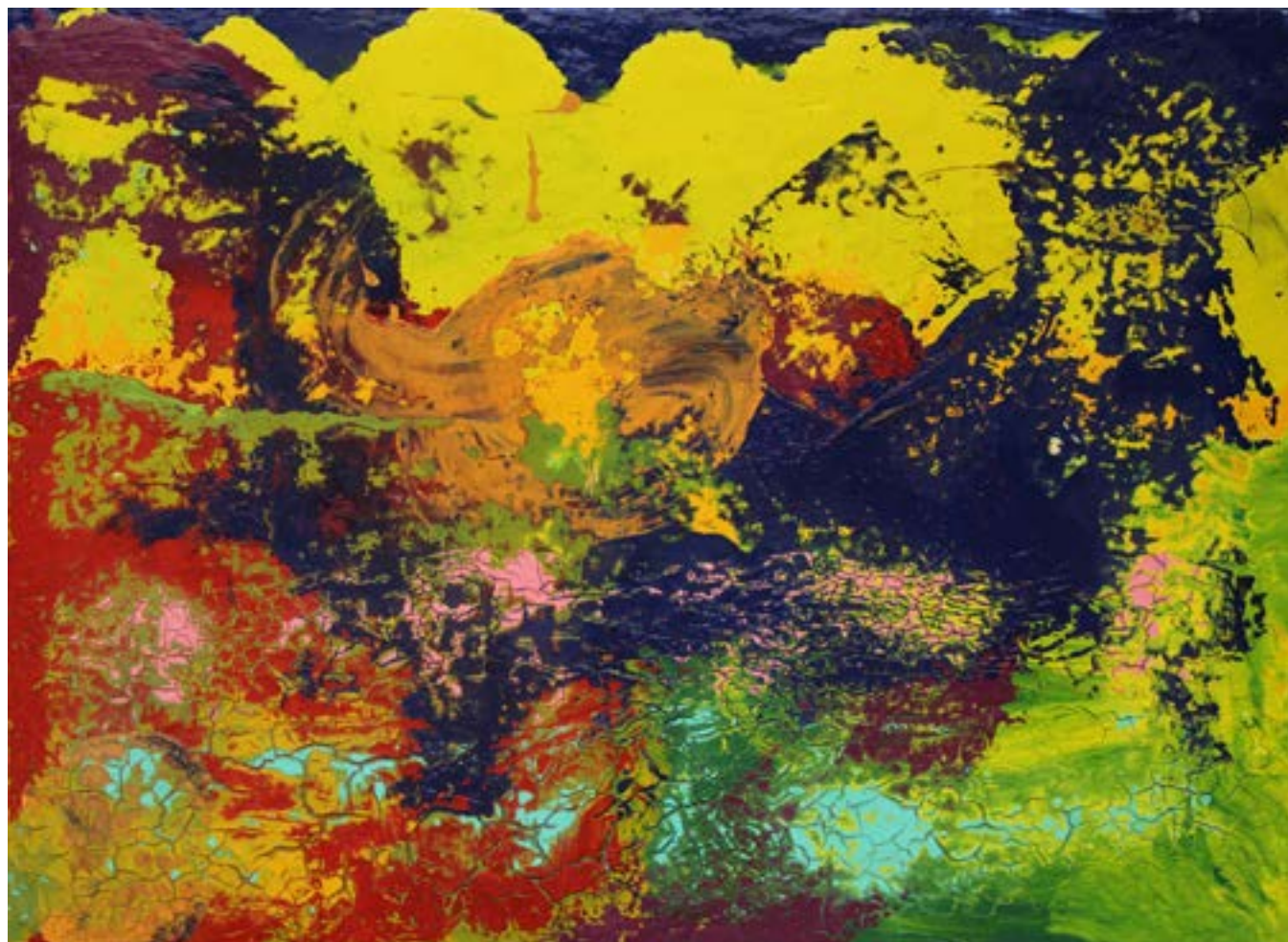


Cluffalo: Spring 2017 Twenty-third State, 2017, latex on expanded pvc, 32 x 44 inches



2017_09_20_01, 2017, latex on expanded pvc, 8 x 10 inches

THE FIVE STAGES OF FINISHING CLUFFFALO: SUMMER 2017











Cluffalo: Summer 2017, 2017, latex on expanded pvc, 32 x 44 inches