



CHARLES CLOUGH  
CLUFFFALO: SUMMER 2018

I established the Clufffalo Institute in 2012 to manage my archive  
and collection and to promote and administer the Clufffalo Painting  
Workshop at the Roycroft in East Aurora, New York.

*Clufffalo: Summer 2018*

Here are the painters, states of the painting and mono-print take-aways made in  
The Print Shop at The Roycroft in the Summer of 2018.

ISBN: 978-0-359-10715-5

© Charles Clough 2018

Cover: *Clufffalo: Summer 2018, 2018*, latex on expanded pvc, 32 x 44 inches

There are three kinds of Clufffaloes: *Clufffaloes: Seasons*, made by all who wish to participate, only at the Roycroft in East Aurora, New York; *Places*, such as *Clufffalo: Hamburg* commissioned by the Albright-Knox Art Gallery and Erie County PublicArt initiative, painted by 150 participants and hanging in the Hamburg, New York Public Library as part of the Albright-Knox's permanent collection; and *Numbers*, painted by me, alone.

The Clufffalo Painting Workshop at the Roycroft began on September 21st, 2015. Since then, and including the subject of this book, eleven *Seasons* paintings have been completed by 439 participants in 182 sessions.

I provide the space of the workshop, tools and materials, my time and encouragement and freedom, such as it is limited by gravity, viscosity and drying time, for the participants to engage the experience. Through the course of each season the layers of paint accrue and the participants paint their take-aways and “be” within a transformative creative moment. Until this session, at the end of the season I grind and polish the painting, with grits from 40 to 12,000 to finish the painting in a manner that fulfills my aesthetic. Due to the rubbery texture of the paint I used a gouge to effect the subtractive finishing of *Summer 2018*.

The Workshop is a further development of my “structure of intentionality”, that I describe as “the photographic epic of a painter as a film or a ghost”. This is intuitively anchored in “the true, the good and the beautiful.”

Most of my aspirations have been realized—in terms of being an artist and participating in extending the family. After more than forty-five years in the field I've seen increasing interest in contemporary art accompanied by art that represents a grandiosity that runs counter to my taste. Thus the scale and parameters of production of the *Seasons* are modest and set in the upstate New York town in which I came to understand myself as an artist.

Time is marked by the hands of the participants. The documentation of the Workshop process is made into books, like this one, as a contribution to art history.

The project includes whoever wants to participate, so please make an appointment to paint and share the news of this cultural experiment. Although only one session can happen per day, the project is always “on”. This book follows a format of the participant(s), their state of *Clufffalo: Summer 2018* and then their take-away paintings. A separate publication presents stereo photos of details of the process and is available at [www.clufff.com](http://www.clufff.com)

—Charles Clough, 9/21/2018



Mary Lynn Lister Santavy



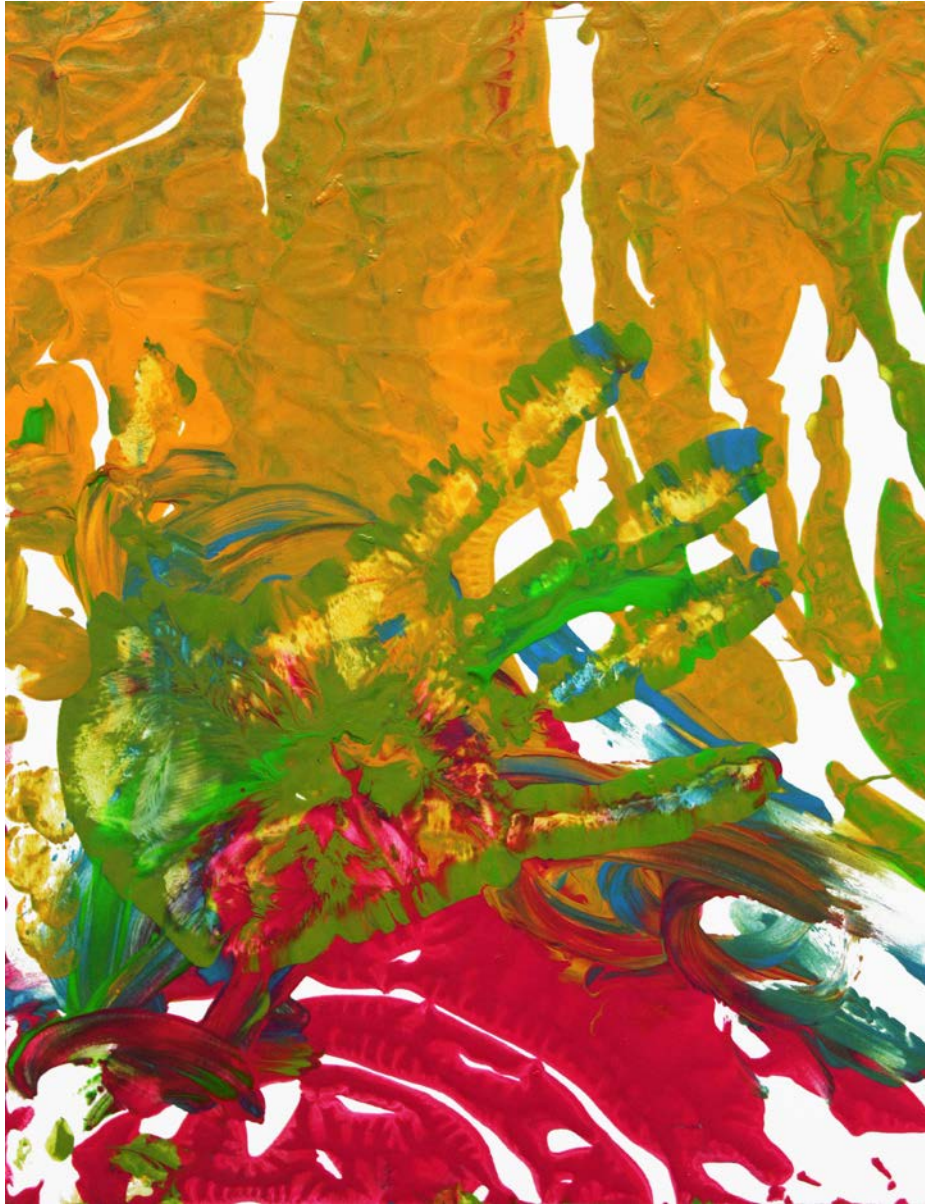


Mark Santavy



*Cluffalo: Summer 2018 First State, 2018, latex on expanded pvc, 32 x 44 inches*





2018\_06\_23\_01, 2018, latex on expanded pvc, 10 x 8 inches



2018\_06\_23\_02, 2018, latex on expanded pvc, 10 x 8 inches

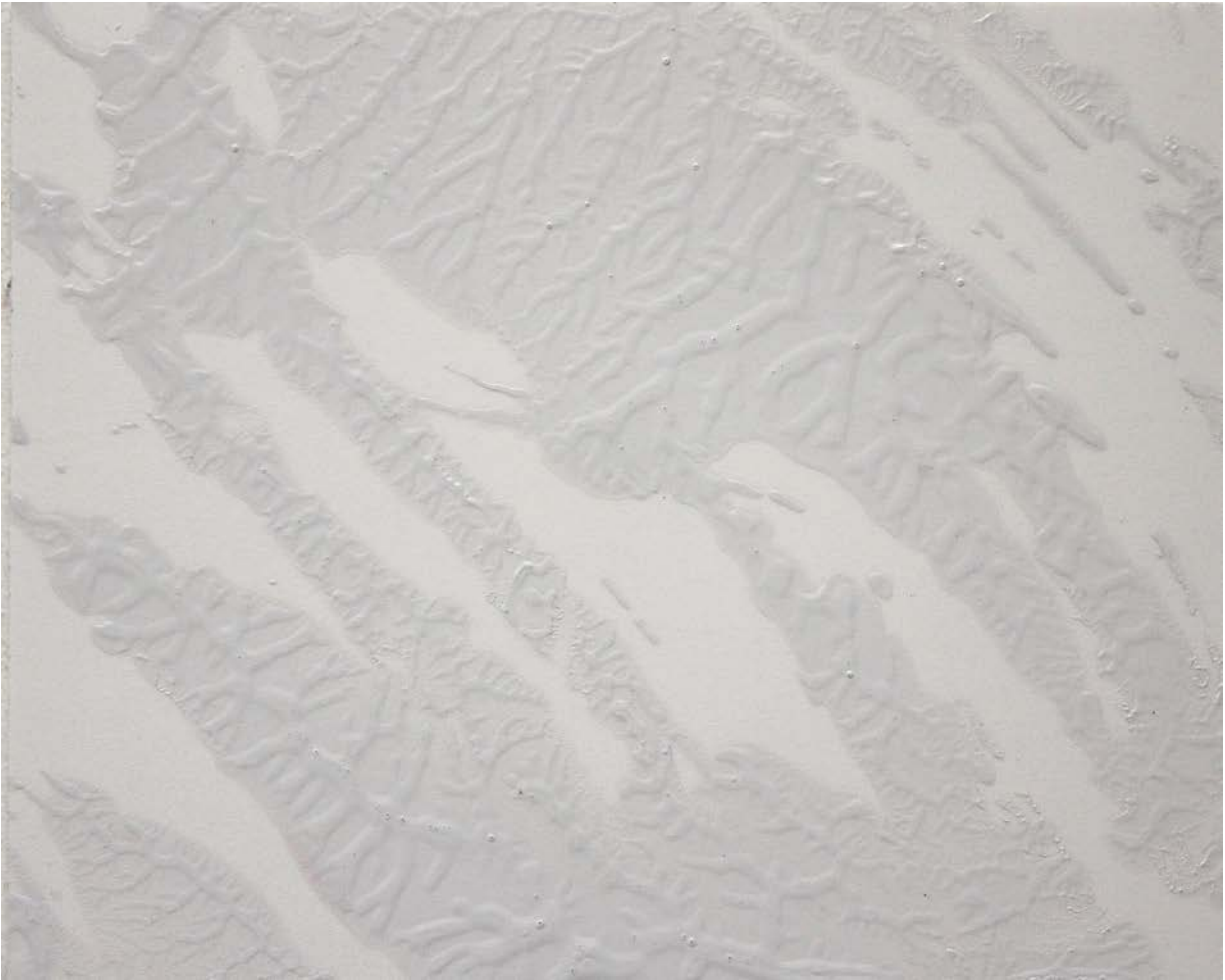




Colleen Cassety



*Cluffalo: Summer 2018 Second State, 2018, latex on expanded pvc, 32 x 44 inches*



*2018\_07\_13\_01*, 2018, latex on expanded pvc, 8 x 10 inches





Maia Hunter



*Cluffalo: Summer 2018 Third State, 2018, latex on expanded pvc, 32 x 44 inches*



*2018\_07\_17\_01*, 2018, latex on expanded pvc, 8 x 10 inches





*2018\_07\_17\_02, 2018, latex on expanded pvc, 8 x 10 inches*



Jack Edson



*Cluffalo: Summer 2018 Fourth State, 2018, latex on expanded pvc, 32 x 44 inches*





*2018\_07\_18\_01*, 2018, latex on expanded pvc, 8 x 10 inches



Jeannine Weber Kahabka



Sarah Bishop





Tracy Martelli



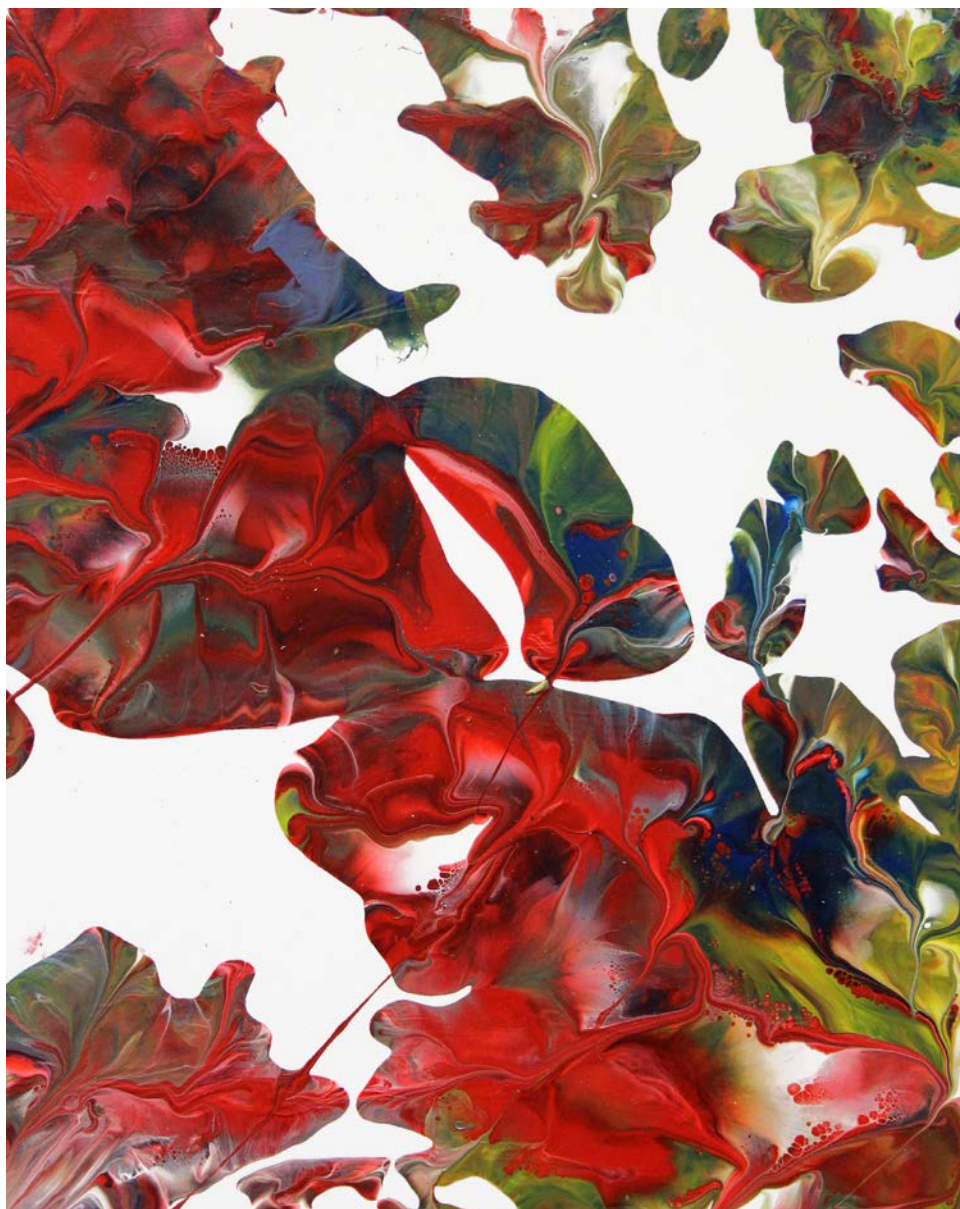
John Kinkaide



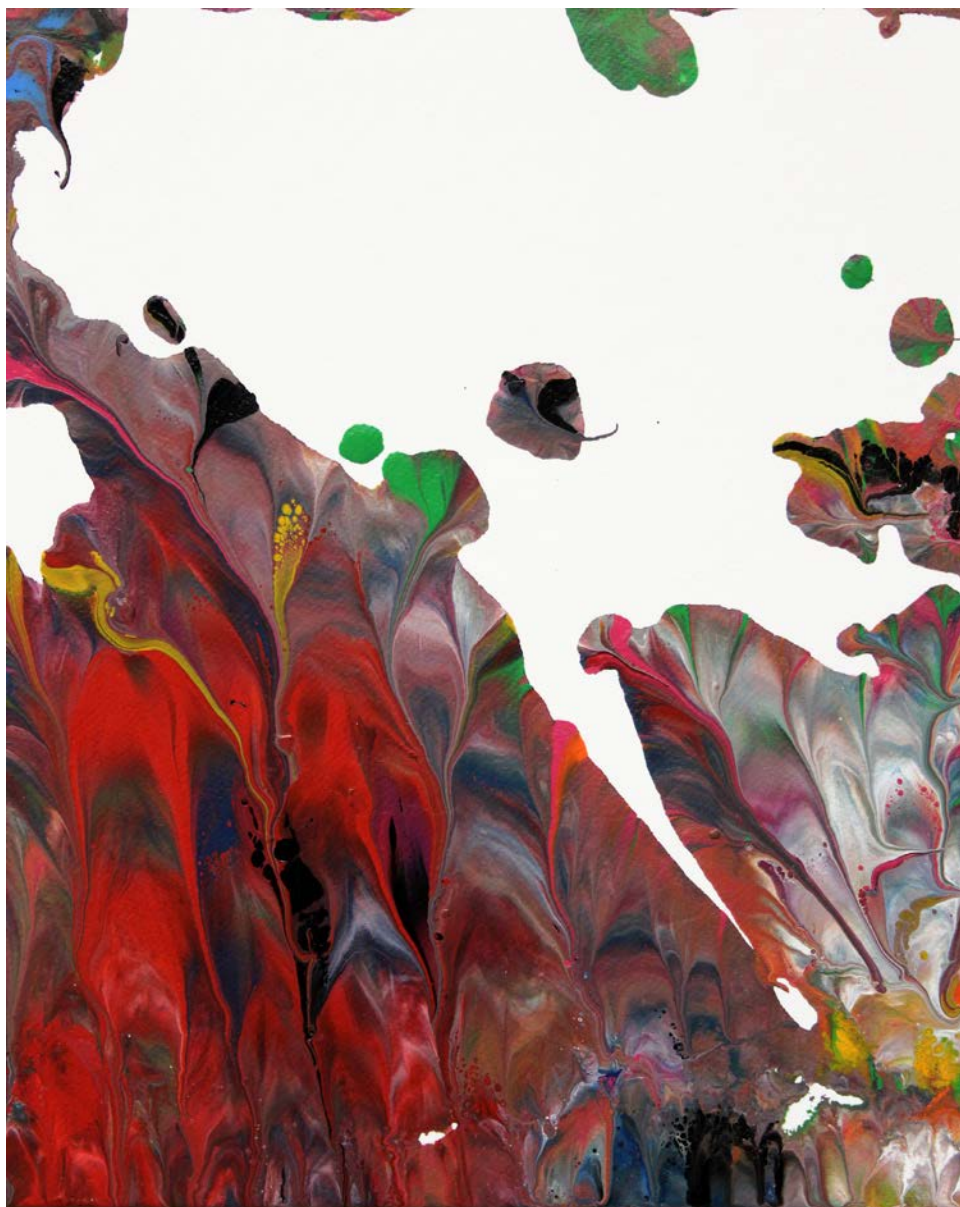


*Cluffalo: Summer 2018 Fifth State, 2018, latex on expanded pvc, 32 x 44 inches*

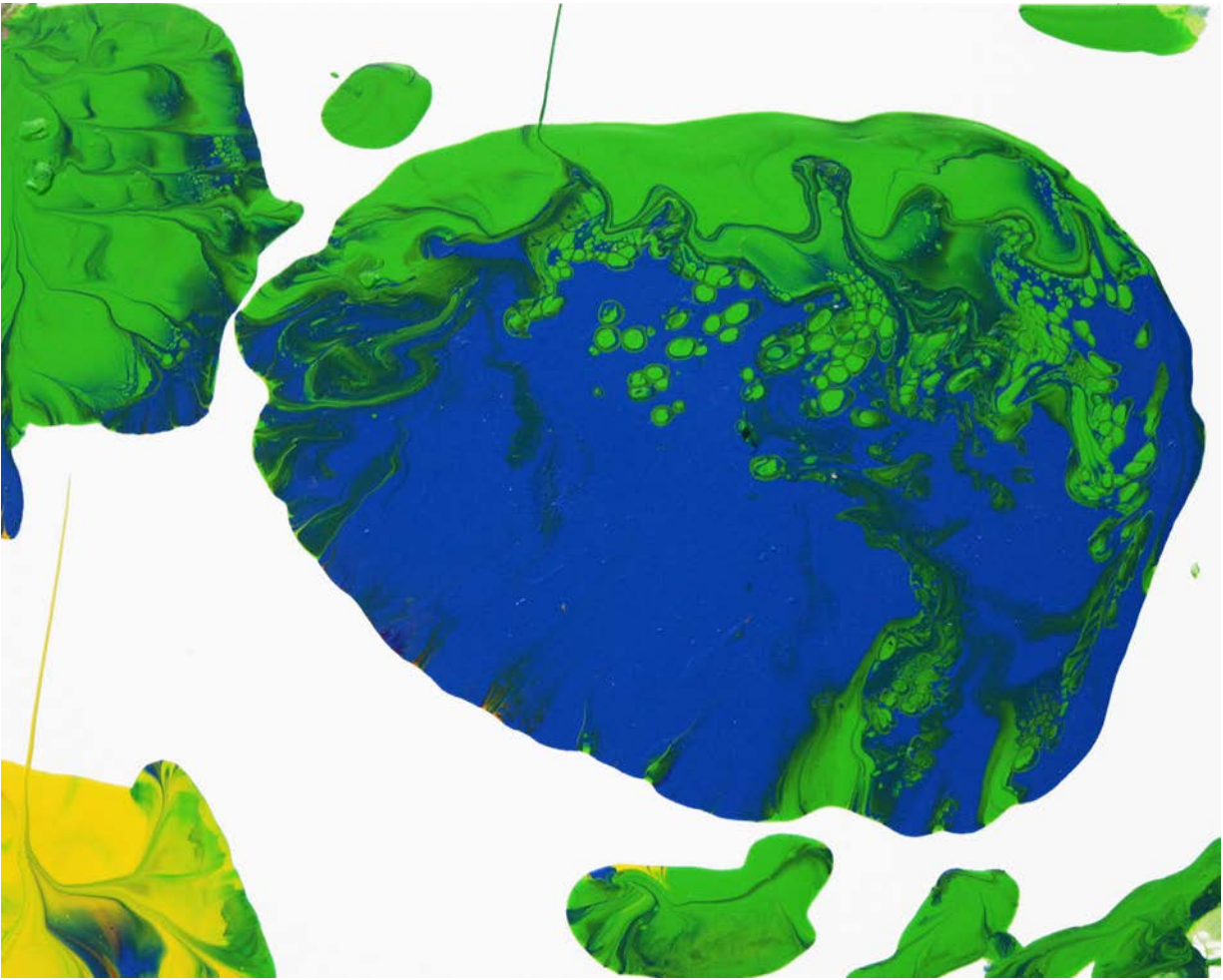




2018\_07\_19\_01, 2018, latex on expanded pvc, 10 x 8 inches



2018\_07\_19\_02, 2018, latex on expanded pvc, 10 x 8 inches

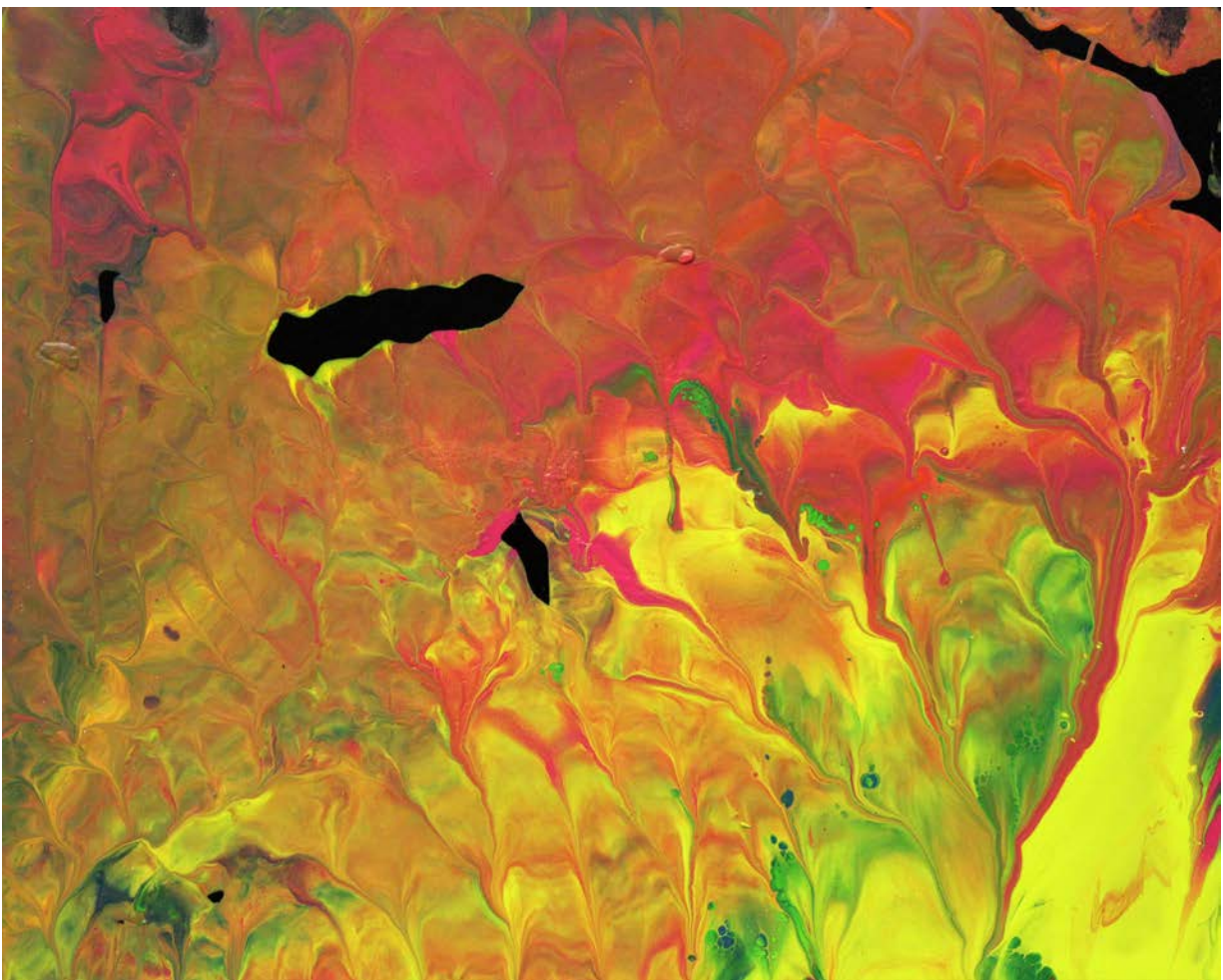


2018\_07\_19\_03, 2018, latex on expanded pvc, 8 x 10 inches





2018\_07\_19\_04, 2018, latex on expanded pvc, 8 x 10 inches

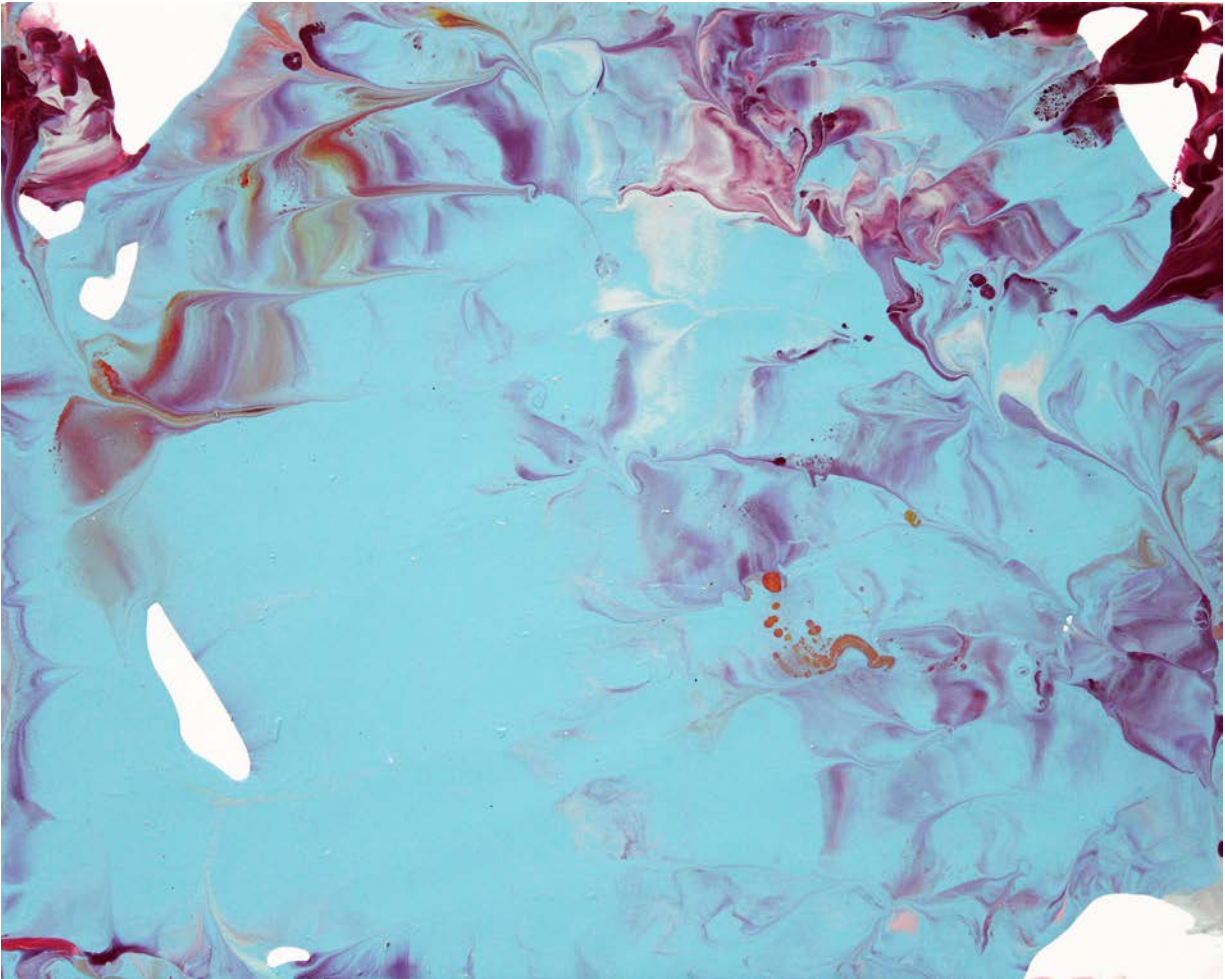


2018\_07\_19\_05 2018, latex on expanded pvc, 8 x 10 inches



2018\_07\_19\_06, 2018, latex on expanded pvc, 8 x 10 inches





2018\_07\_19\_07, 2018, latex on expanded pvc, 8 x 10 inches



Mavis Hezel



Edie Berta





Frances Berta



Merle Hezel



*Cluffalo: Summer 2018 Sixth State, 2018, latex on expanded pvc, 32 x 44 inches*

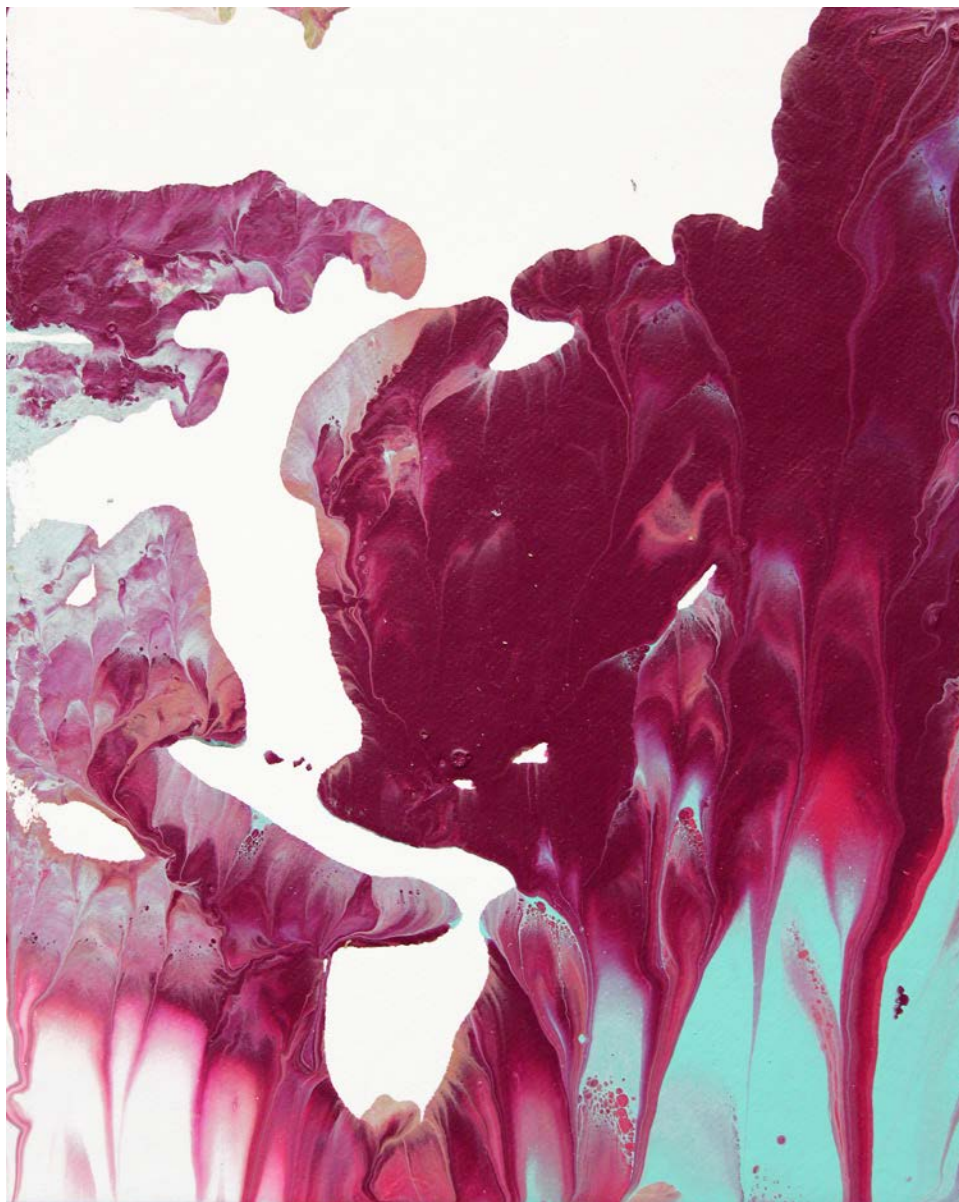




2018\_07\_21\_01, 2018, latex on expanded pvc, 10 x 8 inches



2018\_07\_21\_02, 2018, latex on expanded pvc, 10 x 8 inches



2018\_07\_214\_03, 2018, latex on expanded pvc, 10 x 8 inches





2018\_07\_21\_04, 2018, latex on expanded pvc, 10 x 8 inches



2018\_07\_21\_05, 2018, latex on expanded pvc, 8 x 10 inches

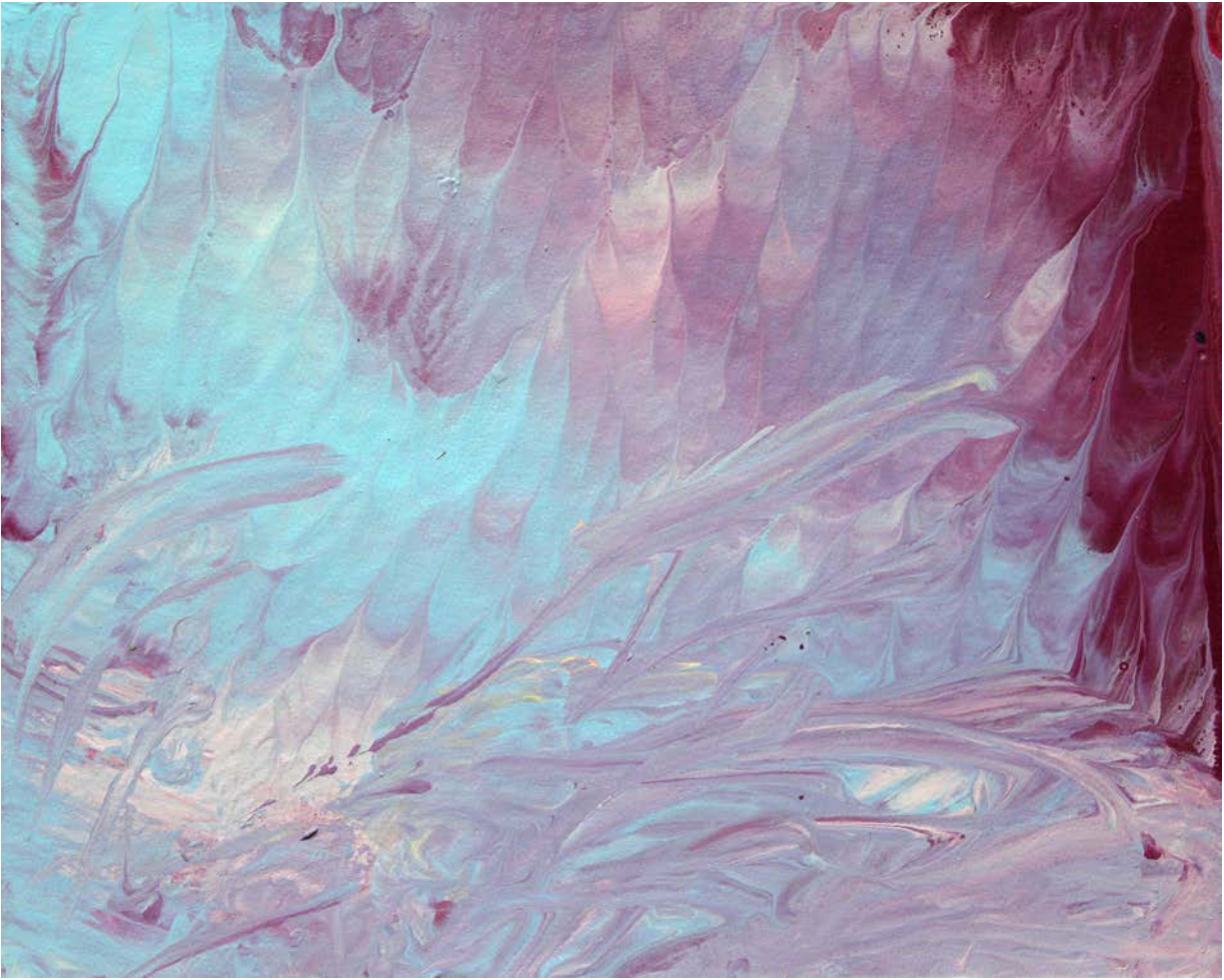


2018\_07\_21\_06, 2018, latex on expanded pvc, 8 x 10 inches

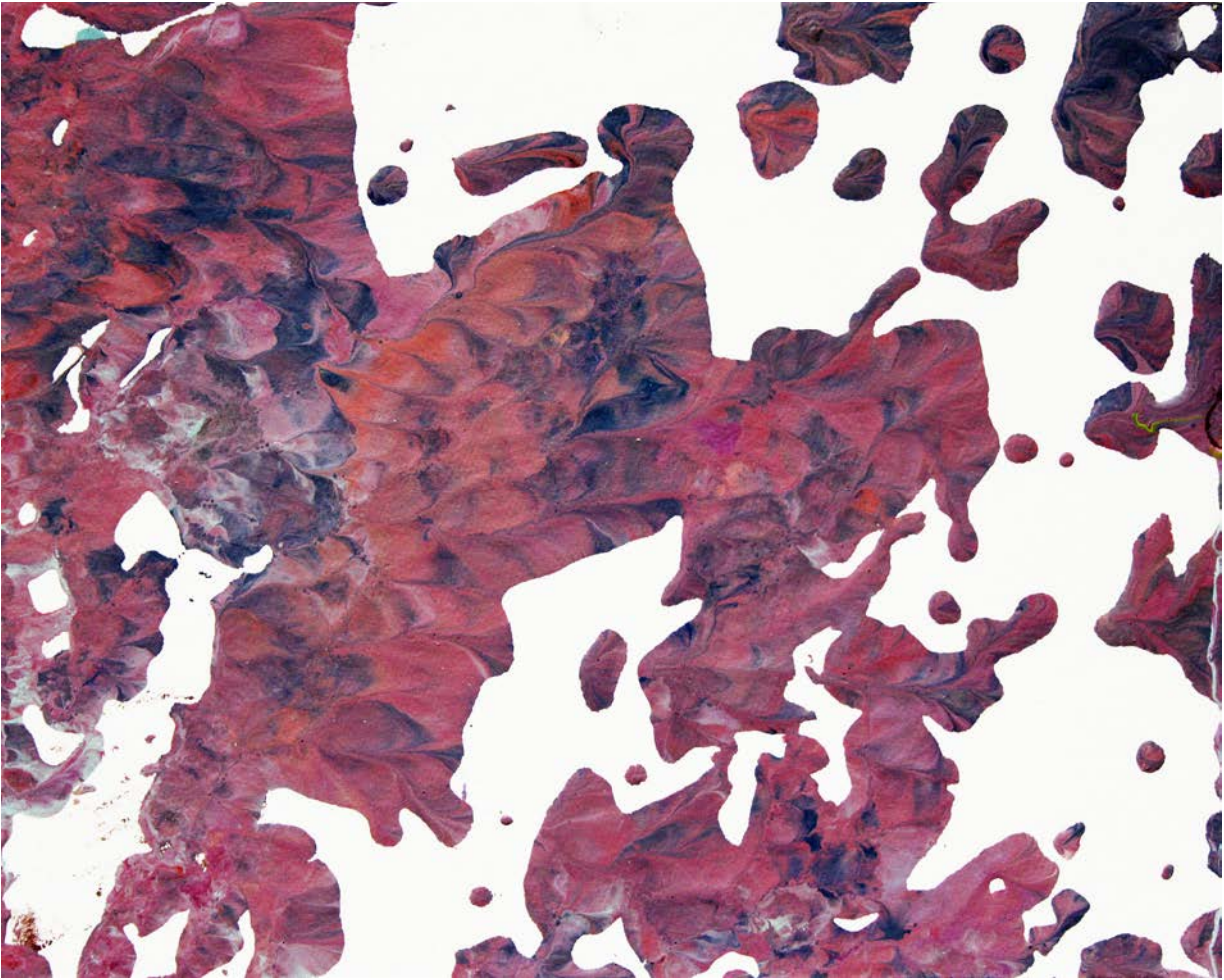




2018\_07\_21\_07, 2018, latex on expanded pvc, 8 x 10 inches



2018\_07\_21\_08, 2018, latex on expanded pvc, 8 x 10 inches



2018\_07\_21\_09, 2018, latex on expanded pvc, 8 x 10 inches





Kathe Aspass



*Cluffalo: Summer 2018 Seventh State, 2018, latex on expanded pvc, 32 x 44 inches*



Garin Tomaszewski



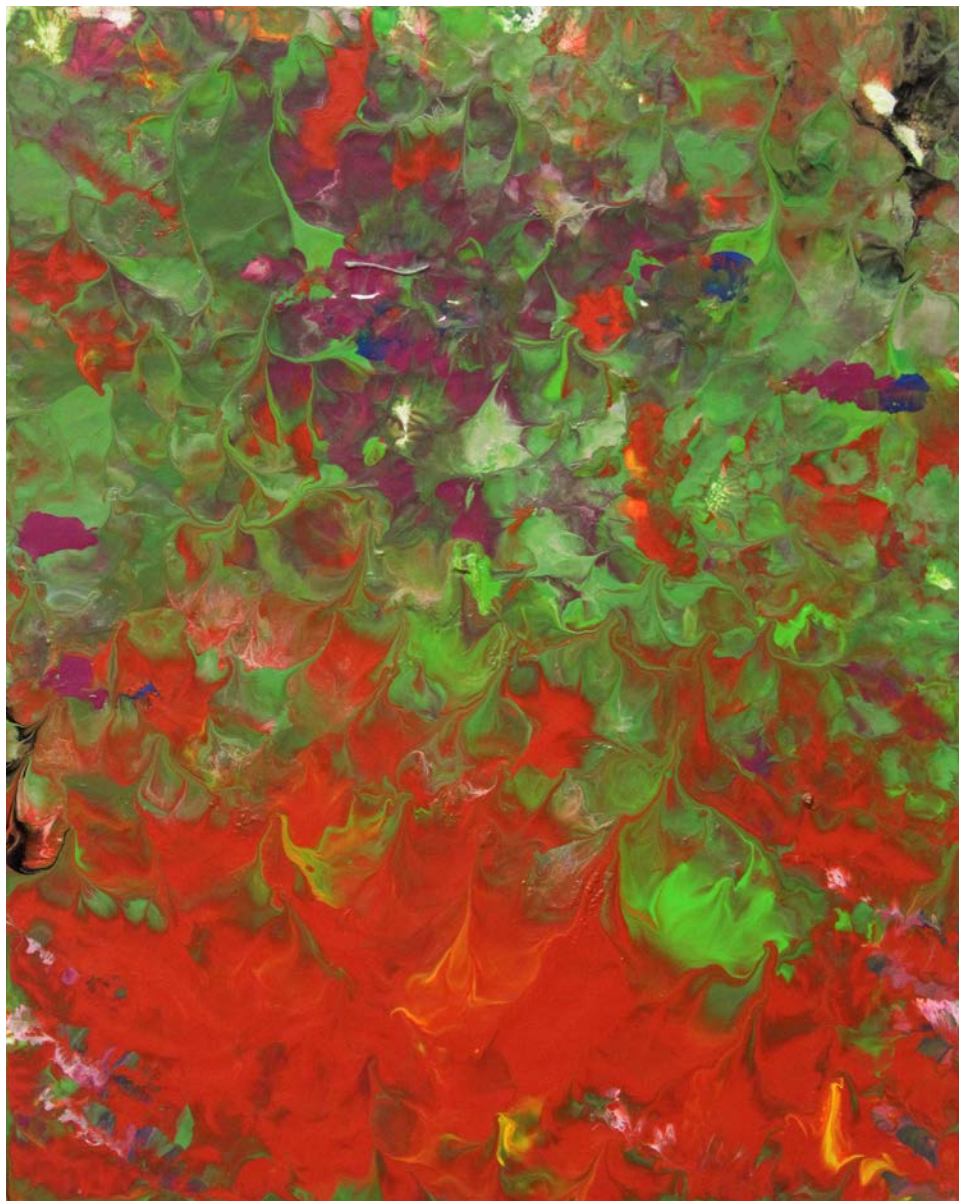


Lisa Tomaszewski



*Cluffalo: Summer 2018 Eighth State, 2018, latex on expanded pvc, 32 x 44 inches*





2018\_07\_29\_01, 2018, latex on expanded pvc, 10 x 8 inches





2018\_07\_29\_02, 2018, latex on expanded pvc, 10 x 8 inches



Andrew Jarzynski



Leah Jarzynski





Nick Grand



Karen Eckert



A.J. Fries





*Cluffalo: Summer 2018 Ninth State, 2018, latex on expanded pvc, 32 x 44 inches*



*2018\_08\_11\_01*, 2018, latex on expanded pvc, 8 x 10 inches





2018\_08\_11\_02, 2018, latex on expanded pvc, 8 x 10 inches



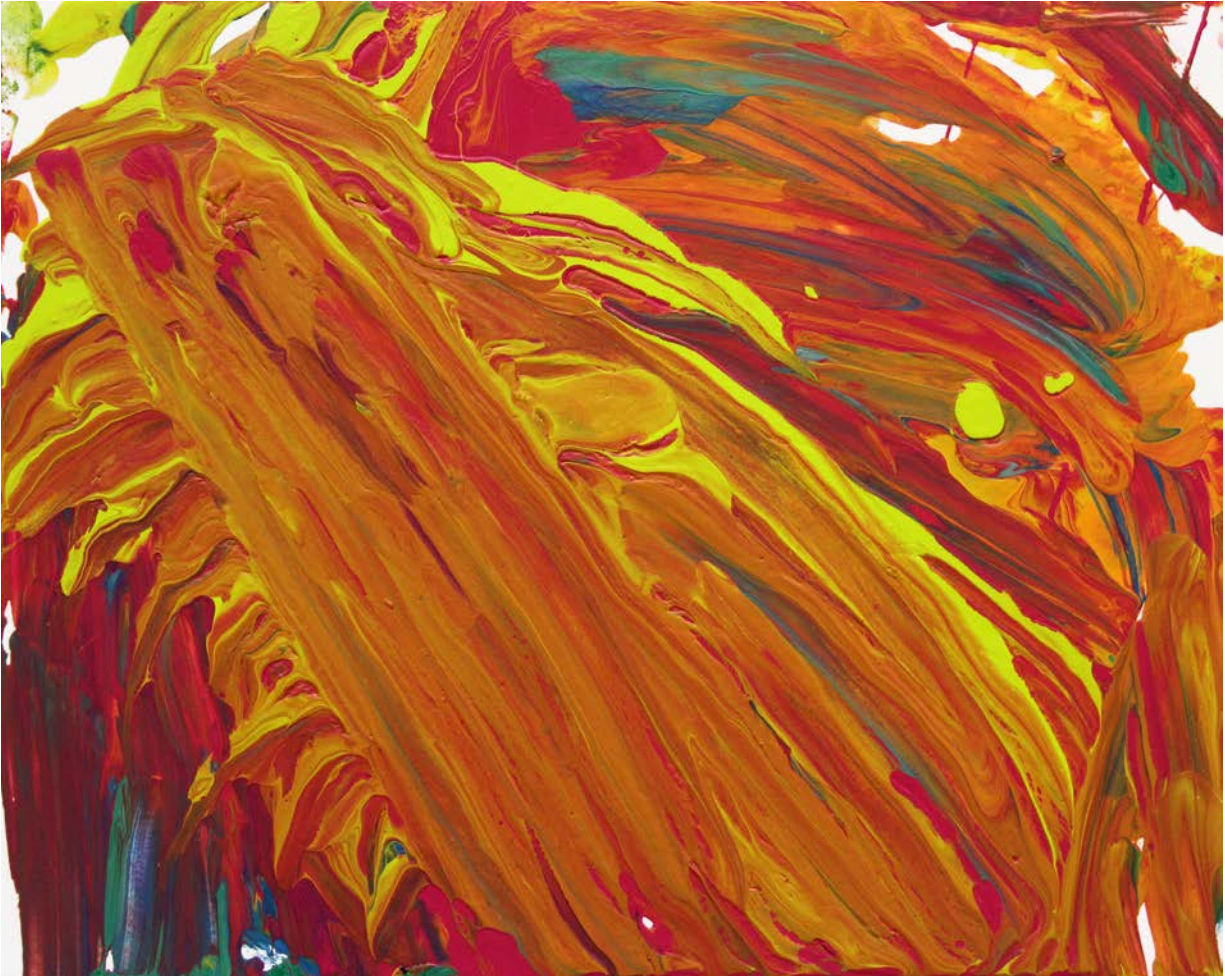


2018\_08\_11\_03, 2018, latex on expanded pvc, 8 x 10 inches



2018\_08\_11\_04, 2018, latex on expanded pvc, 8 x 10 inches





2018\_08\_11\_05, 2018, latex on expanded pvc, 8 x 10 inches





Adam Maffei



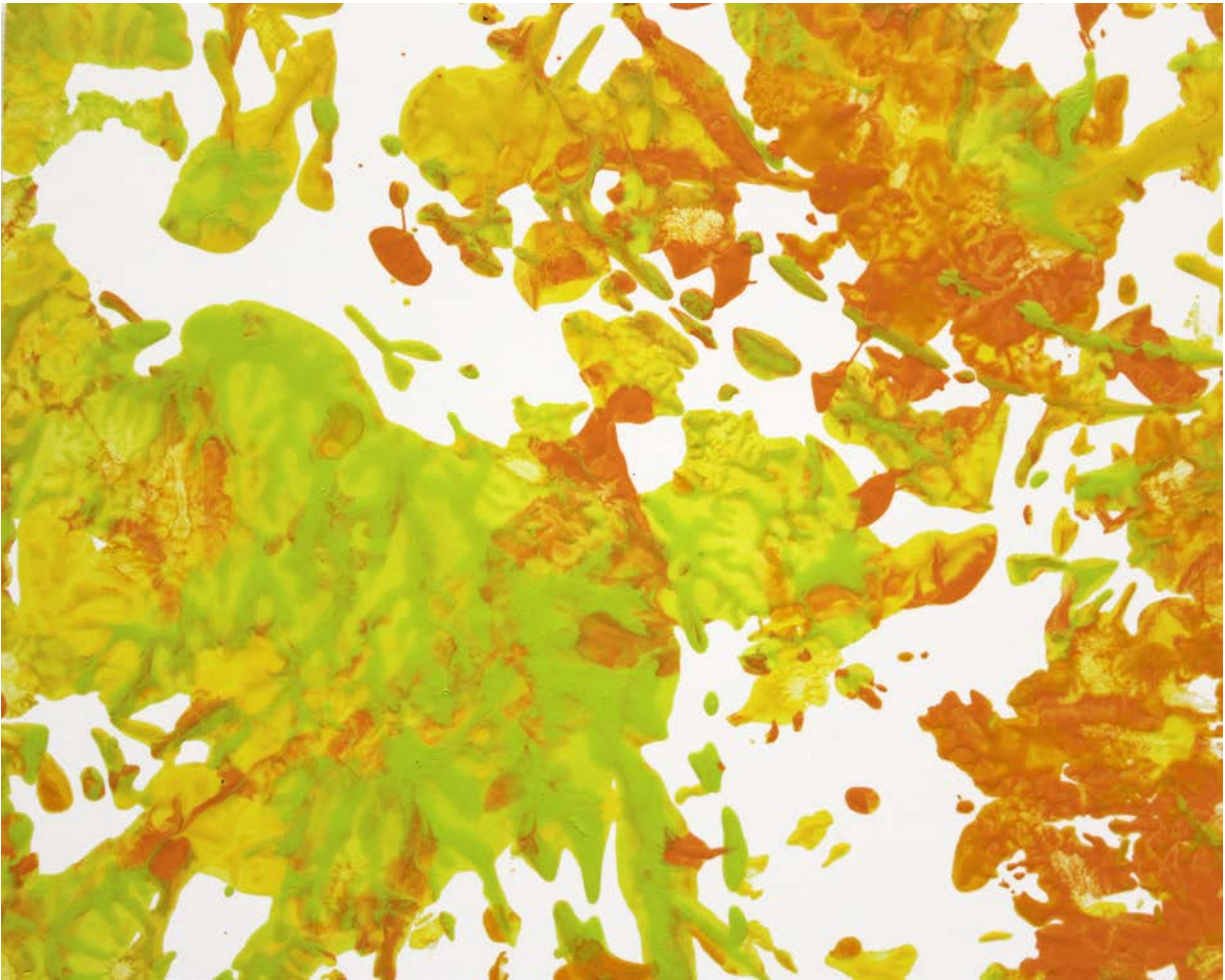
Susan Maffei



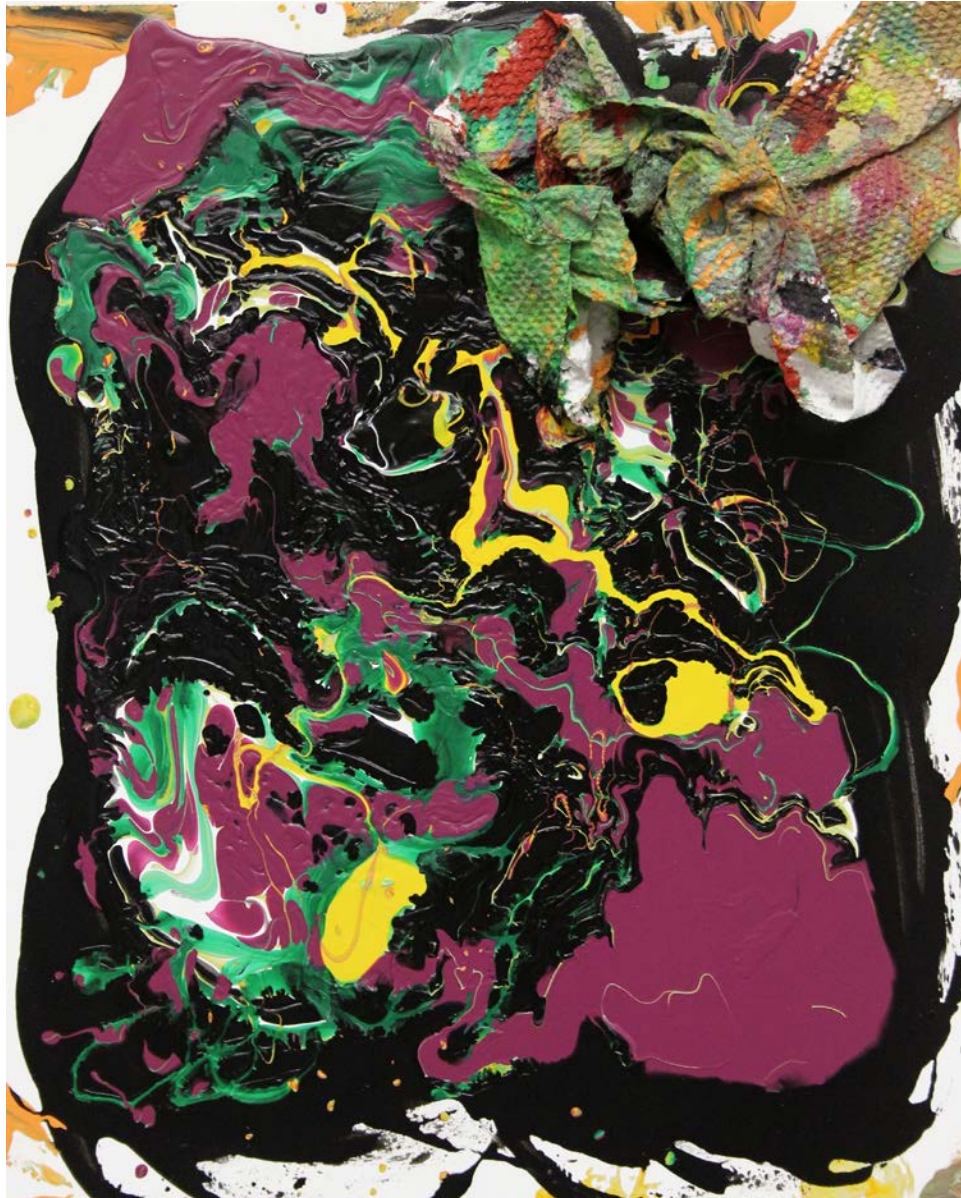


*Cluffalo: Summer 2018 Tenth State, 2018, latex on expanded pvc, 32 x 44 inches*





*2018\_08\_17\_01*, 2018, latex on expanded pvc, 8 x 10 inches



2018\_08\_17\_02, 2018, latex on expanded pvc, 10 x 8 inches



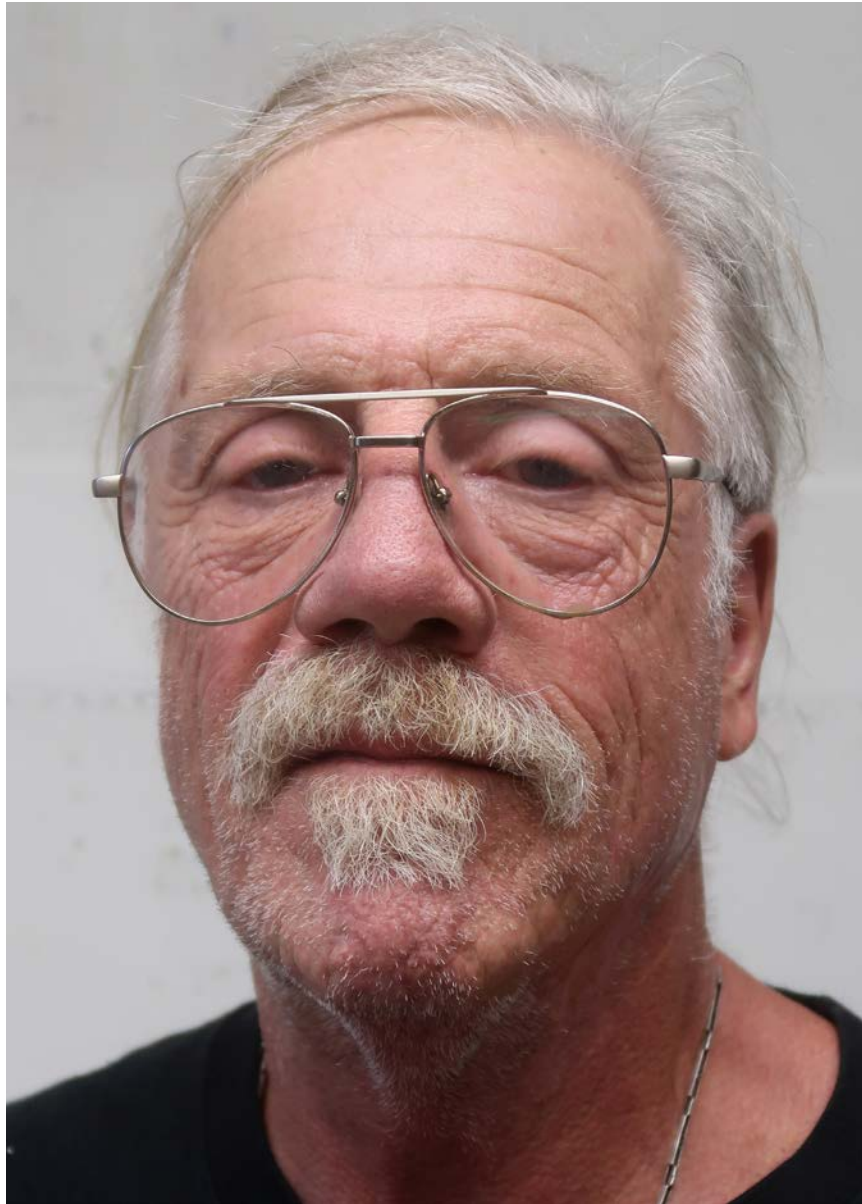


Wendi Dawson





*Cluffalo: Summer 2018 Eleventh State, 2018, latex on expanded pvc, 32 x 44 inches*



Charles Hill



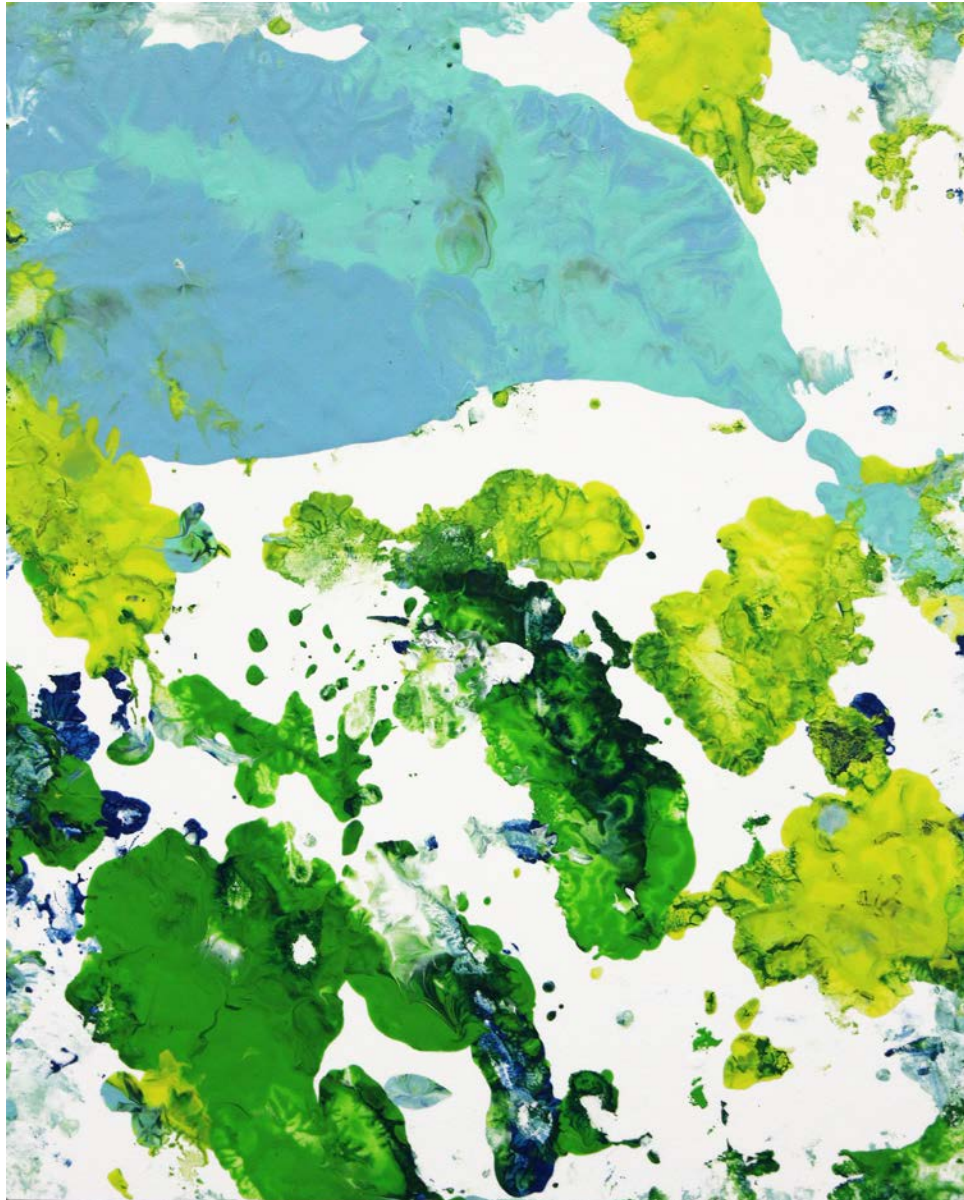


*Cluffalo: Summer 2018 Twelfth State, 2018, latex on expanded pvc, 32 x 44 inches*





2018\_08\_15\_01 2018, latex on expanded pvc, 10 x 8 inches



2018\_08\_15\_02, 2018, latex on expanded pvc, 10 x 8 inches



Kiel Cassety





*Cluffalo: Summer 2018 Thirteenth State, 2018, latex on expanded pvc, 32 x 44 inches*



2018\_08\_19\_01, 2018, latex on expanded pvc, 8 x 10 inches





Isabella Achatz





Chase Achatz



*Cluffalo: Summer 2018 Fourteenth State, 2018, latex on expanded pvc, 32 x 44 inches*



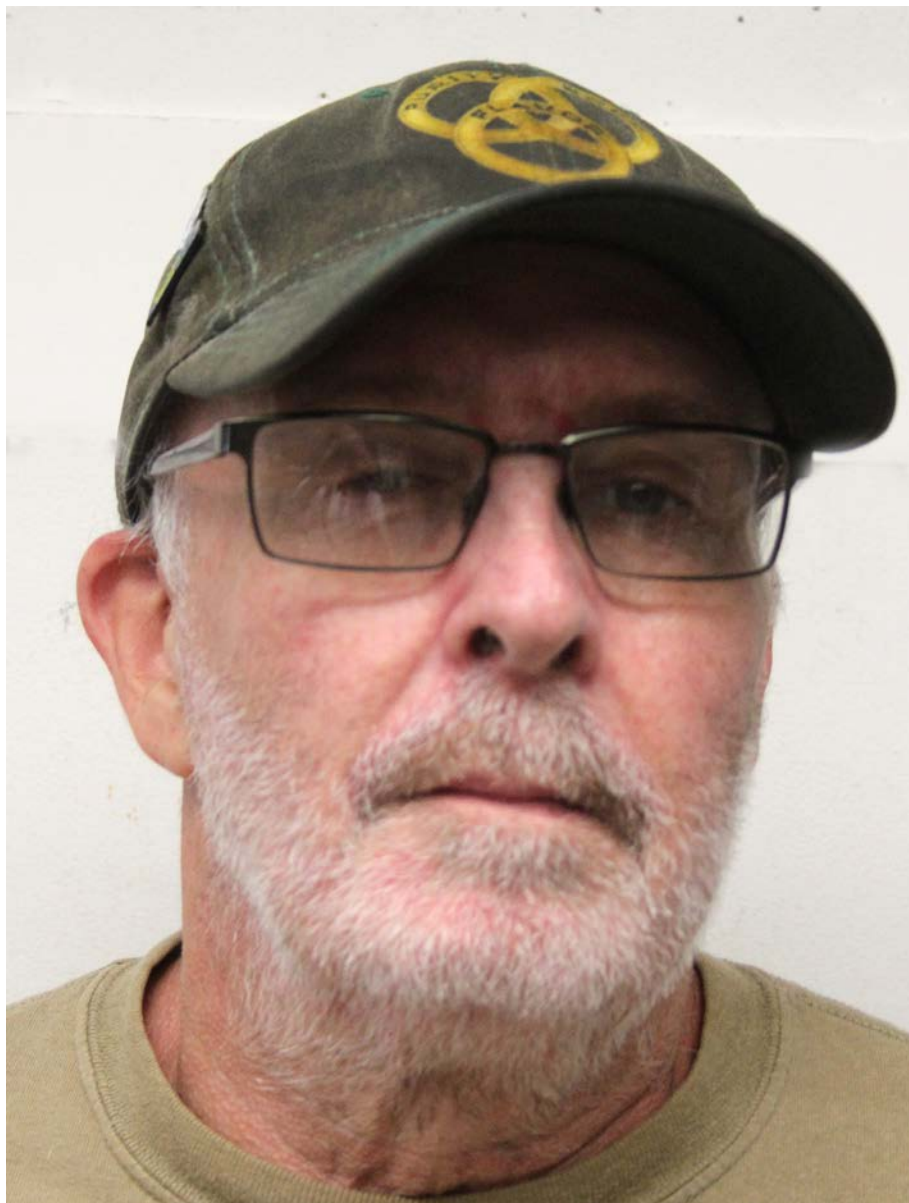


2018\_08\_21\_01, 2018, latex on expanded pvc, 8 x 10 inches





2018\_08\_21\_02, 2018, latex on expanded pvc, 10 x 8 inches



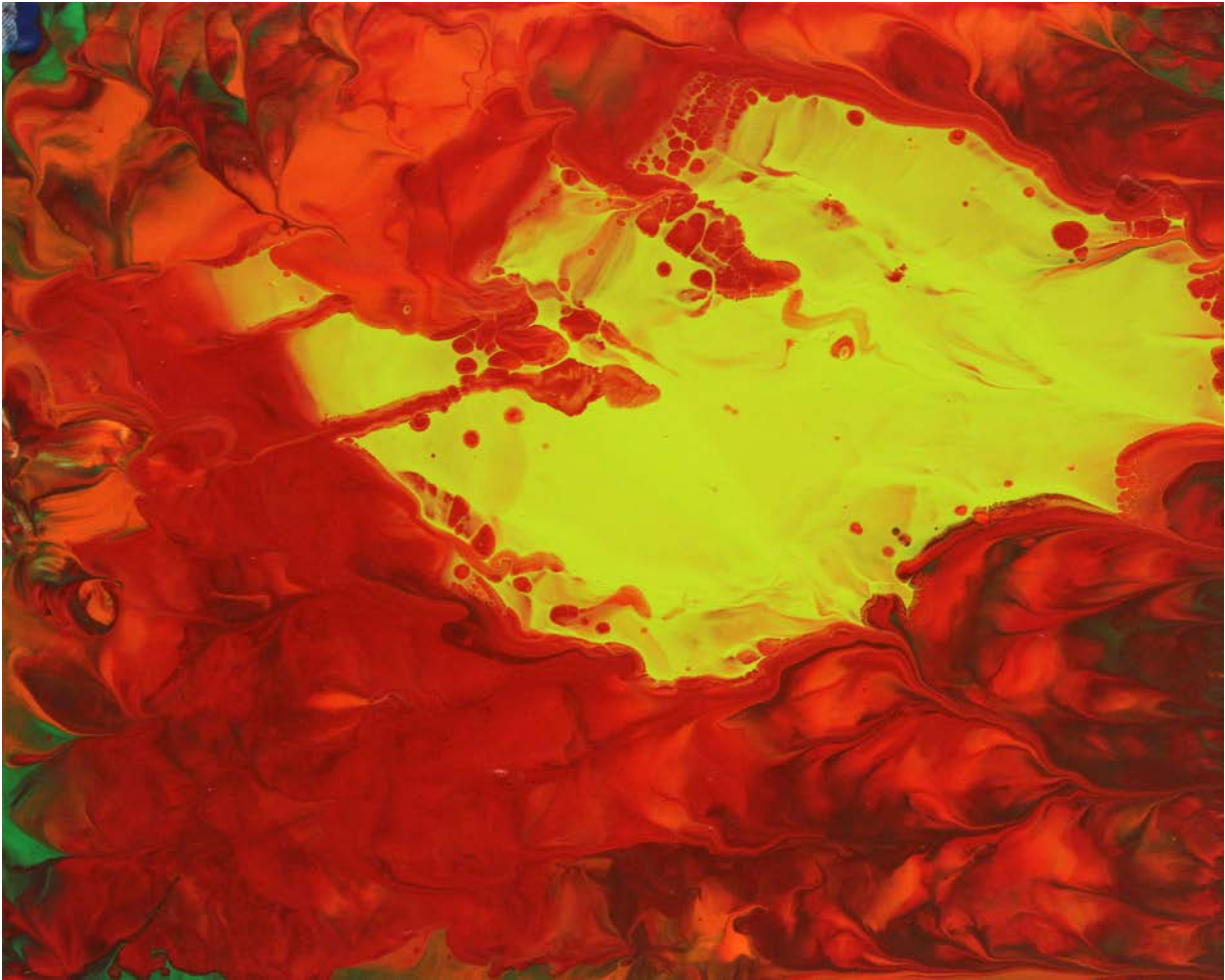
Tom McCrae





*Cluffalo: Summer 2018 Fifteenth State, 2018, latex on expanded pvc, 32 x 44 inches*





2018\_09\_04\_02, 2018, latex on expanded pvc, 8 x 10 inches

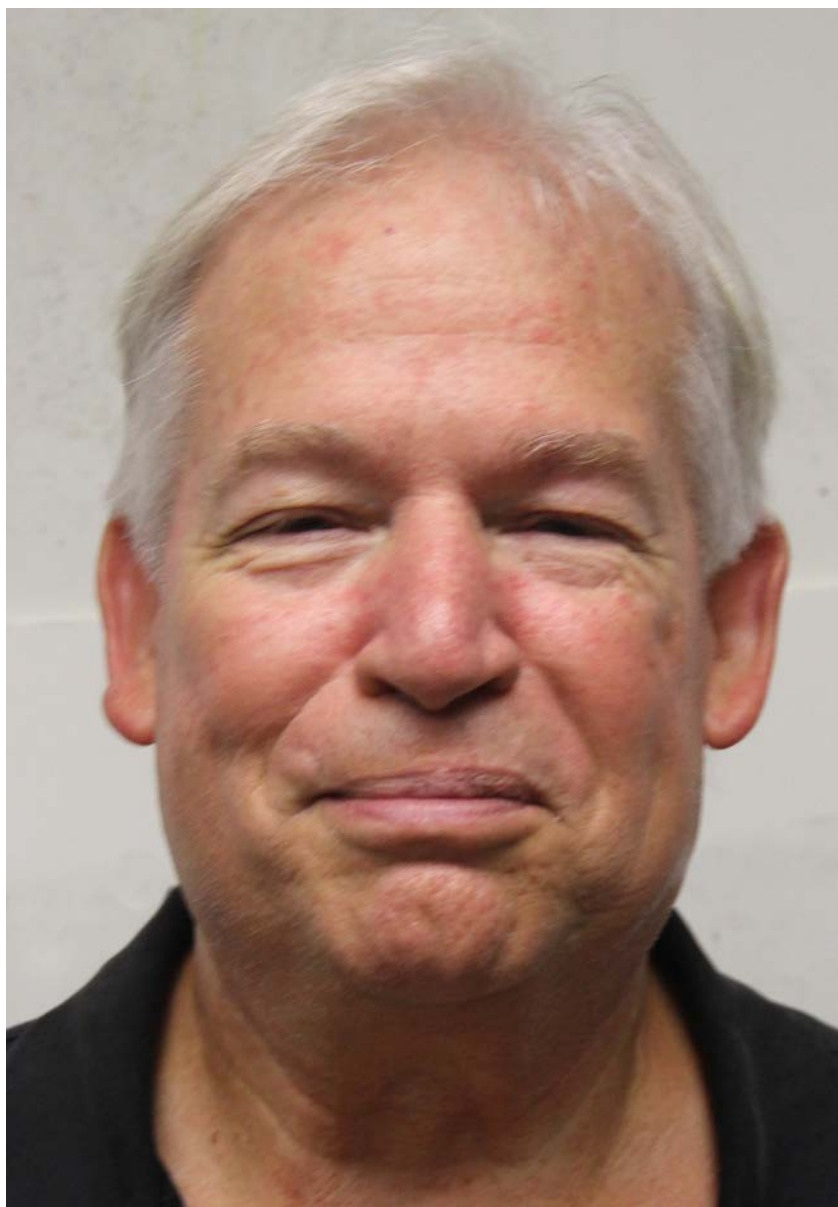


Haley Stewart



Hannah Stewart





Charles Stewart

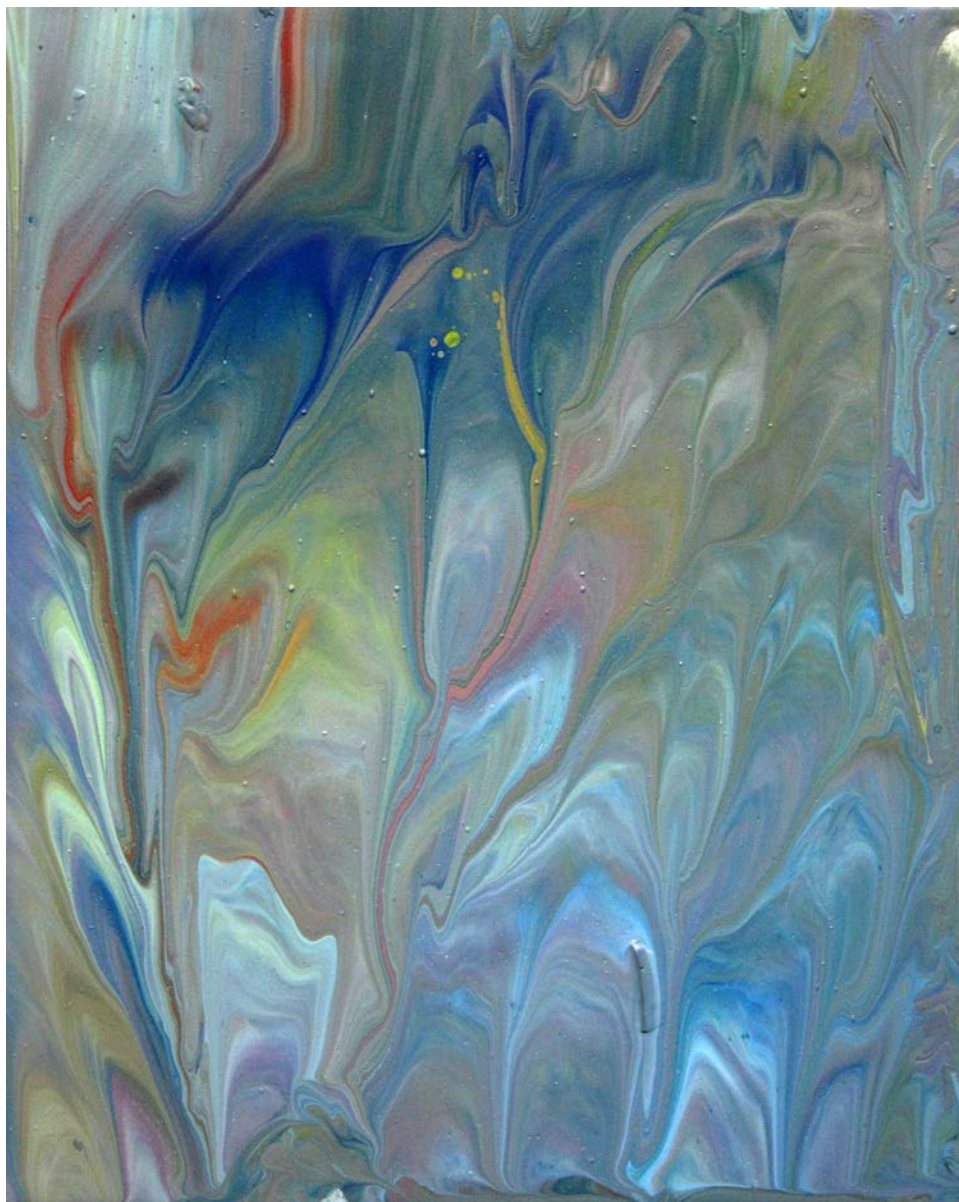


*Cluffalo: Summer 2018 Sixteenth State, 2018, latex on expanded pvc, 32 x 44 inches*



2018\_09\_11\_01, 2018, latex on expanded pvc, 8 x 10 inches





2018\_09\_11\_02, 2018, latex on expanded pvc, 10 x 8 inches



CLUFFFALO: SUMMER 2018  
FINISHED





*Cluffalo: Summer 2018*, 2018, latex on expanded pvc, 32 x 44 inches

