



CHARLES CLOUGH
CLUFFFALO: SUMMER 2019

I established the Cluffalo Institute in 2012 to manage my archive
and collection and to promote and administer the Painting
Workshop at the Roycroft in East Aurora, New York.

Cluffalo: Summer 2019

Here are the painters, states of the painting and mono-print take-aways made in
The Print Shop at The Roycroft in the Summer of 2019.

ISBN: 978-0-359-92774-6

© Charles Clough 2019

www.cluff.com

Cover: *Cluffalo: Summer 2019*, 2019, latex on expanded pvc, 32 x 44 inches

There are three kinds of Clufffaloes: *Clufffaloes: Seasons*, made by all who wish to participate, only at the Roycroft in East Aurora, New York; *Places*, such as *Clufffalo: Hamburg* commissioned by the Albright-Knox Art Gallery and Erie County PublicArt initiative, painted by 150 participants and hanging in the Hamburg, New York Public Library as part of the Albright-Knox's permanent collection; and *Numbers*, painted by me, alone.

The Clufffalo Painting Workshop at the Roycroft began on September 21st, 2015. Since then, and including the subject of this book, sixteen *Seasons* paintings have been completed by more than 500 participants in more than 250 sessions.

I provide the space of the workshop, tools and materials, my time and encouragement and freedom, such as it is limited by gravity, viscosity and drying time, for the participants to engage the experience. Through the course of each season the layers of paint accrue and the participants paint their take-aways and “be” within a transformative creative moment. At the end of the season I gouge to open the layers onto each other and give the painting its characteristic look to finish the painting in a manner that fulfills my aesthetic.

The project includes whoever wants to participate, so please make an appointment to paint and share the news of this cultural experiment. Although only one session can happen per day, the project is always “on”. This book follows a format of the participant(s), their state of *Clufffalo: Summer 2019* and then their take-away paintings.

“Thank you so much for sharing your space and artistic process with the four of us on Monday August 19th. There is something truly connecting about collaborative art making : the interaction in the moment and the lasting affect. Not just between the group on a given day but also between other unknown participants in one of your seasonal painting. And for that matter, a consecutiveness within all of your participants - an art community. We felt so lucky to have spent that afternoon with you in your studio among your works, rocks, books, paints, and “brushes”. A wonderful 2019 Summer memory”.

Sincerely,

Susan, Wendy, Nancy and Andrea.

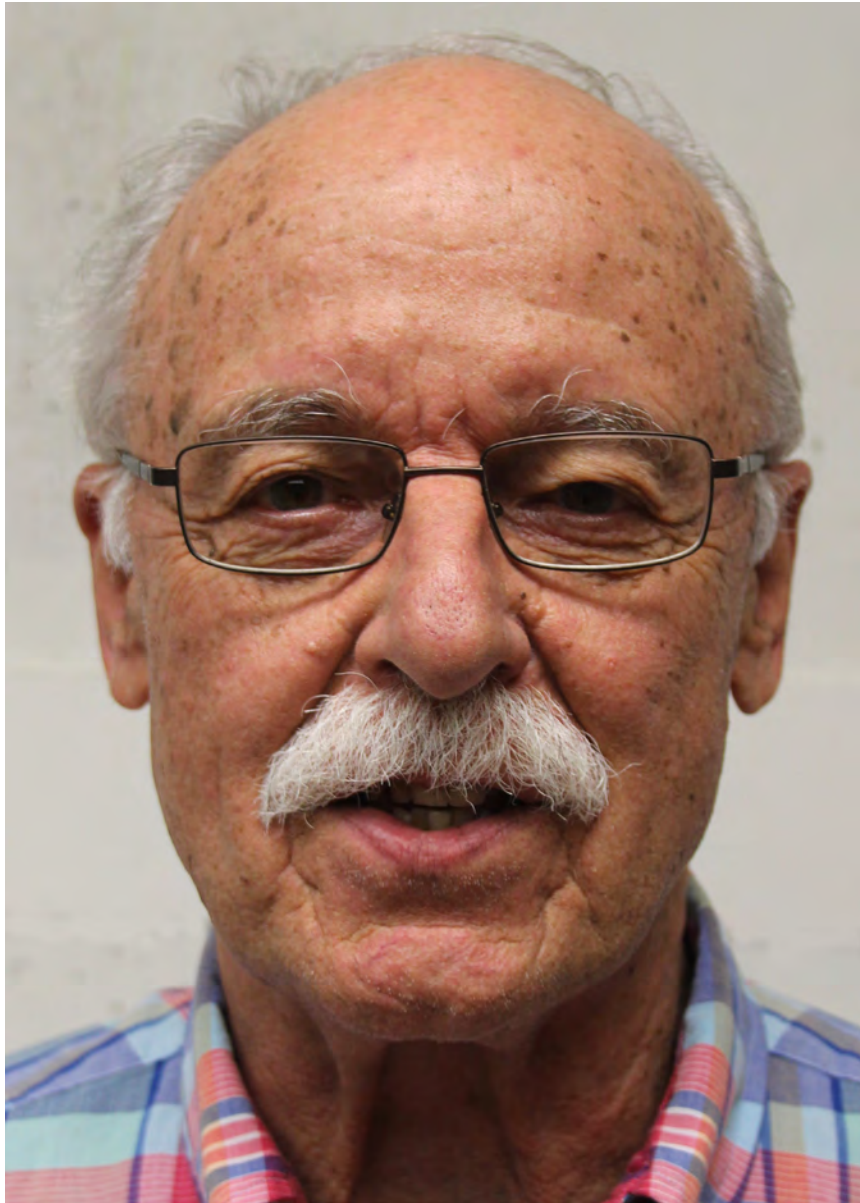
—Charles Clough, September 21, 2019



Jason Tillman



Ann Tillman



George Hezel



Cluffalo: Summer 2019 First State, 2019, latex on expanded pvc, 32 x 44 inches



2019_06_21_01, 2019, latex on expanded pvc, 8 x 10 inches



2019_06_21_02, 2019, latex on expanded pvc, 8 x 10 inches



2019_06_21_03, 2019, latex on expanded pvc, 8 x 10 inches



Louise Pierce



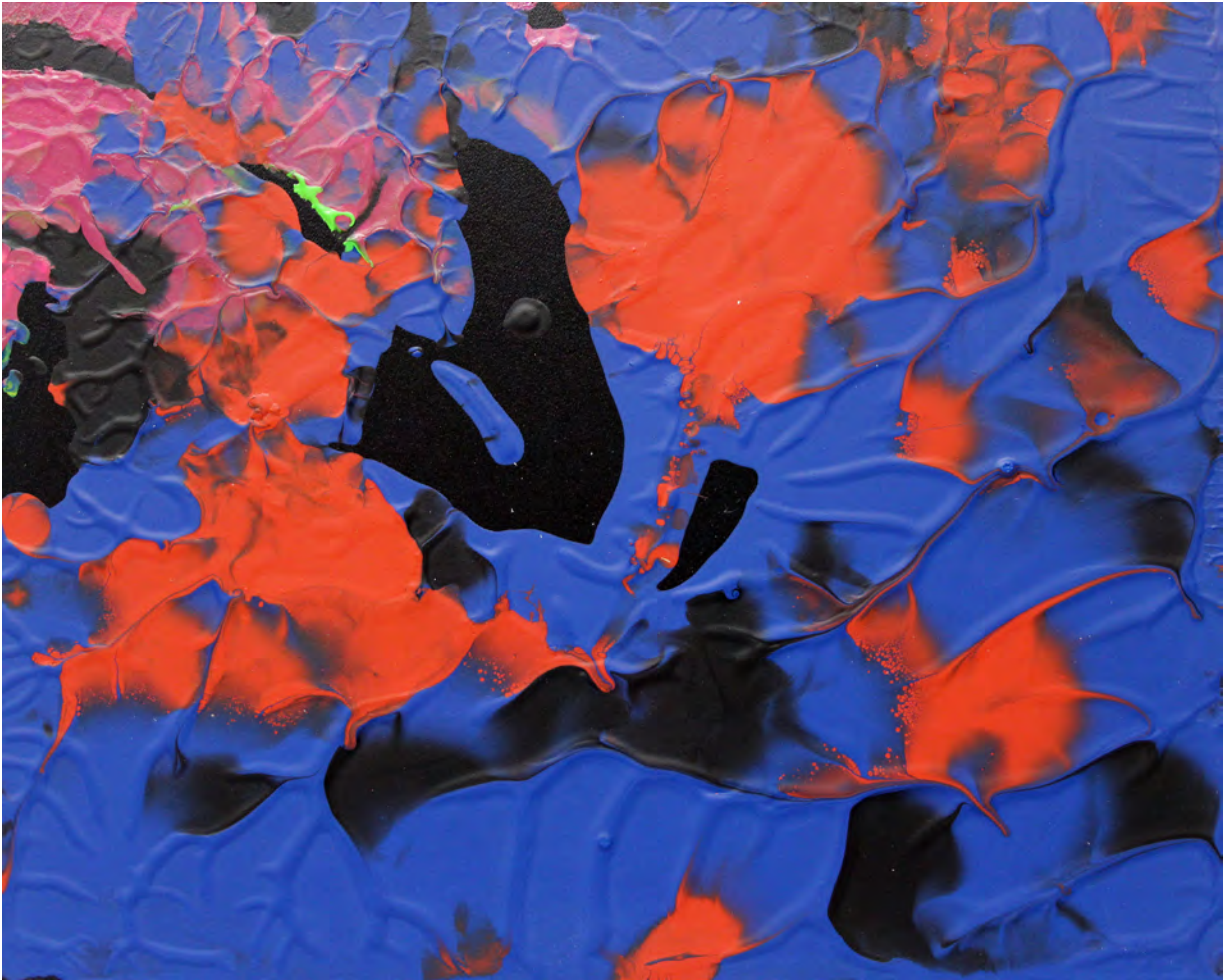
Matt Griffin



Cluffalo: Summer 2019 Second State, 2019, latex on expanded pvc, 32 x 44 inches



2019_06_22_01, 2019, latex on expanded pvc, 8 x 10 inches



2019_06_22_02, 2019, latex on expanded pvc, 8 x 10 inches



Dana Hogan



John Mackessy



Nancy Karp



Sally Hezel



Cluffalo: Summer 2019 Third State, 2019, latex on expanded pvc, 32 x 44 inches



2019_06_23_01, 2019, latex on expanded pvc, 8 x 10 inches



2019_06_23_02, 2019, latex on expanded pvc, 8 x 10 inches



2019_06_23_03 2019, latex on expanded pvc, 8 x 10 inches



Judy Weidemann



Lisa Lawson



Amy Taylor



Andrea Holden



Lucy LaPlaca



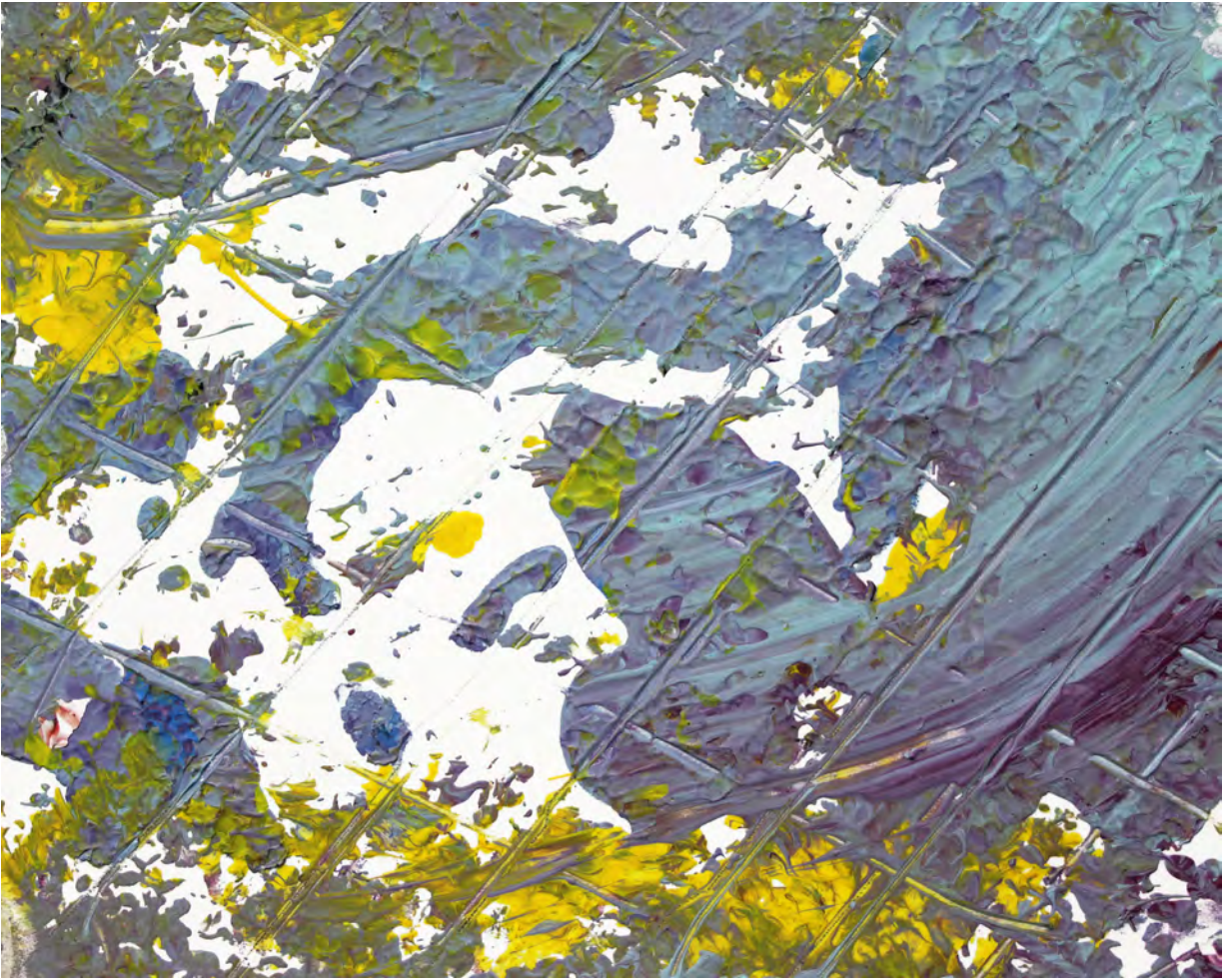
Mary Kozub



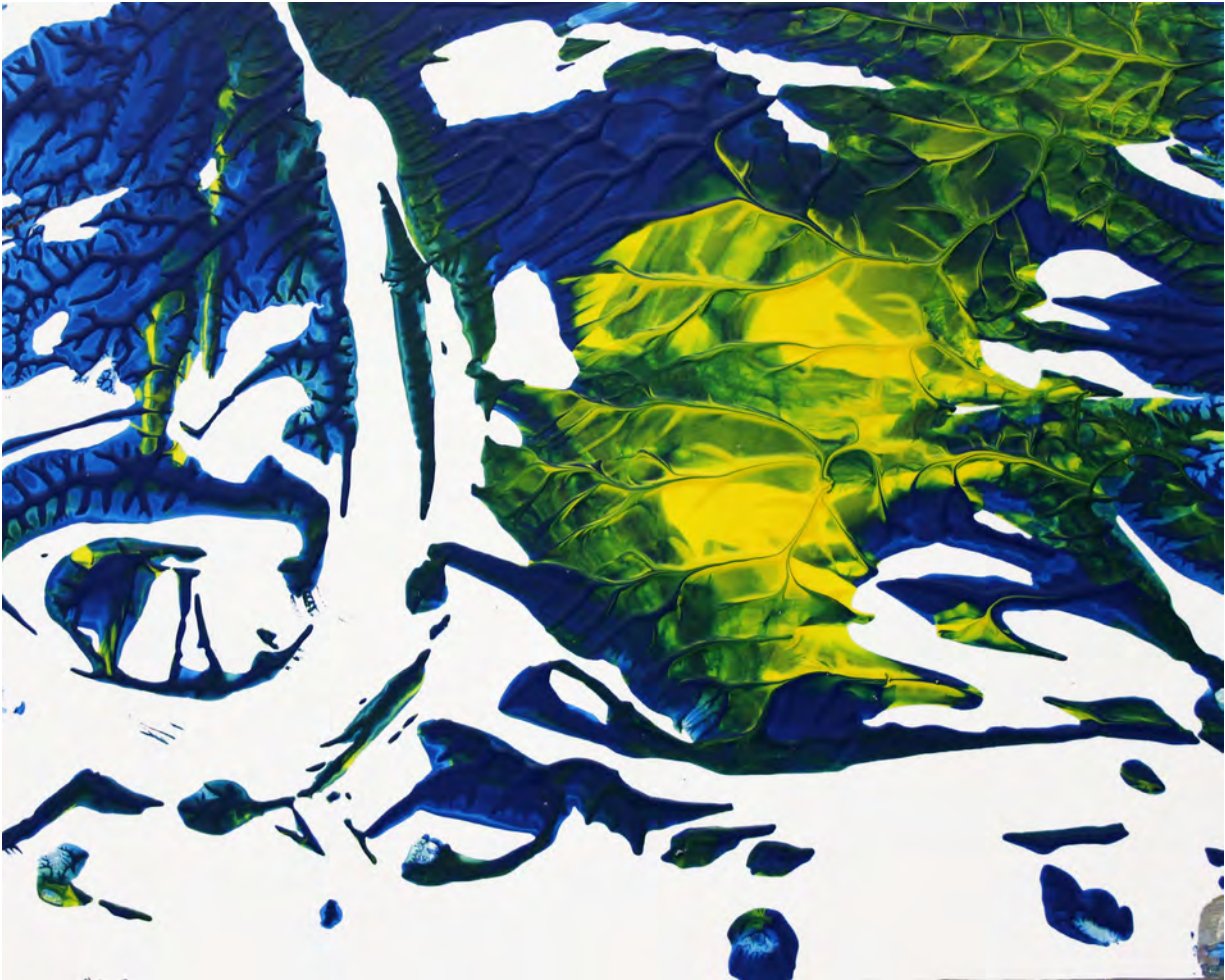
Thomas C. Sheedy



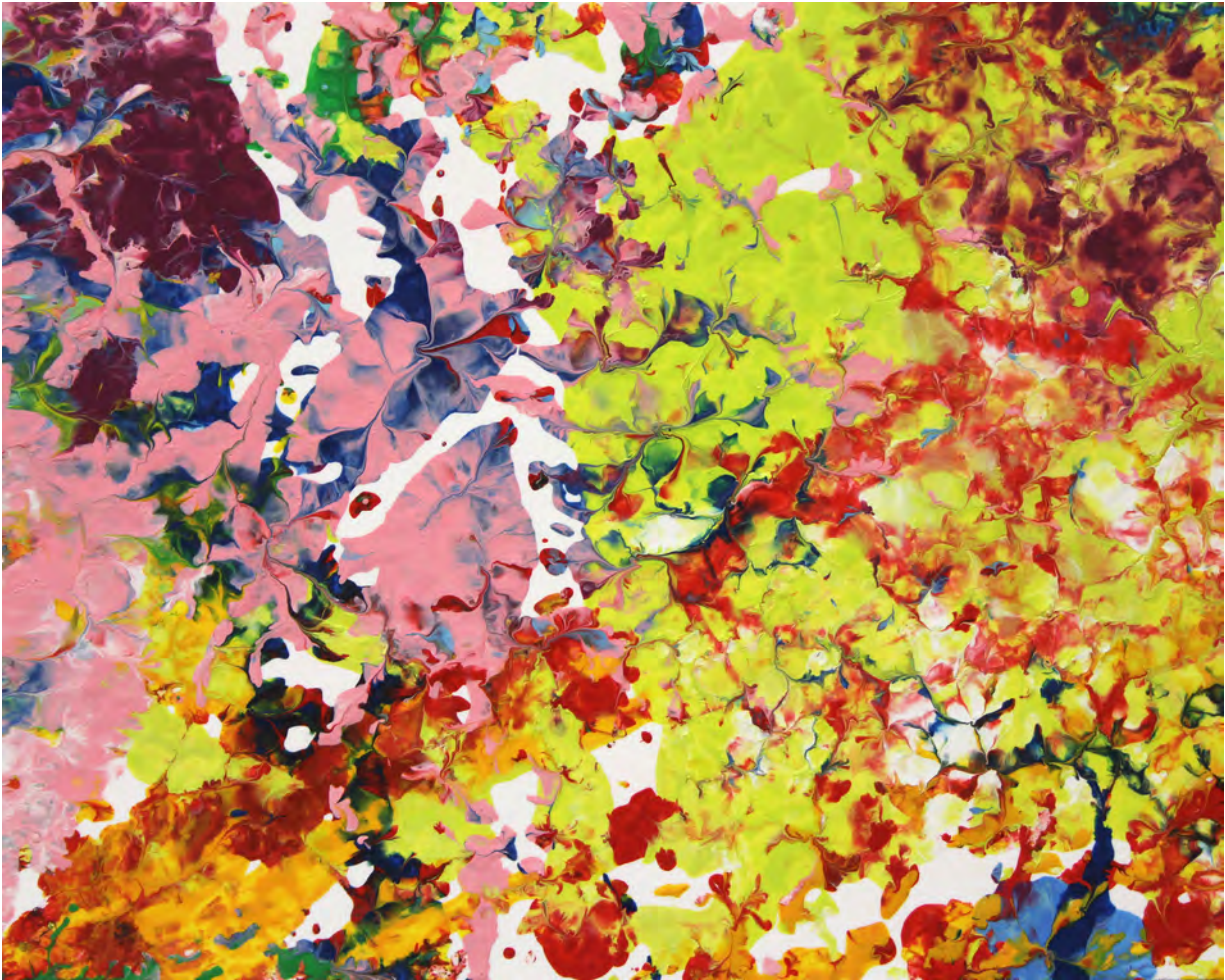
Cluffalo: Spring 2019 Fourth State, 2019, latex on expanded pvc, 32 x 44 inches



2019_06_25_01, 2019, latex on expanded pvc, 8 x 10 inches



2019_06_25_02, 2019, latex on expanded pvc, 8 x 10 inches



2019_06_25_03, 2019, latex on expanded pvc, 8 x 10 inches



2019_06_25_04, 2019, latex on expanded pvc, 8 x 10 inches



2019_06_25_05, 2019, latex on expanded pvc, 8 x 10 inches



2019_06_25_06, 2019, latex on expanded pvc, 8 x 10 inches



2019_06_25_07, 2019, latex on expanded pvc, 8 x 10 inches



2019_06_25_08, 2019, latex on expanded pvc, 8 x 10 inches



2019_06_25_09, 2019, latex on expanded pvc, 8 x 10 inches



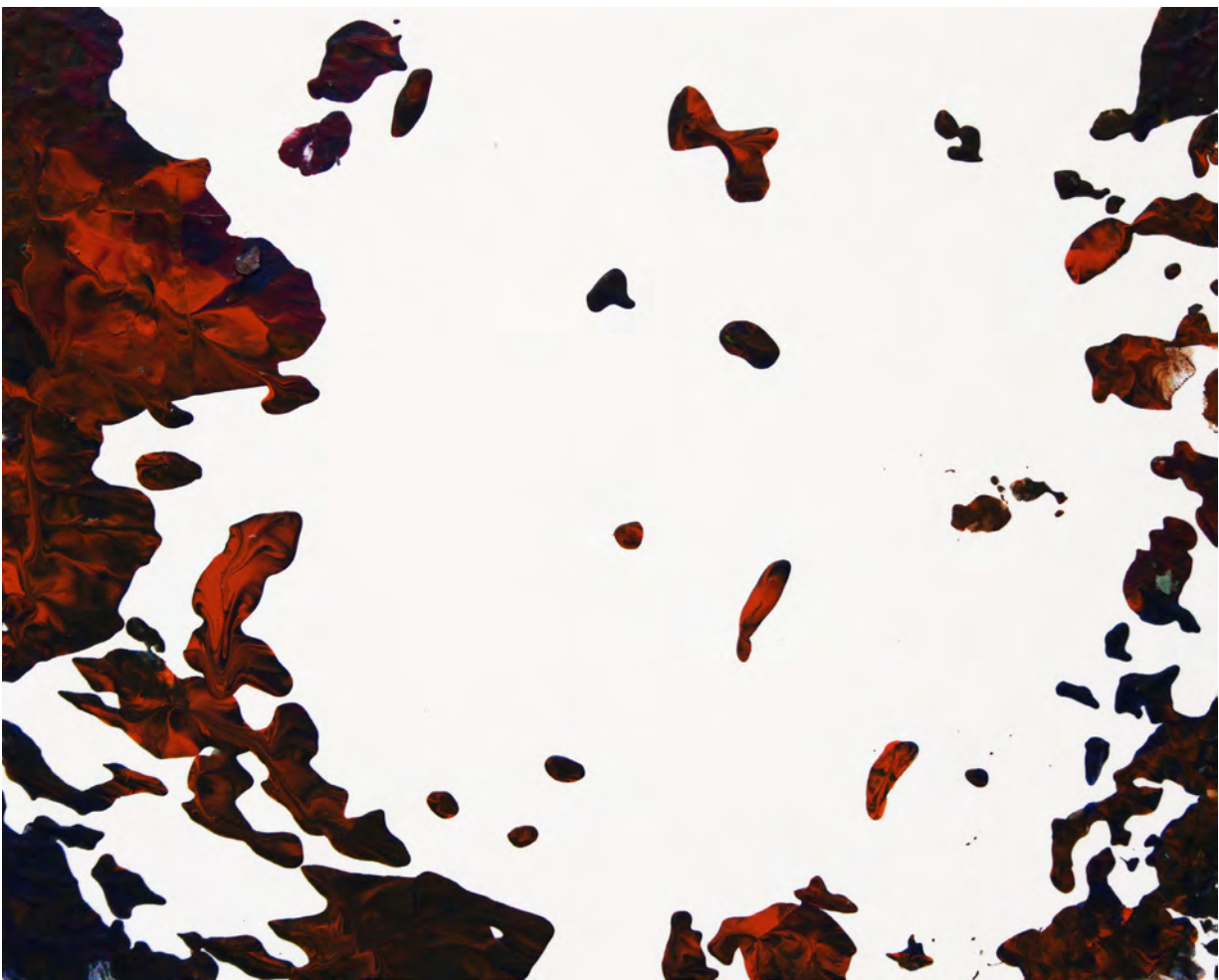
Carol Borom



Debbi Zamrock



Cluffalo: Summer 2019 Fifth State, 2019, latex on expanded pvc, 32 x 44 inches



2019_07_01_01, 2019, latex on expanded pvc, 8 x 10 inches



2019_07_01_02, 2019, latex on expanded pvc, 8 x 10 inches



Lauren Stacy Romano



John Holmes



Cluffalo: Summer 2019 Sixth State, 2019, latex on expanded pvc, 32 x 44 inches



2019_07_03_01, 2019, latex on expanded pvc, 10 x 8 inches



2019_07_03_02, 2019, latex on expanded pvc, 8 x 10 inches



Colleen Galloway



Ann Paulk



Nan Boone



Michael Porter



Mark Hawn



Jeremy Lipois



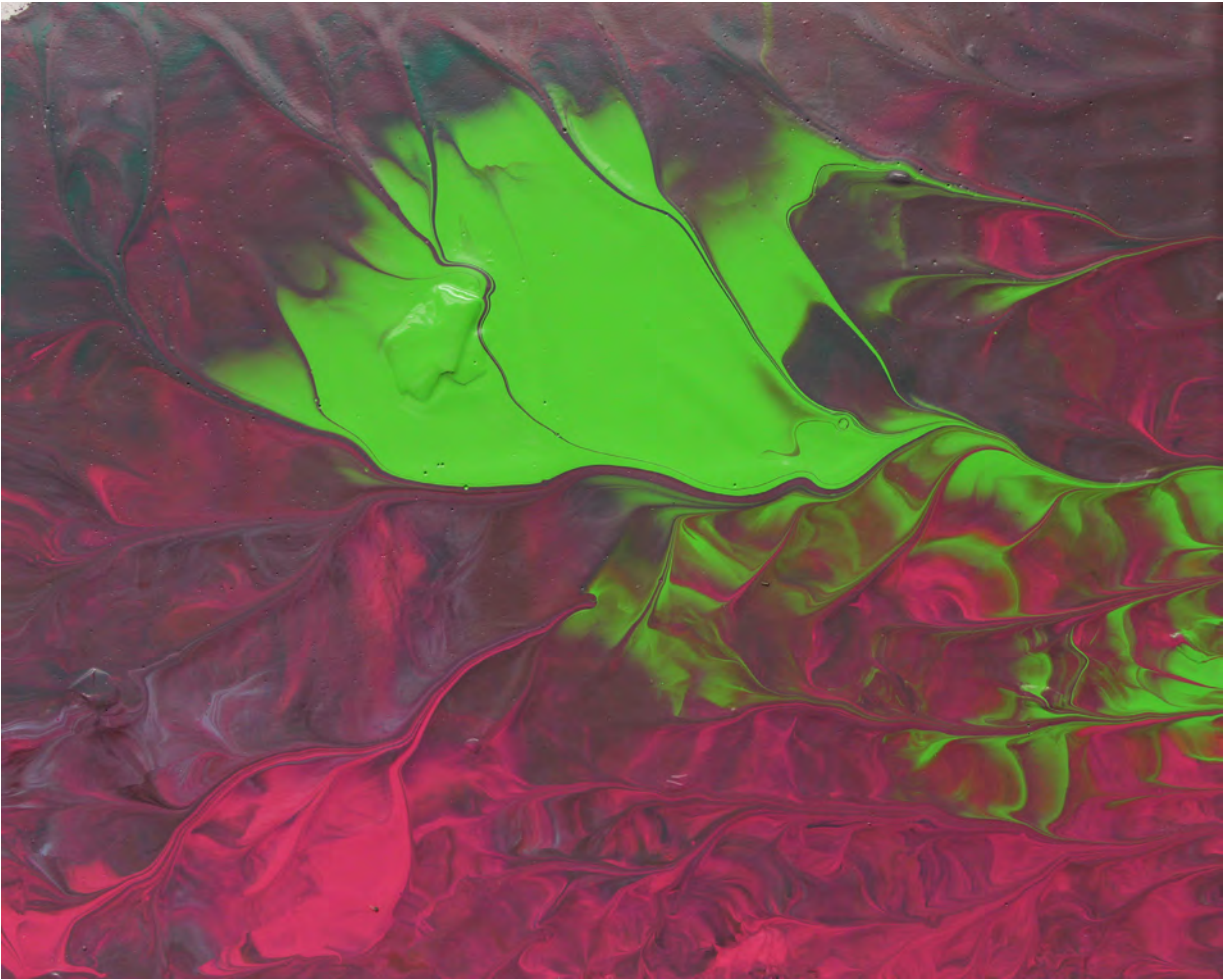
Kaity Tuohy



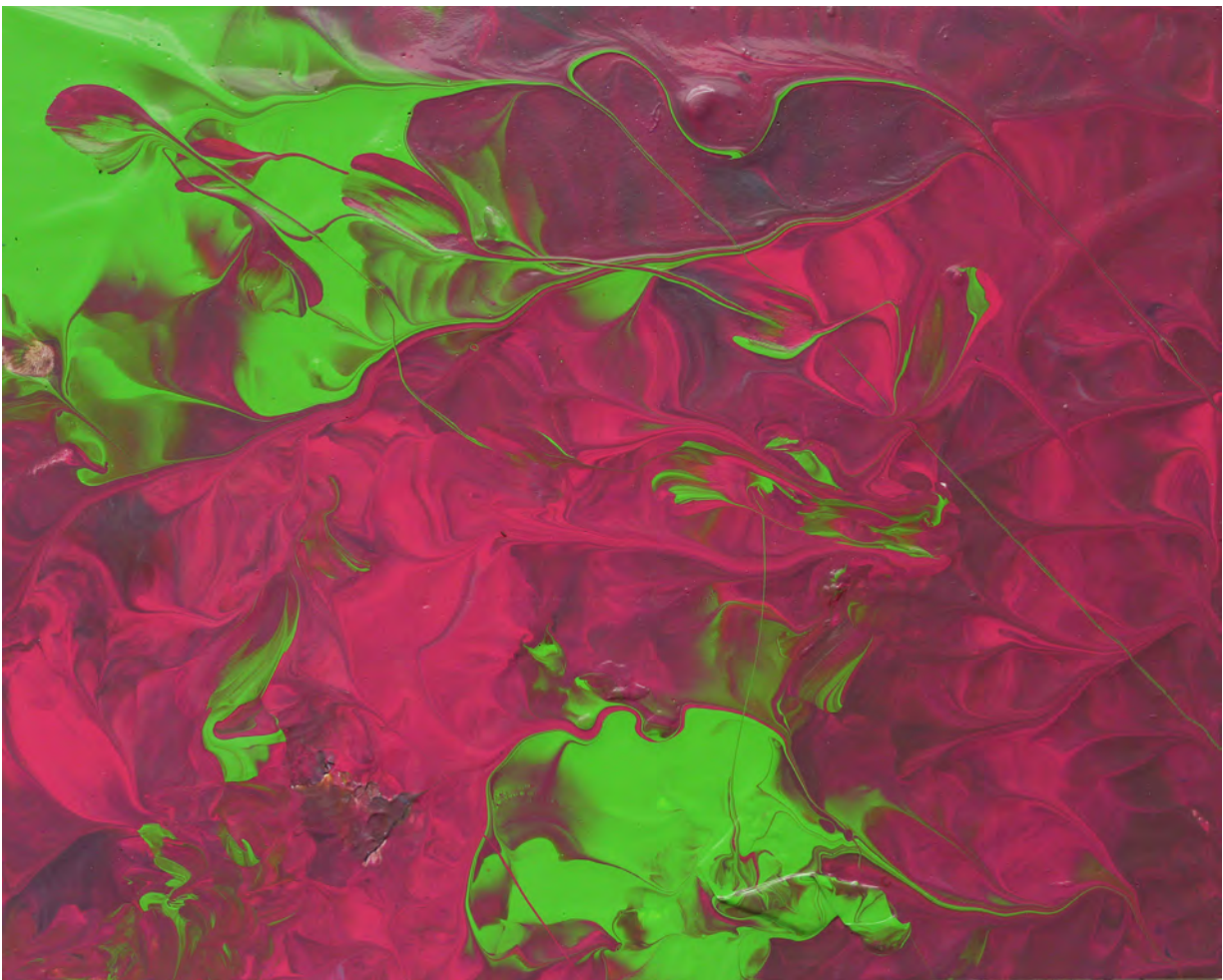
Cluffalo: Summer 2019 Seventh State, 2019, latex on expanded pvc, 32 x 44 inches



2019_07_22_01, 2019, latex on expanded pvc, 8 x 10 inches



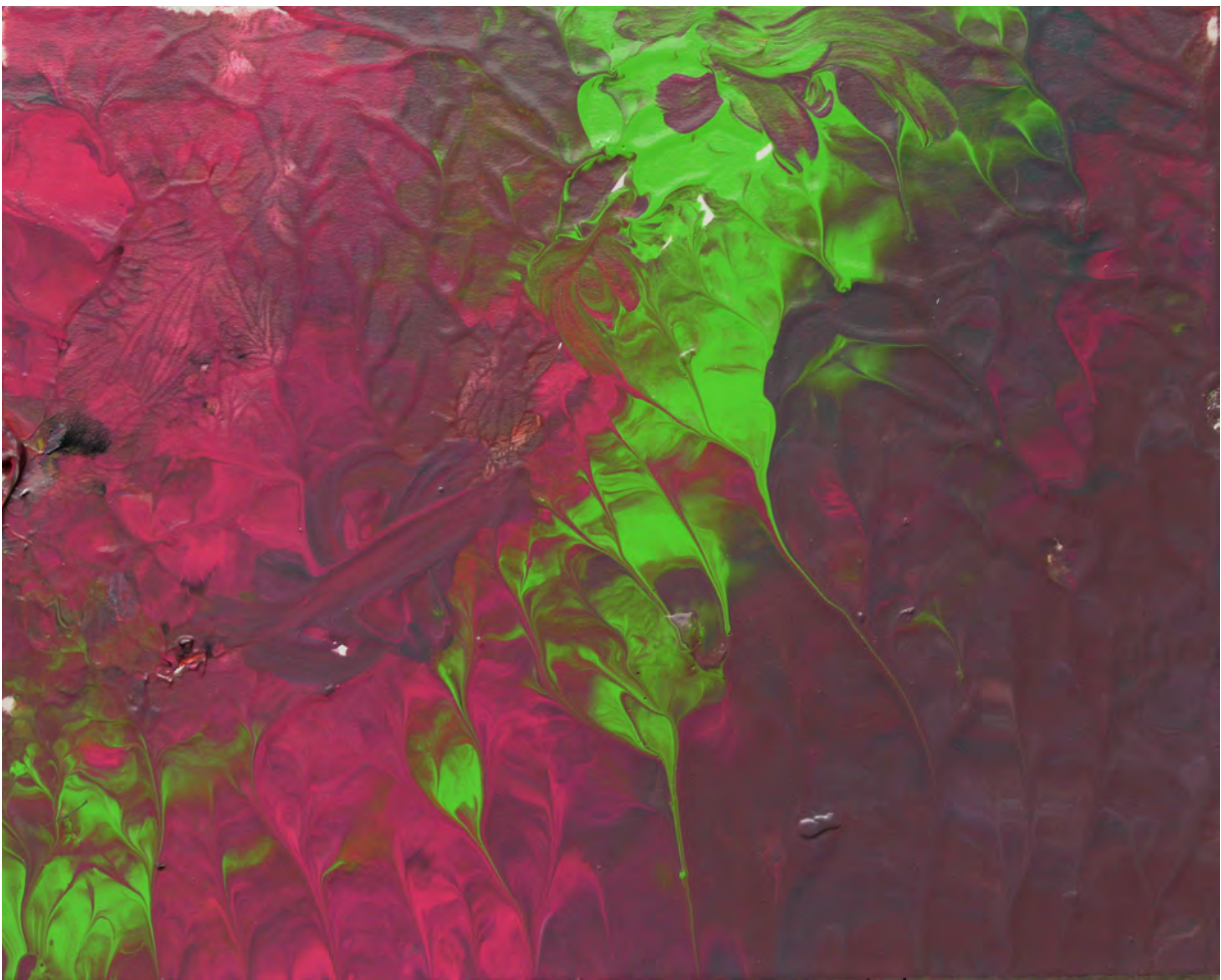
2019_07_22_02, 2019, latex on expanded pvc, 8 x 10 inches



2019_07_22_03, 2019, latex on expanded pvc, 8 x 10 inches



2019_07_22_04, 2019, latex on expanded pvc, 8 x 10 inches



2019_07_22_05, 2019, latex on expanded pvc, 8 x 10 inches



2019_07_22_06, 2019, latex on expanded pvc, 8 x 10 inches



Janet Garwood



Cluffalo: Summer 2019 Eighth State, 2019, latex on expanded pvc, 32 x 44 inches



Luke Schaefer



Monica Rohel



Cluffalo: Summer 2019 Ninth State, 2019, latex on expanded pvc, 32 x 44 inches



Cyndi Brenner



Tom Kicki



Cluffalo: Summer 2019 Tenth State, 2019, latex on expanded pvc, 32 x 44 inches



2019_08_09_01, 2019, latex on expanded pvc, 8 x 10 inches



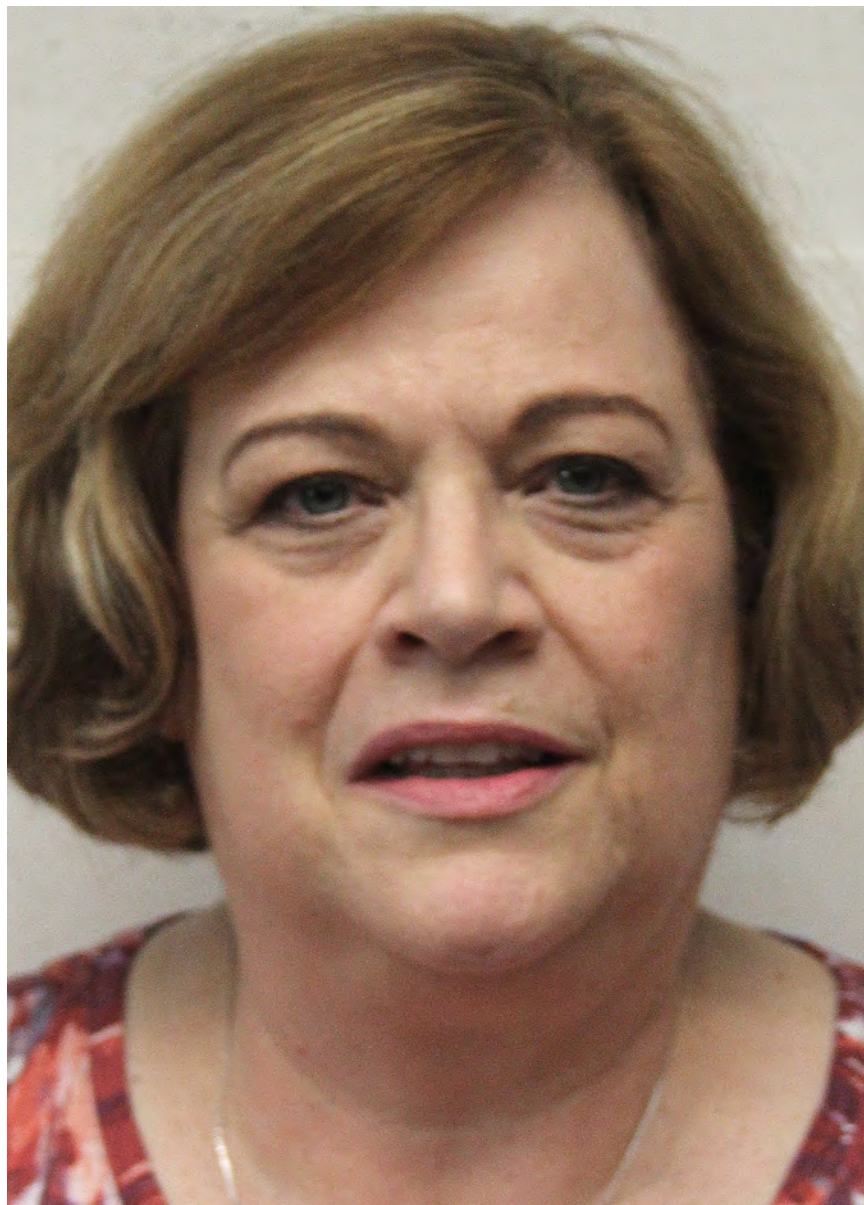
2019_08_09_02, 2019, latex on expanded pvc, 8 x 10 inches



Susan Weber



Wendy Polimeni



Nancy Cich



Andrea Holden



Cluffalo: Summer 2019 Eleventh State, 2019, latex on expanded pvc, 32 x 44 inches



2019_08_19_01, 2019, latex on expanded pvc, 10 x 8 inches



2019_08_19_02, 2019, latex on expanded pvc, 8 x 10 inches



2019_08_19_03, 2019, latex on expanded pvc, 8 x 10 inches



2019_08_19_04, 2019, latex on expanded pvc, 8 x 10 inches



Peter Hezel



Oliver Hezel



Julian Hezel



Paul Hezel



Cluffalo: Summer 2019 Twelfth State, 2019, latex on expanded pvc, 32 x 44 inches



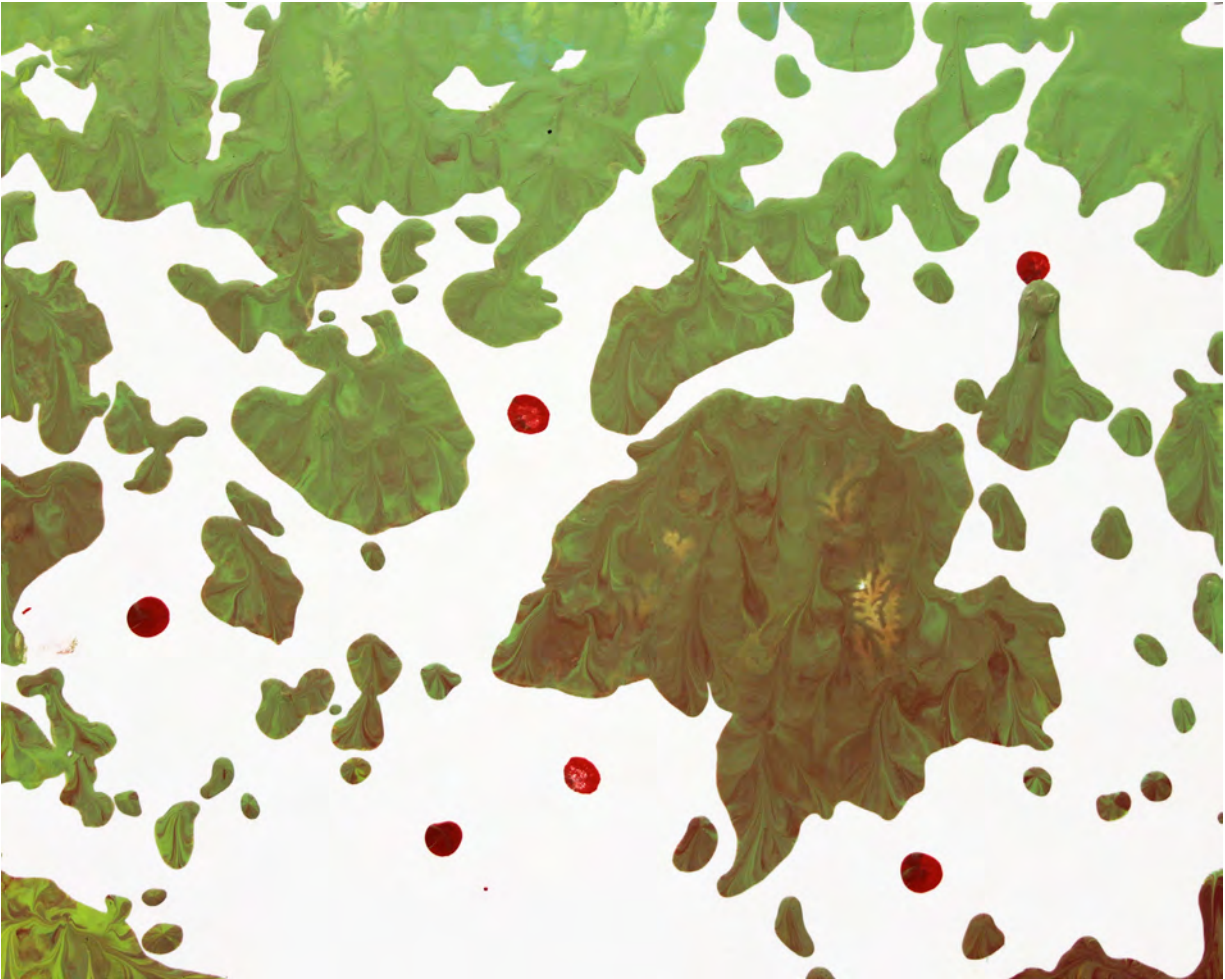
2019_08_24_01, 2019, latex on expanded pvc, 8 x 10 inches



2019_08_24_02, 2019, latex on expanded pvc, 8 x 10 inches



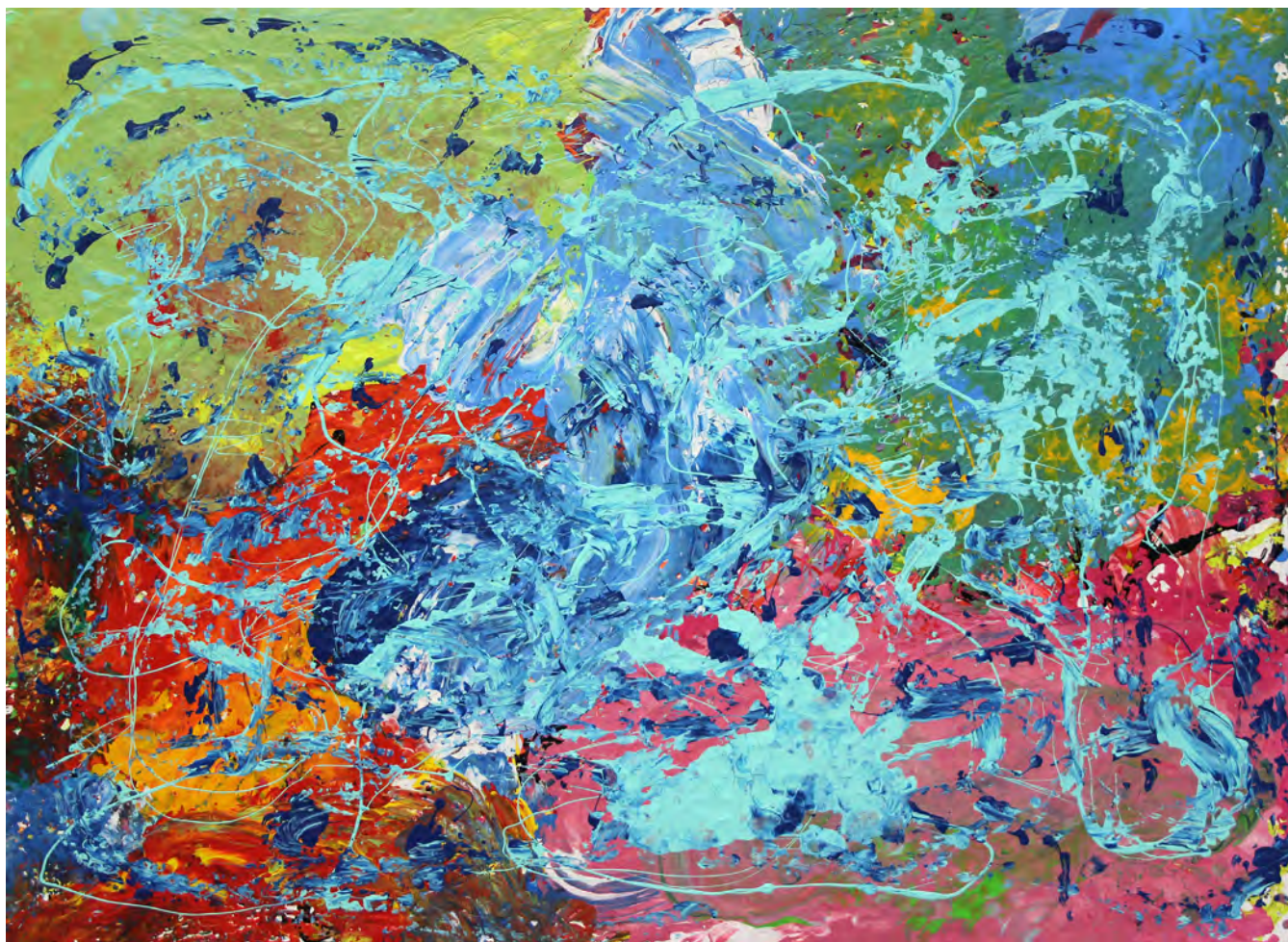
2019_08_24_03, 2019, latex on expanded pvc, 8 x 10 inches



2019_08_24_04, 2019, latex on expanded pvc, 8 x 10 inches



Patiricia B. Evans



Cluffalo: Summer 2019 Thirteenth State, 2019, latex on expanded pvc, 32 x 44 inches



2019_08_25_01, 2019, latex on expanded pvc, 10 x 8 inches



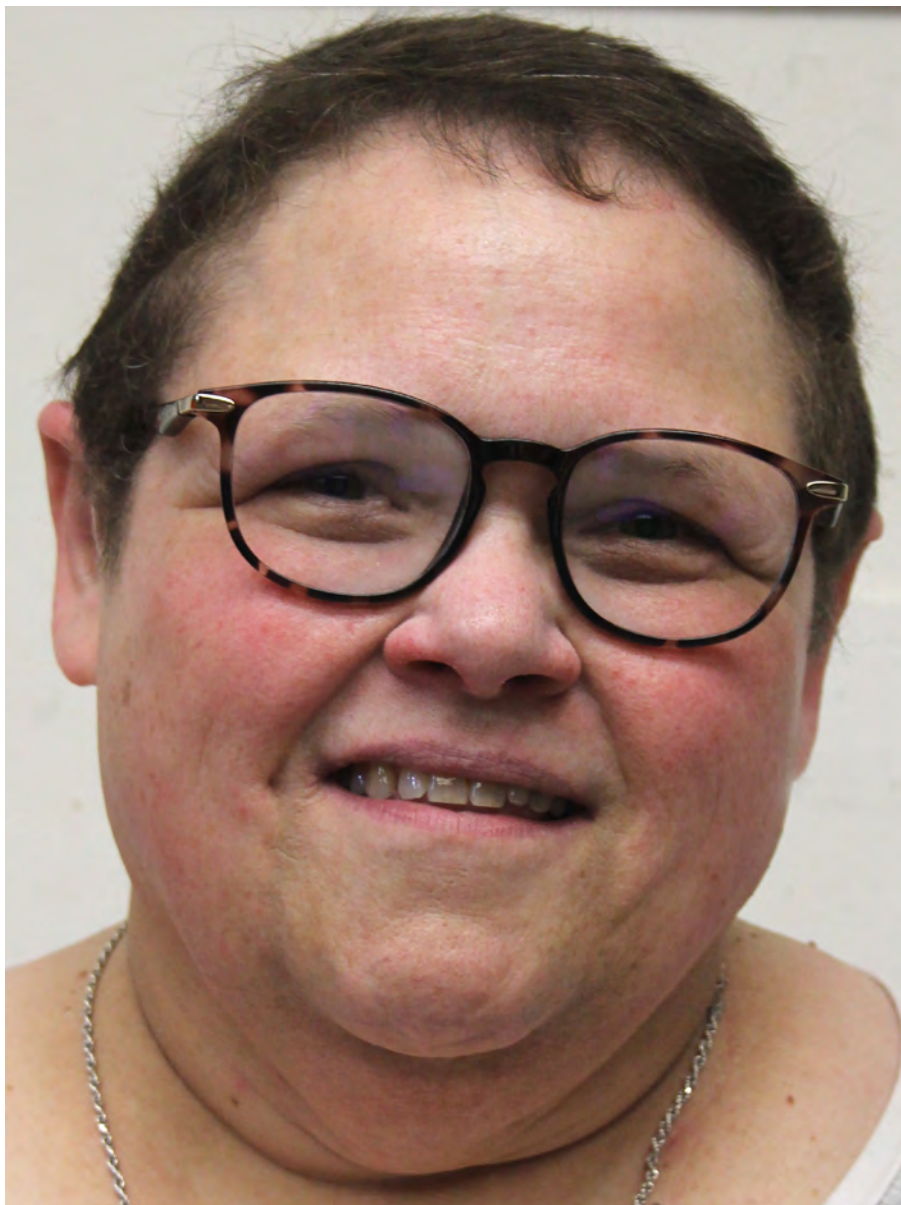
Joe Griffin



Marijo Griffin



Susan Stahl



Kathy Paduano



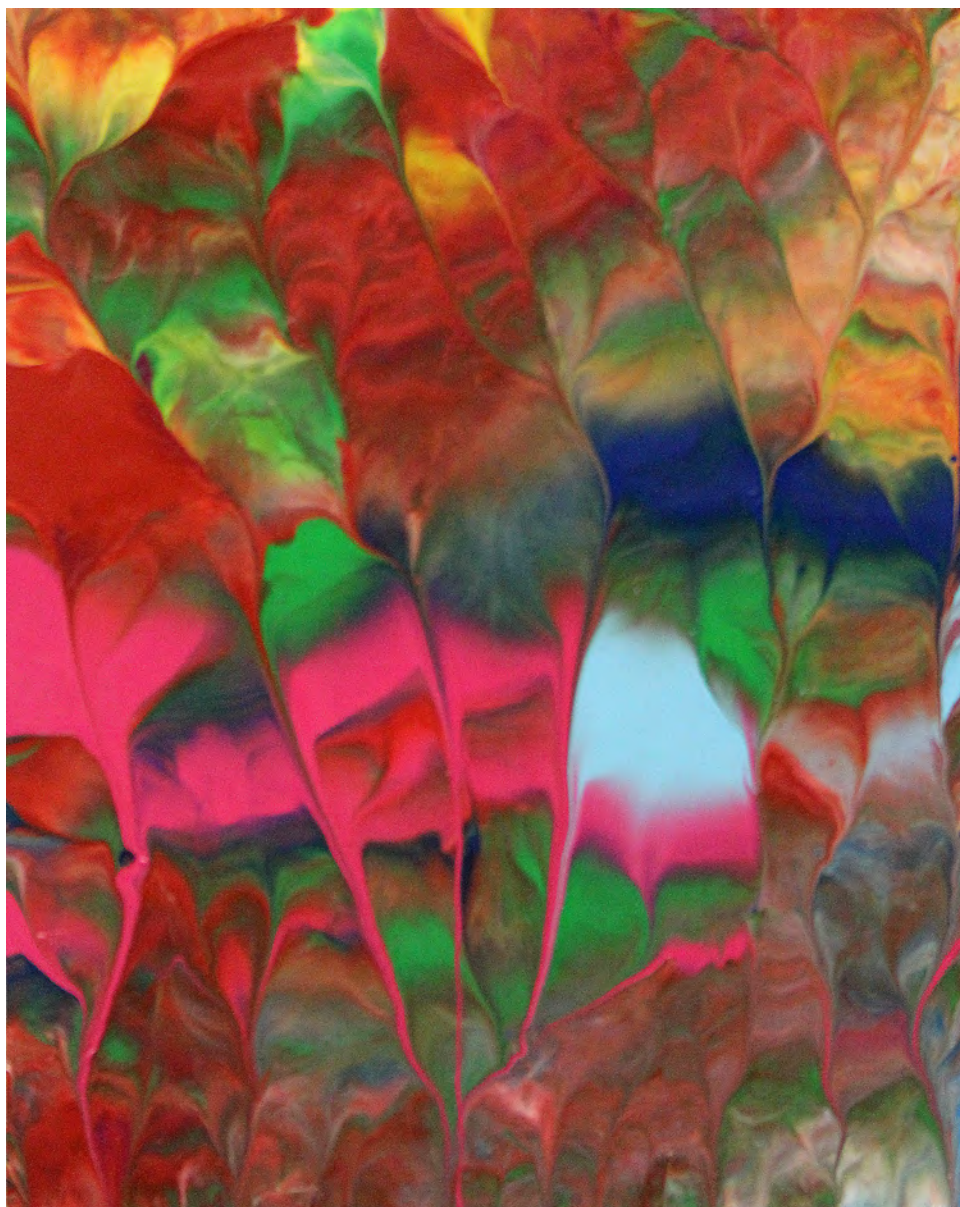
Cluffalo: Summer 2019 Fourteenth State, 2019, latex on expanded pvc, 32 x 44 inches



2019_09_03_01, 2019, latex on expanded pvc, 10 x 8 inches



2019_09_03_02, 2019, latex on expanded pvc, 10 x 8 inches



2019_09_03_03, 2019, latex on expanded pvc, 10 x 8 inches



2019_09_03_04, 2019, latex on expanded pvc, 10 x 8 inches



Viking Gustafson



Cluffalo: Summer 2019 Fifteenth State, 2019, latex on expanded pvc, 32 x 44 inches



2019_09_08_01, 2019, latex on expanded pvc, 10 x 8 inches

CLUFFFALO: WINTER 2019
FINISHED



Cluffalo: Spring 2019, 2019, latex on expanded pvc, 32 x 44 inches