



CHARLES CLOUGH
CLUFFFALO: WINTER 2017

I established the Cluffalo Institute in 2012 to manage my archive and collection and to promote and administer the Cluffalo Painting Workshop at the Roycroft in East Aurora, New York.

Cluffalo: Winter 2017 has been supported by the John Simon Guggenheim Memorial Foundation.

Here are the painters and the states of the painting made in my studio in The Print Shop at The Roycroft in the Winter 2017.

ISBN: 978-1-365-85825-3

© Charles Clough 2017

www.cluff.com

Cover: *Cluffalo: Winter 2017*, 2017, latex on expanded pvc, 32 x 44 inches

There are three kinds of *Clufffaloes: Seasons*, made by all who wish to participate, only at the Roycroft in East Aurora, New York; *Places*, such as *Clufffalo: Hamburg*, commissioned by the Albright-Knox Art Gallery and Erie County Public Art initiative, painted by 150 participants and hanging in the Hamburg, New York Public Library; and *Numbers*, painted by me alone.

The Clufffalo Painting Workshop at the Roycroft began on September 21st, 2015. Since then, and including the subject of this book, six *Seasons* paintings have been completed by 263 participants in 105 sessions.

I provide the space of the workshop, tools and materials, my time and encouragement and freedom, such as it is limited by gravity, viscosity and drying time, for the participants to engage the experience. Through the course of each season the layers of paint accrue and the participants paint their take-aways and “be” within a transformative creative moment. At the end of the season I grind and polish the painting, with grits from 40 to 12,000 to finish the painting in a manner that fulfills my aesthetic.

The Workshop is a ratcheting up of my “structure of intentionality” (the phrase occurred to me many years ago but only now, having just searched, I found a reference to John R. Searle, 1983, “Intentionality”), that I describe as “the photographic epic of a painter as a film or a ghost”. This is intuitively anchored in “the true, the good and the beautiful”.

Most of my aspirations have come true—in terms of being an artist and participating in extending the family. After more than forty-five years in the field I’ve seen increasing interest in contemporary art accompanied by a grandiosity that runs counter to my taste. Thus the scale and parameters of production of the Seasons are modest and set in the upstate New York town in which I came to understand myself as an artist.

Time is marked by the hands of the participants. The documentation of the Workshop process is made into books, like this one, as a contribution to art history.

The project includes whoever wants to participate, so please make an appointment to paint and share the news of this cultural experiment. Although only one session can happen per day, the project is always “on”.

This book follows a format of the participant(s), their state of *Clufffalo: Winter 2017* and then their take-away paintings. A separate publication presents stereo photos of details of the process and studio.

—Charles Clough, 3/28/2017



Tina Dillman



Cluffalo: Winter 2017 First State, 2017, latex on expanded pvc, 32 x 44 inches



Mono-print 2017_01_10_01, 2017, latex on expanded pvc, 10 x 8 inches



Mono-print 2017_01_10_02, 2017, latex on expanded pvc, 10 x 8 inches



Sean Favata



Jill Favata



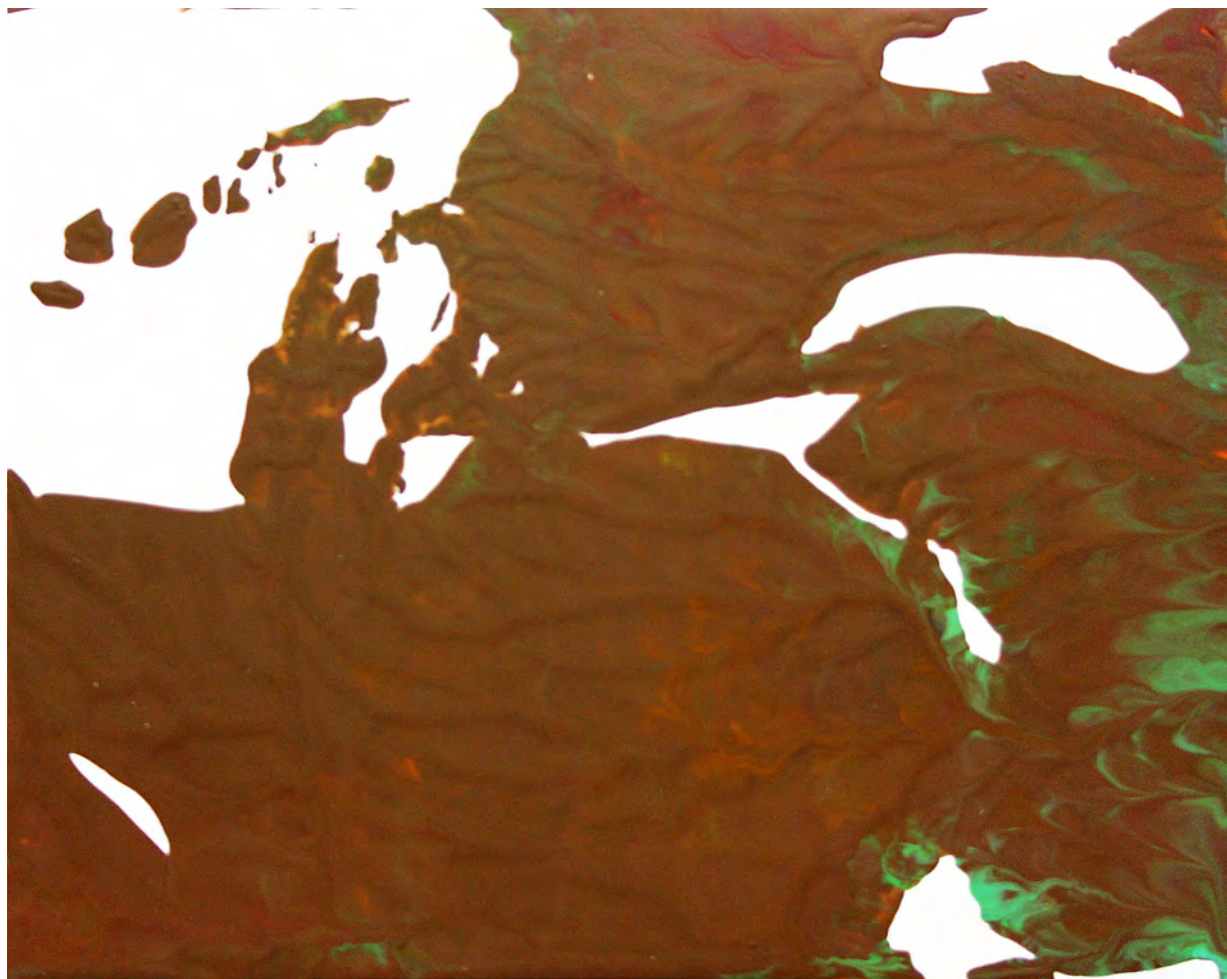
Corinne Favata



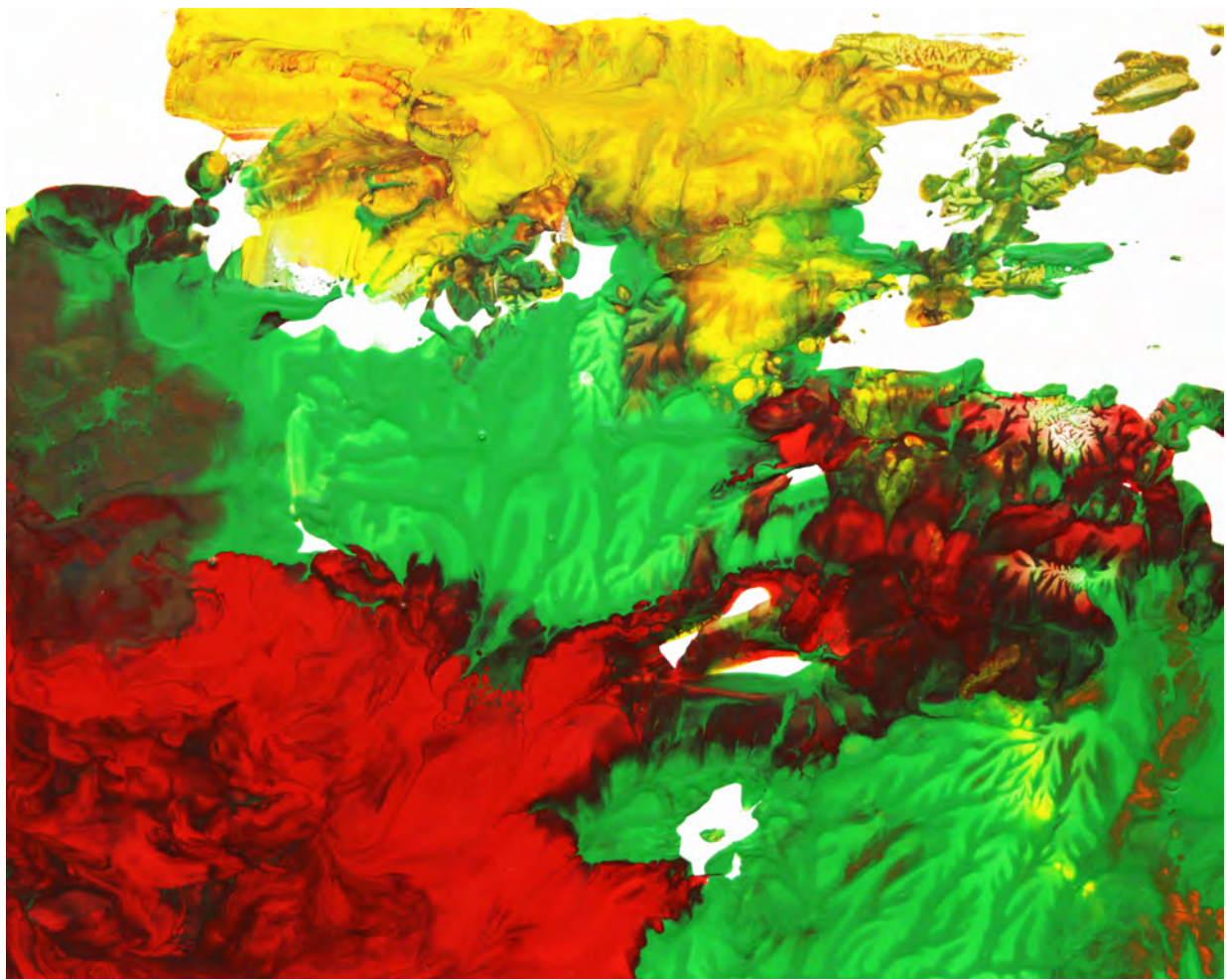
Cluffalo: Winter 2017 Second State, 2017, latex on expanded pvc, 32 x 44 inches



Mono-print 2017_01_17_01, 2017, latex on expanded pvc, 8 x 10 inches



Mono-print 2017_01_17_02, 2017, latex on expanded pvc, 8 x 10 inches



Mono-print 2017_01_17_03, 2017 latex on expanded pvc, 8 x 10 inches



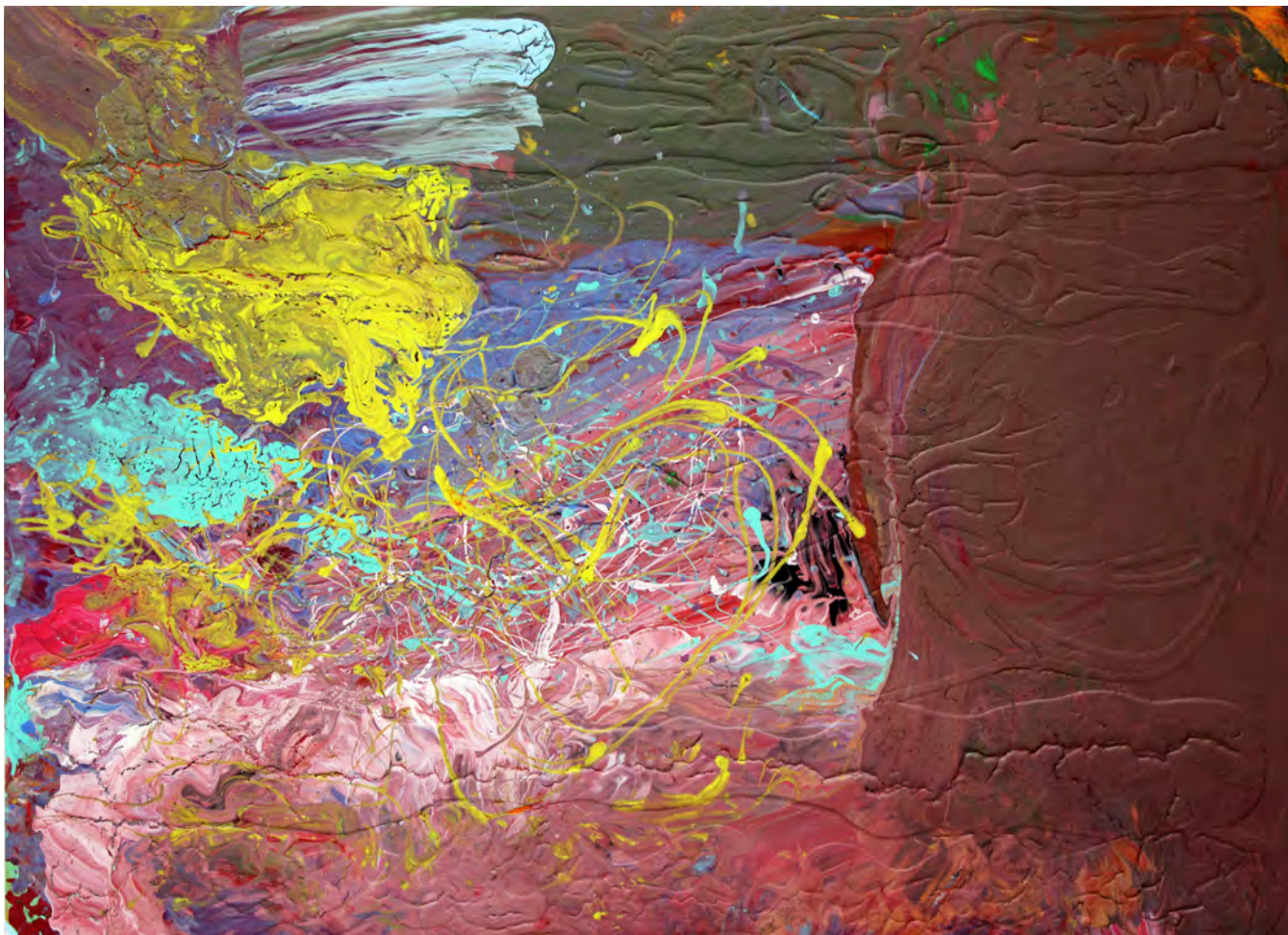
Charlie Hezel



Mavis Hezel



Ingrid Hezel



Cluffalo: Winter 2017, Third State, 2017, latex on expanded pvc, 32 x 44 inches



Mono-print 2017_01_25_01, 2017, latex on expanded pvc, 10 x 8 inches



Mono-print 2017_01_25_02, 2017, latex on expanded pvc, 10 x 8 inches



Mono-print 2017_01_25_03, 2017 latex on expanded pvc, 8 x 10 inches



Leita W. Reed



Jane Robbins



Cluffalo: Winter 2017 Fourth State, 2017, latex on expanded pvc, 32 x 44 inches



Mono-print 2017_01_26_01, 2017, latex on expanded pvc, 10 x 8 inches



Mono-print 2017_01_26_02, 2017, latex on expanded pvc, 10 x 8 inches



Jack Foran



Cluffalo: Winter 2017 Fifth State, 2017, latex on expanded pvc, 32 x 44 inches



Mono-print 2017_02_10_01, 2017, latex on expanded pvc, 10 x 8 inches



Valerie Masai Aspaas



Raisa Mehlretter



Kevin Mehlretter



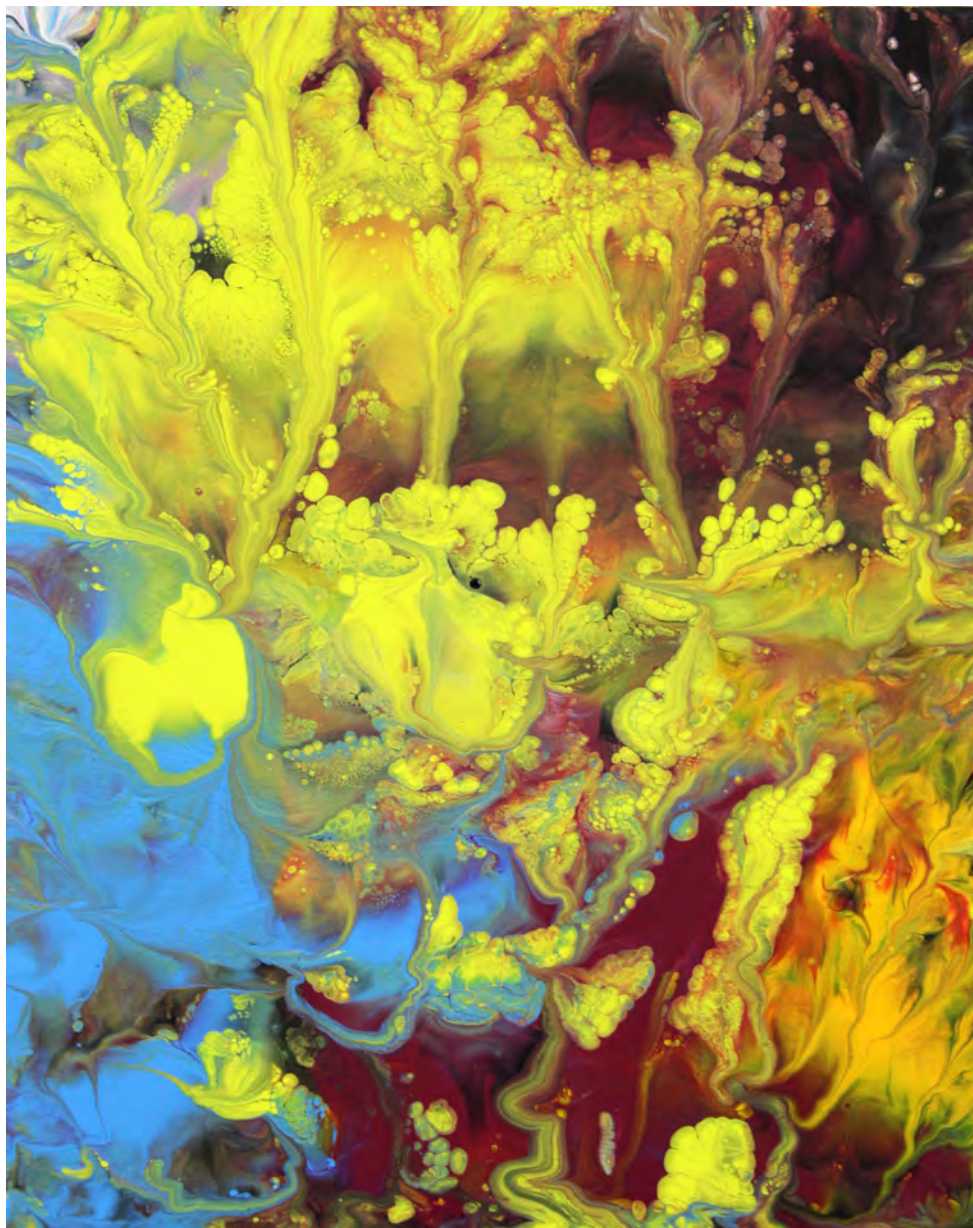
Kathie Aspaas



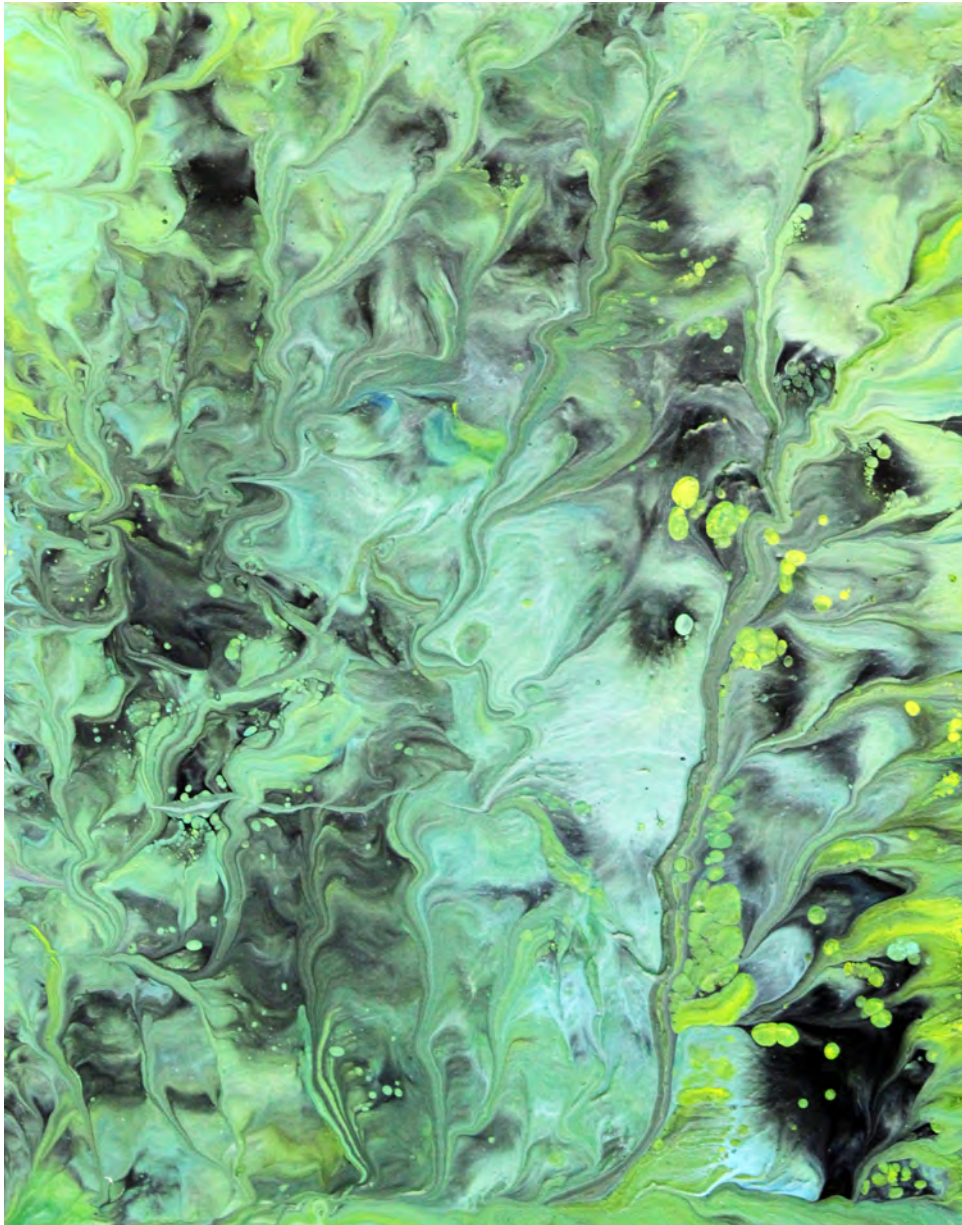
Clufffalo: Winter 2017, Sixth State, 2017, latex on expanded pvc, 32 x 44 inches



Mono-print 2017_02_11_01, 2017, latex on expanded pvc, 8 x 10 inches



Mono-print 2017_02_11_02, 2017, latex on expanded pvc, 10 x 8 inches



Mono-print 2017_02_11_03, 2017, latex on expanded pvc, 10 x 8 inches



Lauren Carli



Cluffalo: Winter 2017, Seventh State, 2017, latex on expanded pvc, 32 x 44 inches



Mono-print 2017_02_15_01, 2017, latex on expanded pvc, 8 x 10 inches



Tom Frank



Cluffalo: Winter 2017, Eighth State, 2017, latex on expanded pvc, 32 x 44 inches



Mono-print 2017_02_16_01, 2017, latex on expanded pvc, 16 x 20 inches



Rose Hanley



Cluffalo: Winter 2017, Ninth State, 2017, latex on expanded pvc, 32 x 44 inches



Mono-print 2017_02_18_01, 2017, latex on expanded pvc, 8 x 10 inches



Grace Meibohm



Dave Alessi



Nancy Miller



Cluffalo: Winter 2017 Tenth State, 2017, latex on expanded pvc, 32 x 44 inches



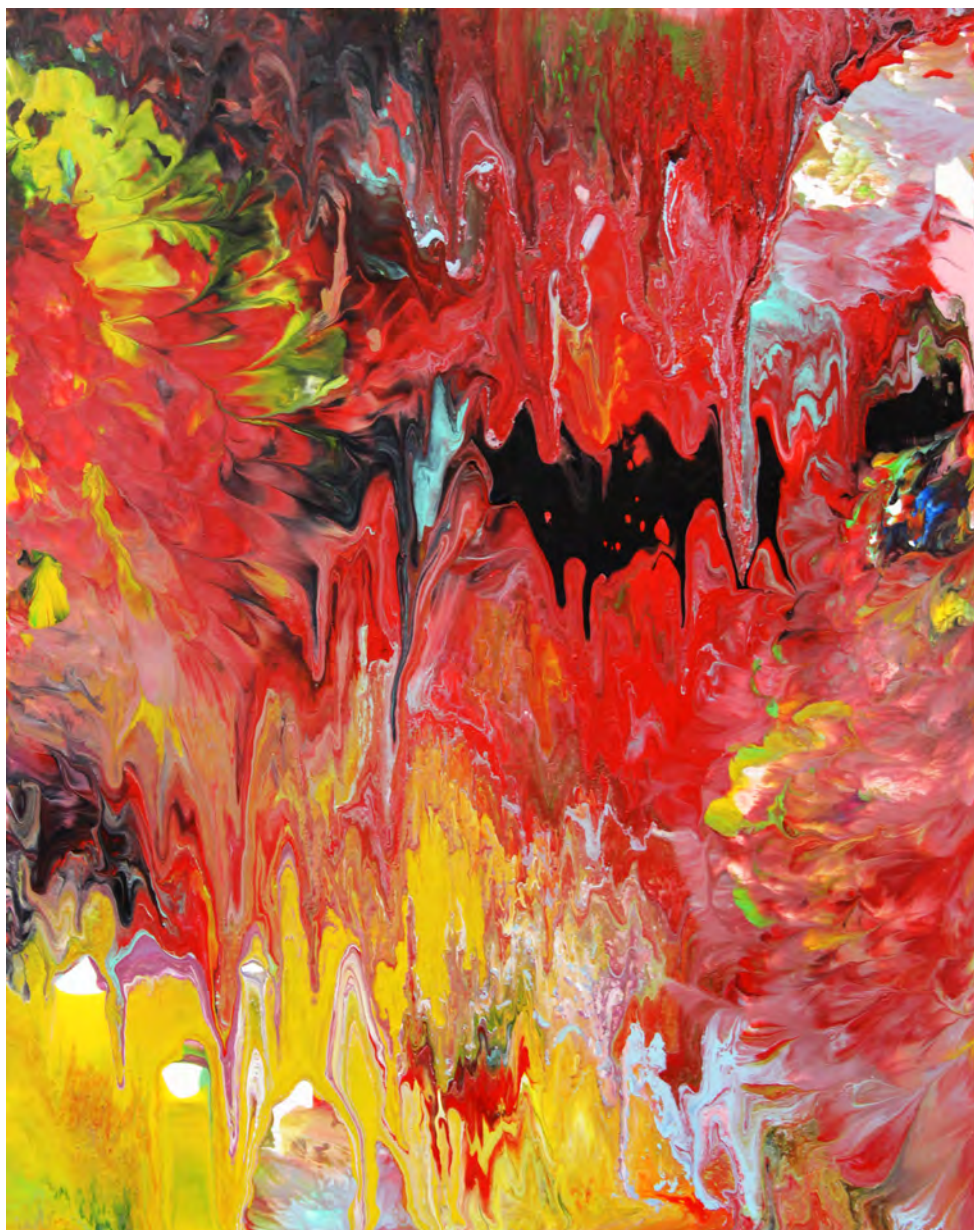
Mono-print 2017_03_07_01, 2017, latex on expanded pvc, 8 x 10 inches



Mono-print 2016_03_07_02, 2017, latex on expanded pvc, 8 x 10 inches



Mono-print 2017_03_07_03, 2017, latex on expanded pvc, 8 x 10 inches



Mono-print 2017_03_07_04, 2017, latex on expanded pvc, 10 x 8 inches



Ian McPhail



Cluffalo: Winter 2017 Eleventh State, 2017, latex on expanded pvc, 32 x 44 inches



Mono-print 2016_03_08_01, 2017, latex on expanded pvc, 10 x 8 inches



Suzanne Eberhardt



Cluffalo: Winter 2017 Twelfth State, 2017, latex on expanded pvc, 32 x 44 inches



Mono-print 2017_03_11_01, 2017, latex on expanded pvc, 8 x 10 inches



Deborah Misso



Olivia Maher



Deirdre Maher



Anna Sharpe



Ann Misso



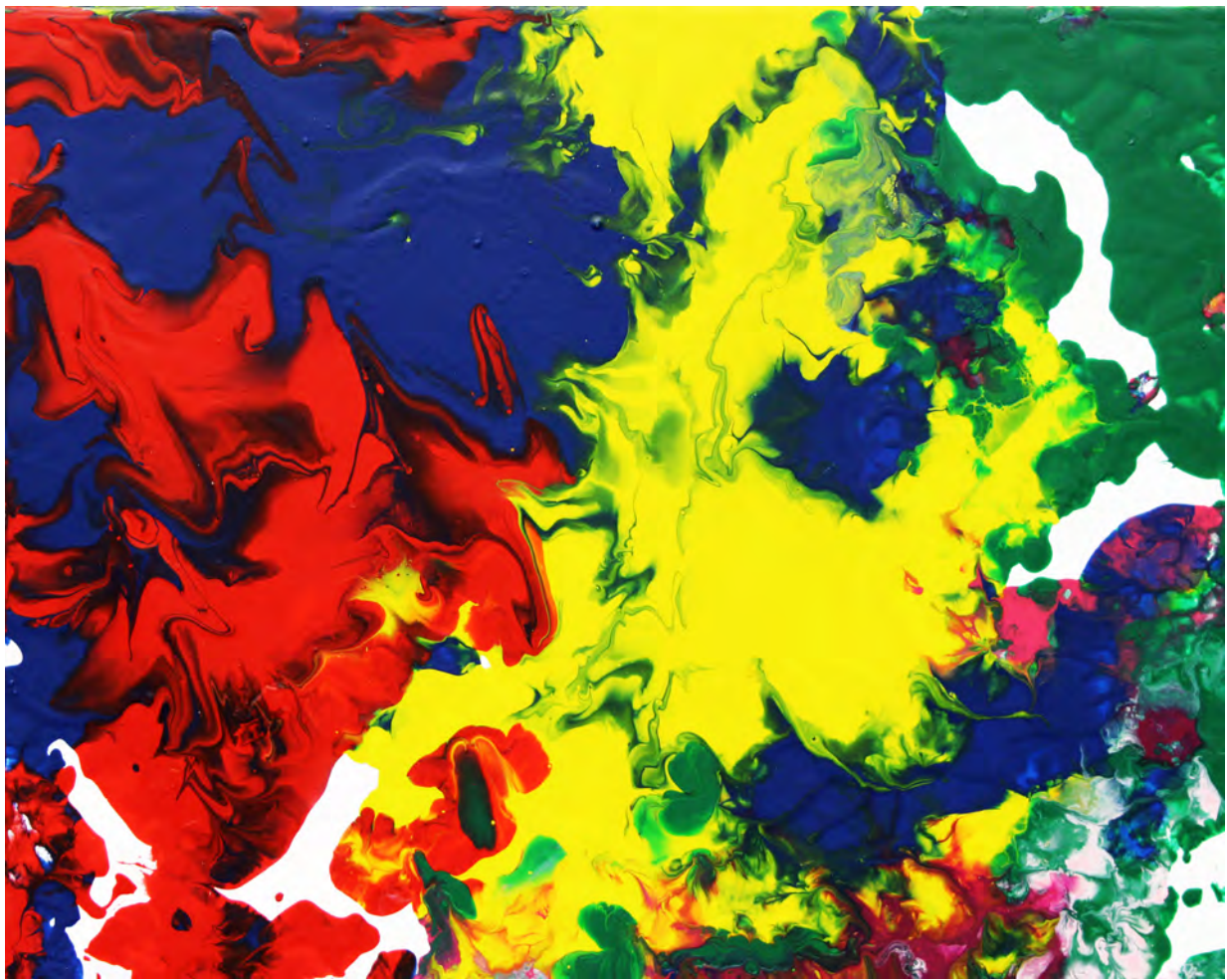
Gian Misso



Cluffalo: Winter 2017 Thirteenth State, 2017, latex on expanded pvc, 32 x 44 inches



Mono-print 2017_03_12_01, 2017, latex on expanded pvc, 8 x 10 inches



Mono-print 2017_03_12_02, 2017, latex on expanded pvc, 8 x 10 inches



Mono-print 2017_03_12_03, 2017, latex on expanded pvc, 8 x 10 inches



Mono-print 2017_03_12_04, 2017, latex on expanded pvc, 8 x 10 inches



Mono-print 2017_03_12_05, 2017, latex on expanded pvc, 8 x 10 inches



Mono-print 2017_03_12_06, 2017, latex on expanded pvc, 8 x 10 inches



Sue Palmo



Dom Palmo



Zach Palmo



Nate Palmo



Matt Palmo



Victor and Amy Palmo



Cluffalo: Winter 2017 Fourteenth State, 2017, latex on expanded pvc, 32 x 44 inches



Mono-print 2017_03_19_01_01, 2017, latex on expanded pvc, 8 x 10 inches



Mono-print 2017_03_19_02, 2017, latex on expanded pvc, 8 x 10 inches



Mono-print 2017_03_19_03, 2017, latex on expanded pvc, 8 x 10 inches



Cluffalo: Winter 2017 First Grind, 2017 latex on expanded pvc, 32 x 44 inches



Cluffalo: Winter 2017 Second Grind, 2017, latex on expanded pvc, 32 x 44 inches



Cluffalo: Winter 2017, 2017, latex on expanded pvc, 32 x 44 inches