



CHARLES CLOUGH
CLUFFFALO: WINTER 2018

I established the Clufffalo Institute in 2012 to manage my archive
and collection and to promote and administer the Clufffalo Painting
Workshop at the Roycroft in East Aurora, New York.

Clufffalo: Winter 2018

Here are the painters, states of the painting and mono-print take-aways made in
The Print Shop at The Roycroft in the Winter of 2018.

ISBN: 978-1-387-68581-3

© Charles Clough 2018

Cover: *Clufffalo: Winter 2018*, 2018, latex on expanded pvc, 32 x 44 inches

There are three kinds of *Clufffaloes: Seasons*, made by all who wish to participate, only at the Roycroft in East Aurora, New York; *Places*, such as *Clufffalo: Hamburg* commissioned by the Albright-Knox Art Gallery and Erie County PublicArt initiative, painted by 150 participants and hanging in the Hamburg, New York Public Library; and *Numbers*, painted by me alone.

The Clufffalo Painting Workshop at the Roycroft began on September 21st, 2015. Since then, and including the subject of this book, ten *Seasons* paintings have been completed by 407 participants in 166 sessions.

I provide the space of the workshop, tools and materials, my time and encouragement and freedom, such as it is limited by gravity, viscosity and drying time, for the participants to engage the experience. Through the course of each season the layers of paint accrue and the participants paint their take-aways and “be” within a transformative creative moment. At the end of the season I grind and polish the painting, with grits from 40 to 12,000 to finish the painting in a manner that fulfills my aesthetic.

The Workshop is a further development of my “structure of intentionality” (the phrase occurred to me many years ago but only recently, having searched, found a reference to John R. Searle, 1983, “Intentionality”), that I describe as “the photographic epic of a painter as a film or a ghost”. This is intuitively anchored in “the true, the good and the beautiful.”

Most of my aspirations have been realized—in terms of being an artist and participating in extending the family. After more than forty-five years in the field I’ve seen increasing interest in contemporary art accompanied by art that represents a grandiosity that runs counter to my taste. Thus the scale and parameters of production of the *Seasons* are modest and set in the upstate New York town in which I came to understand myself as an artist.

Time is marked by the hands of the participants. The documentation of the Workshop process is made into books, like this one, as a contribution to art history.

The project includes whoever wants to participate, so please make an appointment to paint and share the news of this cultural experiment. Although only one session can happen per day, the project is always “on”. This book follows a format of the participant(s), their state of *Clufffalo: Winter 2018* and then their take-away paintings. A separate publication presents stereo photos of details of the process and is available at www.clufff.com

—Charles Clough, 3/22/2018



Tina Dillman



Cluffalo: Winter 2018 First State, 2018, latex on expanded pvc, 32 x 44 inches



2018_01_14_01, 2018, latex on expanded pvc, 10 x 8 inches



Nina Woloszynska-Read



Justin Read



Cluffalo: Winter 2018 Second State, 2018, latex on expanded pvc, 32 x 44 inches



2018_01_15_01, 2018, latex on expanded pvc, 8 x 10 inches



2018_01_15_02, 2018, latex on expanded pvc, 8 x 10 inches



Delphine Walden



Liv Dailey



Avery Crouse



Dalton Gee



Anonymous



Huck Mabee



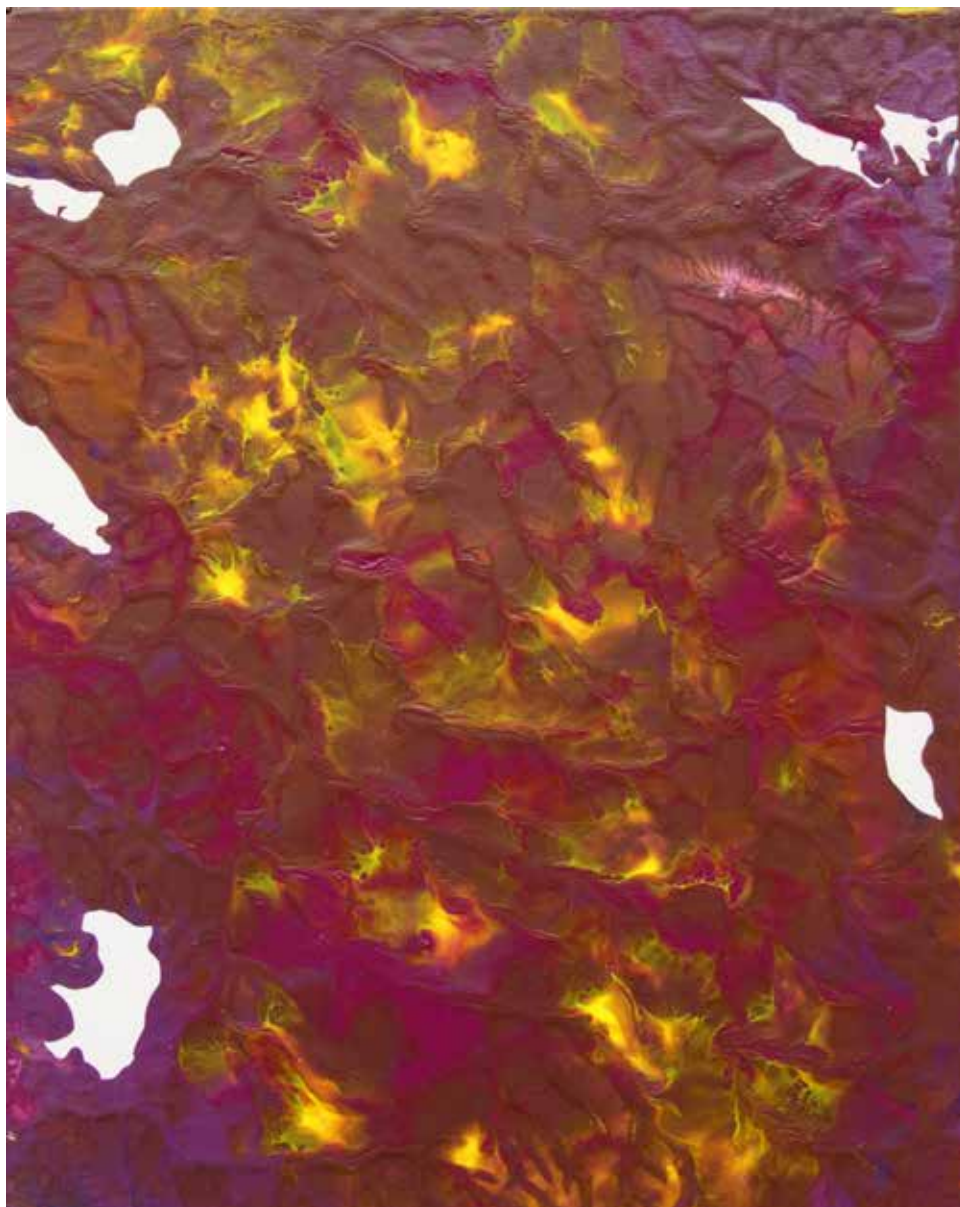
Cluffalo: Winter 2018 Third State, 2018, latex on expanded pvc, 32 x 44 inches



2018_02_04_01, 2018, latex on expanded pvc, 10 x 8 inches



2018_02_04_02, 2018, latex on expanded pvc, 10 x 8 inches



2018_02_04_03, 2018, latex on expanded pvc, 10 x 8 inches



2018_02_04_04, 2018, latex on expanded pvc, 10 x 8 inches



2018_02_04_05, 2018, latex on expanded pvc, 10 x 8 inches



2018_02_04_06, 2018, latex on expanded pvc, 10 x 8 inches



Barbara Van Every



Cluffalo: Winter 2018 Fourth State, 2018, latex on expanded pvc, 32 x 44 inches



2018_02_06_01, 2018, latex on expanded pvc, 8 x 10 inches



Necole Whitcher



Cluffalo: Winter 2018 Fifth State, 2018, latex on expanded pvc, 32 x 44 inches



2018_02_10_01, 2018, latex on expanded pvc, 8 x 10 inches



Jasmine Fiscus



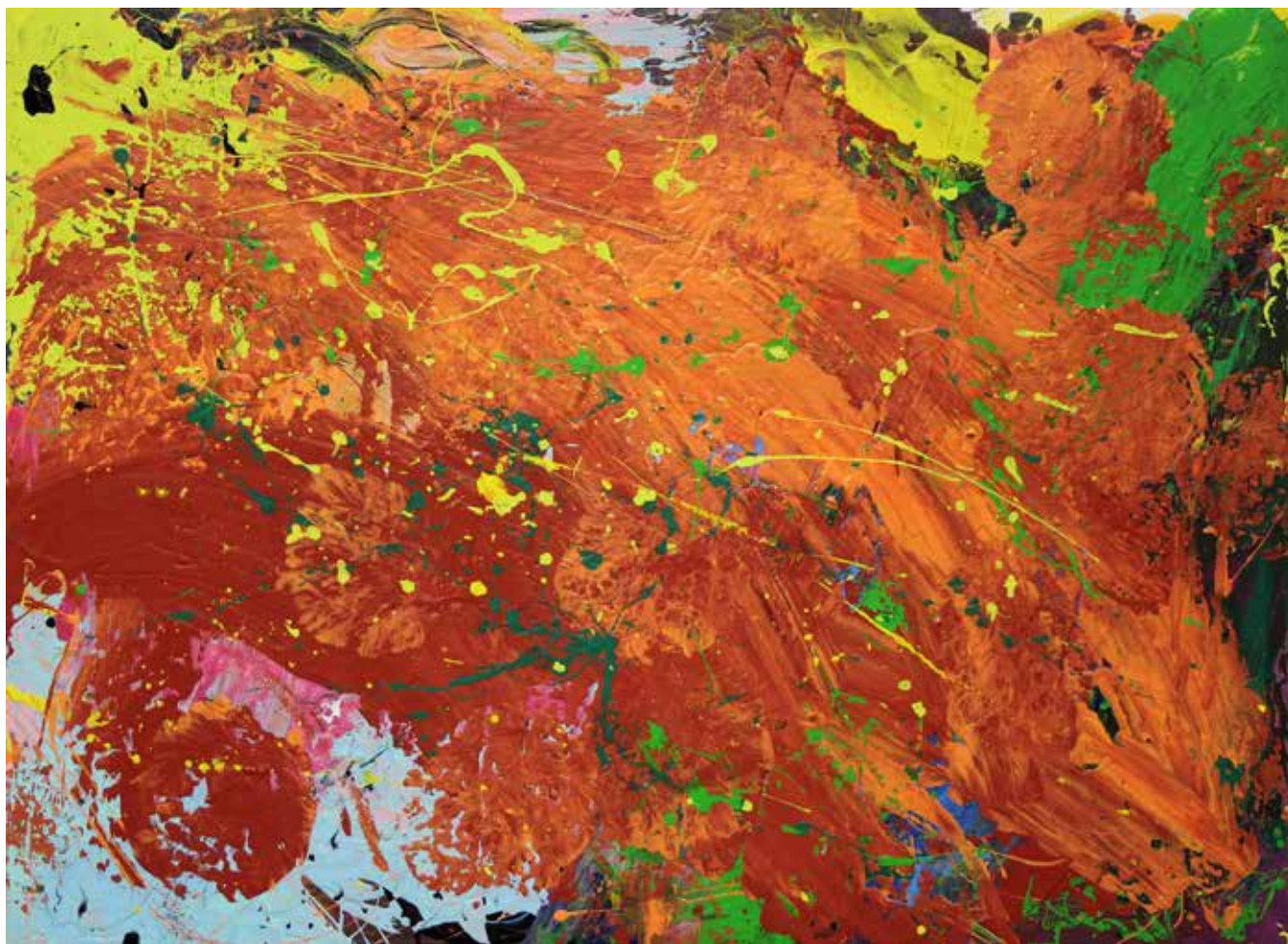
Cluffalo: Winter 2018 Sixth State, 2018, latex on expanded pvc, 32 x 44 inches



2018_02_15_01, 2018, latex on expanded pvc, 10 x 8 inches



Rachel Drenkhahn



Cluffalo: Winter 2018 Seventh State, 2018, latex on expanded pvc, 32 x 44 inches



2018_02_16_01, 2018, latex on expanded pvc, 8 x 10 inches



Amanda Falkowski



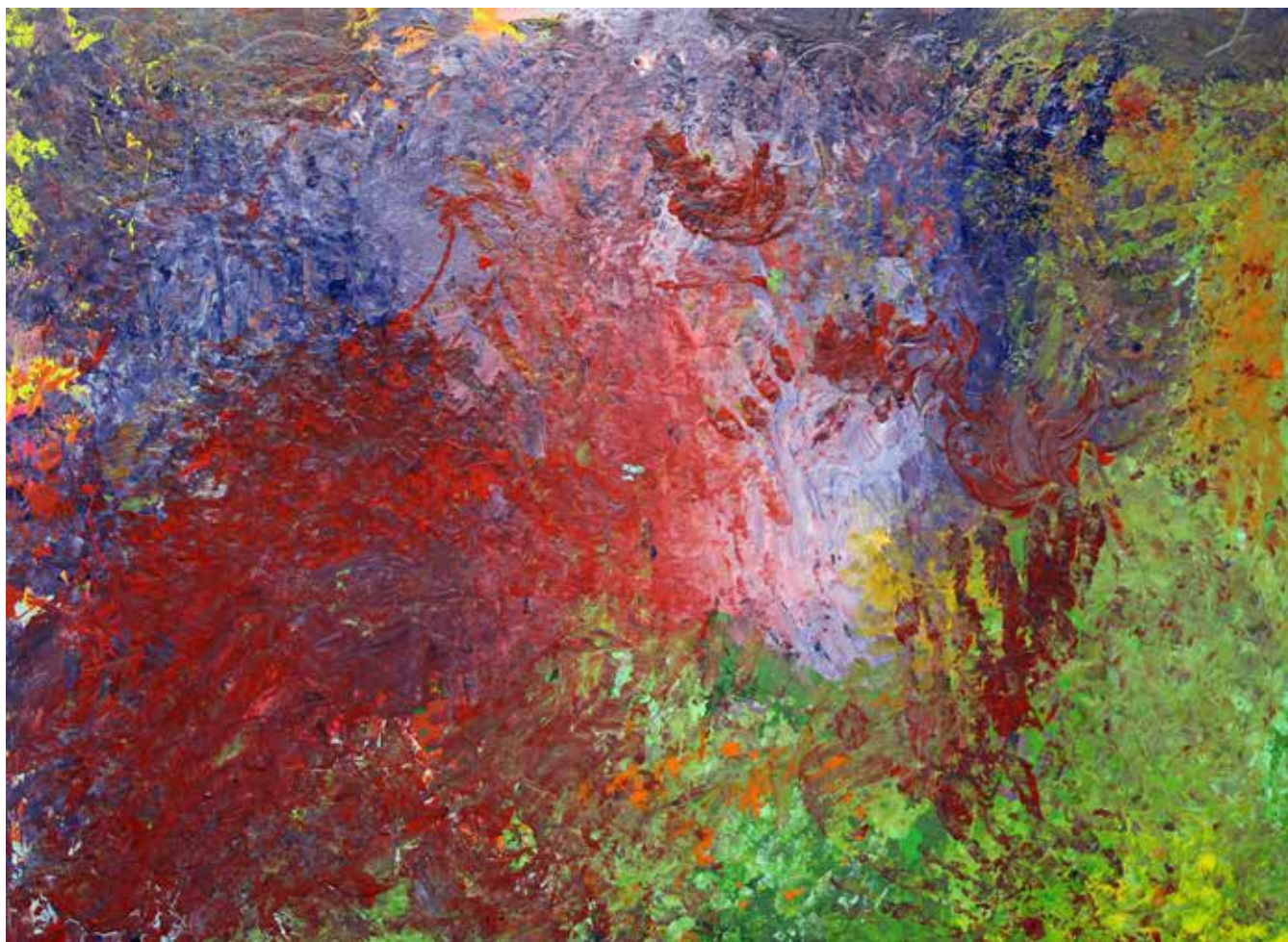
Cluffalo: Winter 2018 Eighth State, 2018, latex on expanded pvc, 32 x 44 inches



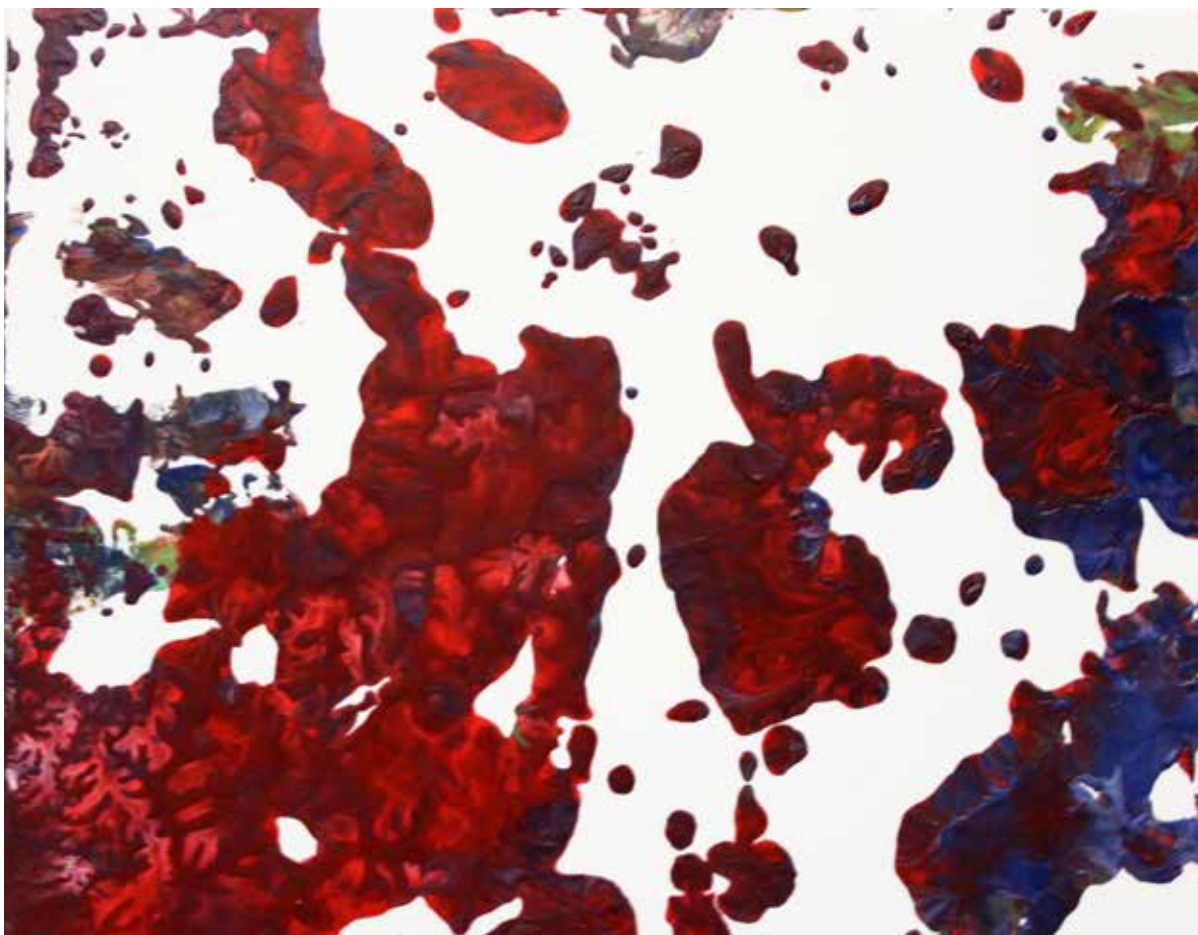
2018_02_17_01, 2018, latex on expanded pvc, 8 x 10 inches



Olga Loginova



Cluffalo: Winter 2018 Ninth State, 2018, latex on expanded pvc, 32 x 44 inches



2018_02_21_01, 2018, latex on expanded pvc, 8 x 10 inches



Gaige Reich



Maddi Reich



Samuel Skalska



Marley Skalska



Samantha Skalska



Alicia Wittman



Cluffalo: Winter 2018 Tenth State, 2018, latex on expanded pvc, 32 x 44 inches



2018_02_23_01, 2018, latex on expanded pvc, 8 x 10 inches



2018_02_23_02, 2018, latex on expanded pvc, 8 x 10 inches



2018_02_23_03, 2018, latex on expanded pvc, 8 x 10 inches



2018_02_23_04, 2018, latex on expanded pvc, 8 x 10 inches



2018_02_23_05, 2018, latex on expanded pvc, 8 x 10 inches



2018_02_23_06, 2018, latex on expanded pvc, 8 x 10 inches



Tala



Yvonne Stoklosa



Cluffalo: Winter 2018 Eleventh State, 2018, latex on expanded pvc, 32 x 44 inches



2018_02_25_01, 2018, latex on expanded pvc, 10 x 4 inches



2018_02_25_02, 2018, latex on expanded pvc, 10 x 8 inches



Matt Cehulic



Cluffalo: Winter 2018 Twelfth State, 2018, latex on expanded pvc, 32 x 44 inches



2018_03_14_01, 2018, latex on expanded pvc, 10 x 8 inches



Samuel Dechert



Wyatt Dechert



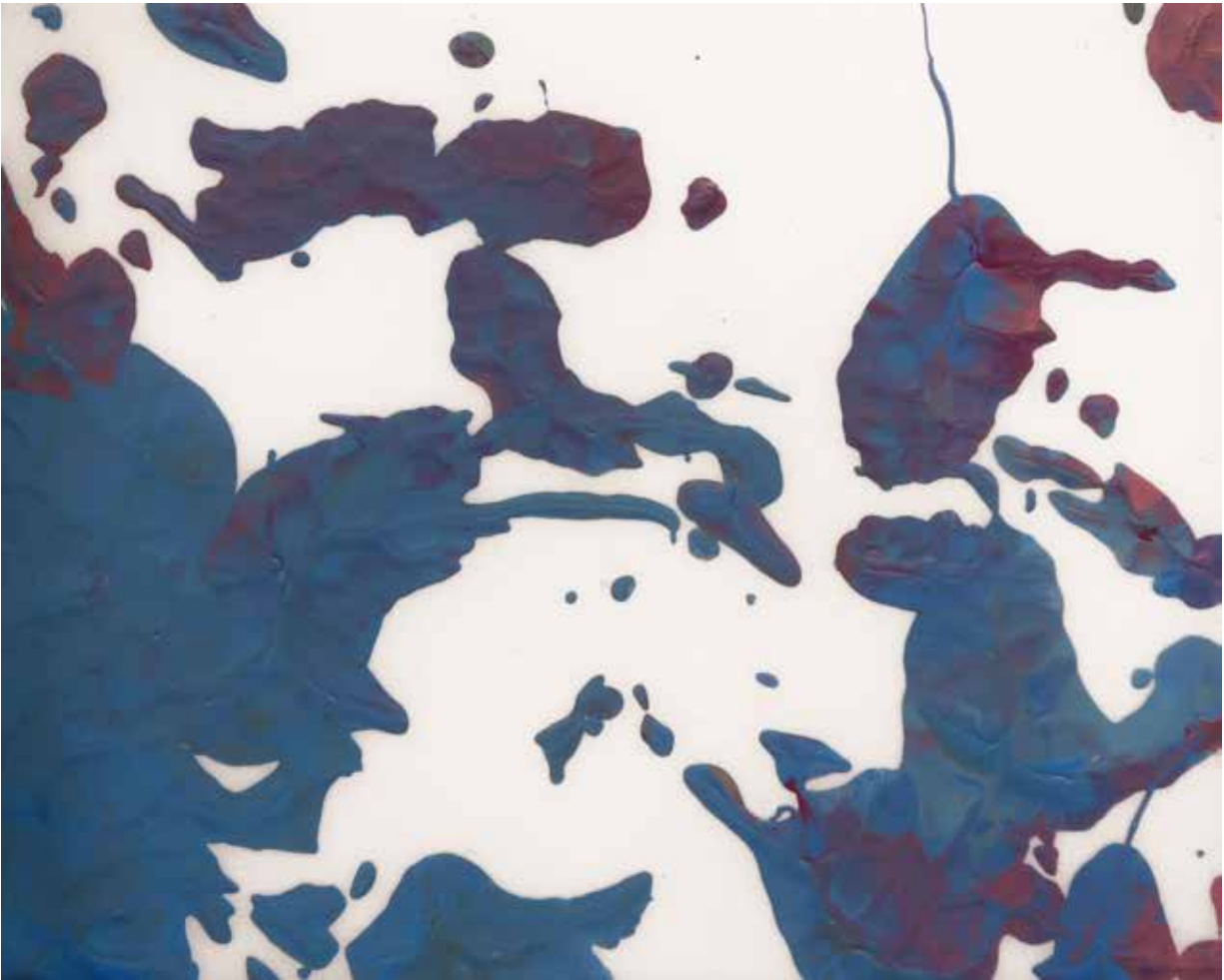
Heather Dechert



Peter Dechert



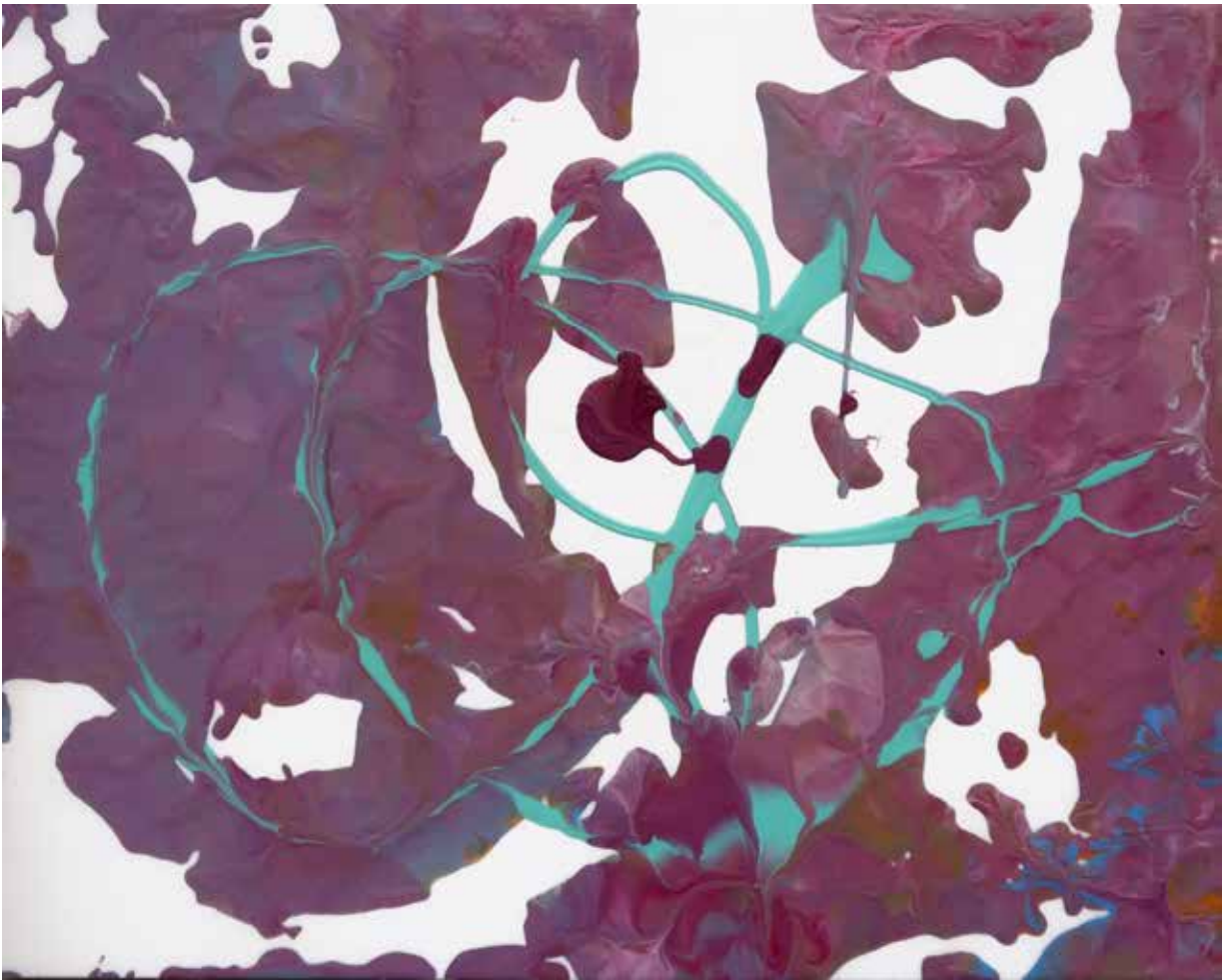
Cluffalo: Winter 2018 Thirteenth State, 2018, latex on expanded pvc, 32 x 44 inches



2018_03_16_01, 2018, latex on expanded pvc, 8 x 10 inches



2018_03_16_02, 2018, latex on expanded pvc, 8 x 10 inches



2018_03_16_03, 2018, latex on expanded pvc, 8 x 10 inches



2018_03_16_04, 2018, latex on expanded pvc, 8 x 10 inches



Sherry Prezioso



Cluffalo: Winter 2018 Fourteenth State, 2018, latex on expanded pvc, 32 x 44 inches



2018_03_19_01, 2018, latex on expanded pvc, 8 x 10 inches

THE THREE STAGES OF FINISHING CLUFFFALO: WINTER 2018











Cluffalo: Winter 2018, 2018, latex on expanded pvc, 32 x 44 inches